

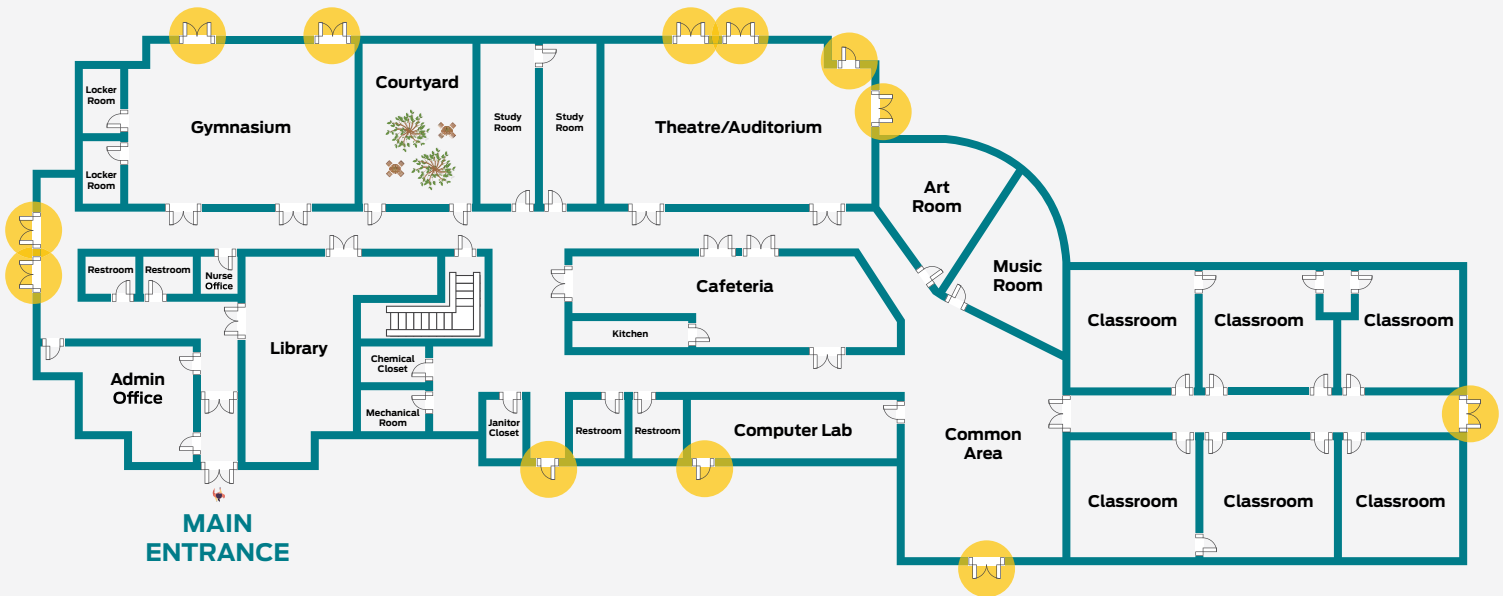
Perimeter Doors

These doors include secondary perimeter doors used for entrances to the school from bussed students, staff, athletics, playground, and receiving doors. They also include tertiary entrances/emergency exits.

 Learn best practices to secure this opening.



Locate these openings:



Operational requirements:



Door is **always** closed and locked



Access is gained by a **valid credential or key**



When needed, access can be granted by **dogging (latch retracted) from the inside**



Free egress is **always** available



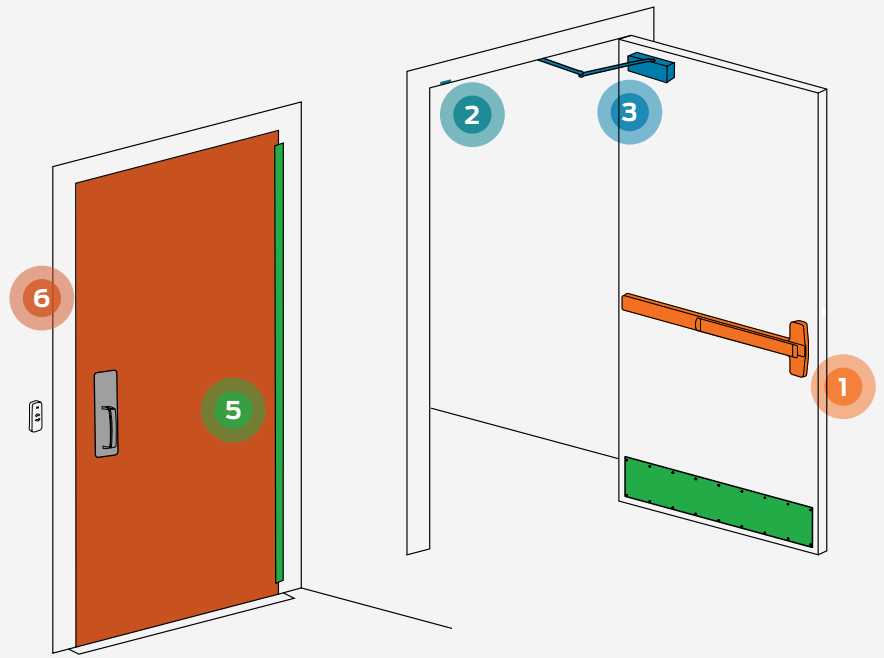
Door position and latch bolt **should be monitored**



Recommended products:

Here are some key components to securing a variety of types of perimeter doors.

For full solutions, specifications and recommendations, **contact us**.



Centralized electronic access control provides the highest level of security by providing instant emergency response to secure and lock down all perimeter entrances.

1



Panic hardware with electric latch retraction is recommended for perimeter doors that can be dogged (latch left retracted). For perimeter openings, these devices should not be able to be left unlocked from the outside and cylinder dogging (leaving the latch retracted for easy entrance into the building) should be limited to only those entrances that need it. **Visual indicators** are strongly recommended, so that staff knows the status of the door at a glance.

2



A **door position switch** and **latch bolt monitor** are recommended for doors that can be dogged (left unsecured) for access to the building. This allows administration to quickly know which doors are secure and which are not. (Sandy Hook page 53, MSD page 347, PASS page 60)

3



A **door closer** ensures that doors return to the closed, latched, and secure position. (Sandy Hook page 53, MSD page 346)

5



Consider **continuous hinges** and **kick plates** to provide protection and durability for high traffic doors that encounter abuse.

6



Consider **steel doors and frames** for higher levels of security, durability, and stronger lock reinforcements. Steel doors may have built-in conduit raceways to make wiring for access control easier.

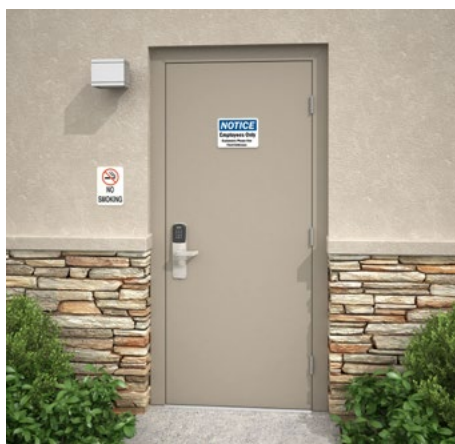
Securing perimeter doors

There are a variety of perimeter doors in a school. Depending on the use of these openings, they have different functional needs of the door hardware used to secure them.



Is the door used routinely for arrival and departure or for public entry to sporting or other events?

If yes, it is recommended that the doors have electronic access control. This provides the ability to have these doors automatically lock once school starts and automatically unlock for arrival, or for events. Additionally, the central office can see the locked status of these doors and invoke a lockdown in cases of emergency. (Note, these doors should not have mechanical dogging as that would override the access control.)



Is the door used for limited staff access?

If yes, it is recommended that these doors not have the ability to be left unlocked from the outside or dogged from the inside. Since staff use them on a limited basis, they can use their key or credential to enter the building and the hardware always provides free egress.



Is the door for exit only purposes?

If yes, it is recommended that these doors not have hardware on the outside or be able to be dogged from the inside. The hardware allows for free egress. Check with local law enforcement and emergency responders to check if they would ever need access to these doors.

Regardless of the use of the door, it should always be able to be locked from inside the school.

Recommendations from commission reports:

The following security recommendations are from past incident reports and the security industry.

Use of Perimeter Doors

- Access to school facilities should be kept to a limited number of controlled entrances. (Sandy Hook page 48, FED page 122, PASS page 57)
- Restrict visitor access during normal school hours. For entrances that must be utilized during the school day, use an electronic access control system to ensure access by only authorized personnel. (Sandy Hook page 52, FED page 122, PASS page 57)

Securing Perimeter Doors

- Exterior doors should always be closed, latched and locked when students are in classrooms. (Robb page 71, PASS page 57)
- All exterior doors should be equipped with hardware capable of implementing a full perimeter lockdown by manual or electronic means. (Sandy Hook page 53)
- All exterior doors must be easy to lock and allow for quick release in the event of an emergency. (Sandy Hook page 53)
- All exterior doors must meet fire, life safety and local building codes, as well as ADA requirements. (PASS page 60)
- Number all exterior doors that allow access to the interior of the school in sequential order in a clockwise manner starting with the main entrance. (Sandy Hook page 53)
- Use forced entry resistant, burglar resistant, and/or shatter resistant doors, windows, framing and anchoring systems. (Sandy Hook page 54, FED page 123, PASS page 58)

Sandy Hook Final Report of the Sandy Hook Advisory Commission, 03/2015 **MSD** Marjory Stoneman Douglass High School Public Safety Commission, 01/02/2019 **Robb** Investigative Committee on the Robb Elementary Shooting, Texas House of Representatives, Interim Report July 17, 2022 **FED** Final Report of the Federal Commission on School Safety, 12/18/2018 **PASS** PASS Guidelines, 6th Edition, 2023



To contact an Allegion security consultant, visit
us.allegion.com/schoolsecurity

About Allegion

Allegion (NYSE: ALLE) is a global pioneer in seamless access, with leading brands like CISA®, Interflex®, LCN®, Schlage®, SimonsVoss® and Von Duprin®. Focusing on security around the door and adjacent areas, Allegion secures people and assets with a range of solutions for homes, businesses, schools and institutions.

For more, visit www.allegion.com

KRYPTONITE ■ LCN ■  ■ STEELCRAFT ■ VON DUPRIN



ALLEGION

© 2023 Allegion
015666, Rev. 07/23
www.allegion.com/us