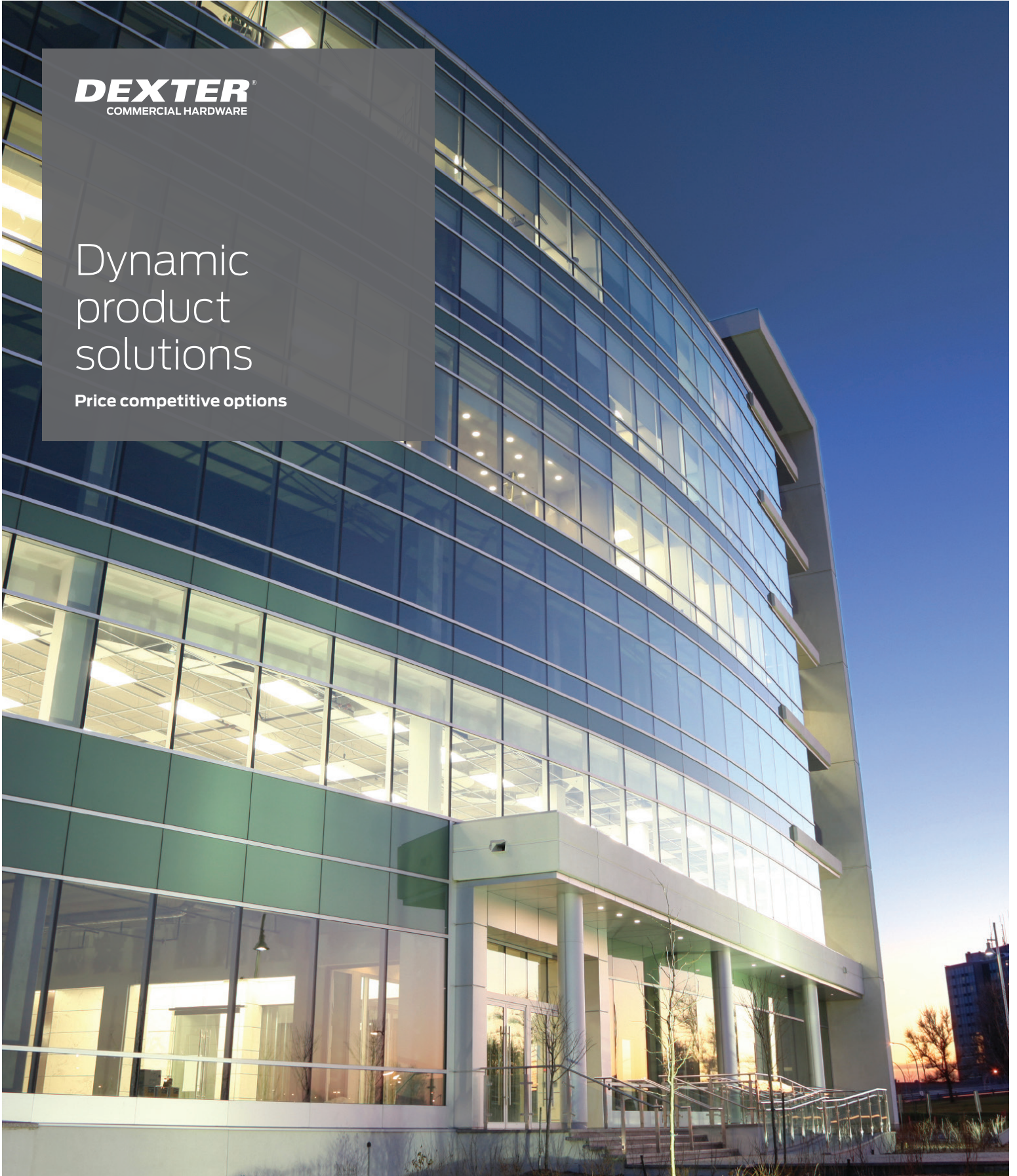


**DEXTER**<sup>®</sup>  
COMMERCIAL HARDWARE

Dynamic  
product  
solutions

Price competitive options



# Dexter Commercial Hardware

Allegion's Dexter Commercial Hardware provides you with over 300 SKUs of Grade 1 and Grade 2 product options for locks, exits and closers to fulfill most opening price point project needs.

- Grade 1 and 2 cylindrical locksets in multiple lever and knob styles, functions, finishes and cylinder types
- Grade 1 and 2 deadbolts in single and double cylinders, multiple finishes, and cylinder types
- Grade 1 compliant door closers in heavy, medium and light duty, common mounting hole patterns, multiple finishes and arm functions
- Grade 1 exit devices in multiple rim and fire rated functions, finishes, and outside trim options
- All Dexter Commercial Hardware products carry an Allegion 5-year Limited Mechanical Warranty

## Locks



### Designs



Regular lever

Curved lever

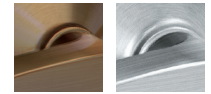
### C1000 Series

Grade 1 cylindrical lock

#### Specifications

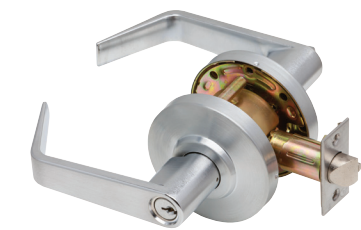
- Grade 1, UL listed 3-hour
- 1<sup>3</sup>/<sub>8</sub>" to 2" door range standard
- All functions include 1<sup>1</sup>/<sub>8</sub>" x 2<sup>1</sup>/<sub>4</sub>" square-corner beveled latch with 2<sup>3</sup>/<sub>4</sub>" backset and ANSI 1<sup>1</sup>/<sub>4</sub>" x 4<sup>7</sup>/<sub>8</sub>" curved lip strike
- Schlage conventional 6-pin (keyed 6) cylinders in Schlage C keyway, keyed different
- Less SFIC option accommodates 6-pin and 7-pin cores

### Finishes



613

626



### Designs



Regular lever

Curved lever

Ball knob

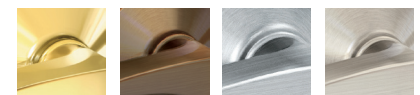
### C2000 Series

Grade 2 cylindrical lock

#### Specifications

- Grade 2, UL listed 3-hour
- 1<sup>1</sup>/<sub>8</sub>" x 1<sup>3</sup>/<sub>4</sub>" door range standard
- Brass (605) ball knobs come packaged with square-cornered beveled with 2<sup>3</sup>/<sub>8</sub>" backset and ANSI 1<sup>1</sup>/<sub>4</sub>" x 2<sup>1</sup>/<sub>4</sub>" T-Strike standard
- All other functions (except dummy) include 1<sup>1</sup>/<sub>8</sub>" x 2<sup>1</sup>/<sub>4</sub>" square-corner beveled latch with 2<sup>3</sup>/<sub>4</sub>" backset and ANSI 1<sup>1</sup>/<sub>4</sub>" x 4<sup>7</sup>/<sub>8</sub>" curved lip strike (30-148)
- Schlage conventional 6-pin (keyed 6) cylinders in Schlage C keyway, keyed different
- Less SFIC option accommodates 6-pin and 7-pin cores

### Finishes



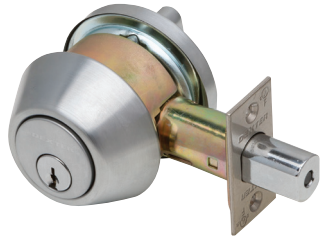
605

613

626

630

## Deadbolts



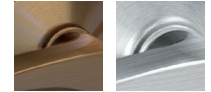
### DB1000 Series

Grade 1 deadbolt

#### Specifications

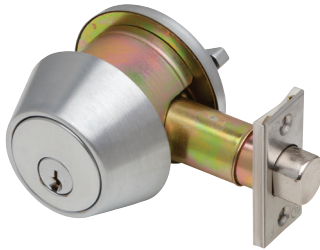
- Grade 1, UL listed 3-hour, 1<sup>3</sup>/<sub>8</sub>" - 1<sup>7</sup>/<sub>8</sub>" standard cylinder door range; 1<sup>5</sup>/<sub>8</sub>" - 2" SFIC door range
- All functions include 2<sup>3</sup>/<sub>8</sub>" - 2<sup>3</sup>/<sub>4</sub>" universal square corner latch (p/n 30-253), 1<sup>1</sup>/<sub>8</sub>" x 2<sup>3</sup>/<sub>4</sub>" square corner lipless strike
- Schlage conventional 6-pin (keyed 6) cylinders in Schlage C keyway, keyed different
- Less SFIC option accommodates 6-pin and 7-pin cores

#### Finishes



613

626



### DB2000 Series

Grade 2 deadbolt

#### Specifications

- Grade 2, UL listed 3 hour, 1<sup>3</sup>/<sub>8</sub>" - 1<sup>3</sup>/<sub>4</sub>" standard cylinder door range; 1<sup>5</sup>/<sub>8</sub>" - 2" SFIC door range
- All functions include 2<sup>3</sup>/<sub>8</sub>" - 2<sup>3</sup>/<sub>4</sub>" universal square corner latch (p/n 30-253), 1<sup>1</sup>/<sub>8</sub>" x 2<sup>3</sup>/<sub>4</sub>" square corner lipless strike
- Schlage conventional 6-pin (keyed 6) cylinders in Schlage C keyway, keyed different
- Less SFIC option accommodates 6-pin and 7-pin cores

#### Finishes



605

613

626

## Closers

### DCH4000 Series

Heavy duty surface door closer

#### Specifications

- Grade 1 compliant, UL 10C Listed (non-hold open arms), ADA compliant at size 1
- Adjustable spring size 1-6
- 5" x 2<sup>1</sup>/<sub>4</sub>" mounting hole pattern
- Staked, independent adjustment values: sweep speed, latch speed, and back-check
- Single piece, cast iron body
- Universal hardware pack



#### Finishes



ALUM/  
689

DKBRZ/  
695

### DCH1000 Series

Heavy duty surface door closer

#### Specifications

- Grade 1 compliant, UL 10C Listed (non-hold open arms), ADA compliant at size 1
- Adjustable spring size 1-6
- 6<sup>3</sup>/<sub>4</sub>" x 2<sup>3</sup>/<sub>8</sub>" mounting hole pattern
- Staked, independent adjustment values: sweep speed, latch speed, and back-check
- Single piece, cast aluminum body
- Universal hardware pack



#### Finishes



ALUM/  
689

DKBRZ/  
695

### DCM1000 Series

Medium duty surface door closer

#### Specifications

- Grade 1 compliant, UL 10C Listed (non-hold open arms), ADA compliant at size 1
- Adjustable spring size 1-6
- 12" x 3<sup>3</sup>/<sub>4</sub>" mounting hole pattern
- Staked, independent adjustment values: sweep speed, latch speed, and back-check
- Single piece, cast aluminum body
- Universal hardware pack



#### Finishes



ALUM/  
689

DKBRZ/  
695

### DCL2000 Series

Light duty surface door closer

#### Specifications

- Grade 1 compliant, UL 10C Listed (non-hold open arms), ADA compliant at size 1
- Adjustable spring size 1-6
- 9<sup>1</sup>/<sub>16</sub>" x 3<sup>3</sup>/<sub>4</sub>" mounting hole pattern
- Independent adjustment values: sweep speed, latch speed, and back-check
- Single piece, cast aluminum body
- Universal hardware pack



#### Finishes



ALUM/  
689

DKBRZ/  
695

## Exits



### ED1000 Series

Grade 1 exit device

#### Finishes



626

613

630

#### Specifications

- Grade 1, UL listed panic device, UL listed 3-hour fire device
- Durable, aluminum mechanism case construction
- Deadlatching standard
- Devices fit standard 1 3/4" thick door
- 4 1/4" minimum stile width
- Hex key dogging standard on all panic devices
- All devices and trim are non-handed
- Universal hardware pack for wood and hollow metal
- Door widths: 36" device fits 29" to 36" door size; 48" device fits 33" to 48" door size



### ED1500 Series

Grade 1 exit device

#### Finishes



SP28

SP313

#### Specifications

- Grade 1, UL listed panic device, UL listed 3-hour fire rim device
- Durable, steel mechanism case construction
- Deadlatching standard
- Devices fit standard 1 3/4" thick door
- 3 1/2" minimum stile width
- Hex key dogging standard on all panic devices
- Rim devices and trim are non-handed; Surface vertical devices easily field reversible
- Universal hardware pack for wood and hollow metal
- Door widths: 36" device fits 29" to 36" door size; 48" device fits 33" to 48" door size

## Dexter Commercial Hardware highly used product

### Locks and deadbolts

#### Grade 1

C1000 ENTR R 626 KDC

C1000 STRM R 626 KDC

C1000 PASS R 626

C1000 ENTR R 626 SFIC

C1000STRM R 626 SFIC

C1000 CLRM R 626 KDC

C1000 PRIV R 626

DB1000 SCT 626 KDC

DB1000 SCT 626 SFIC

#### Grade 2

C2000 ENTR R 626 KDC

C2000 STRM R 626 KDC

C2000 PASS R 626

C2000 ENTR B 630 KDC

C2000 CLRM R 626 KDC

C2000 ENTR R 626 SFIC

C2000 STRM R 626 SFIC

C2000 STRM B 630 KDC

C2000 ENTR C 626 KDC

DB2000 DCT 626 KDC

DB2000 DCT 626 SFIC

### Closers

DCL2000 STD LESS RW/PA ALUM

DCL2000 STD LESS RW/PA DKBRZ

DCM1000 STD SLIM RW/PA ALUM

DCH4000 STD FULL RW/PA ALUM

DCH1000 STD FULL RW/PA ALUM

### Exits

ED1500 R EO 3FT SP28

ED1000 R EO 3 FT US26D

ED1000 R F EO 3FT US26D

For full product listing, please reference the Dexter Commercial Hardware catalog and price book.

### About Allegion

Allegion (NYSE: ALLE) is a global pioneer in seamless access, with leading brands like CISA®, Interflex®, LCN®, Schlage®, SimonsVoss® and Von Duprin®. Focusing on security around the door and adjacent areas, Allegion secures people and assets with a range of solutions for homes, businesses, schools and institutions. Allegion had \$2.7 billion in revenue in 2018, and sells products in almost 130 countries. For more, visit [www.allegion.com](http://www.allegion.com).

KRYPTONITE ■ LCN ■  ■ STEELCRAFT ■ VON DUPRIN



© 2020 Allegion  
011708, Rev. 01/20  
[www.allegion.com/us](http://www.allegion.com/us)