

# READ THIS FIRST

## ELECTRIC LOCKING TRIM (FSA/FSE)

### DOOR PREPARATION AND WIRING

**FALCON®**

FSA/FSE

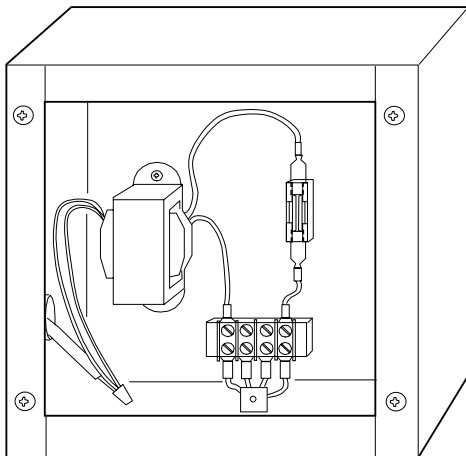
D-5131-b

Date: 05-29-15

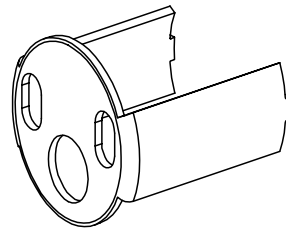
# INSTALLATION INSTRUCTIONS

## 1 PARTS CHECK

- 1) MAKE SURE THE CORRECT DEVICE AND TRIM ARE BEING USED AND ARE THE CORRECT HAND.  
**NOTE: MONARCH ELECTRIFIED LOCKING TRIMS AND DEVICES CANNOT BE RE-HANDED NOR CAN THE UNIT BE CHANGED FROM FSA TO FSE OR VICE VERSA.**
- 2) MAKE SURE THAT THE LUT-2 POWER SUPPLY IS USED WITH THE ELECTRIFIED TRIM AS REQUIRED.
- 3) MAKE SURE THAT THE 4873-089 CYLINDER MOUNTING BRACKET IS USED WITH 18 AND XX SERIES TRIMS.



**LUT-2 POWER SUPPLY**  
(SHOWN WITH COVER REMOVED)



**4873-089 CYLINDER**  
**MOUNTING BRACKET**

## 2 DOOR LAYOUT

1) VERIFY DOOR LAYOUT PER ATTACHED TEMPLATES ON PAGES 11-40.

DEVICE & TRIM TYPE	DEVICE TEMPLATE METAL / WOOD (PAGES)	TRIM TEMPLATE METAL / WOOD (PAGES)
(F)-18-R-LE/SE/KE	T-5208 / W-5208 (26/27)	T-5365 / W-5365 (36/37)
(F)-18-R-T APOLLO	T-5208 / W-5208 (26/27)	T-5351 / W-5351 (34/35)
(F)-18-R-T VANGUARD	T-5208 / W-5208 (26/27)	T-5321 / W-5321 (32/33)
(F)-18-V-LE/SE/KE	T-5216 / W-5216 (30/31)	T-5365 / W-5365 (36/37)
(F)-18-V-T APOLLO	T-5216 / W-5216 (30/31)	T-5351 / W-5351 (34/35)
(F)-18-V-T VANGUARD	T-5216 / W-5216 (30/31)	T-5321 / W-5321 (32/33)
(F)-18-M-LE/SE/KE	T-5210 / W-5210 (28/29)	T-5365 / W-5365 (36/37)
(F)-18-M-T APOLLO	T-5210 / W-5210 (28/29)	T-5351 / W-5351 (34/35)
(F)-18-M-T VANGUARD	T-5210 / W-5210 (28/29)	T-5321 / W-5321 (32/33)
(F)-XX-R-LE/SE/KE	T-5001 / W-5001 (12/13)	T-5365 / W-5365 (36/37)
(F)-XX-R-T APOLLO	T-5001 / W-5001 (12/13)	T-5351 / W-5351 (34/35)
(F)-XX-R-T VANGUARD	T-5001 / W-5001 (12/13)	T-5321 / W-5321 (32/33)
(F)-XX-V-LE/SE/KE	T-5016 / W-5016 (16/17)	T-5365 / W-5365 (36/37)
(F)-XX-V-T APOLLO	T-5016 / W-5016 (16/17)	T-5351 / W-5351 (33/34)
(F)-XX-V-T VANGUARD	T-5016 / W-5016 (16/17)	T-5321 / W-5321 (32/33)
(F)-XX-M-LE/SE/KE	T-5010 / W-5010 (14/15)	T-5365 / W-5365 (36/37)
(F)-XX-M-T APOLLO	T-5010 / W-5010 (14/15)	T-5351 / W-5351 (34/35)
(F)-XX-M-T VANGUARD	T-5010 / W-5010 (14/15)	T-5321 / W-5321 (32/33)
(F)-17-R ALL TRIMS	T-5120 / W-5120 (22/23)	T-5467 / W-5467 (40/41)
(F)-17-V ALL TRIMS	T-5128 / W-5128 (24/25)	T-5467 / W-5467 (40/41)
(F)-19-R ALL TRIMS	T-5100 / W-5100 (18/19)	T-5427 / W-5427 (38/39)
(F)-19-R ALL TRIMS	T-5105 / W-5105 (20/21)	T-5427 / W-5427 (38/39)

**NOTE: THE TEMPLATE FOR HINGE PREP ON 17, 18, AND 19 SERIES DEVICES ARE:**

T-5020 FOR METAL DOORS (ON PAGE 42) & W-5020 FOR WOOD DOORS (ON PAGE 43)

2) FOR XX DEVICES, VERIFY THAT THERE IS A WIRE RUN (OR A ROUTING FOR A WIRE RUN) FROM THE HINGE SIDE OF THE DOOR TO THE ACTIVE HEAD PREP.

# 3

## BASIC SYSTEM WIRING SCHEMATIC

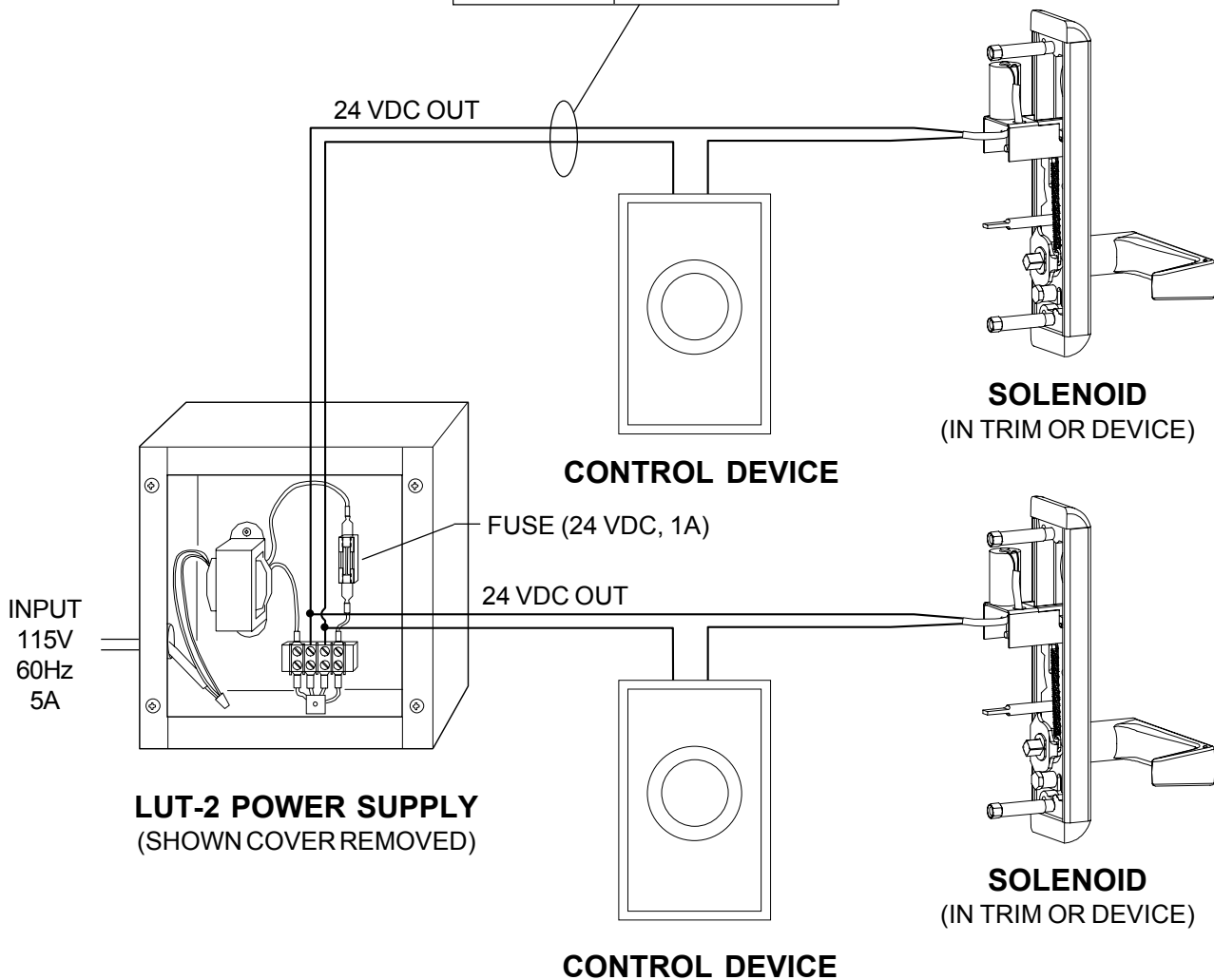
ONE LEG OF THE POWER FROM THE LUT-2 POWER SUPPLY CONNECTS TO ONE LEG OF THE SOLENOID.

THE OTHER LEG OF POWER FROM THE LUT-2 POWER SUPPLY CONNECTS TO A CONTROL DEVICE (CARD READER, KEY PAD, PUSH BUTTON, DRY CONTACT, ETC.) AND THEN TO SOLENOID. SEE DIAGRAM BELOW.

**NOTE: THE CONTROL DEVICE MUST BE ABLE TO WITHSTAND 24VDC @ 0.5 A, OTHERWISE USE A SWITCHING RELAY TO CONTROL THE UNIT.**

### TWO INDEPENDENT TRIM SET-UP

WIRE RUN	AWG REQUIRED
0-100 FT.	18
101-200 FT.	16
201-300 FT.	14



---

# 4 SYSTEM INSTALLATION

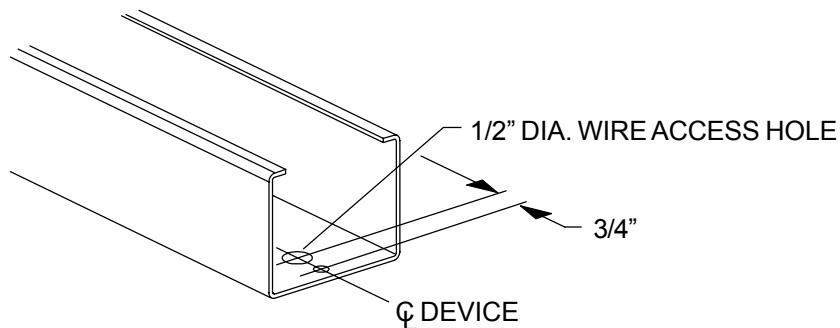
---

FOR 17 SERIES, SEE BELOW.  
FOR 18 SERIES, SEE PAGE 6.  
FOR 19 SERIES, SEE PAGE 8.  
FOR XX SERIES, SEE PAGE 10.

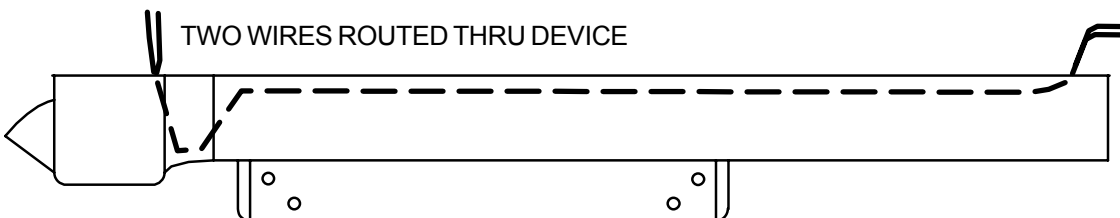
## 4A. 17 SERIES DEVICE SYSTEM INSTALLATION

- 1) DRILL 1/2" DIA. WIRE ACCESS HOLE IN HINGE END OF 17 SERIES EXIT DEVICE AND DEBURR.

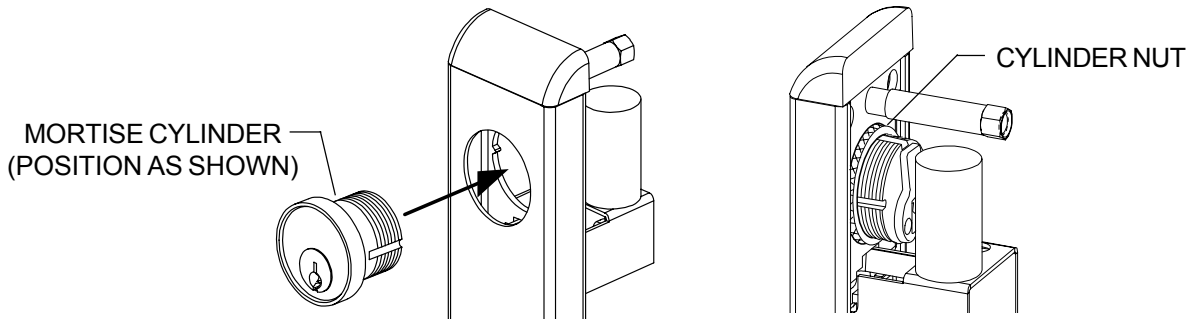
**NOTE: DO NOT DRILL THIS WIRE ACCESS HOLE UNTIL AFTER DEVICE HAS BEEN SIZED TO FIT DOOR (DEVICE SOMETIMES MUST BE CUT TO LENGTH). SEE DEVICE INSTRUCTIONS.**



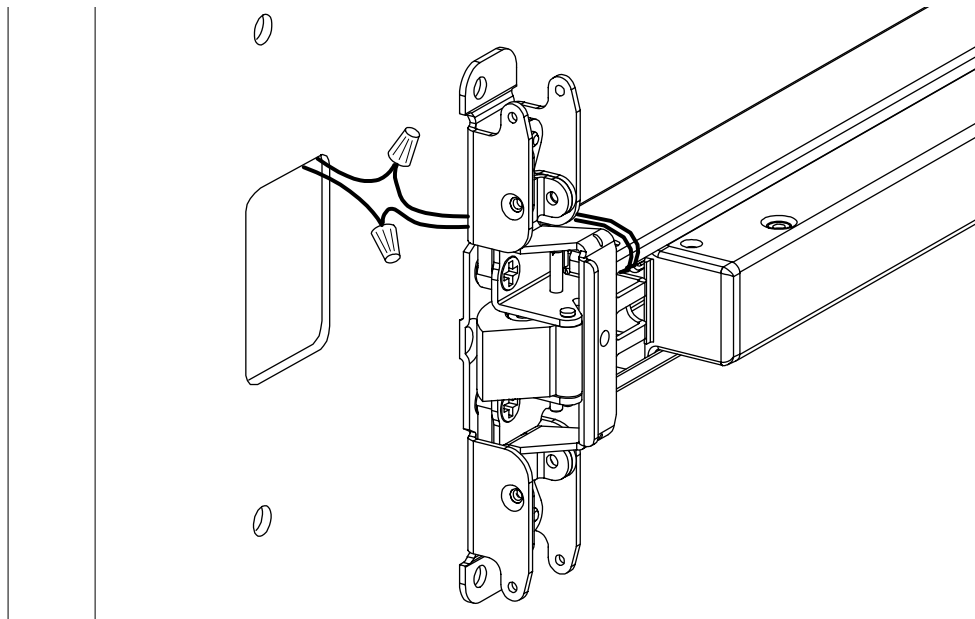
- 2) VERIFY THAT THERE IS WIRE RUN FROM THE HEAD AREA OF THE DEVICE THROUGH THE PUSHBAR AND COMING OUT THE HINGE END OF THE DEVICE. THIS WILL BE USED FOR CONDUIT FOR THE ELECTRIFIED FEATURE.



- 3) MOUNT THE MORTISE CYLINDER FOR THE KEY OVERRIDE FEATURE (IF DESIRED) TO THE TRIM USING THE CYLINDER NUT PROVIDED WITH THE TRIM.



- 4) CONNECT THE WIRES FROM THE SOLENOID IN THE CONTROL TRIM TO THE WIRES RUNNING THROUGH THE 17 SERIES DEVICE.

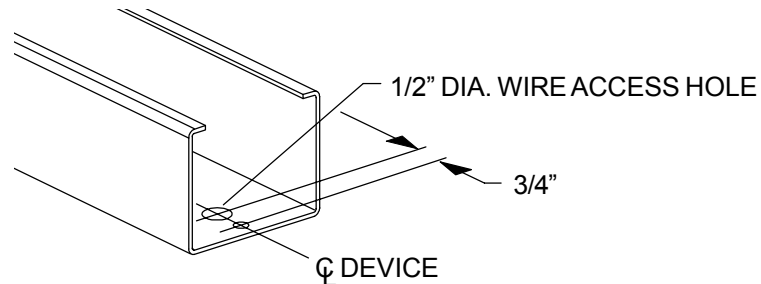


- 5) THROUGH BOLT THE DEVICE AND TRIM AND PROCEED WITH DEVICE INSTALLATION.
- 6) AFTER DEVICE INSTALLATION, CONNECT DEVICE TO LUT-2 POWER SUPPLY AND PROCEED TO OPERATIONAL TEST ON PAGE 11.

# 4B. 18 SERIES DEVICE SYSTEM INSTALLATION

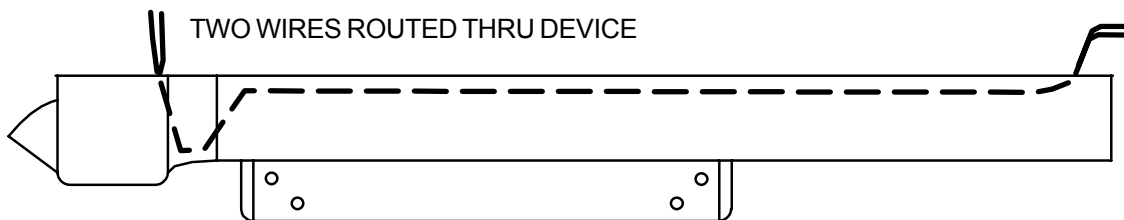
- 1) DRILL 1/2" DIA. WIRE ACCESS HOLE IN HINGE END OF 18 SERIES EXIT DEVICE AND DEBURR.

**NOTE: DO NOT DRILL THIS WIRE ACCESS HOLE UNTIL AFTER DEVICE HAS BEEN SIZED TO FIT DOOR (DEVICE SOMETIMES MUST BE CUT TO LENGTH). SEE DEVICE INSTRUCTIONS.**

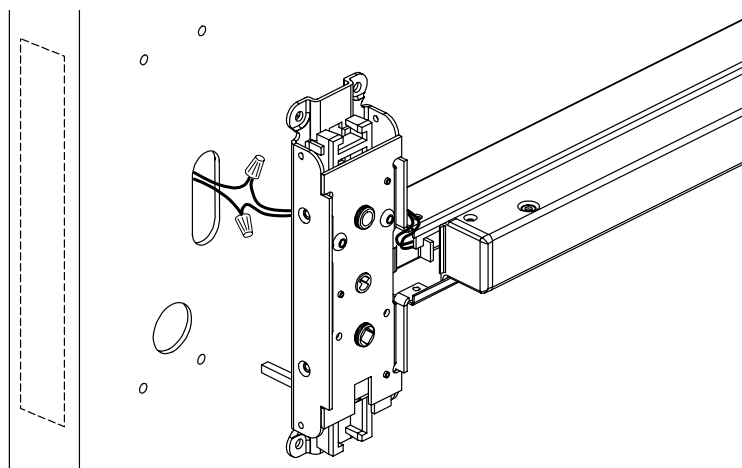


- 2) MORTISE DEVICE INSTALLATION (FOR RIM OR VERTICAL DEVICE, GO TO STEP 3):

- 2A) ON MORTISE DEVICES, VERIFY THAT THERE IS WIRE RUN FROM THE HEAD AREA OF THE DEVICE THROUGH THE PUSHBAR AND COMING OUT THE HINGE END OF THE DEVICE. THIS WILL BE USED FOR CONDUIT FOR THE ELECTRIFIED FEATURE.



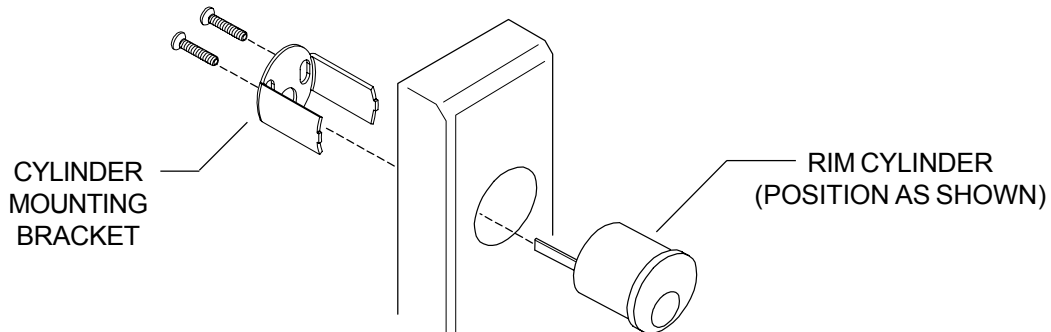
- 2B) MOUNT THE ELECTRIFIED MORTISE LOCK INTO THE DOOR (IF APPROPRIATE) PER DEVICE INSTRUCTION SHEET.
- 2C) CONNECT THE WIRES FROM THE SOLENOID IN THE MORTISE LOCK TO THE WIRES RUNNING THROUGH THE 18-M DEVICE (IF APPROPRIATE).



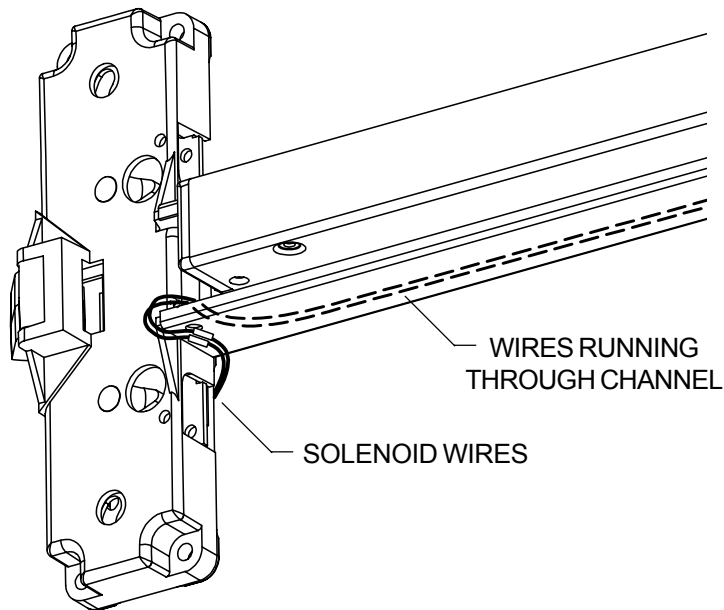
- 2D) THROUGH BOLT THE DEVICE AND TRIM AND PROCEED WITH DEVICE INSTALLATION.

3) RIM AND VERTICAL DEVICE INSTALLATION:

- 3A) ON TRIMS FOR RIM AND SURFACE VERTICAL ROD DEVICES, MOUNT THE RIM CYLINDER FOR THE KEY OVERRIDE FEATURE (IF DESIRED) TO THE TRIM USING THE 4873-089 CYLINDER MOUNTING BRACKET PROVIDED WITH THE TRIM.



- 3B) ON RIM & SURFACE VERTICAL ROD DEVICES, CHECK TO ENSURE THAT THE SOLENOID IS SECURELY CONNECTED TO THE WIRES RUNNING THROUGH THE DEVICE CHANNEL.



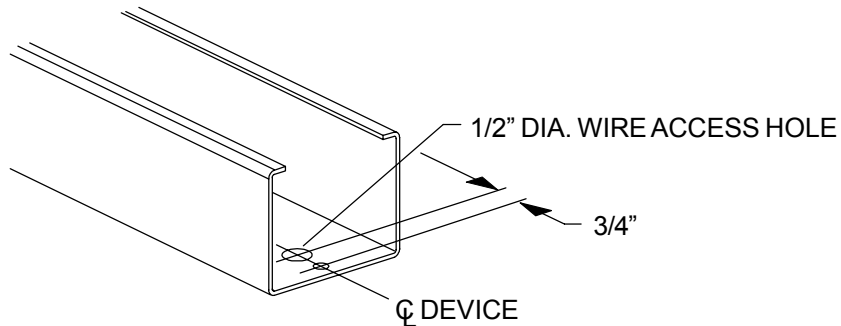
- 3C) THROUGH BOLT THE DEVICE AND TRIM AND PROCEED WITH DEVICE INSTALLATION.

- 4) AFTER DEVICE INSTALLATION, CONNECT DEVICE TO LUT-2 POWER SUPPLY AND PROCEED TO OPERATIONAL TEST ON PAGE 11.

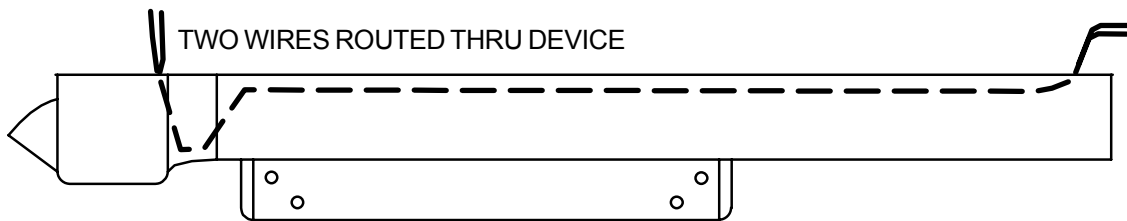
# 4C. 19 SERIES DEVICE SYSTEM INSTALLATION

- 1) DRILL 1/2" DIA. WIRE ACCESS HOLE IN HINGE END OF 19 SERIES EXIT DEVICE AND DEBURR.

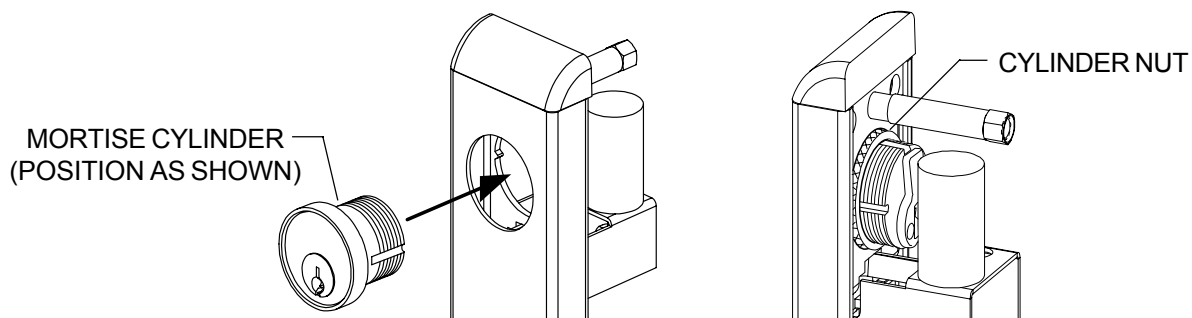
**NOTE: DO NOT DRILL THIS WIRE ACCESS HOLE UNTIL AFTER DEVICE HAS BEEN SIZED TO FIT DOOR (DEVICE SOMETIMES MUST BE CUT TO LENGTH). SEE DEVICE INSTRUCTIONS.**



- 2) VERIFY THAT THERE IS WIRE RUN FROM THE HEAD AREA OF THE DEVICE THROUGH THE PUSHBAR AND COMING OUT THE HINGE END OF THE DEVICE. THIS WILL BE USED FOR CONDUIT FOR THE ELECTRIFIED FEATURE.

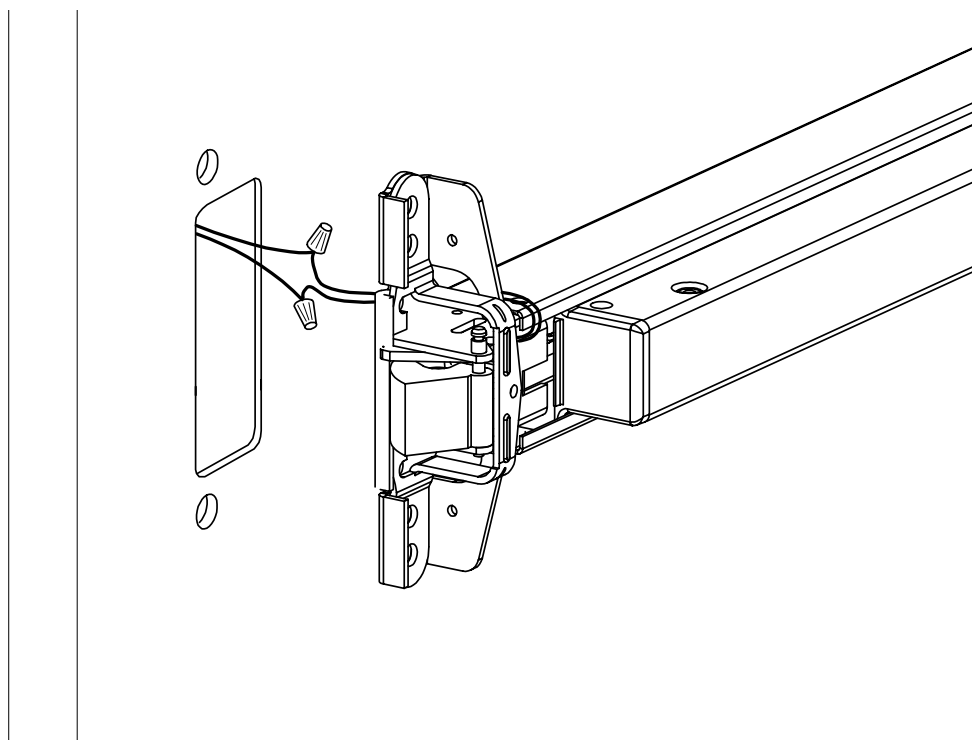


- 3) MOUNT THE MORTISE CYLINDER FOR THE KEY OVERRIDE FEATURE (IF DESIRED) TO THE TRIM USING THE CYLINDER NUT PROVIDED WITH THE TRIM.





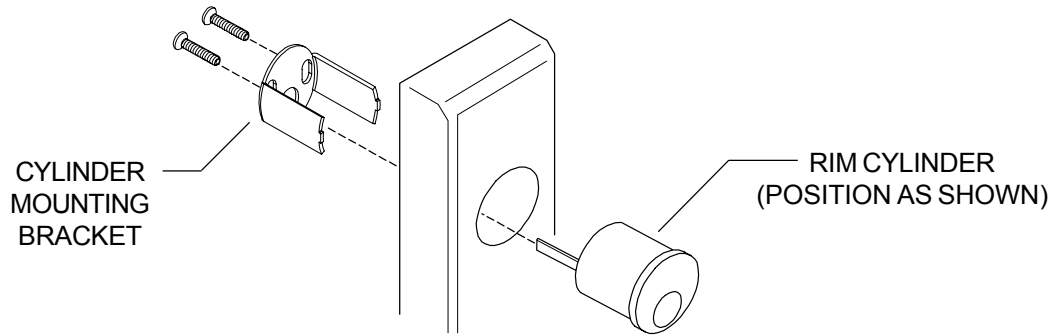
- 4) CONNECT THE WIRES FROM THE SOLENOID IN THE CONTROL TRIM TO THE WIRES RUNNING THROUGH THE 19 SERIES DEVICE.



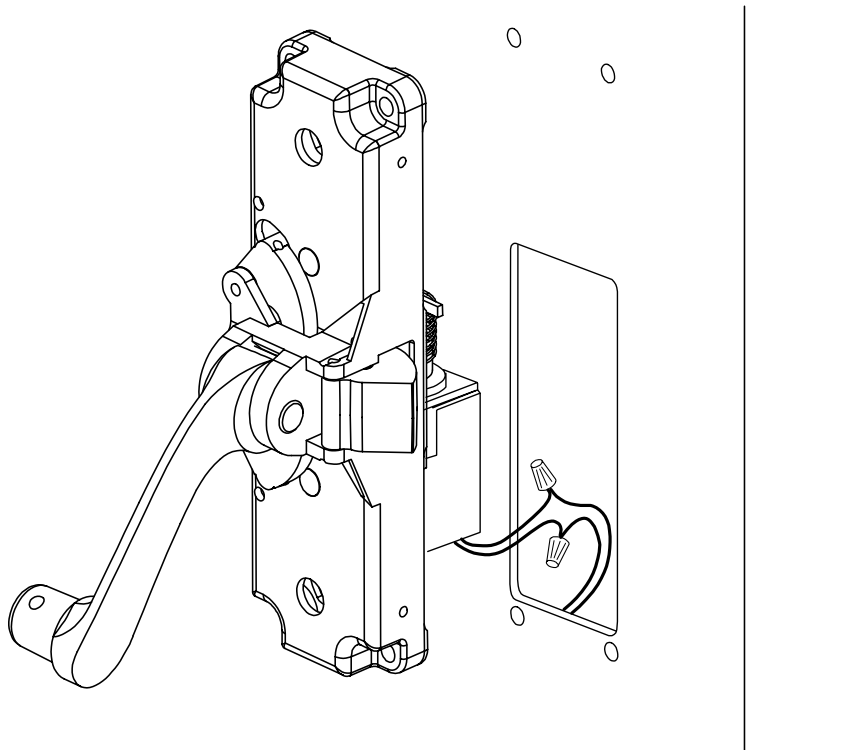
- 5) THROUGH BOLT THE DEVICE AND TRIM AND PROCEED WITH DEVICE INSTALLATION.
- 6) AFTER DEVICE INSTALLATION, CONNECT DEVICE TO LUT-2 POWER SUPPLY AND PROCEED TO OPERATIONAL TEST ON PAGE 11.

# 4D. XX SERIES DEVICE SYSTEM INSTALLATION

- 1) PULL WIRE FROM THE HINGE SIDE OF THE DOOR TO THE ACTIVE HEAD SIDE OF THE DOOR USING THE ROUTING PROVIDED BY THE DOOR MANUFACTURER OR INSTALLER
- 2) FOR RIM AND VERTICAL DEVICES, MOUNT THE RIM CYLINDER FOR THE KEY OVER-RIDE FEATURE (IF DESIRED) TO THE TRIM USING THE 4873-089 CYLINDER MOUNTING BRACKET PROVIDED WITH THE TRIM.



- 3) CONNECT THE WIRES FROM THE SOLENOID IN EITHER THE MORTISE LOCK OR THE ACTIVE HEAD TO THE WIRES PULLED THROUGH THE DOOR.



- 4) THROUGH BOLT THE ACTIVE HEAD AND TRIM AND PROCEED WITH DEVICE INSTALLATION.
- 5) AFTER DEVICE INSTALLATION, CONNECT DEVICE TO LUT-2 POWER SUPPLY AND PROCEED TO OPERATIONAL TEST ON PAGE 11.

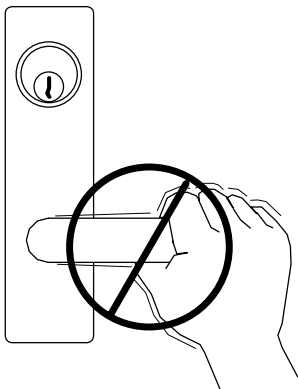
# 5 OPERATIONAL TEST

## FOR FSA (FAIL SAFE) DEVICES:

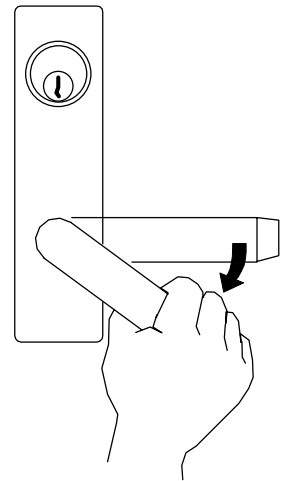
- 1) WITH POWER ENGAGED, THE TRIM WILL BE LOCKED.
- 2) FUNCTION THE CONTROL DEVICE OR DISCONNECT MAIN POWER FROM THE LUT-2, THE TRIM WILL UNLOCK.
- 3) WITH POWER ENGAGED, CHECK TO ENSURE THAT THE KEY-OVERRIDE FEATURE FUNCTIONS PROPERLY.

## FOR FSE (FAIL SECURE) DEVICES:

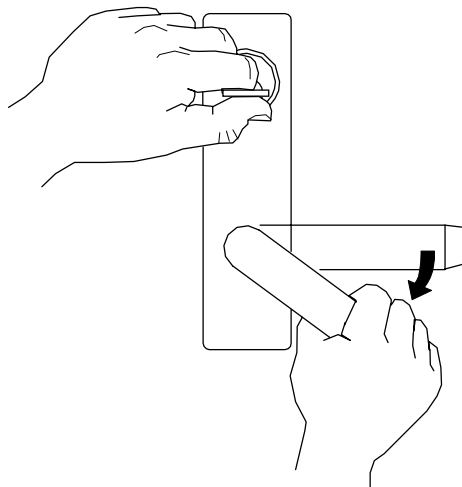
- 1) WITH POWER ENGAGED, THE TRIM WILL BE UNLOCKED.
- 2) FUNCTION THE CONTROL DEVICE OR DISCONNECT MAIN POWER FROM THE LUT-2, THE TRIM WILL LOCK.
- 3) WITH POWER DISENGAGED, CHECK TO ENSURE THAT THE KEY-OVERRIDE FEATURE FUNCTIONS PROPERLY.



**FSA ENERGIZED OR  
FSE DE-ENERGIZED  
(TRIM LOCKED)**



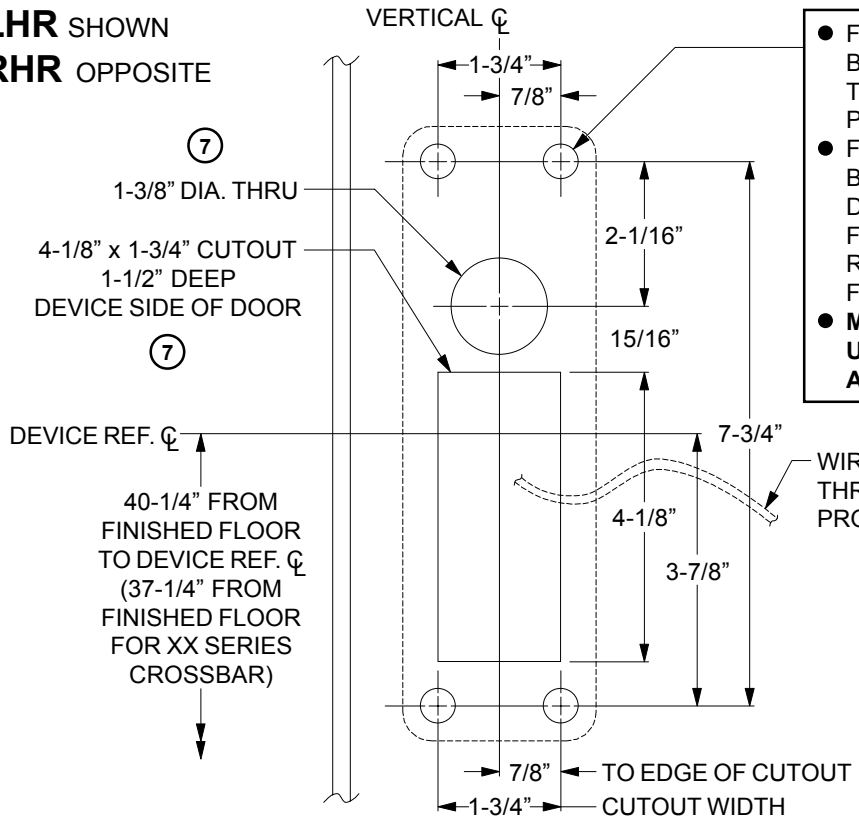
**FSA DE-ENERGIZED OR  
FSE ENERGIZED  
(TRIM UNLOCKED)**



**FSA ENERGIZED OR  
FSE DE-ENERGIZED  
(KEY OVERRIDE)**

TURN LEVER/KNOB OR  
DEPRESS THUMPIECE ON  
17 & 19 DEVICES. PULL ON  
LEVER/KNOB/PULL ON 18  
AND XX DEVICES

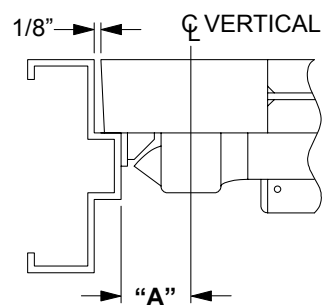
**LHR SHOWN**  
**RHR OPPOSITE**



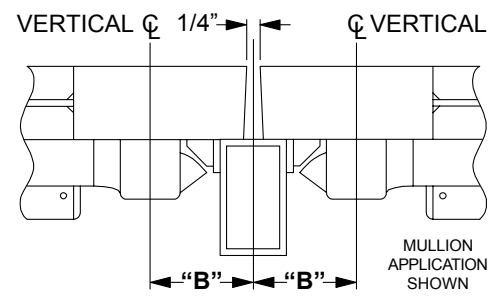
- FOR DEVICE WITH THRU-BOLTING TRIM, REFER TO TRIM TEMPLATE FOR DOOR PREPARATION
- FOR DEVICE WITH NON-THRU-BOLTING TRIM, DRILL 9/64" DIA. HOLE, OR DRILL AND TAP FOR #10-24 SCREW, OR REFER TO TEMPLATE T-4014 FOR SEX BOLTS (4 PLACES)
- **MACHINE SCREWS MUST BE USED FOR FIRE RATED APPLICATIONS**

**EFFECTIVE FOR PRODUCT SHIPPED AFTER**  
**09/01/2002**  
**PRIOR TO THIS DATE USE EXISTING TEMPLATES**

**SINGLE DOOR APPLICATION**



**DOUBLE DOOR APPLICATION**



STRIKE	INSTALLED	"A"	MIN. STILE
565	SURFACE	2"	3-3/4"
565	FLUSH	1-1/2"	3-1/4"
570	SURFACE	2-1/4"	4"
579	SURFACE	1-5/8"	3-1/2"
490	SURFACE	2-1/4"	4"
F-570	SURFACE	2-1/4"	4"
F-490	SURFACE	2-1/4"	4"

STRIKE	INSTALLED WITH	"B"	MIN. STILE
565	2923 MULLION	2-3/4"	4"
565	4023 MULLION	3"	4-1/4"
570	2923 MULLION	3"	4-1/4"
570	4023 MULLION	3-1/4"	4-1/2"
579	2923 MULLION	2-3/8"	3-5/8"
579	4023 MULLION	2-5/8"	3-7/8"
490	2923 MULLION	3"	4-1/4"
490	4023 MULLION	3-1/4"	4-1/2"
F-570	F-4023 MULLION	3-1/4"	4-1/2"
F-490	F-4023 MULLION	3-1/4"	4-1/2"
571	18/XX VERTICAL	2-7/8"	4-1/8"
571-A	18/XX VERTICAL	2-3/8"	3-5/8"

- FOR OUTSIDE TRIM PREPARATION, SEE TRIM TEMPLATE FOR DOOR PREPARATION.
- FOR SEX BOLT PREPARATION, WHEN REQUIRED, SEE TEMPLATE T-4014.
- SEE MASTER SHEET #0100 FOR SUGGESTED REINFORCING.

**NOTE:** 571 AND 571-A STRIKES ARE NOT APPROVED FOR FIRE RATED APPLICATIONS.

**DO NOT SCALE**

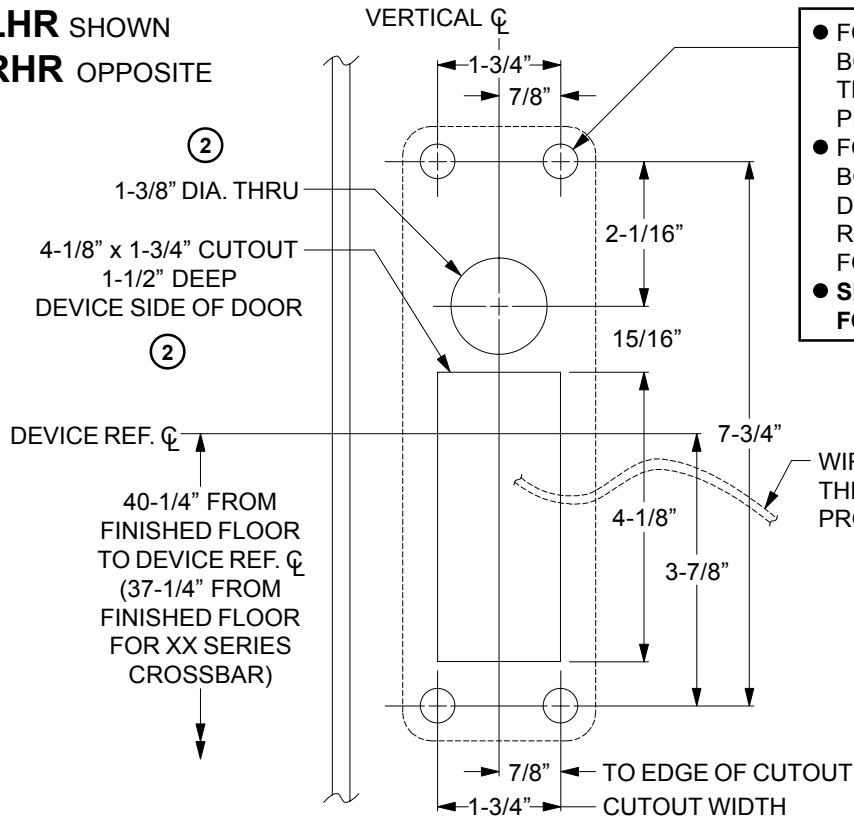
**FALCON**

Customer Service  
1-877-671-7011 www.allegion.com/us

TITLE: (F-)XX-R-KE, (F-)XX-R-LE,  
(F-)XX-R-T, (F-)XX-R-SE  
RIM DEVICES WITH FSA OR FSE  
ELECTRIC LOCKING FEATURE

DATE: 08-01-2002  
TEMPLATE NUMBER - REV.  
**T-5001-7**

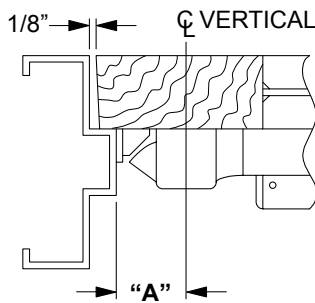
**LHR SHOWN**  
**RHR OPPOSITE**



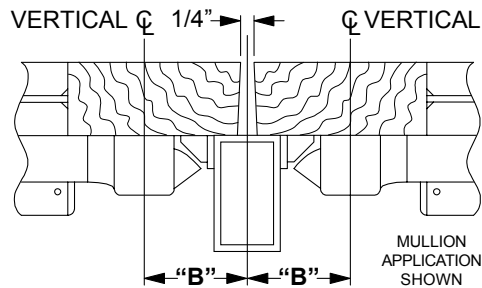
- FOR DEVICE WITH THRU-BOLTING TRIM, REFER TO TRIM TEMPLATE FOR DOOR PREPARATION
- FOR DEVICE WITH NON-THRU-BOLTING TRIM, DRILL 9/64\" DIA. HOLE x 1-1/4\" DEEP OR REFER TO TEMPLATE W-4014 FOR SEX BOLTS (4 PLACES)
- **SEX BOLTS MUST BE USED FOR FIRE RATED APPLICATIONS**

**EFFECTIVE FOR PRODUCT SHIPPED AFTER**  
**09/01/2002**  
**PRIOR TO THIS DATE USE EXISTING TEMPLATES**

**SINGLE DOOR APPLICATION**



**DOUBLE DOOR APPLICATION**



STRIKE	INSTALLED	"A"	MIN. STILE
565	SURFACE	2"	3-3/4"
565	FLUSH	1-1/2"	3-1/4"
570	SURFACE	2-1/4"	4"
579	SURFACE	1-5/8"	3-1/2"
490	SURFACE	2-1/4"	4"
F-570	SURFACE	2-1/4"	4"
F-490	SURFACE	2-1/4"	4"

STRIKE	INSTALLED WITH	"B"	MIN. STILE
565	2923 MULLION	2-3/4"	4"
565	4023 MULLION	3"	4-1/4"
570	2923 MULLION	3"	4-1/4"
570	4023 MULLION	3-1/4"	4-1/2"
579	2923 MULLION	2-3/8"	3-5/8"
579	4023 MULLION	2-5/8"	3-7/8"
490	2923 MULLION	3"	4-1/4"
490	4023 MULLION	3-1/4"	4-1/2"
F-570	F-4023 MULLION	3-1/4"	4-1/2"
F-490	F-4023 MULLION	3-1/4"	4-1/2"
571	18/XX VERTICAL	2-7/8"	4-1/8"
571-A	18/XX VERTICAL	2-3/8"	3-5/8"

- FOR OUTSIDE TRIM PREPARATION, SEE TRIM TEMPLATE FOR DOOR PREPARATION.
- FOR SEX BOLT PREPARATION, WHEN REQUIRED, SEE TEMPLATE W-4014.

**NOTE: 571 AND 571-A STRIKES ARE NOT APPROVED FOR FIRE RATED APPLICATIONS.**

**DO NOT SCALE**

**FALCON**

Customer Service  
1-877-671-7011 www.allegion.com/us

TITLE: (F-)XX-R-KE, (F-)XX-R-LE,  
(F-)XX-R-T, (F-)XX-R-SE RIM DEVICES  
WITH FSA OR FSE  
ELECTRIC LOCKING FEATURE  
WOOD DOOR

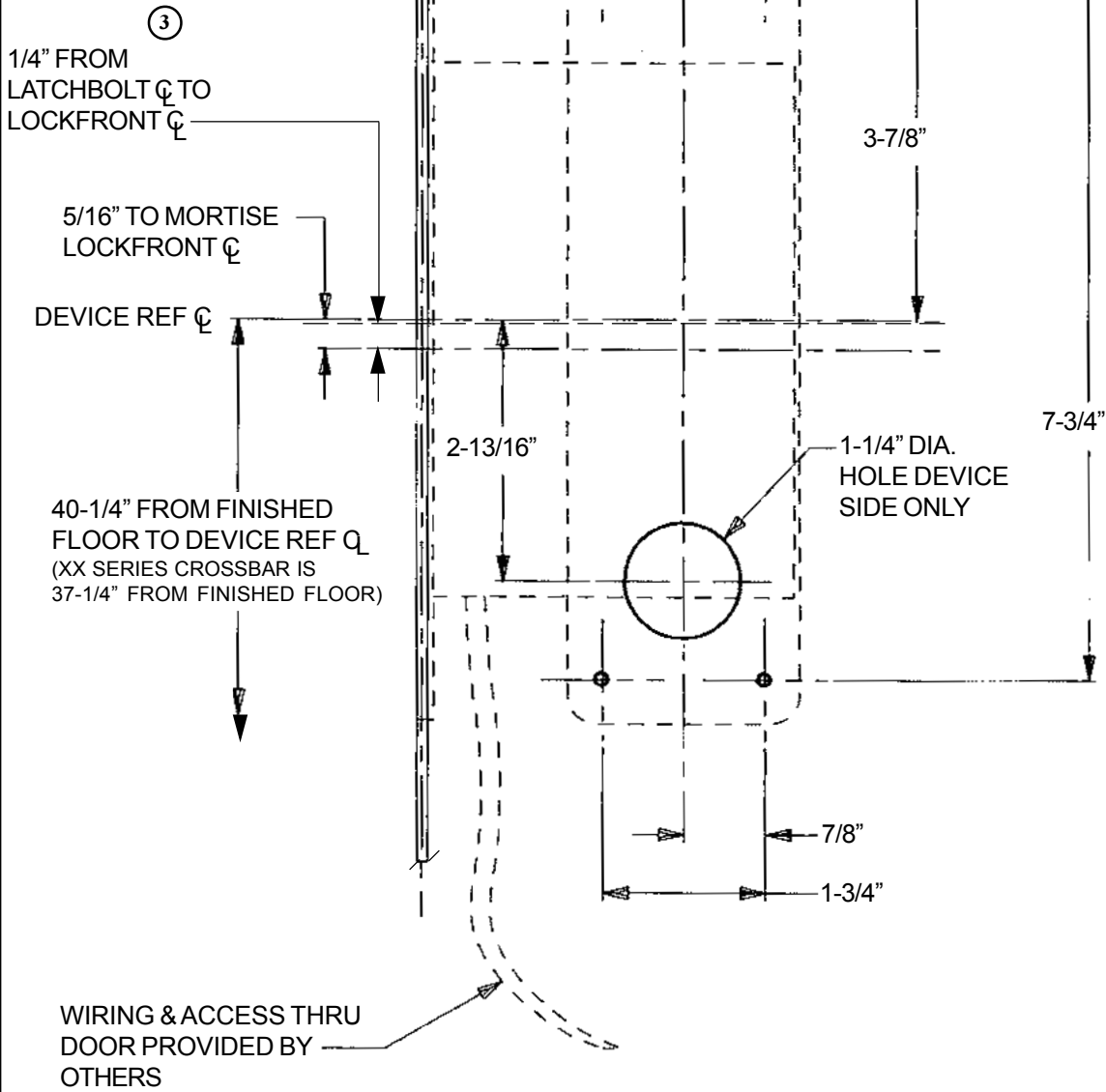
DATE: 08-01-2002

TEMPLATE NUMBER - REV.

**W-5001-2**

**LHR** SHOWN  
**RHR** OPPOSITE

- FOR DEVICE WITH THRU-BOLTING TRIM, REFER TO TRIM TEMPLATE FOR DOOR PREPARATION.
- FOR DEVICE WITH NON-THRU-BOLTING TRIM: DRILL 9/64" DIA. HOLE OR DRILL & TAP FOR #10-24 SCREW (4 HOLES) **FIRE RATED DEVICES MUST USE MACHINE SCREWS**



- SEE TEMPLATE T-4012 FOR MORTISE LOCK PREPARATION
- FOR DOORS WITH EXISTING MORTISE LOCK PREPARATION, THE DEVICE REF  $\varnothing$  IS 5/16" ABOVE THE LOCKFRONT  $\varnothing$
- FOR SEXBOLT PREPARATION, WHEN REQUIRED, REFER TO TEMPLATE T-4014
- FOR OUTSIDE TRIM PREPARATION, SEE ADDITIONAL TRIM TEMPLATE FOR DOOR PREPARATION
- SEE MASTER SHEET #0100 FOR SUGGESTED REINFORCING

**DO NOT SCALE**

**FALCON**<sup>®</sup>

Customer Service  
1-877-671-7011 www.allegion.com/us

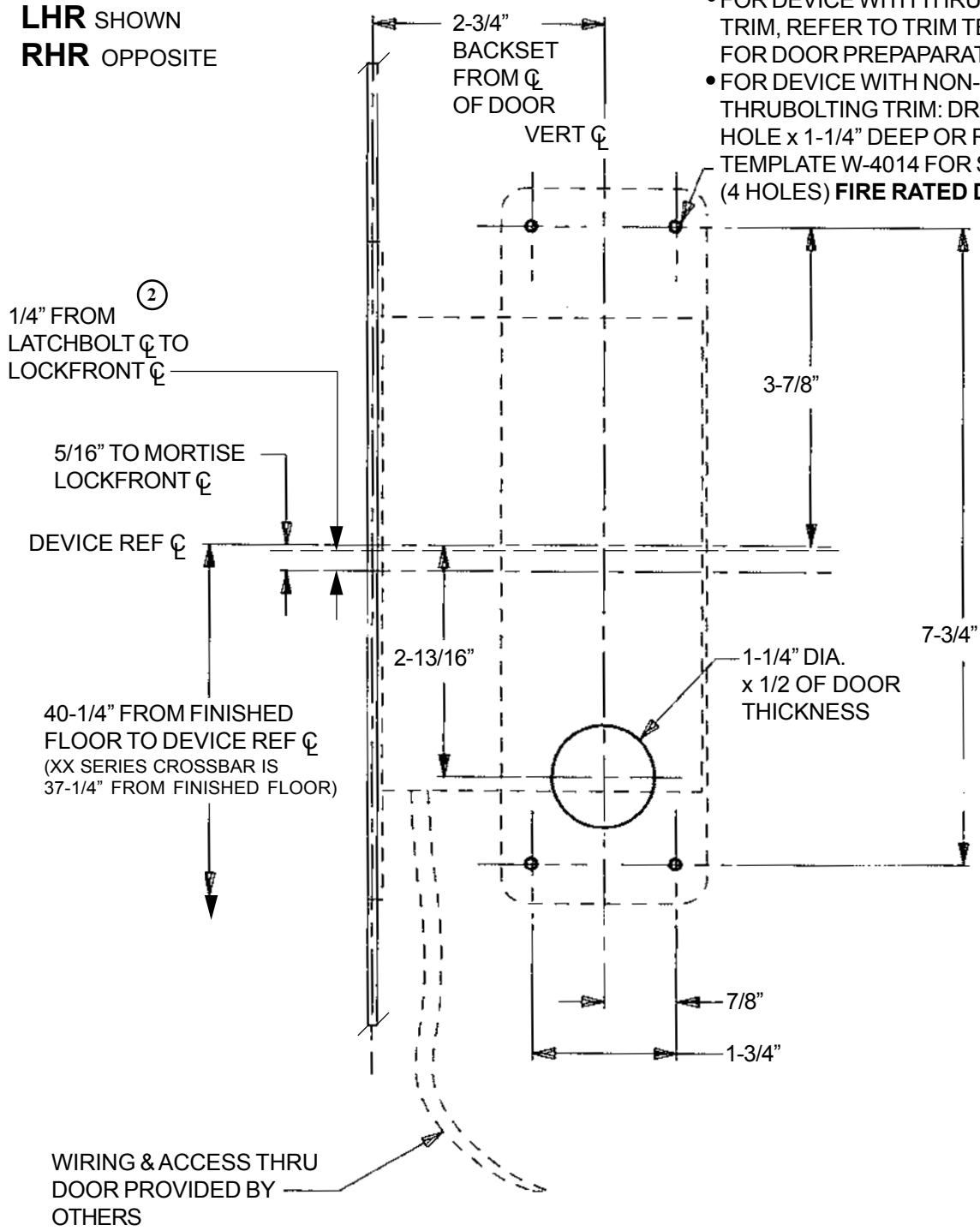
TITLE:  
**(F)XX-M-KE, (F)XX-M-LE, (F)XX-M-T,  
(F)XX-M-SE MORTISE DEVICES WITH FSA OR  
FSE ELECTRIC LOCKING FEATURE**

DATE: 1-1-2001  
TEMPLATE NUMBER - REV.  
**T-5010-3**

LHR SHOWN  
RHR OPPOSITE

- FOR DEVICE WITH THRUBOLTING TRIM, REFER TO TRIM TEMPLATE FOR DOOR PREPARATION.
- FOR DEVICE WITH NON-THRUBOLTING TRIM: DRILL 9/64" DIA. HOLE x 1-1/4" DEEP OR REFER TO TEMPLATE W-4014 FOR SEXBOLTS (4 HOLES) **FIRE RATED DEVICES**

**REQUIRE SEXBOLTS**



- SEE TEMPLATE W-4012 FOR MORTISE LOCK PREPARATION
- FOR DOORS WITH EXISTING MORTISE LOCK PREPARATION, THE DEVICE REF  $\varnothing$  IS 5/16" ABOVE THE LOCKFRONT  $\varnothing$
- FOR SEXBOLT PREPARATION, WHEN REQUIRED, REFER TO TEMPLATE W-4014
- FOR OUTSIDE TRIM PREPARATION, SEE ADDITIONAL TRIM TEMPLATE FOR DOOR PREPARATION

**DO NOT SCALE**

**FALCON**  
Customer Service  
1-877-671-7011 www.allegion.com/us

TITLE: (F)XX-M-KE, (F)XX-M-LE, (F)XX-M-T, (F)XX-M-SE MORTISE DEVICES WITH FSA OR FSE ELECTRIC LOCKING FEATURE WOOD DOOR

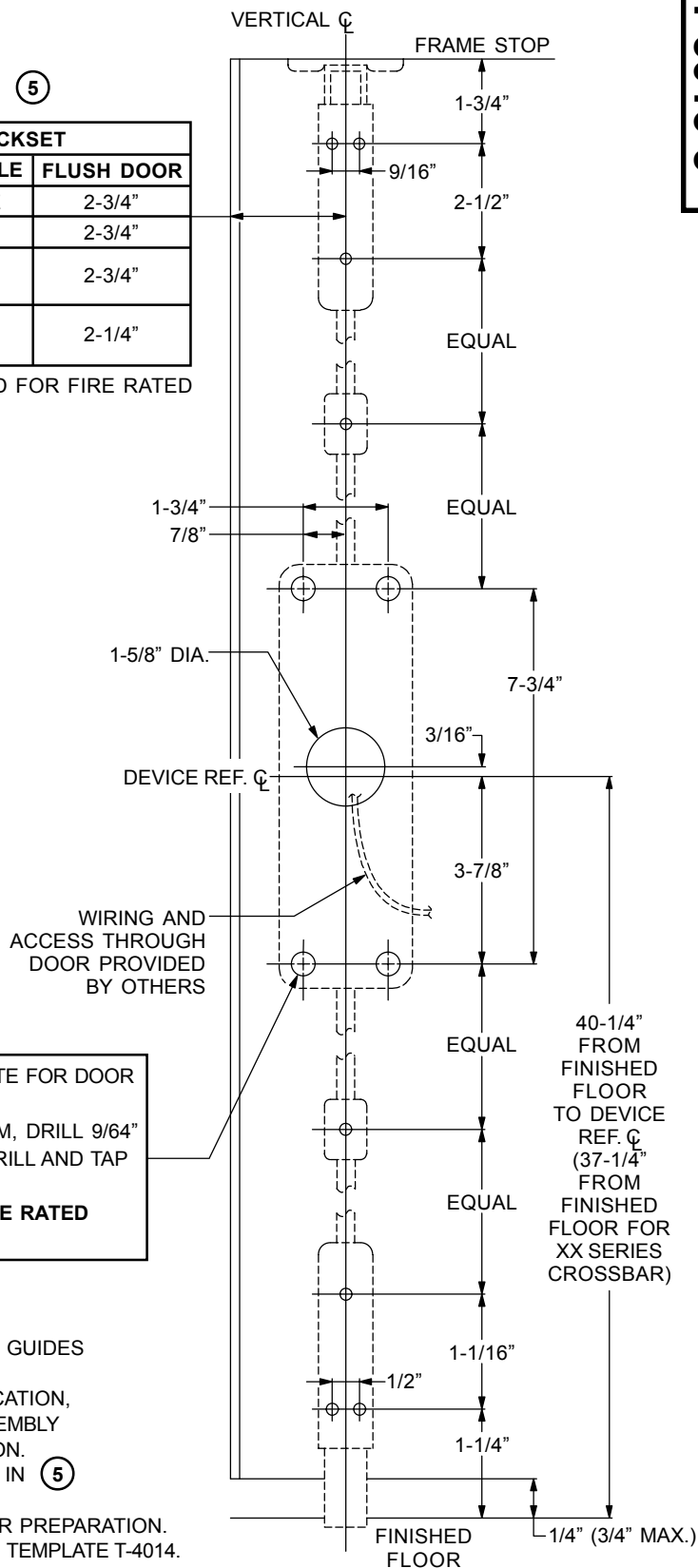
DATE: 1-1-2001  
TEMPLATE NUMBER - REV. **W-5010-2**

**LHR** SHOWN; **RHR** OPPOSITE

⑤

INSTALLATION	BACKSET	
	3-1/2" MIN. STILE	FLUSH DOOR
TWO VERTICAL ROD DEVICES	1/2 OF STILE	2-3/4"
VERTICAL ROD x MORTISE DEVICE	2-3/4"	2-3/4"
VERTICAL ROD x RIM DEVICE (USING 571 STRIKE)	2-3/4"	2-3/4"
VERTICAL ROD x RIM DEVICE (USING 571-A STRIKE)	2-1/4"	2-1/4"

**NOTE:** 571 AND 571-A STRIKES ARE NOT APPROVED FOR FIRE RATED APPLICATIONS.



- FOR THRU-BOLTING TRIM, SEE TRIM TEMPLATE FOR DOOR PREPARATION
  - FOR DEVICE WITH NON-THRU-BOLTING TRIM, DRILL 9/64" DIA. HOLE FOR SHEET METAL SCREW OR DRILL AND TAP
  - FOR #10-24 SCREW (4 PLACES)
- MACHINE SCREWS MUST BE USED FOR FIRE RATED APPLICATIONS**

- FOR APPLICATIONS OVER 8 FT., INSTALL TWO ROD GUIDES EQUALLY SPACED ON TOP ROD.
- FOR FIRE RATED LESS BOTTOM ROD (LBR) APPLICATION, REFER TO TEMPLATE T-4310 FOR SPRING BOLT ASSEMBLY PREPARATION AND OMIT BOTTOM ROD PREPARATION.
- LESS BOTTOM ROD (LBR) DEVICE CANNOT BE USED IN ⑤ CONJUNCTION WITH MORTISE OR RIM DEVICES.
- FOR OUTSIDE TRIM, SEE TRIM TEMPLATE FOR DOOR PREPARATION.
- FOR SEX BOLT PREPARATION, WHEN REQUIRED, SEE TEMPLATE T-4014.
- SEE MASTER SHEET #0100 FOR SUGGESTED REINFORCING.

**DO NOT SCALE**

**FALCON**

Customer Service

1-877-671-7011 www.allegion.com/us

TITLE: (F-)XX-V-KE, (F-)XX-V-LE,  
(F-)XX-V-T, (F-)XX-V-SE

**SURFACE VERTICAL ROD DEVICES WITH  
FSA OR FSE ELECTRIC LOCKING FEATURE**

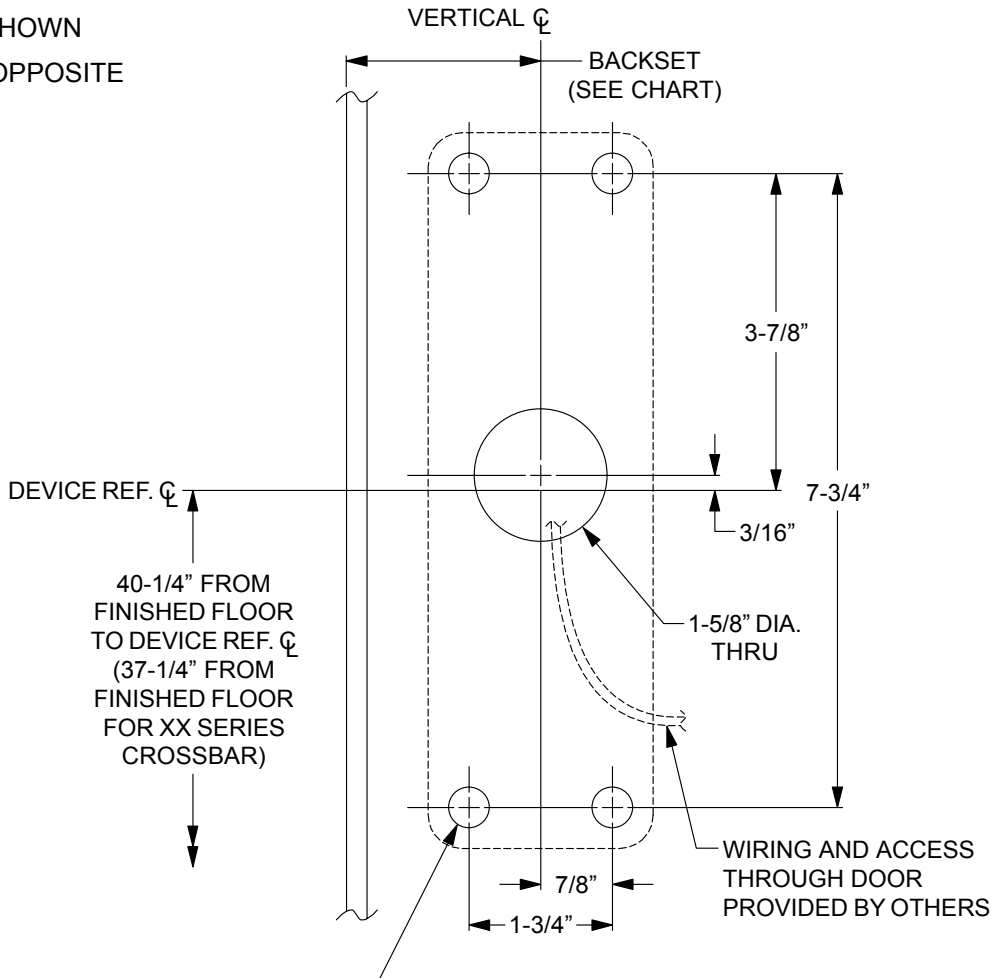
DATE: 08-01-2002

TEMPLATE NUMBER - REV.

**T-5016-5**



**LHR** SHOWN  
**RHR** OPPOSITE



- FOR DEVICE WITH THRU-BOLTING TRIM, REFER TO TRIM TEMPLATE FOR DOOR PREPARATION
- FOR DEVICE WITH NON-THRU-BOLTING TRIM, DRILL 9/64" DIA. HOLE x 1-1/4" DEEP OR REFER TO TEMPLATE W-4014 FOR SEX BOLTS (4 PLACES)
- **SEX BOLTS MUST BE USED FOR FIRE RATED APPLICATIONS**

INSTALLATION	BACKSET	
	3-1/2" MIN. STILE	FLUSH DOOR
TWO VERTICAL ROD DEVICES	1/2 OF STILE	2-3/4"
VERTICAL ROD x MORTISE DEVICE	2-3/4"	2-3/4"
VERTICAL ROD x RIM DEVICE (USING 571 STRIKE)	2-3/4"	2-3/4"
VERTICAL ROD x RIM DEVICE (USING 571-A STRIKE)	2-1/4"	2-1/4"

②

**NOTE:** 571 AND 571-A STRIKES ARE NOT APPROVED FOR FIRE RATED APPLICATIONS.

- FOR LESS BOTTOM ROD (LBR) APPLICATION (20 MINUTE RATING), REFER TO TEMPLATE W-4310 FOR SPRING BOLT ASSEMBLY PREPARATION AND OMIT BOTTOM ROD PREPARATION.
- LESS BOTTOM ROD (LBR) DEVICE CANNOT BE USED IN CONJUNCTION WITH MORTISE OR RIM DEVICES. ②
- FOR OUTSIDE TRIM PREPARATION, SEE TRIM TEMPLATE FOR DOOR PREPARATION.
- PREPARE TOP AND BOTTOM LATCHES/BOLTS AT TIME OF DEVICE INSTALLATION.
- FOR SEX BOLT PREPARATION, WHEN REQUIRED, SEE TEMPLATE W-4014.

**DO NOT SCALE**

**FALCON**

Customer Service  
1-877-671-7011 www.allegion.com/us

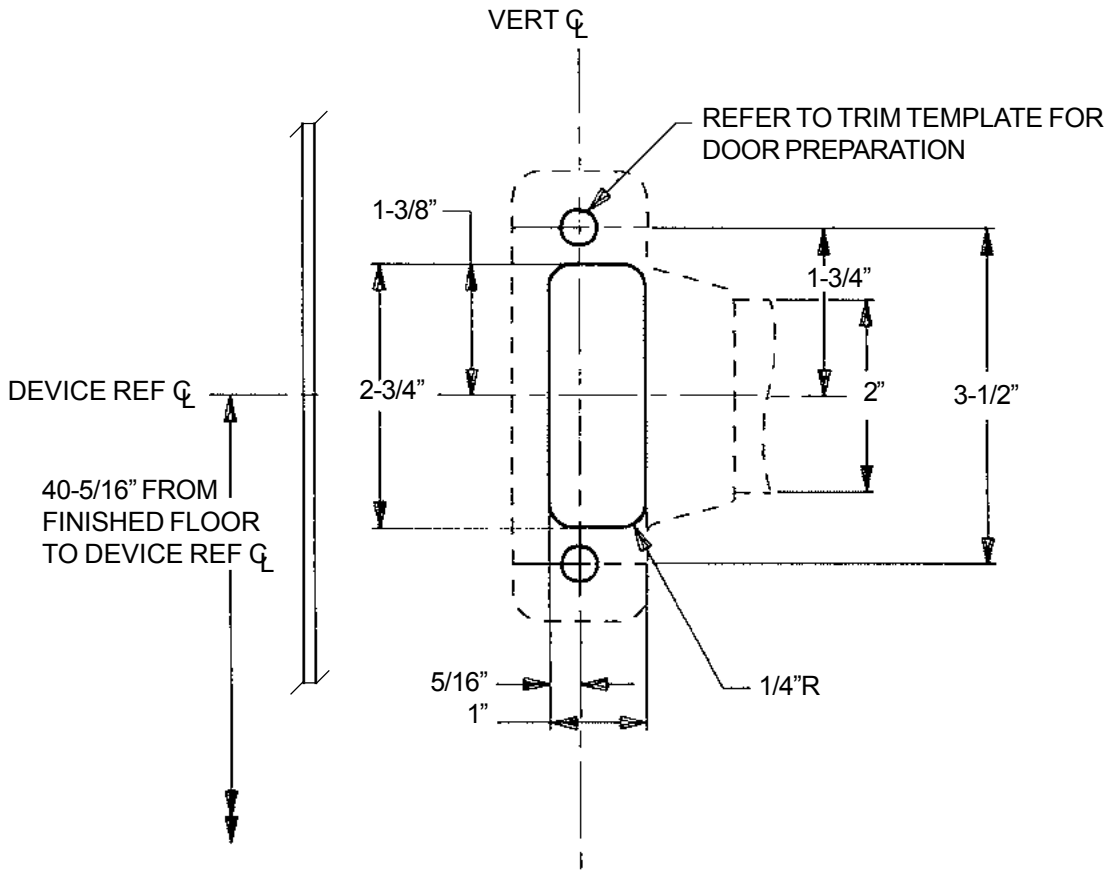
TITLE: (F-)XX-V-KE, (F-)XX-V-LE, (F-)XX-V-T,  
(F-)XX-V-SE SURFACE VERTICAL  
ROD DEVICES WITH FSA OR FSE  
ELECTRIC LOCKING FEATURE  
WOOD DOOR

DATE: 08-01-2002

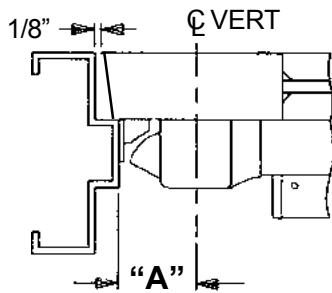
TEMPLATE NUMBER - REV.

**W-5016-2**

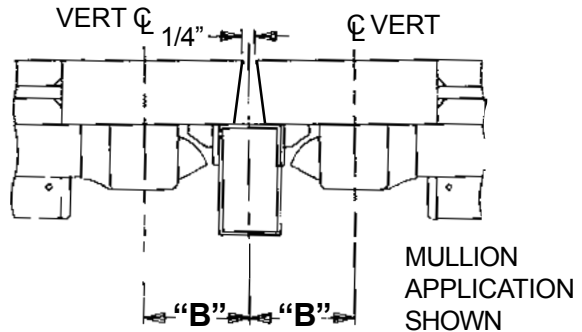
LHR SHOWN  
RHR OPPOSITE



**SINGLE DOOR APPLICATION**



**DOUBLE DOOR APPLICATION**



STRIKE	INSTALLED	"A"	MIN. STILE
565	SURFACE	1-7/16"	2-7/8"
565	FLUSH	15/16"	2"
560	SURFACE	1-5/8"	3-1/2"
F-570	SURFACE	1-5/8"	3-1/2"
F-490	SURFACE	1-5/8"	3-1/2"

STRIKE	INSTALLED WITH	"B"	MIN. STILE
565	2923 MULLION	2-3/16"	3-1/8"
565	4023 MULLION	2-7/16"	3-3/8"
560	2923 MULLION	2-3/8"	3-1/2"
560	4023 MULLION	2-5/8"	3-3/4"
F-570	F-4023 MULLION	2-5/8"	3-3/4"
F-490	F-4023 MULLION	2-5/8"	3-3/4"
571	19 VERTICAL	2-5/16"	3-1/4"
571-A	19 VERTICAL	1-13/16"	2-3/4"

- FOR OUTSIDE TRIM PREPARATION, SEE ADDITIONAL TRIM TEMPLATE FOR DOOR PREPARATION
- SEE MASTER SHEET #0100 FOR SUGGESTED REINFORCING

NOTE: 571 & 571-A STRIKES ARE NOT APPROVED FOR FIRE RATED APPLICATIONS **DO NOT SCALE**



**FALCON**

Customer Service  
1-877-671-7011 www.allegion.com/us

TITLE:  
(F)19-R-K, (F)19-R-L, (F)19-R-T,  
(F)19-R-SE RIM DEVICES WITH FSA OR FSE  
ELECTRIC LOCKING FEATURE

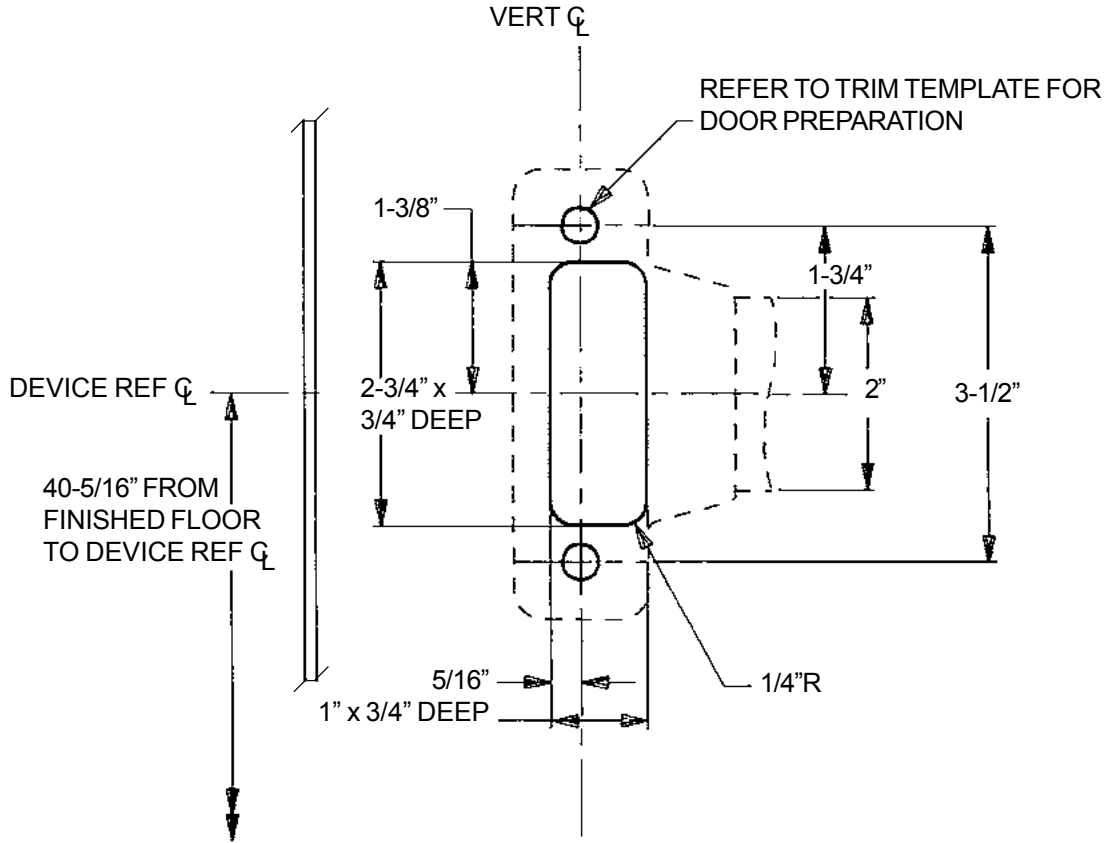
DATE: 1-15-2000

TEMPLATE NUMBER - REV.

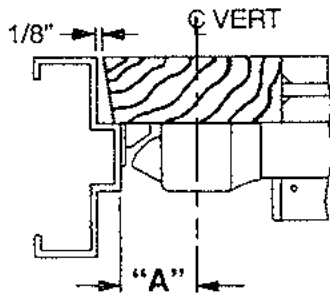
**T-5100-4**

LHR SHOWN  
RHR OPPOSITE

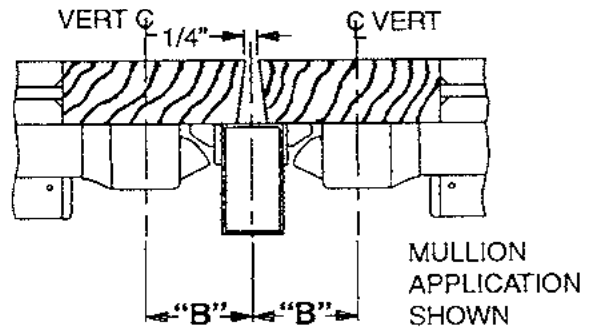
W-5100-1



**SINGLE DOOR APPLICATION**



**DOUBLE DOOR APPLICATION**



STRIKE	INSTALLED	"A"	MIN. STILE
565	SURFACE	1-7/16"	2-7/8"
565	FLUSH	15/16"	2"
560	SURFACE	1-5/8"	3-1/2"
F-570	SURFACE	1-5/8"	3-1/2"
F-490	SURFACE	1-5/8"	3-1/2"

STRIKE	INSTALLED WITH	"B"	MIN. STILE
565	2923 MULLION	2-3/16"	3-1/8"
565	4023 MULLION	2-7/16"	3-3/8"
560	2923 MULLION	2-3/8"	3-1/2"
560	4023 MULLION	2-5/8"	3-3/4"
F-570	F-4023 MULLION	2-5/8"	3-3/4"
F-490	F-4023 MULLION	2-5/8"	3-3/4"
571	19 VERTICAL	2-5/16"	3-1/4"
571-A	19 VERTICAL	1-13/16"	2-3/4"

NOTE: 571 & 571-A STRIKES ARE NOT APPROVED FOR FIRE RATED APPLICATIONS **DO NOT SCALE**

**FALCON**

Customer Service

1-877-671-7011 www.allegion.com/us

TITLE: (F)19-R-K, (F)19-R-L, (F)19-R-T,  
(F)19-R-SE RIM DEVICES WITH FSA OR FSE  
ELECTRIC LOCKING FEATURE  
WOOD DOOR

①

DATE: 1-15-2000

TEMPLATE NUMBER - REV.

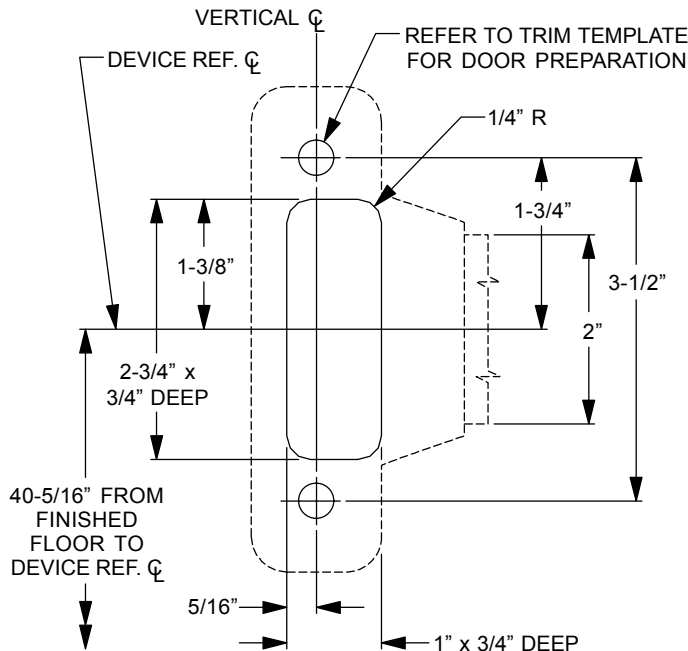
**W-5100-1**

LHR SHOWN; RHR OPPOSITE

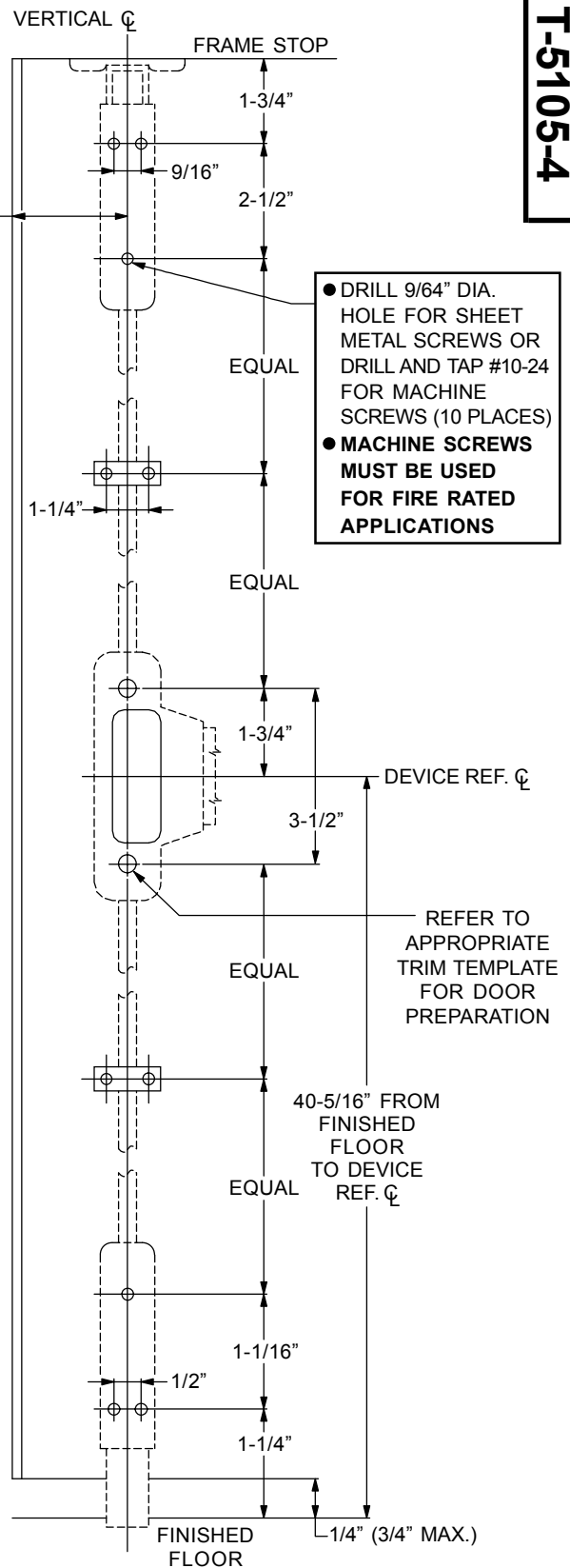
T-5105-4

2" BACKSET (TWO VERTICAL ROD DEVICES, 3-1/2" STILE)

④



- FOR APPLICATIONS OVER 8 FT., INSTALL TWO ROD GUIDES EQUALLY SPACED ON TOP ROD.
- FOR FIRE RATED LESS BOTTOM ROD (LBR) APPLICATION, REFER TO TEMPLATE T-4310 FOR SPRING BOLT ASSEMBLY PREPARATION AND OMIT BOTTOM ROD PREPARATION.
- LESS BOTTOM ROD (LBR) DEVICE CANNOT BE ④ USED IN CONJUNCTION WITH RIM DEVICES.
- FOR OUTSIDE TRIM, SEE TRIM TEMPLATE FOR DOOR PREPARATION.
- FOR SEX BOLT PREPARATION, WHEN REQUIRED, SEE TEMPLATE T-4014.
- SEE MASTER SHEET #0100 FOR SUGGESTED REINFORCING.



**DO NOT SCALE**

**FALCON**<sup>®</sup>

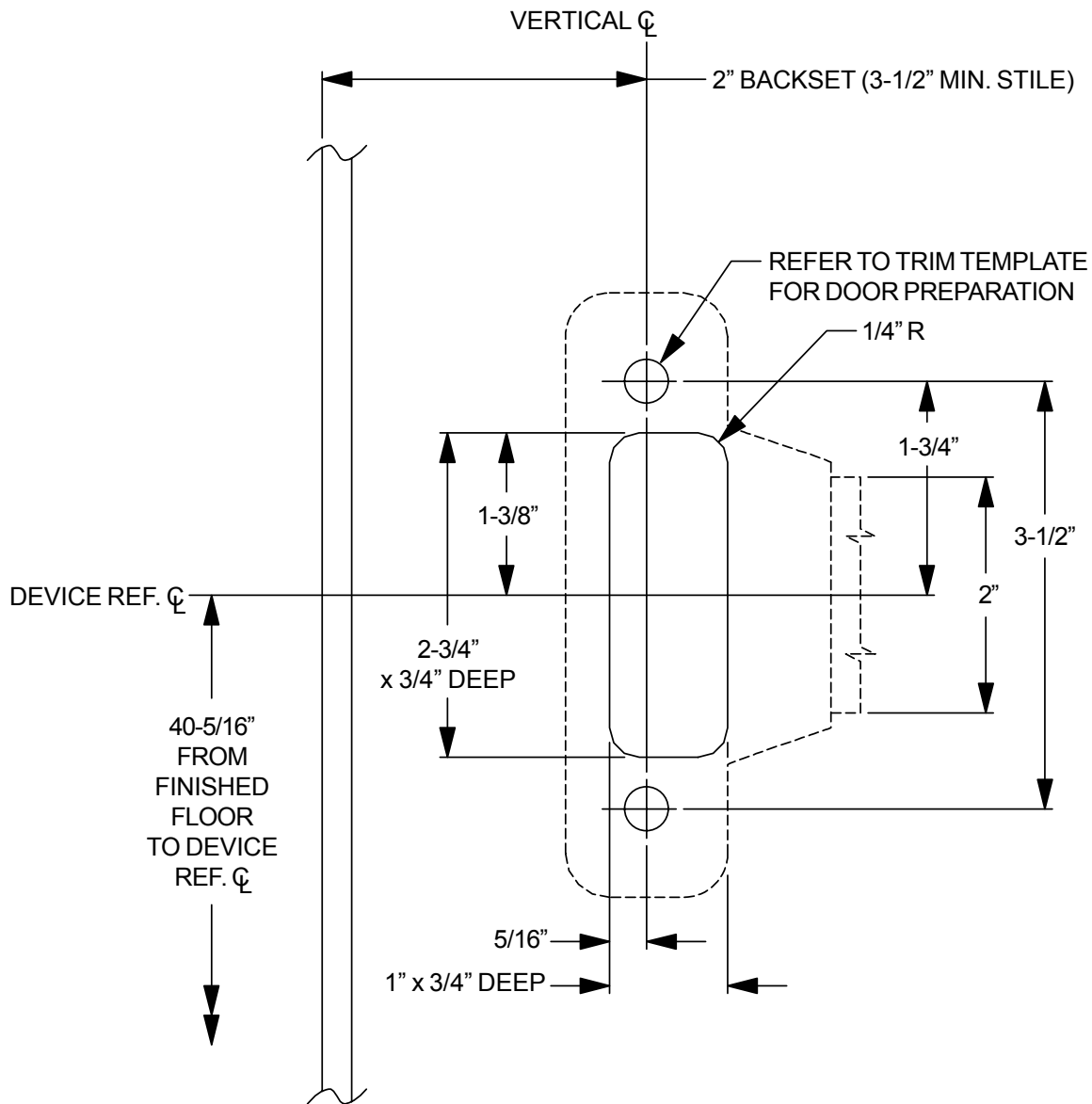
Customer Service  
1-877-671-7011 www.allegion.com/us

TITLE: (F-)19-V-K, (F-)19-V-L,  
(F-)19-V-T, (F-)19-V-SE  
**SURFACE VERTICAL ROD DEVICES WITH  
FSA OR FSE ELECTRIC LOCKING FEATURE**

DATE: 08-01-2002  
TEMPLATE NUMBER - REV.  
**T-5105-4**

LHR SHOWN  
RHR OPPOSITE

W-5105-2



- FOR LESS BOTTOM ROD (LBR) APPLICATION (20 MINUTE RATING), REFER TO TEMPLATE W-4310 FOR SPRING BOLT ASSEMBLY PREPARATION AND OMIT BOTTOM ROD PREPARATION.
- LESS BOTTOM ROD (LBR) DEVICE CANNOT BE USED IN CONJUNCTION WITH RIM DEVICES. ②
- PREPARE TOP AND BOTTOM LATCHES/BOLTS AT TIME OF DEVICE INSTALLATION.

**DO NOT SCALE**

**FALCON**

Customer Service  
1-877-671-7011 www.allegion.com/us

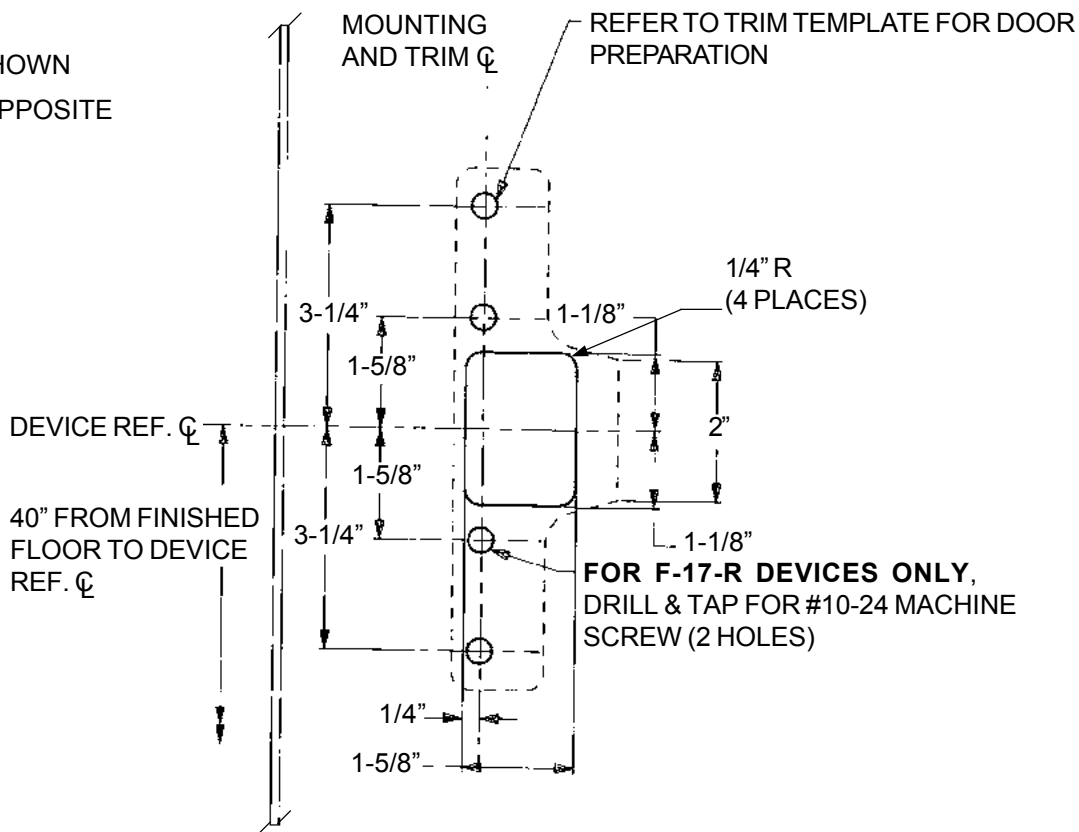
TITLE: (F-)19-V-K, (F-)19-V-L, (F-)19-V-T,  
(F-)19-V-SE SURFACE VERTICAL  
ROD DEVICES WITH FSA OR FSE  
ELECTRIC LOCKING FEATURE  
WOOD DOOR

DATE: 08-01-2002

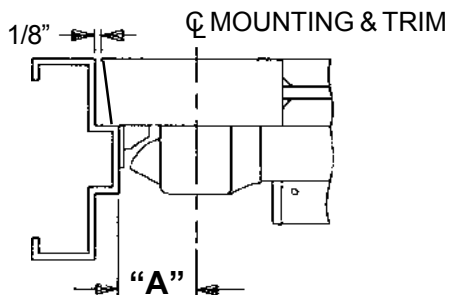
TEMPLATE NUMBER - REV.

**W-5105-2**

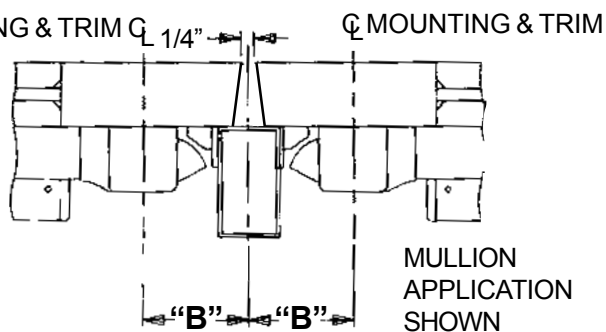
**LHR** SHOWN  
**RHR** OPPOSITE



**SINGLE DOOR APPLICATION**



**DOUBLE DOOR APPLICATION**



STRIKE	INSTALLED	"A"	MIN. STILE
565	SURFACE	1-1/8"	3-1/4"
565	FLUSH	3/4"	2-3/8"
570	SURFACE	1-7/16"	3-1/2"
579	SURFACE	13/16"	2-7/8"
490	SURFACE	1-7/16"	3-1/2"
F-570	SURFACE	1-7/16"	3-1/2"
F-490	SURFACE	1-7/16"	3-1/2"

STRIKE	INSTALLED WITH	"B"	MIN. STILE
565	2923 MULLION	1-7/8"	3-3/8"
565	4023 MULLION	2-1/8"	3-5/8"
570	2923 MULLION	2-3/16"	3-3/4"
570	4023 MULLION	2-7/16"	4"
579	2923 MULLION	1-9/16"	3-1/4"
579	4023 MULLION	1-13/16"	3-1/2"
490	2923 MULLION	2-3/16"	3-3/4"
490	4023 MULLION	2-7/16"	4"
4396	4423 MULLION	1-1/8"	2-5/8"
571	17 VERTICAL	2-3/16"	3-3/4"
571-A	17 VERTICAL	1-11/16"	3-1/4"

- FOR SEXBOLT PREPARATION, WHEN REQUIRED, REFER TO TEMPLATE T-4014
- SEE MASTER SHEET #0100 FOR SUGGESTED REINFORCING

NOTE: THE 571 & 571-A STRIKES ARE NOT APPROVED FOR FIRE RATED APPLICATIONS

6

**DO NOT SCALE**

**FALCON**

Customer Service

1-877-671-7011 www.allegion.com/us

TITLE:

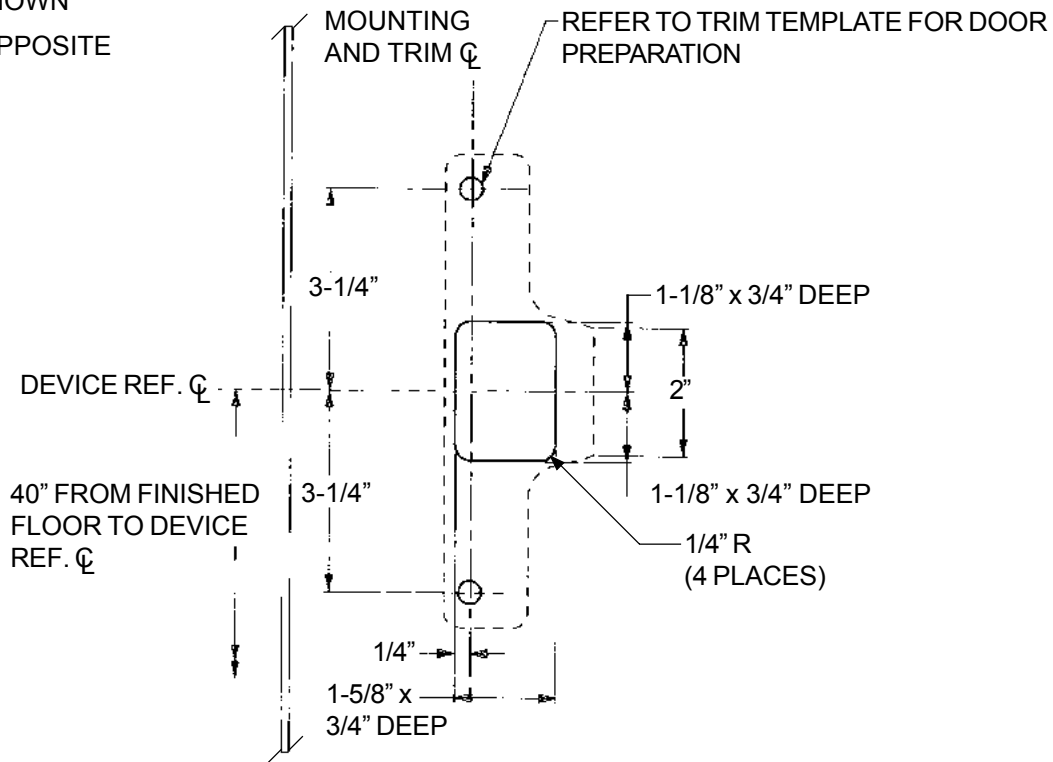
(F)17-R-K, (F)17-R-L, (F)17-R-T,  
(F)17-R-SE RIM DEVICES WITH FSA OR FSE  
ELECTRIC LOCKING FEATURE

DATE: 1-15-2000

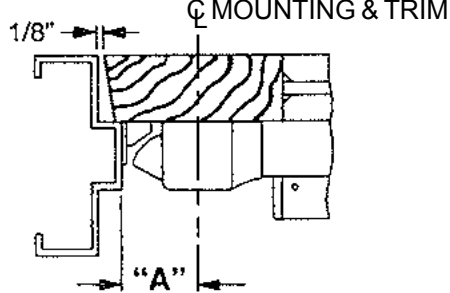
TEMPLATE NUMBER - REV.

**T-5120-6**

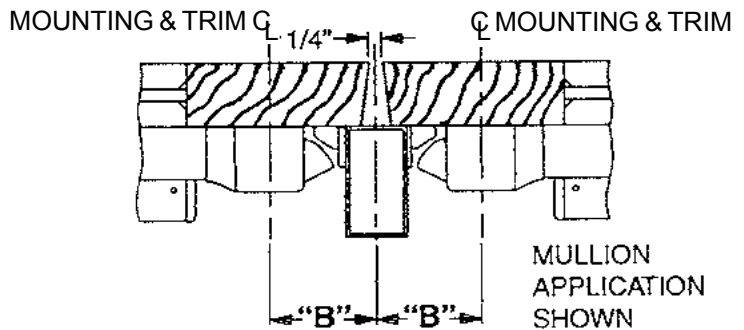
**LHR** SHOWN  
**RHR** OPPOSITE



**SINGLE DOOR APPLICATION**



**DOUBLE DOOR APPLICATION**



STRIKE	INSTALLED	"A"	MIN. STILE
565	SURFACE	1-1/8"	3-1/4"
565	FLUSH	3/4"	2-3/8"
570	SURFACE	1-7/16"	3-1/2"
579	SURFACE	13/16"	2-7/8"
490	SURFACE	1-7/16"	3-1/2"
F-570	SURFACE	1-7/16"	3-1/2"
F-490	SURFACE	1-7/16"	3-1/2"

STRIKE	INSTALLED WITH	"B"	MIN. STILE
565	2923 MULLION	1-7/8"	3-3/8"
565	4023 MULLION	2-1/8"	3-5/8"
570	2923 MULLION	2-3/16"	3-3/4"
570	4023 MULLION	2-7/16"	4"
579	2923 MULLION	1-9/16"	3-1/4"
579	4023 MULLION	1-13/16"	3-1/2"
490	2923 MULLION	2-3/16"	3-3/4"
490	4023 MULLION	2-7/16"	4"
4396	4423 MULLION	1-1/8"	2-5/8"
571	17 VERTICAL	2-3/16"	3-3/4"
571-A	17 VERTICAL	1-11/16"	3-1/4"

NOTE: THE 571 & 571-A STRIKES ARE NOT APPROVED FOR FIRE RATED APPLICATIONS

**DO NOT SCALE**

**FALCON**

Customer Service

1-877-671-7011 www.allegion.com/us

TITLE: (F)17-R-K, (F)17-R-L, (F)17-R-T,  
(F)17-R-SE RIM DEVICES WITH FSA OR FSE  
ELECTRIC LOCKING FEATURE  
WOOD DOOR



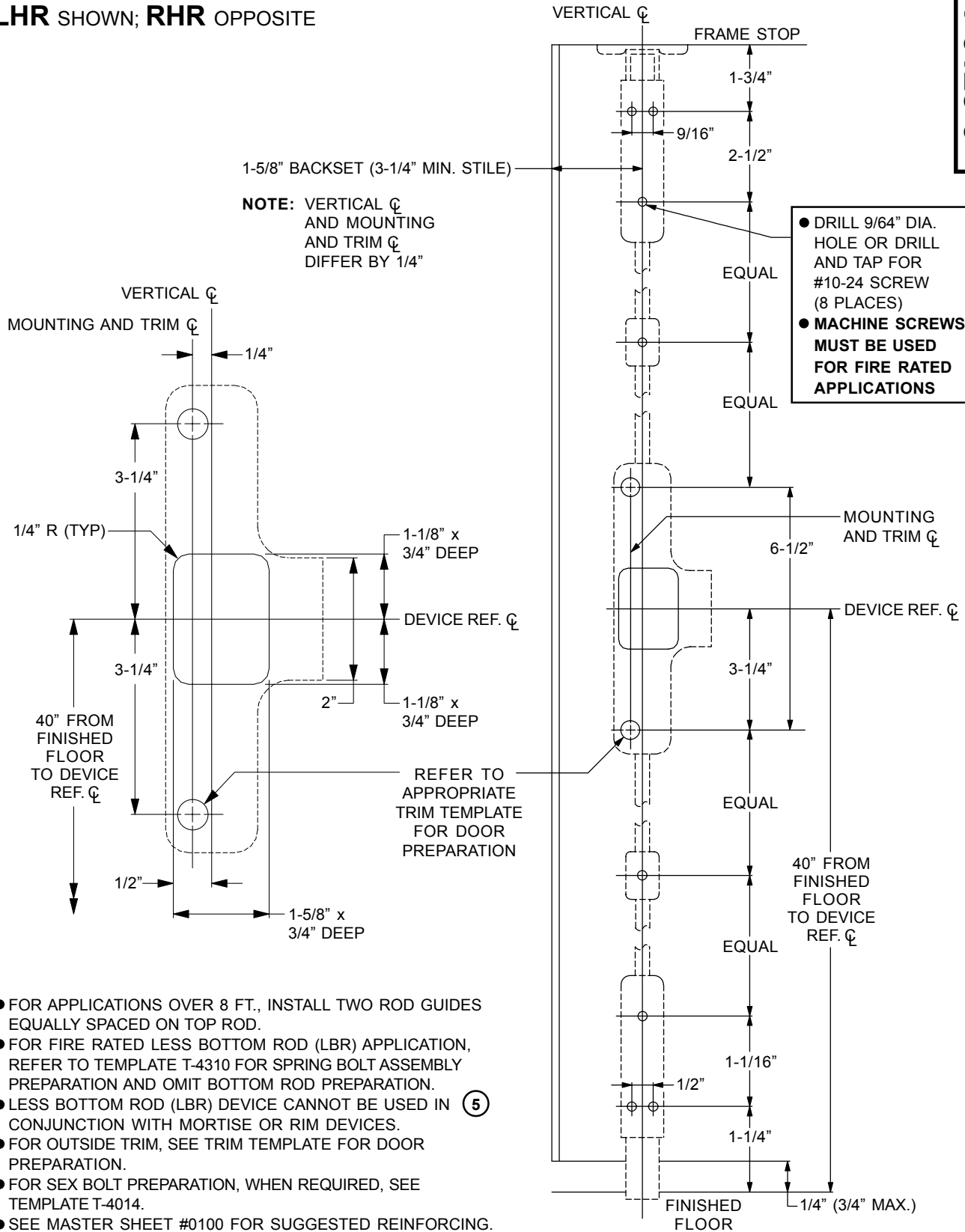
DATE: 1-15-2000

TEMPLATE NUMBER - REV.

**W-5120-1**

LHR SHOWN; RHR OPPOSITE

T-5128-5



- FOR APPLICATIONS OVER 8 FT., INSTALL TWO ROD GUIDES EQUALLY SPACED ON TOP ROD.
- FOR FIRE RATED LESS BOTTOM ROD (LBR) APPLICATION, REFER TO TEMPLATE T-4310 FOR SPRING BOLT ASSEMBLY PREPARATION AND OMIT BOTTOM ROD PREPARATION.
- LESS BOTTOM ROD (LBR) DEVICE CANNOT BE USED IN CONJUNCTION WITH MORTISE OR RIM DEVICES. (5)
- FOR OUTSIDE TRIM, SEE TRIM TEMPLATE FOR DOOR PREPARATION.
- FOR SEX BOLT PREPARATION, WHEN REQUIRED, SEE TEMPLATE T-4014.
- SEE MASTER SHEET #0100 FOR SUGGESTED REINFORCING.

**DO NOT SCALE**

**FALCON**

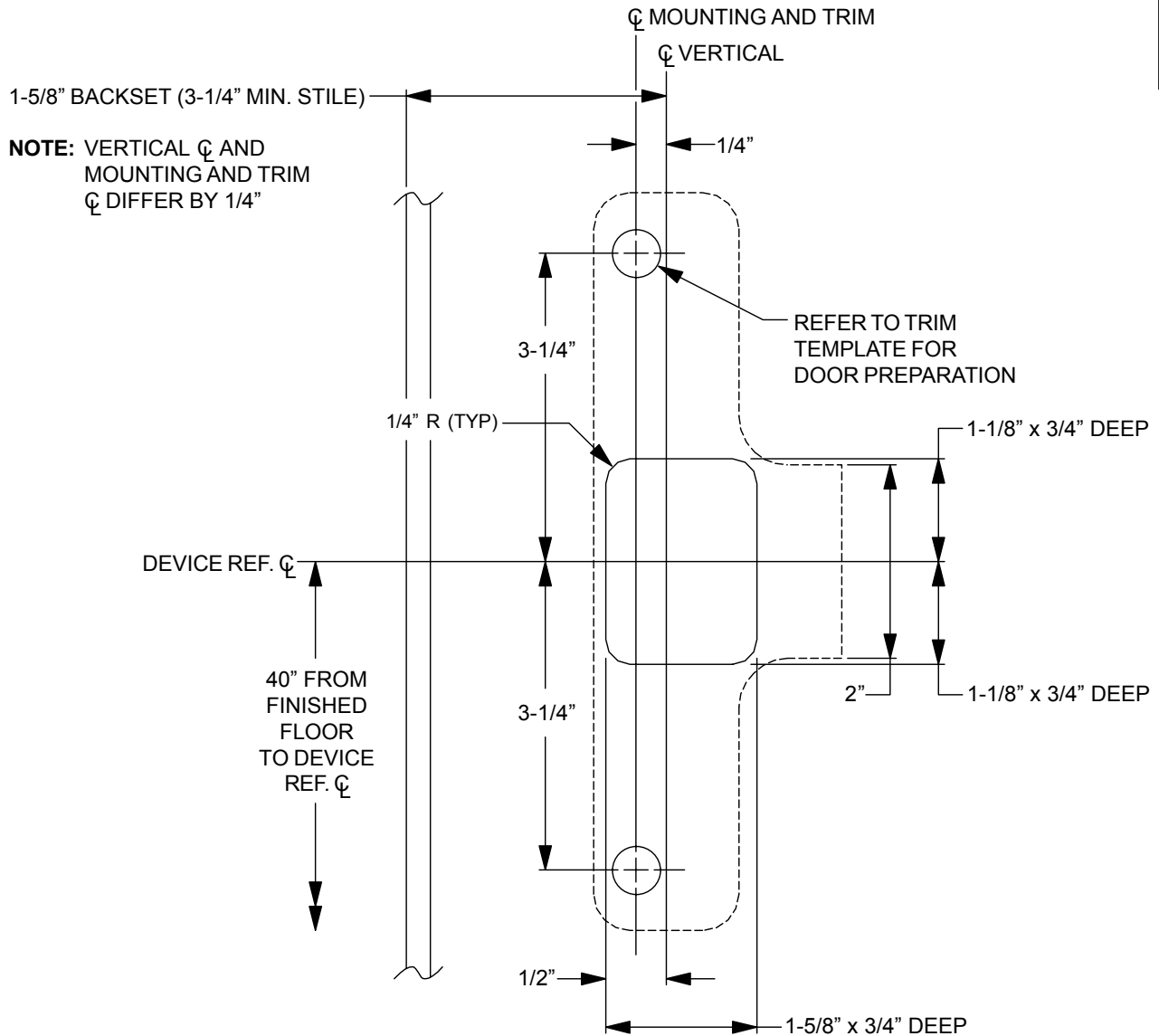
Customer Service  
1-877-671-7011 www.allegion.com/us

TITLE: (F-)17-V-K, (F-)17-V-L,  
(F-)17-V-T, (F-)17-V-SE  
SURFACE VERTICAL ROD DEVICES WITH  
FSA OR FSE ELECTRIC LOCKING FEATURE

DATE: 08-01-2002  
TEMPLATE NUMBER - REV.  
**T-5128-5**



**LHR** SHOWN  
**RHR** OPPOSITE



- FOR LESS BOTTOM ROD (LBR) APPLICATION (20 MINUTE RATING), REFER TO TEMPLATE W-4310 FOR SPRING BOLT ASSEMBLY PREPARATION AND OMIT BOTTOM ROD PREPARATION.
- LESS BOTTOM ROD (LBR) DEVICE CANNOT BE USED IN CONJUNCTION WITH MORTISE OR RIM DEVICES. ②
- PREPARE TOP AND BOTTOM LATCHES/BOLTS AT TIME OF DEVICE INSTALLATION.

**DO NOT SCALE**

**FALCON**<sup>®</sup>

Customer Service  
 1-877-671-7011 www.allegion.com/us

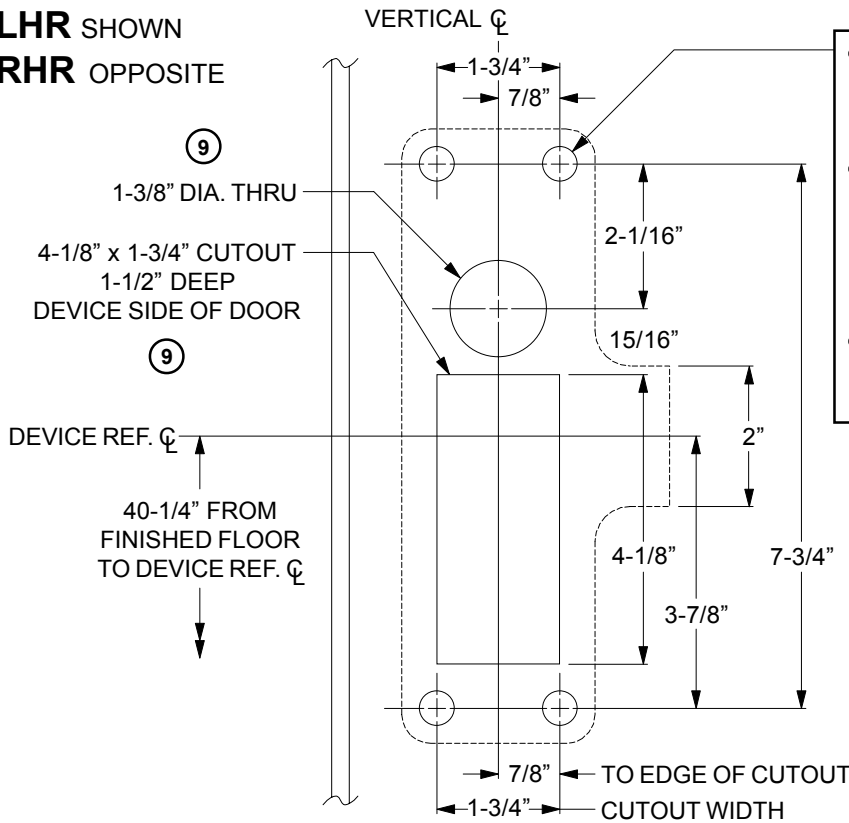
TITLE: (F-)17-V-K, (F-)17-V-L, (F-)17-V-T,  
 (F-)17-V-SE SURFACE VERTICAL  
 ROD DEVICES WITH FSA OR FSE  
 ELECTRIC LOCKING FEATURE  
 WOOD DOOR

DATE: 08-01-2002

TEMPLATE NUMBER - REV.

**W-5128-2**

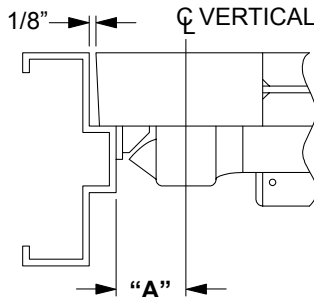
**LHR SHOWN  
RHR OPPOSITE**



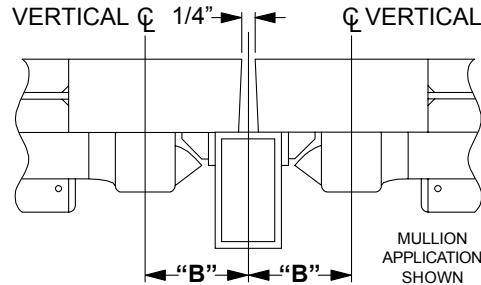
- FOR DEVICE WITH THRU-BOLTING TRIM, REFER TO TRIM TEMPLATE FOR DOOR PREPARATION
- FOR DEVICE WITH NON-THRU-BOLTING TRIM, DRILL 9/64\" DIA. HOLE, OR DRILL AND TAP FOR #10-24 SCREW, OR REFER TO TEMPLATE T-4014 FOR SEX BOLTS (4 PLACES)
- **MACHINE SCREWS MUST BE USED FOR FIRE RATED APPLICATIONS**

**EFFECTIVE FOR PRODUCT SHIPPED AFTER**  
**09/01/2002**  
**PRIOR TO THIS DATE USE EXISTING TEMPLATES**

**SINGLE DOOR APPLICATION**



**DOUBLE DOOR APPLICATION**



STRIKE	INSTALLED	"A"	MIN. STILE
565	SURFACE	2"	4-3/8"
565	FLUSH	1-1/2"	3-7/8"
570	SURFACE	2-1/4"	4-5/8"
579	SURFACE	1-5/8"	4"
490	SURFACE	2-1/4"	4-5/8"
F-570	SURFACE	2-1/4"	4-5/8"
F-490	SURFACE	2-1/4"	4-5/8"

STRIKE	INSTALLED WITH	"B"	MIN. STILE
565	2923 MULLION	2-3/4"	4-1/2"
565	4023 MULLION	3"	4-3/4"
570	2923 MULLION	3"	4-3/4"
570	4023 MULLION	3-1/4"	5"
579	2923 MULLION	2-3/8"	4-1/8"
579	4023 MULLION	2-5/8"	4-3/8"
490	2923 MULLION	3"	4-3/4"
490	4023 MULLION	3-1/4"	5"
F-570	F-4023 MULLION	3-1/4"	5"
F-490	F-4023 MULLION	3-1/4"	5"
571	18/XX VERTICAL	2-7/8"	4-5/8"
571-A	18/XX VERTICAL	2-3/8"	4-1/8"

- FOR OUTSIDE TRIM PREPARATION, SEE TRIM TEMPLATE FOR DOOR PREPARATION.
- FOR SEX BOLT PREPARATION, WHEN REQUIRED, SEE TEMPLATE T-4014.
- SEE MASTER SHEET #0100 FOR SUGGESTED REINFORCING.

**NOTE: 571 AND 571-A STRIKES ARE NOT APPROVED FOR FIRE RATED APPLICATIONS.**

**DO NOT SCALE**

**FALCON**

Customer Service  
1-877-671-7011 www.allegion.com/us

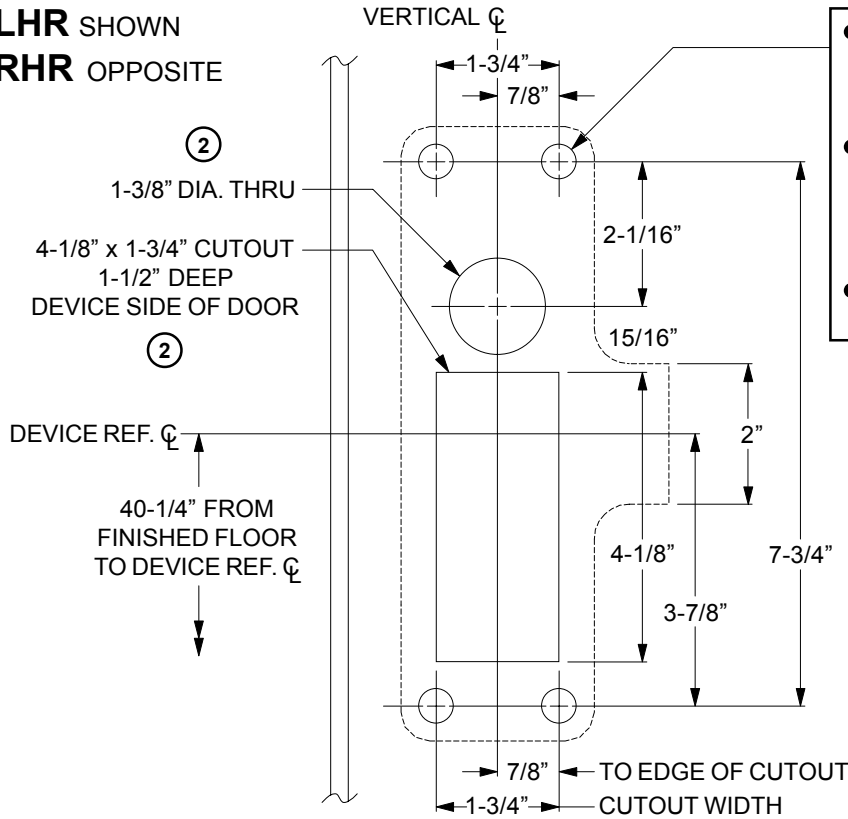
TITLE: (F-)18-R-KE, (F-)18-R-LE,  
(F-)18-R-T, (F-)18-R-SE  
RIM DEVICES WITH FSA OR FSE  
ELECTRIC LOCKING FEATURE

DATE: 08-01-2002

TEMPLATE NUMBER - REV.

**T-5208-9**

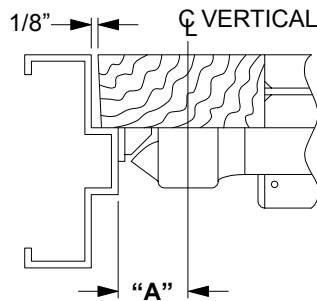
**LHR SHOWN**  
**RHR OPPOSITE**



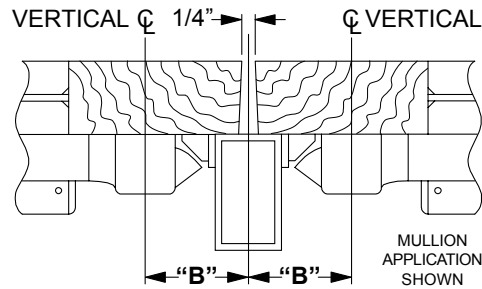
- FOR DEVICE WITH THRU-BOLTING TRIM, REFER TO TRIM TEMPLATE FOR DOOR PREPARATION
- FOR DEVICE WITH NON-THRU-BOLTING TRIM, DRILL 9/64" DIA. HOLE x 1-1/4" DEEP OR REFER TO TEMPLATE W-4014 FOR SEX BOLTS (4 PLACES)
- **SEX BOLTS MUST BE USED FOR FIRE RATED APPLICATIONS**

**EFFECTIVE FOR PRODUCT SHIPPED AFTER**  
**09/01/2002**  
**PRIOR TO THIS DATE USE EXISTING TEMPLATES**

**SINGLE DOOR APPLICATION**



**DOUBLE DOOR APPLICATION**



STRIKE	INSTALLED	"A"	MIN. STILE
565	SURFACE	2"	4-3/8"
565	FLUSH	1-1/2"	3-7/8"
570	SURFACE	2-1/4"	4-5/8"
579	SURFACE	1-5/8"	4"
490	SURFACE	2-1/4"	4-5/8"
F-570	SURFACE	2-1/4"	4-5/8"
F-490	SURFACE	2-1/4"	4-5/8"

STRIKE	INSTALLED WITH	"B"	MIN. STILE
565	2923 MULLION	2-3/4"	4-1/2"
565	4023 MULLION	3"	4-3/4"
570	2923 MULLION	3"	4-3/4"
570	4023 MULLION	3-1/4"	5"
579	2923 MULLION	2-3/8"	4-1/8"
579	4023 MULLION	2-5/8"	4-3/8"
490	2923 MULLION	3"	4-3/4"
490	4023 MULLION	3-1/4"	5"
F-570	F-4023 MULLION	3-1/4"	5"
F-490	F-4023 MULLION	3-1/4"	5"
571	18/XX VERTICAL	2-7/8"	4-5/8"
571-A	18/XX VERTICAL	2-3/8"	4-1/8"

- FOR OUTSIDE TRIM PREPARATION, SEE TRIM TEMPLATE FOR DOOR PREPARATION.
- FOR SEX BOLT PREPARATION, WHEN REQUIRED, SEE TEMPLATE W-4014.

**NOTE:** 571 AND 571-A STRIKES ARE NOT APPROVED FOR FIRE RATED APPLICATIONS.

**DO NOT SCALE**

**FALCON**

Customer Service  
1-877-671-7011 www.allegion.com/us

TITLE: (F-)18-R-KE, (F-)18-R-LE,  
(F-)18-R-T, (F-)18-R-SE RIM DEVICES  
WITH FSA OR FSE  
ELECTRIC LOCKING FEATURE  
WOOD DOOR

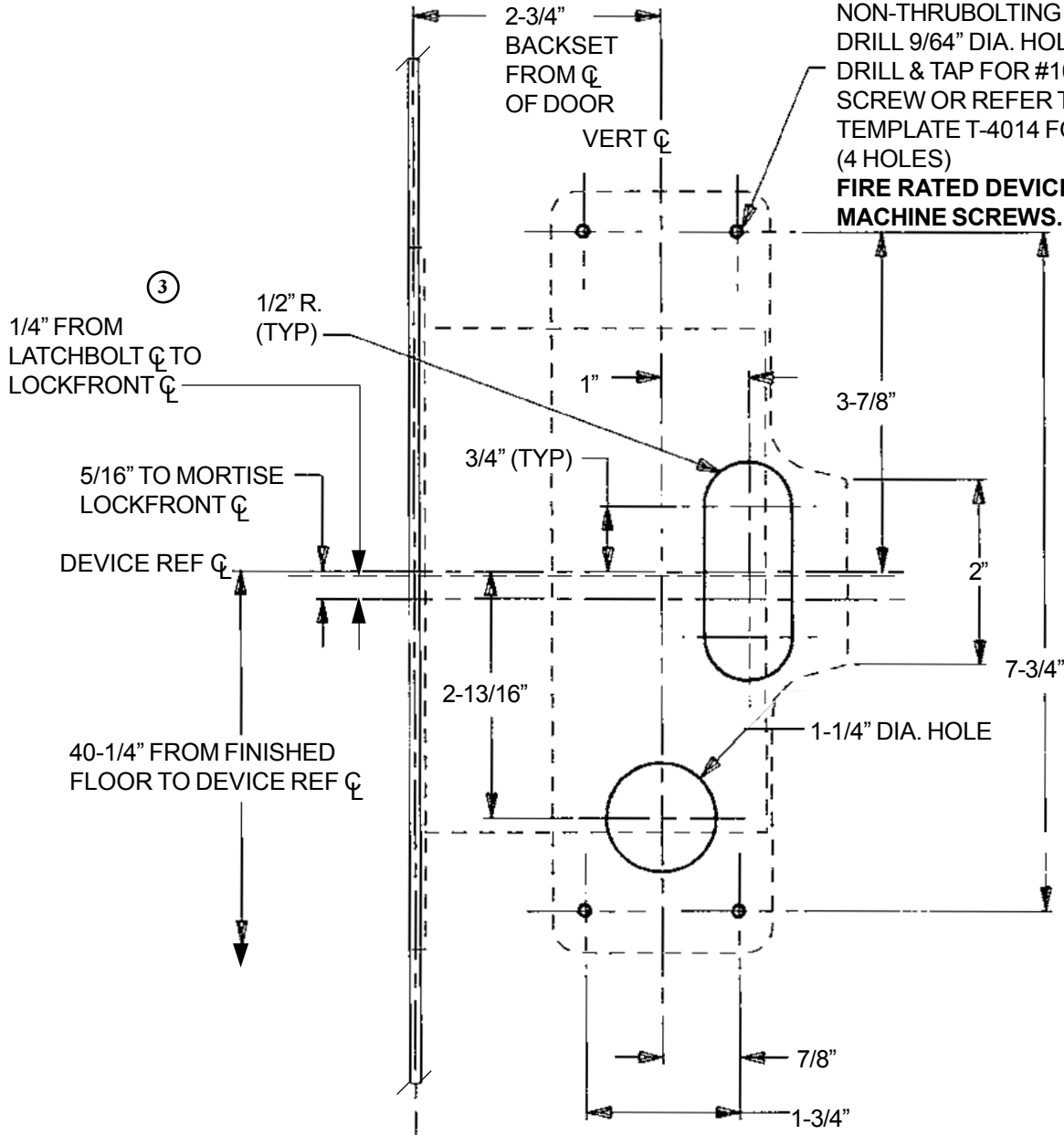
DATE: 08-01-2002

TEMPLATE NUMBER - REV.

**W-5208-2**

LHR SHOWN  
RHR OPPOSITE

- FOR DEVICE WITH THURBOLTING TRIM, REFER TO TRIM TEMPLATE FOR DOOR PREPARATION
  - FOR DEVICE WITH NON-THURBOLTING TRIM: DRILL 9/64" DIA. HOLE OR DRILL & TAP FOR #10-24 SCREW OR REFER TO TEMPLATE T-4014 FOR SEXBOLTS (4 HOLES)
- FIRE RATED DEVICES MUST USE MACHINE SCREWS.**



- SEE TEMPLATE T-4012 FOR MORTISE LOCK PREPARATION
- FOR DOORS WITH EXISTING MORTISE LOCK PREPARATION, THE DEVICE REF CL IS 5/16" ABOVE THE LOCKFRONT CL
- SEE MASTER SHEET #0100 FOR SUGGESTED REINFORCING
- FOR SEXBOLT PREPARATION, WHEN REQUIRED, REFER TO TEMPLATE T-4014
- FOR OUTSIDE TRIM PREPARATION, SEE ADDITIONAL TRIM TEMPLATE FOR DOOR PREPARATION

**DO NOT SCALE**

**FALCON**

Customer Service  
1-877-671-7011 www.allegion.com/us

TITLE: (F)18-M-KE, (F)18-M-LE,  
(F)18-M-T, (F)18-M-SE MORTISE DEVICES  
WITH FSA OR FSE ELECTRIC LOCKING  
FEATURE

DATE: 1-1-2001

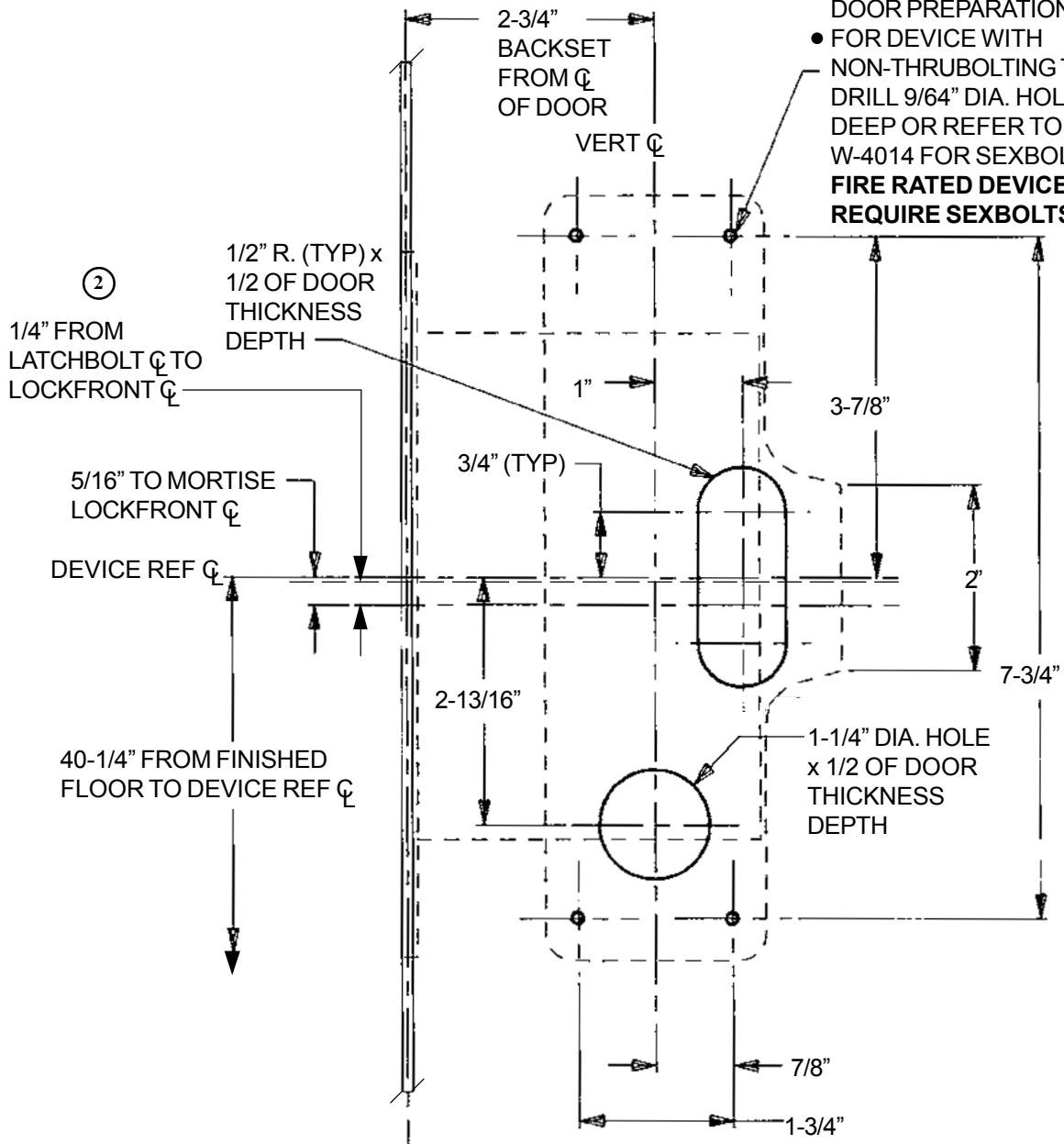
TEMPLATE NUMBER - REV.

**T-5210-3**

**LHR** SHOWN  
**RHR** OPPOSITE

**W-5210-2**

- FOR DEVICE WITH THURBOLTING TRIM, REFER TO TRIM TEMPLATE FOR DOOR PREPARATION
  - FOR DEVICE WITH NON-THURBOLTING TRIM: DRILL 9/64" DIA. HOLE x 1-1/4" DEEP OR REFER TO TEMPLATE W-4014 FOR SEXBOLTS (4 HOLES)
- FIRE RATED DEVICES REQUIRE SEXBOLTS**



- SEE TEMPLATE W-4012 FOR MORTISE LOCK PREPARATION
- FOR DOORS WITH EXISTING MORTISE LOCK PREPARATION, THE DEVICE REF  $\varnothing$  IS 5/16" ABOVE THE LOCKFRONT  $\varnothing$
- FOR OUTSIDE TRIM PREPARATION, SEE ADDITIONAL TRIM TEMPLATE FOR DOOR PREPARATION

**DO NOT SCALE**

**FALCON**<sup>®</sup>

Customer Service  
 1-877-671-7011 www.allegion.com/us

TITLE: (F)18-M-KE, (F)18-M-LE,  
 (F)18-M-T, (F)18-M-SE  
**MORTISE DEVICES WITH FSA OR FSE  
 ELECTRIC LOCKING FEATURE  
 WOOD DOOR**

DATE: 1-1-2001  
 TEMPLATE NUMBER - REV.  
**W-5210-2**

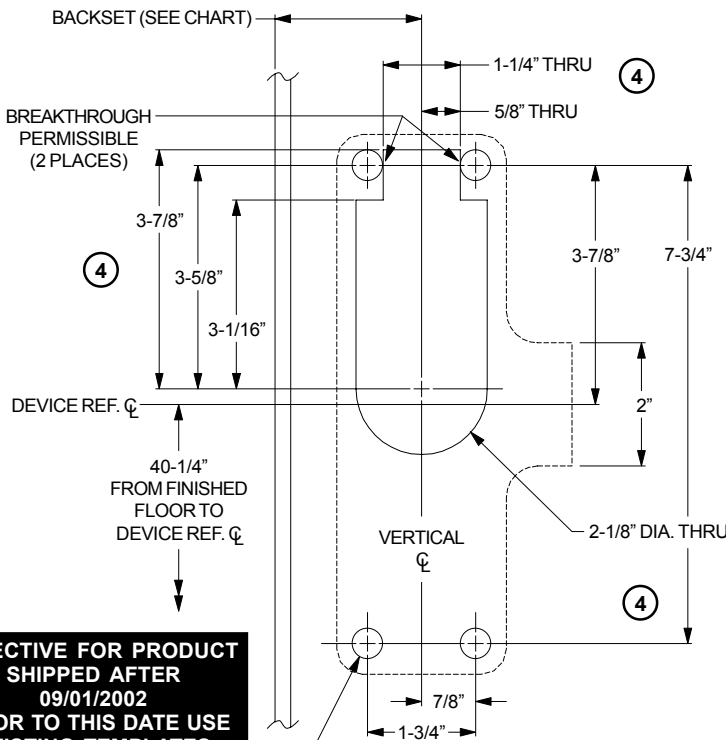
**LHR SHOWN; RHR OPPOSITE**

**T-5216-4**

INSTALLATION	BACKSET	
	3-1/2" MIN. STILE	FLUSH DOOR
TWO VERTICAL ROD DEVICES	1/2 OF STILE	2-3/4"
VERTICAL ROD x MORTISE DEVICE	2-3/4"	2-3/4"
VERTICAL ROD x RIM DEVICE (USING 571 STRIKE)	2-3/4"	2-3/4"
VERTICAL ROD x RIM DEVICE (USING 571-A STRIKE)	2-1/4"	2-1/4"

**NOTE:** 571 AND 571-A STRIKES ARE NOT APPROVED FOR FIRE RATED APPLICATIONS.

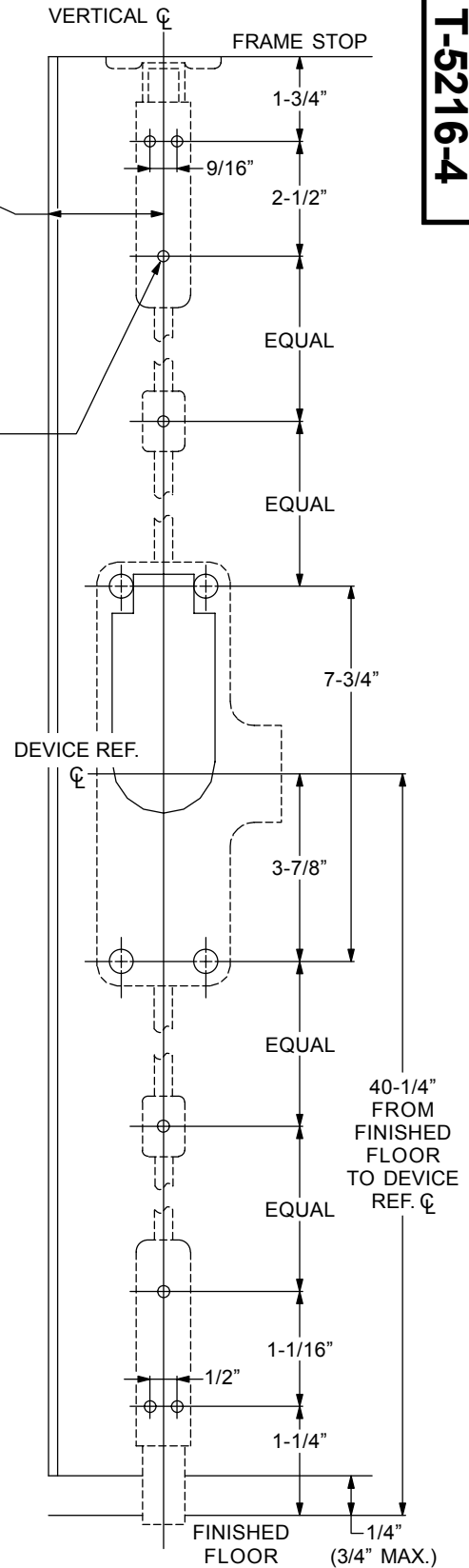
- DRILL 9/64" DIA. HOLE OR DRILL AND TAP FOR #10-24 SCREW (8 PLACES)
- MACHINE SCREWS MUST BE USED FOR FIRE RATED APPLICATIONS



**EFFECTIVE FOR PRODUCT SHIPPED AFTER 09/01/2002 PRIOR TO THIS DATE USE EXISTING TEMPLATES**

- FOR THRU-BOLTING TRIM, SEE TRIM TEMPLATE FOR DOOR PREPARATION
- FOR NON-THRU-BOLTING TRIM, DRILL 9/64" DIA. HOLE OR DRILL AND TAP FOR #10-24 SCREW (4 PLACES)
- MACHINE SCREWS MUST BE USED FOR FIRE RATED APPLICATIONS

- FOR APPLICATIONS OVER 8 FT., INSTALL TWO ROD GUIDES EQUALLY SPACED ON TOP ROD.
- FOR FIRE RATED LESS BOTTOM ROD (LBR) APPLICATION, REFER TO TEMPLATE T-4310 FOR SPRING BOLT ASSEMBLY PREPARATION AND OMIT BOTTOM ROD PREPARATION.
- LESS BOTTOM ROD (LBR) DEVICE CANNOT BE USED IN CONJUNCTION WITH MORTISE OR RIM DEVICES.
- FOR OUTSIDE TRIM, SEE TRIM TEMPLATE FOR DOOR PREPARATION.
- FOR SEX BOLT PREPARATION, WHEN REQUIRED, SEE TEMPLATE T-4014.
- SEE MASTER SHEET #0100 FOR SUGGESTED REINFORCING.



**DO NOT SCALE**

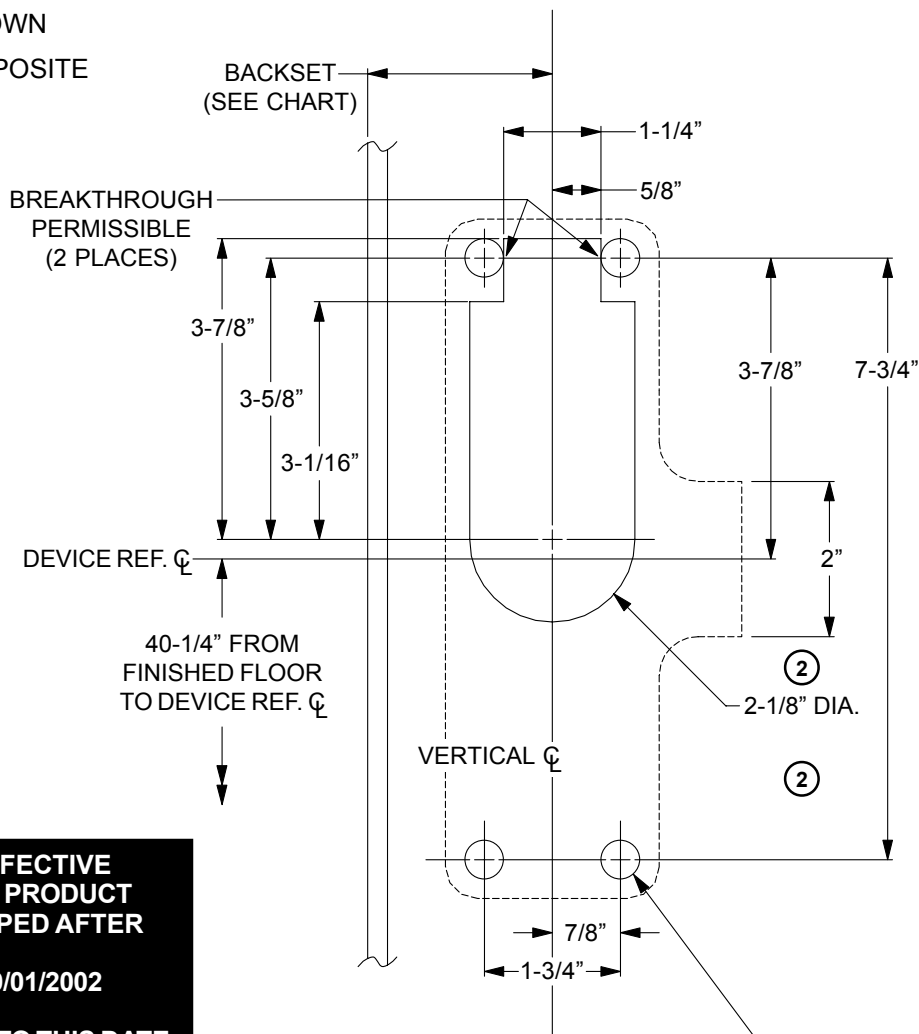
**FALCON**

Customer Service  
1-877-671-7011 www.allegion.com/us

TITLE: (F-)18-V-KE, (F-)18-V-LE,  
(F-)18-V-T, (F-)18-V-SE  
SURFACE VERTICAL ROD DEVICES WITH  
FSA OR FSE ELECTRIC LOCKING FEATURE

DATE: 08-01-2002  
TEMPLATE NUMBER - REV.  
**T-5216-4**

**LHR** SHOWN  
**RHR** OPPOSITE



**EFFECTIVE FOR PRODUCT SHIPPED AFTER 09/01/2002 PRIOR TO THIS DATE USE EXISTING TEMPLATES**

INSTALLATION	BACKSET	
	3-1/2" MIN. STILE	FLUSH DOOR
TWO VERTICAL ROD DEVICE	1/2 OF STILE	2-3/4"
VERTICAL ROD x MORTISE DEVICE	2-3/4"	2-3/4"
VERTICAL ROD x RIM DEVICE (USING 571 STRIKE)	2-3/4"	2-3/4"
VERTICAL ROD x RIM DEVICE (USING 571-A STRIKE)	2-1/4"	2-1/4"

**NOTE:** 571 AND 571-A STRIKES ARE NOT APPROVED FOR FIRE RATED APPLICATIONS.

- FOR DEVICE WITH THRU-BOLTING TRIM, REFER TO TRIM TEMPLATE FOR DOOR PREPARATION
- FOR DEVICE WITH NON-THRU-BOLTING TRIM, DRILL 9/64" DIA. HOLE x 1-1/4" DEEP OR REFER TO TEMPLATE W-4014 FOR SEX BOLTS (4 PLACES)
- **SEX BOLTS MUST BE USED FOR FIRE RATED APPLICATIONS**

- FOR LESS BOTTOM ROD (LBR) APPLICATION (20 MINUTE RATING), REFER TO TEMPLATE W-4310 FOR SPRING BOLT ASSEMBLY PREPARATION AND OMIT BOTTOM ROD PREPARATION.
- LESS BOTTOM ROD (LBR) DEVICE CANNOT BE USED IN CONJUNCTION WITH MORTISE OR RIM DEVICES. ②
- FOR OUTSIDE TRIM PREPARATION, SEE TRIM TEMPLATE FOR DOOR PREPARATION.
- PREPARE TOP AND BOTTOM LATCHES/BOLTS AT TIME OF DEVICE INSTALLATION.
- FOR SEX BOLT PREPARATION, WHEN REQUIRED, SEE TEMPLATE W-4014.

**DO NOT SCALE**

**FALCON**®

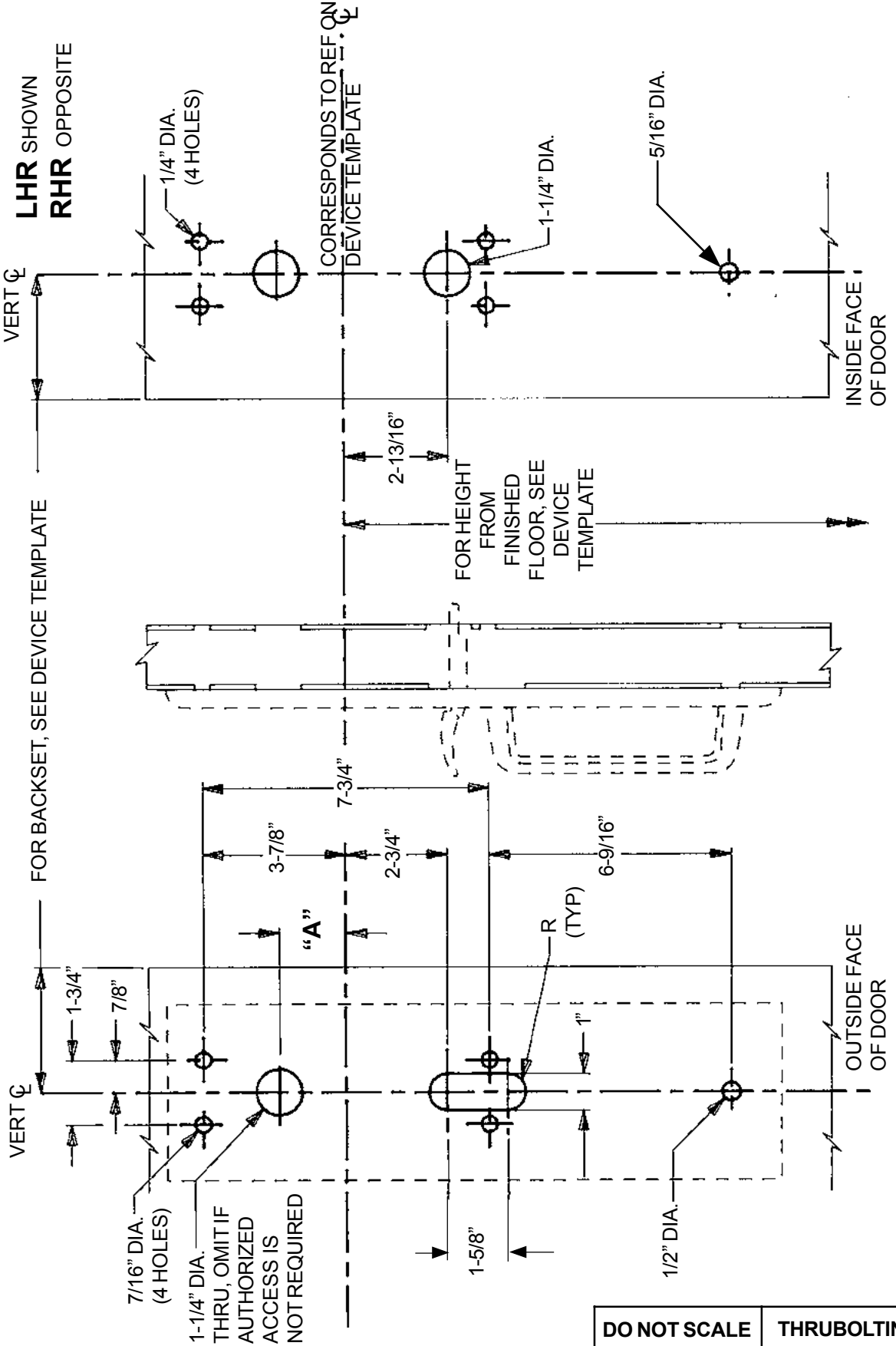
Customer Service  
1-877-671-7011 www.allegion.com/us

TITLE: (F-)18-V-KE, (F-)18-V-LE, (F-)18-V-T, (F-)18-V-SE SURFACE VERTICAL ROD DEVICES WITH FSA OR FSE ELECTRIC LOCKING FEATURE WOOD DOOR

DATE: 08-01-2002

TEMPLATE NUMBER - REV.

**W-5216-2**



③

DEVICE	"A"	DEVICE	"A"
(F)XX-R-T x FSA OR FSE	1-13/16"	(F)18-R-T x FSA OR FSE	1-13/16"
(F)XX-V-T x FSA OR FSE	1-13/16"	(F)18-M-T x FSA OR FSE	1-13/16"
(F)XX-M-T x FSA OR FSE	1-13/16"	(F)18-V-T x FSA OR FSE	1/4"

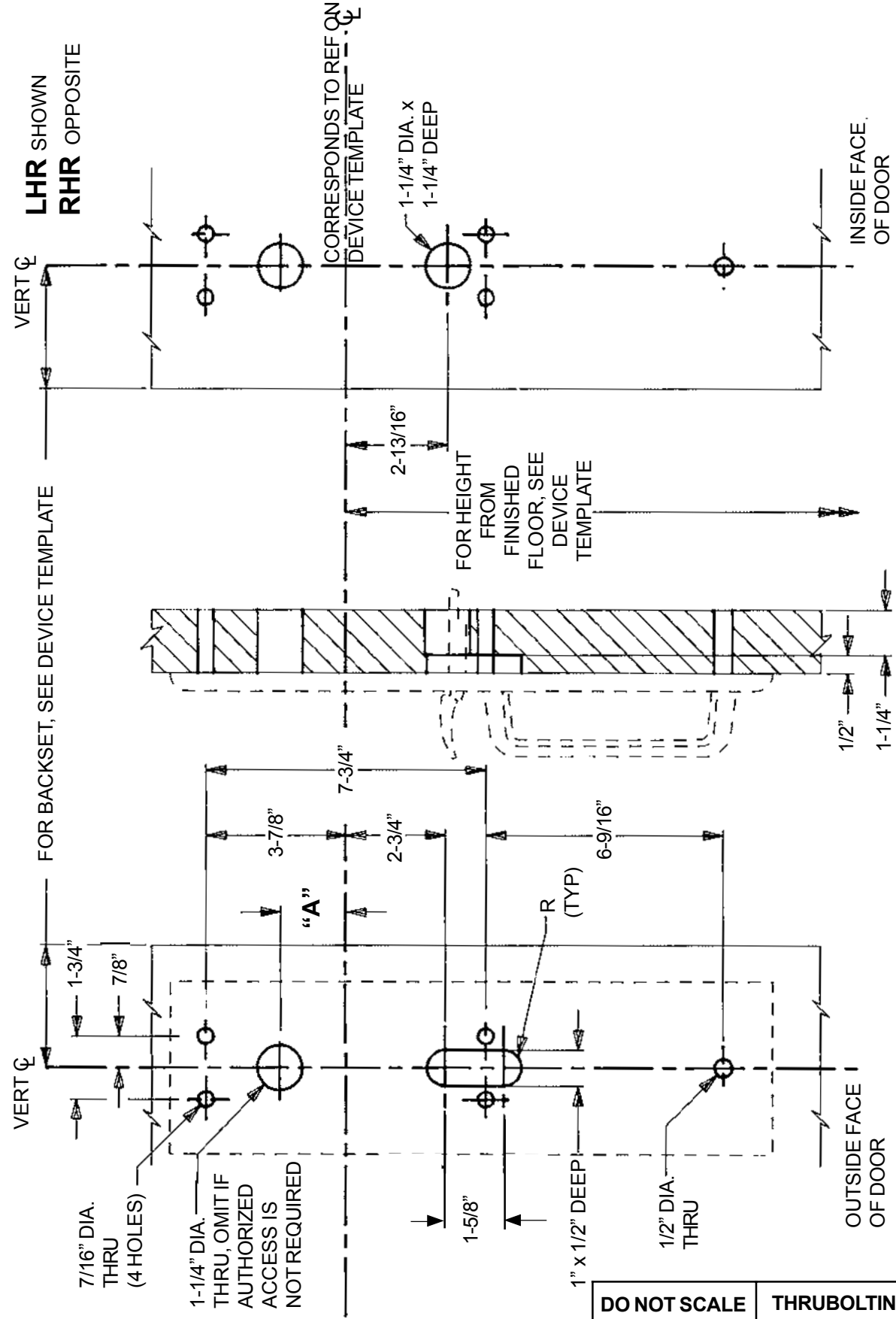
**DO NOT SCALE**      **THRUBOLTING TRIM**

**FALCON**  
Customer Service  
1-877-671-7011    www.allegion.com/us

TITLE: **VANGUARD TRIM - T FUNCTIONS  
FOR (F)18 & (F)XX SERIES DEVICES  
WITH FSA OR FSE ELECTRIC  
LOCKING FEATURE**

DATE: 1-15-2000  
TEMPLATE NUMBER - REV.  
**T-5321-3**





①

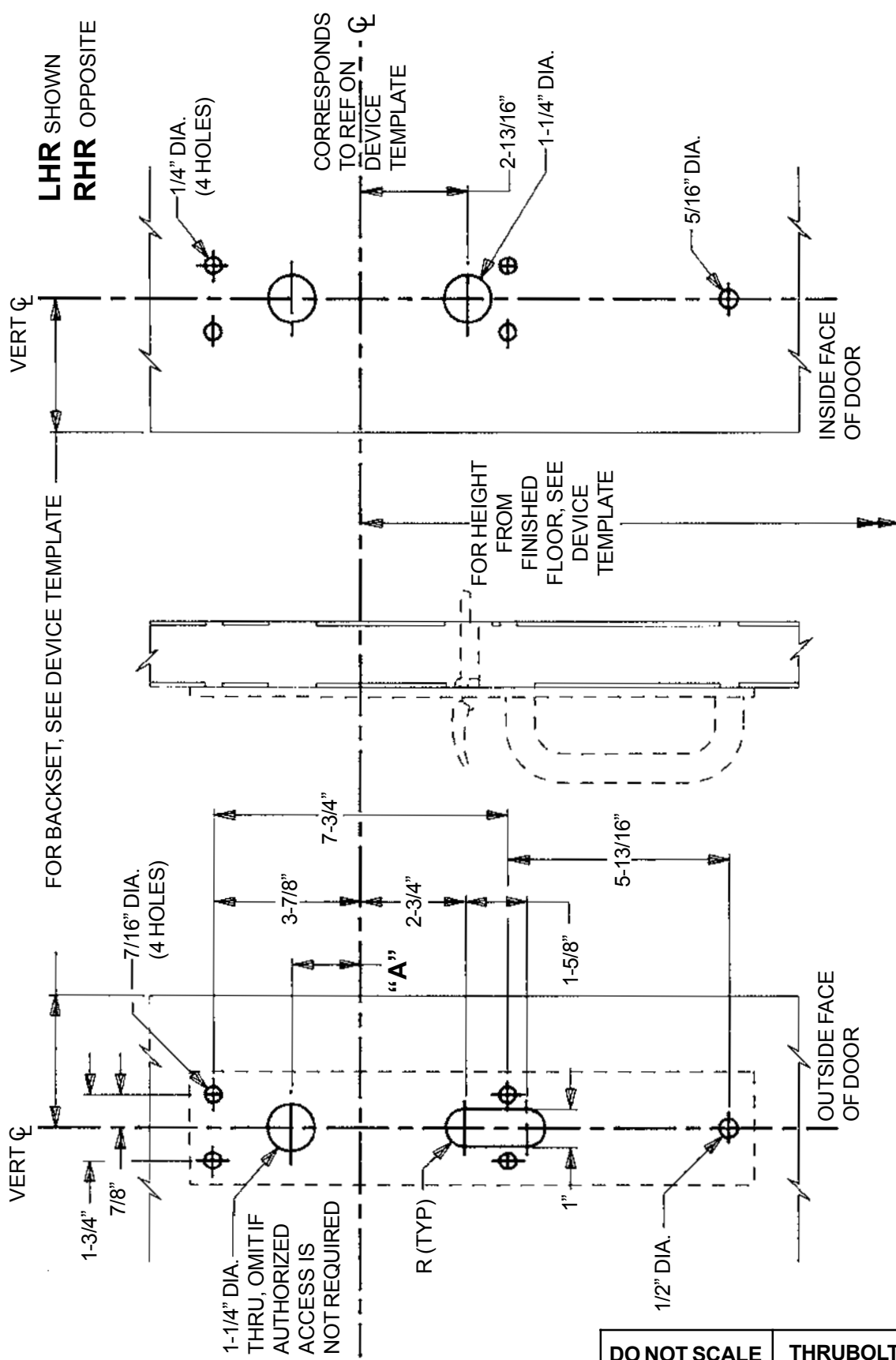
DEVICE	"A"	DEVICE	"A"
(F)XX-R-T x FSA OR FSE	1-13/16"	(F)18-R-T x FSA OR FSE	1-13/16"
(F)XX-V-T x FSA OR FSE	1-13/16"	(F)18-M-T x FSA OR FSE	1-13/16"
(F)XX-M-T x FSA OR FSE	1-13/16"	(F)18-V-T x FSA OR FSE	1/4"

**DO NOT SCALE**      **THRUBOLTING TRIM**

**FALCON**  
 Customer Service  
 1-877-671-7011    www.allegion.com/us

TITLE: VANGUARD TRIM - T FUNCTIONS  
 FOR (F)18 & (F)XX SERIES DEVICES  
 WITH FSA OR FSE ELECTRIC LOCKING FEATURE  
 WOOD DOOR

DATE: 1-15-2000  
 TEMPLATE NUMBER - REV.  
**W-5321-1**



DEVICE	"A"	DEVICE	"A"
(F)XX-R-T x FSA OR FSE	1-13/16"	(F)18-R-T x FSA OR FSE	1-13/16"
(F)XX-V-T x FSA OR FSE	1-13/16"	(F)18-M-T x FSA OR FSE	1-13/16"
(F)XX-M-T x FSA OR FSE	1-13/16"	(F)18-V-T x FSA OR FSE	1/4"

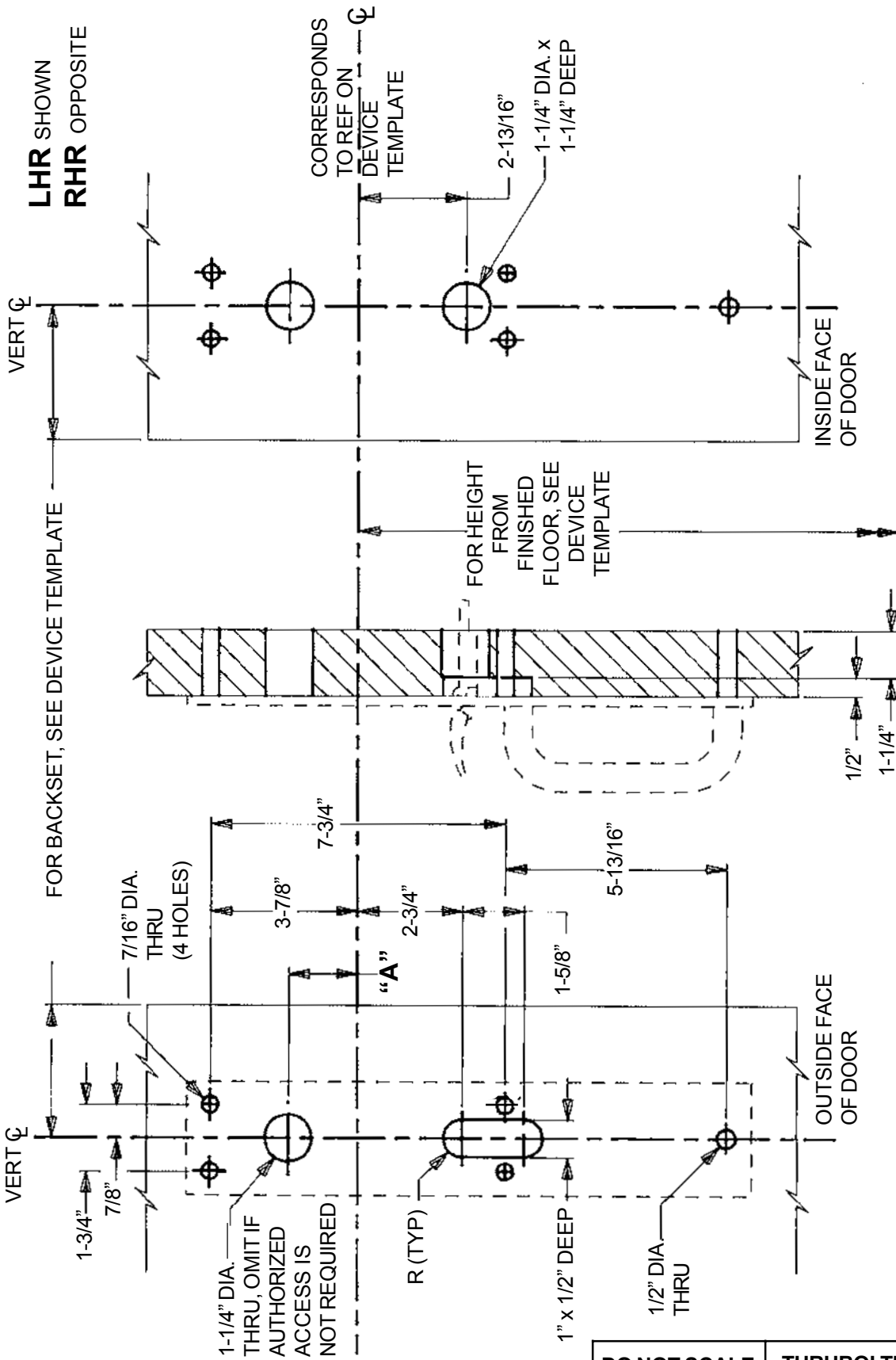
DO NOT SCALE THURBOLTING TRIM

**FALCON**

Customer Service  
1-877-671-7011 www.allegion.com/us

TITLE: APOLLO TRIM - T  
FUNCTIONS FOR (F)18 & (F)XX SERIES  
DEVICES WITH FSA OR FSE ELECTRIC  
LOCKING FEATURE

DATE: 1-15-2000  
TEMPLATE NUMBER - REV.  
**T-5351-2**



LHR SHOWN  
RHR OPPOSITE

CORRESPONDS  
TO REF ON  
DEVICE  
TEMPLATE

2-13/16"  
1-1/4" DIA. X  
1-1/4" DEEP

FOR BACKSET, SEE DEVICE TEMPLATE

FOR HEIGHT  
FROM  
FINISHED  
FLOOR, SEE  
DEVICE  
TEMPLATE

7/16" DIA.  
THRU  
(4 HOLES)

VERT  $\phi$

1-3/4"

7/8"

1-1/4" DIA.  
THRU, OMIT IF  
AUTHORIZED  
ACCESS IS  
NOT REQUIRED

"A"

3-7/8"

7-3/4"

2-3/4"

5-13/16"

R (TYP)

1-5/8"

1" x 1/2" DEEP

1/2" DIA.  
THRU

OUTSIDE FACE  
OF DOOR

1/2"

1-1/4"

INSIDE FACE  
OF DOOR

VERT  $\phi$

①

DEVICE	"A"	DEVICE	"A"
(F)XX-R-T x FSA OR FSE	1-13/16"	(F)18-R-T x FSA OR FSE	1-13/16"
(F)XX-V-T x FSA OR FSE	1-13/16"	(F)18-M-T x FSA OR FSE	1-13/16"
(F)XX-M-T x FSA OR FSE	1-13/16"	(F)18-V-T x FSA OR FSE	1/4"

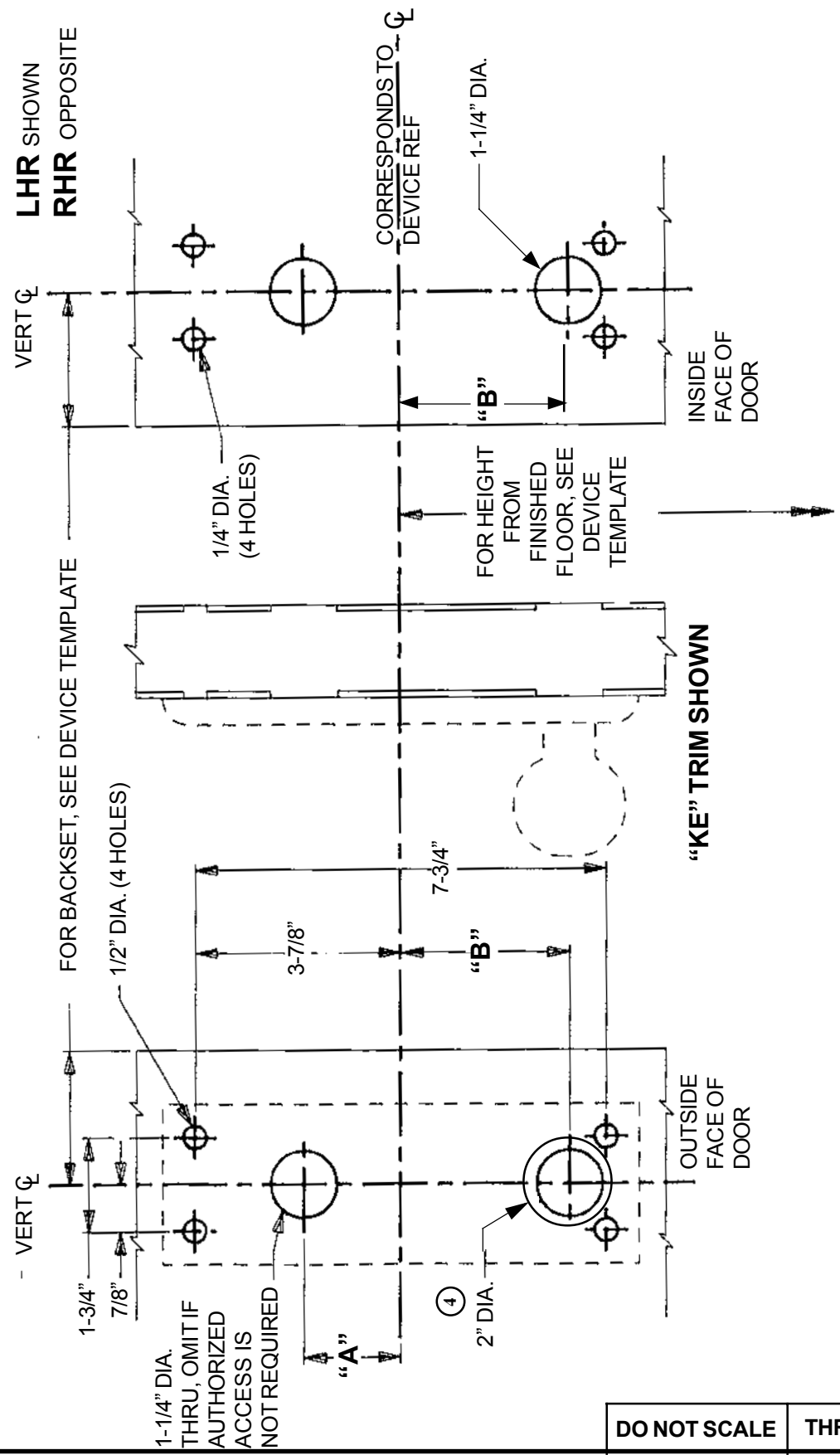
DO NOT SCALE THRUBOLTING TRIM

**FALCON**  
Customer Service  
1-877-671-7011 www.allegion.com/us

TITLE: APOLLO TRIM- T FUNCTIONS  
FOR (F)18 & (F)XX SERIES DEVICES  
WITH FSA OR FSE ELECTRIC LOCKING FEATURE  
WOOD DOOR

DATE: 1-15-2000  
TEMPLATE NUMBER - REV.  
**W-5351-1**

**W-5351-1**



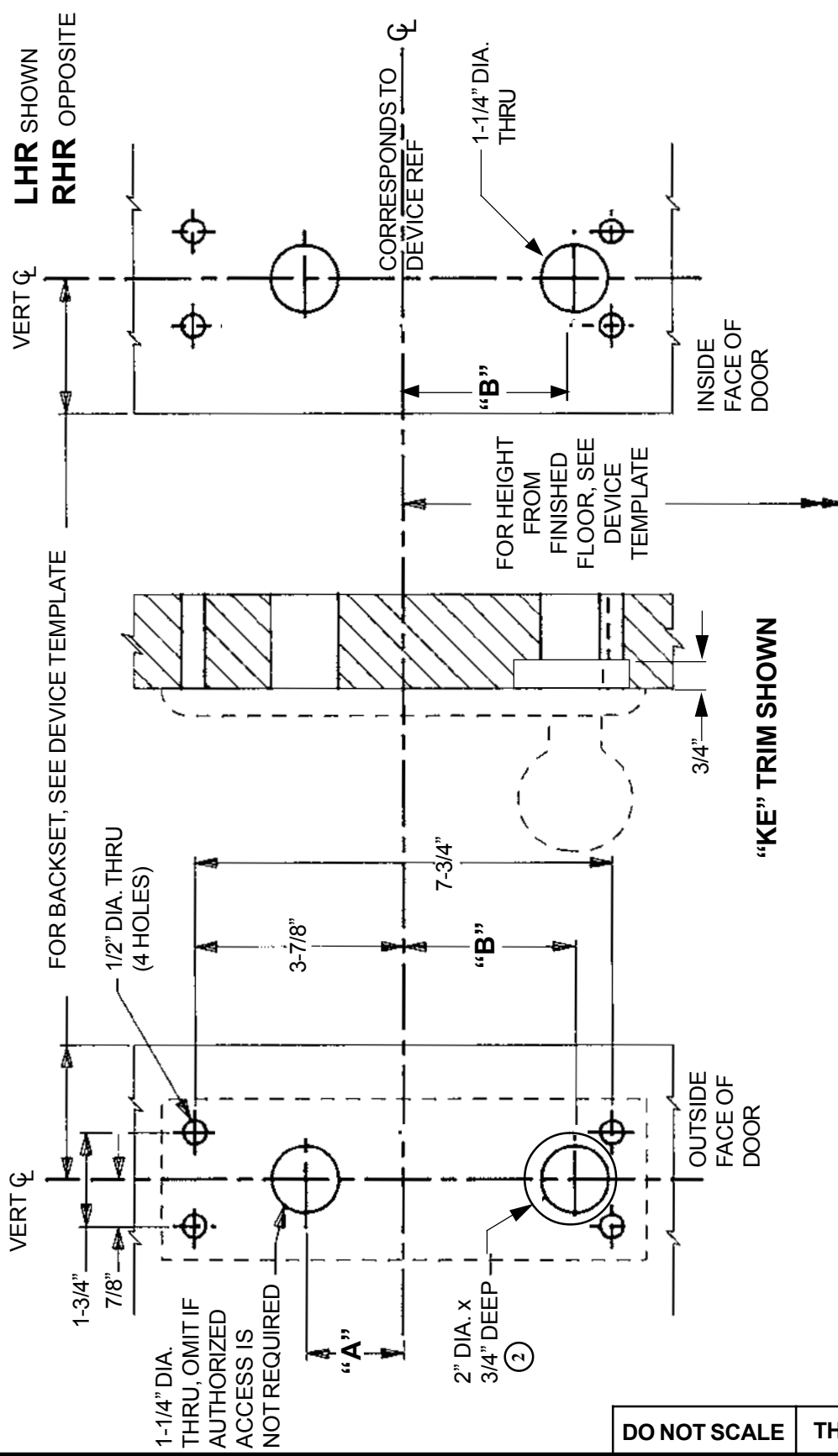
DEVICE	"A"	"B"	DEVICE	"A"	"B"	DEVICE	"A"	"B"
(F)XX-R-KE x FSA OR FSE	1-13/16"	3-3/16"	(F)XX-R-LE x FSA OR FSE	1-13/16"	3-3/16"	(F)XX-R-SE x FSA OR FSE	1-13/16"	3-3/16"
(F)XX-V-KE x FSA OR FSE	1-13/16"	1-1/4"	(F)XX-V-LE x FSA OR FSE	1-13/16"	1-1/4"	(F)XX-V-SE x FSA OR FSE	1-13/16"	1-1/4"
(F)XX-M-KE x FSA OR FSE	1-13/16"	1-1/4"	(F)XX-M-LE x FSA OR FSE	1-13/16"	1-1/4"	(F)XX-M-SE x FSA OR FSE	1-13/16"	1-1/4"
(F)18-R-KE x FSA OR FSE	1-13/16"	3-3/16"	(F)18-R-LE x FSA OR FSE	1-13/16"	3-3/16"	(F)18-R-SE x FSA OR FSE	1-13/16"	3-3/16"
(F)18-M-KE x FSA OR FSE	1-13/16"	1-1/4"	(F)18-M-LE x FSA OR FSE	1-13/16"	1-1/4"	(F)18-M-SE x FSA OR FSE	1-13/16"	1-1/4"
(F)18-V-KE x FSA OR FSE	1/4"	1-1/4"	(F)18-V-LE x FSA OR FSE	1/4"	1-1/4"	(F)18-V-SE x FSA OR FSE	1/4"	1-1/4"

DO NOT SCALE THURBOLTING TRIM

**FALCON**  
 Customer Service  
 1-877-671-7011 www.allegion.com/us

TITLE: "KE", "LE" AND "SE" TRIMS  
 FOR (F)18 & (F)XX SERIES DEVICES  
 WITH FSA OR FSE ELECTRIC  
 LOCKING FEATURE

DATE: 1-1-2001  
 TEMPLATE NUMBER - REV.  
**T-5365-4**



DEVICE	"A"	"B"	DEVICE	"A"	"B"	DEVICE	"A"	"B"
(F)XX-R-KE x FSA OR FSE	1-13/16"	3-3/16"	(F)XX-R-LE x FSA OR FSE	1-13/16"	3-3/16"	(F)XX-R-SE x FSA OR FSE	1-13/16"	3-3/16"
(F)XX-V-KE x FSA OR FSE	1-13/16"	1-1/4"	(F)XX-V-LE x FSA OR FSE	1-13/16"	1-1/4"	(F)XX-V-SE x FSA OR FSE	1-13/16"	1-1/4"
(F)XX-M-KE x FSA OR FSE	1-13/16"	1-1/4"	(F)XX-M-LE x FSA OR FSE	1-13/16"	1-1/4"	(F)XX-M-SE x FSA OR FSE	1-13/16"	1-1/4"
(F)18-R-KE x FSA OR FSE	1-13/16"	3-3/16"	(F)18-R-LE x FSA OR FSE	1-13/16"	3-3/16"	(F)18-R-SE x FSA OR FSE	1-13/16"	3-3/16"
(F)18-M-KE x FSA OR FSE	1-13/16"	1-1/4"	(F)18-M-LE x FSA OR FSE	1-13/16"	1-1/4"	(F)18-M-SE x FSA OR FSE	1-13/16"	1-1/4"
(F)18-V-KE x FSA OR FSE	1/4"	1-1/4"	(F)18-V-LE x FSA OR FSE	1/4"	1-1/4"	(F)18-V-SE x FSA OR FSE	1/4"	1-1/4"

DO NOT SCALE      THRUBOLTING TRIM

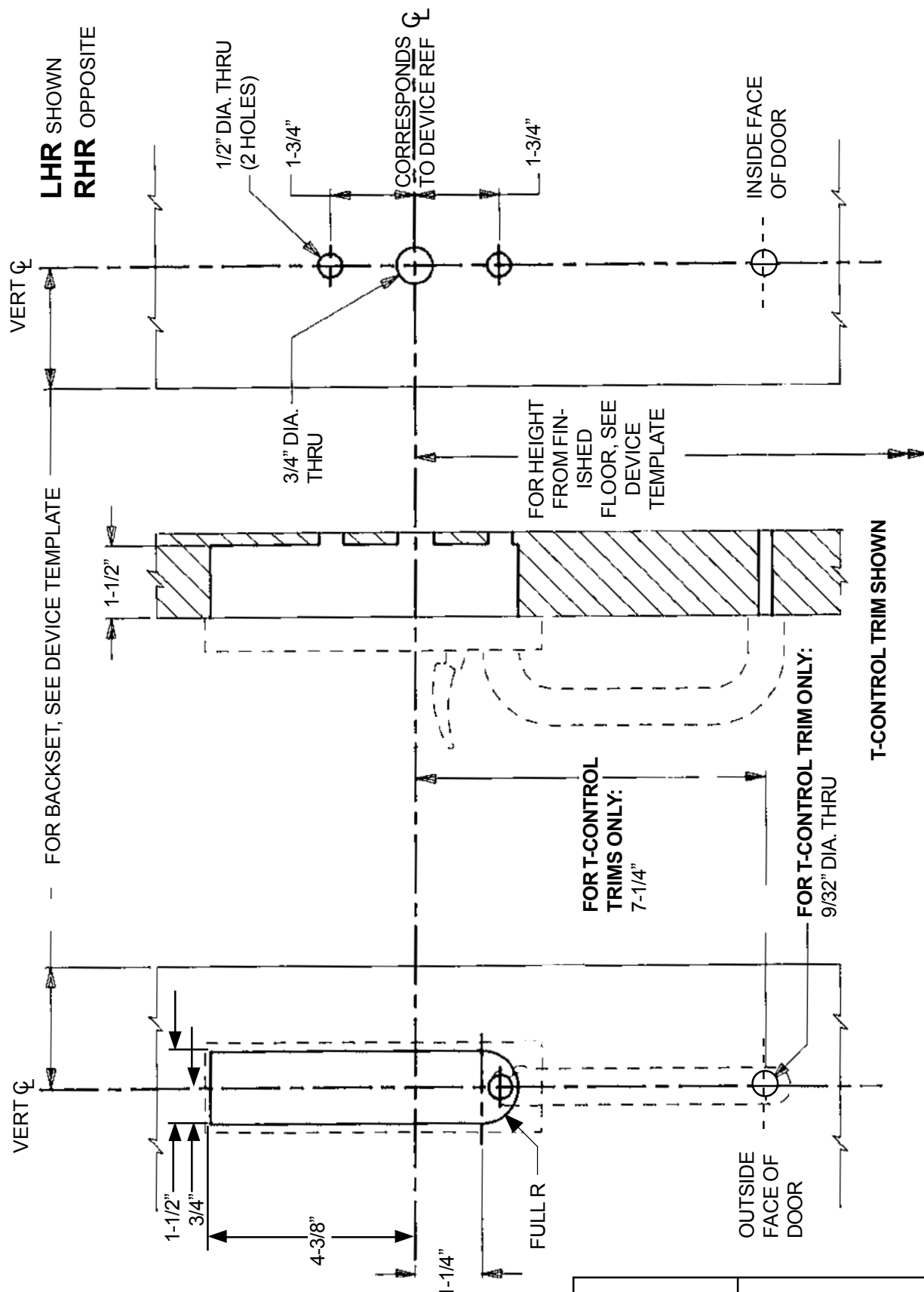
**FALCON**  
 Customer Service  
 1-877-671-7011 www.allegion.com/us

TITLE: "KE", "LE" AND "SE" TRIMS  
 FOR (F)18 & (F)XX SERIES DEVICES  
 WITH FSA OR FSE ELECTRIC LOCKING FEATURE  
 WOOD DOOR

DATE: 1-1-2001  
 TEMPLATE NUMBER - REV.  
**W-5365-2**

**W-5365-2**

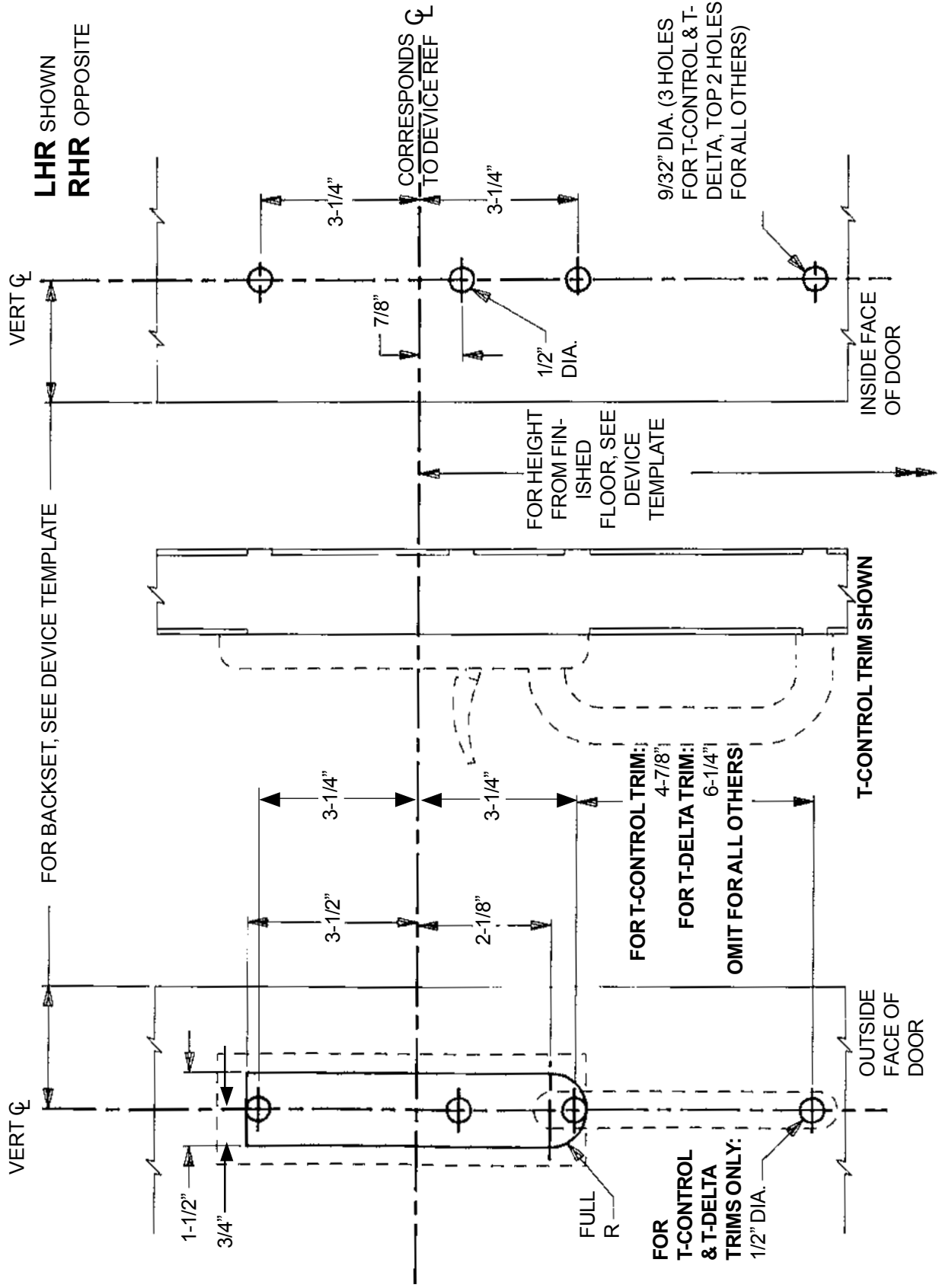




**FALCON**  
 Customer Service  
 1-877-671-7011 www.allegion.com/us

TITLE: "K", "L", "T", AND "SE" CONTROL TRIM FOR (F)19 SERIES DEVICES WITH FSA OR FSE ELECTRIC LOCKING FEATURE WOOD DOOR

DATE: 3-1-98  
 TEMPLATE NUMBER - REV.  
**W-5427-0**



DO NOT SCALE THURBOLTING TRIM

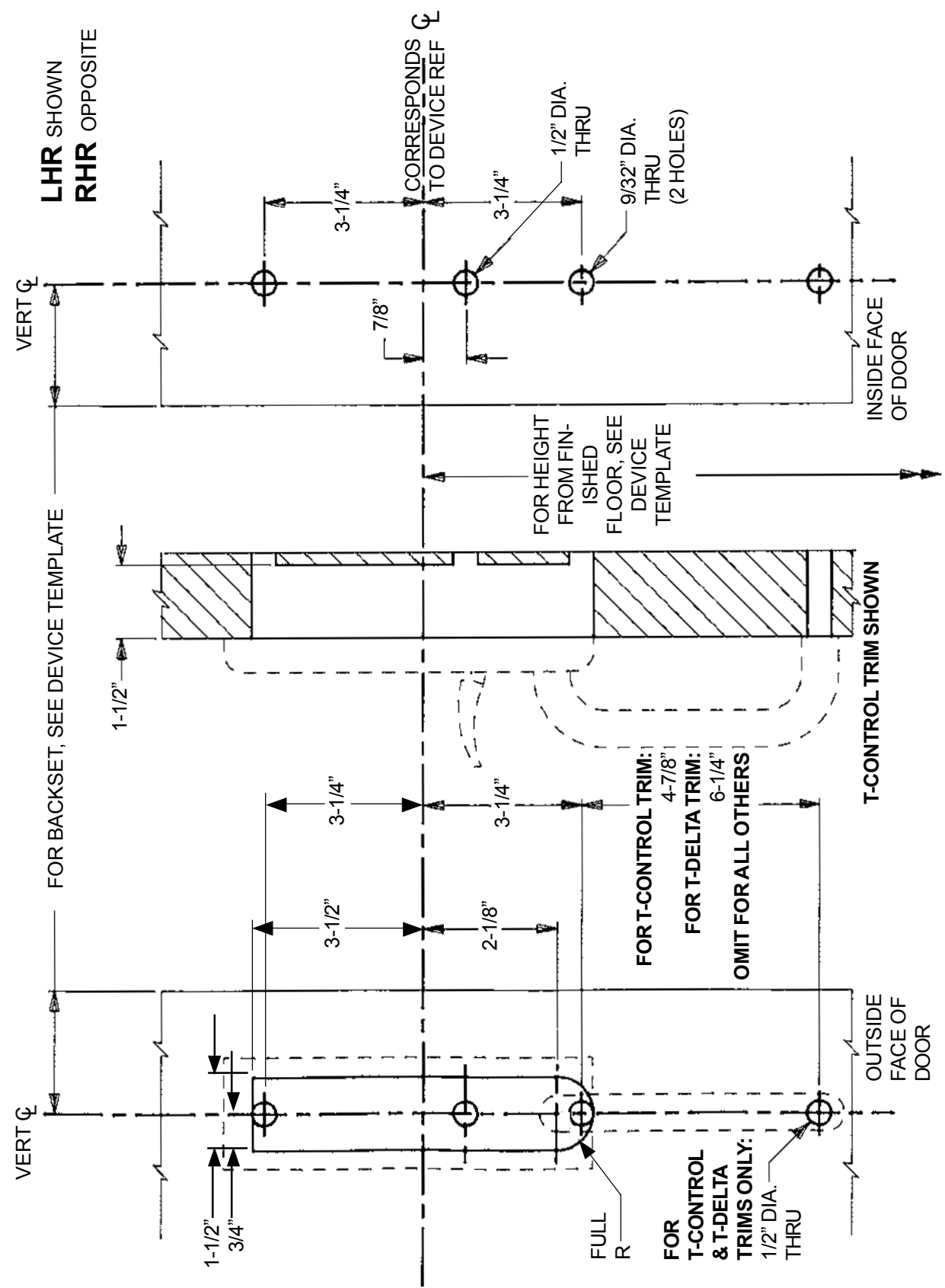
**FALCON**

Customer Service  
1-877-671-7011 www.allegion.com/us

TITLE: "K", "L", "T", AND "SE"  
CONTROL TRIM AND "T" DELTA TRIM  
FOR (F)17 SERIES DEVICES WITH FSA OR FSE  
ELECTRIC LOCKING FEATURE

DATE: 3-1-98  
TEMPLATE NUMBER - REV.  
**T-5467-2**





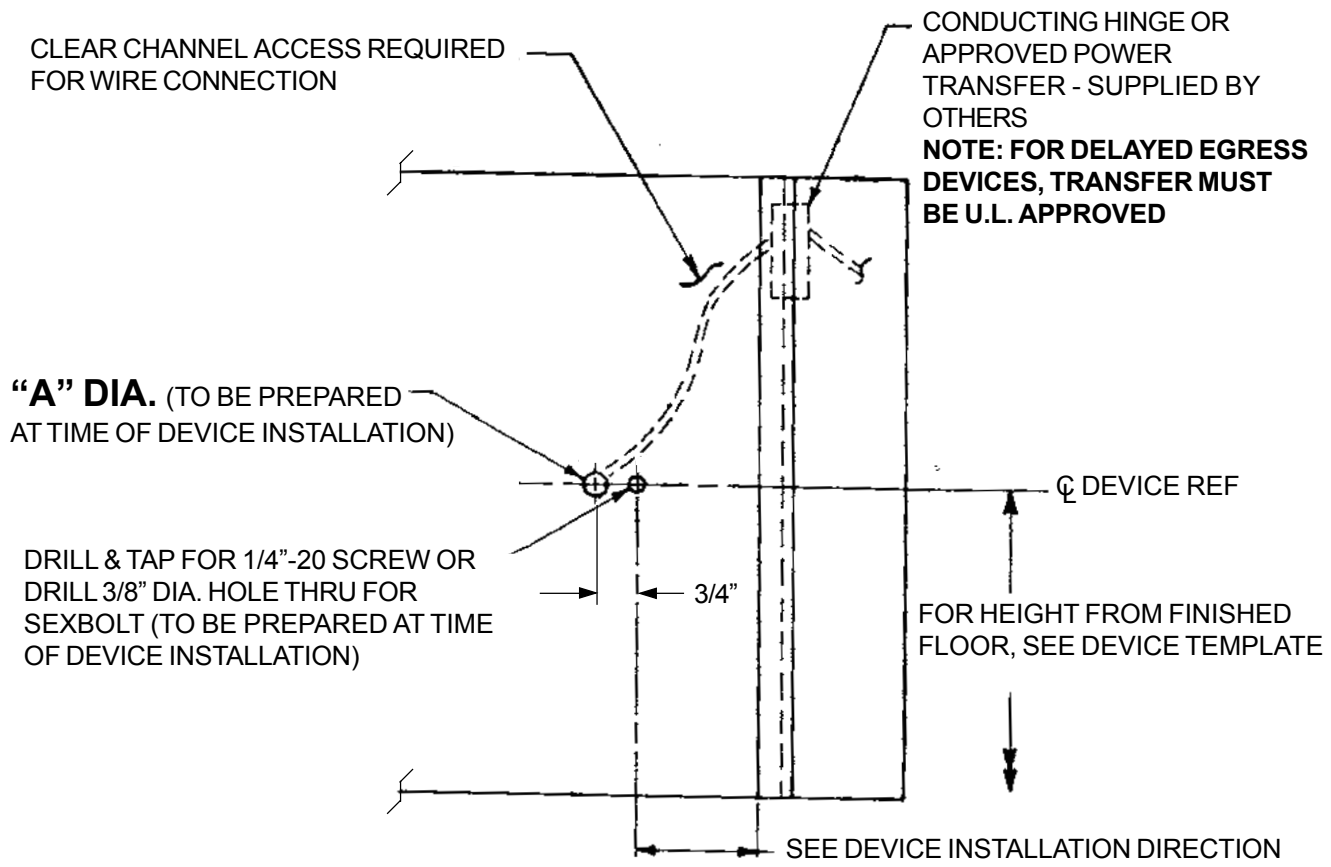
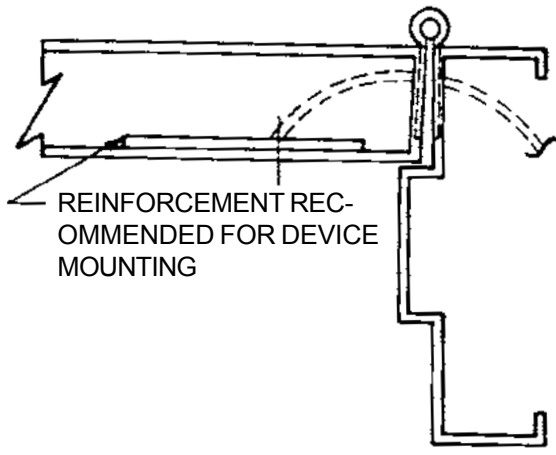
DO NOT SCALE      THRUBOLTING TRIM

**FALCON**  
Customer Service  
1-877-671-7011    www.allegion.com/us

TITLE: "K", "L", "T", AND "SE"  
CONTROL TRIM AND "T" DELTA TRIM  
FOR (F)17 SERIES DEVICES WITH FSA OR FSE  
ELECTRIC LOCKING FEATURE  
WOOD DOOR

DATE: 3-1-98  
TEMPLATE NUMBER - REV.  
**W-5467-0**

LHR SHOWN  
RHR OPPOSITE



ELECTRIFICATION FEATURE	“A”
ELECTRIC LATCH RETRACTION (ELR)	1/2”
DELAYED EGRESS (DE - 18 SERIES ONLY)	3/4”
SECURITY MONITORING (AE, DM, LK, LM, SM)	1/2”
ELECTRIC LOCK/UNLOCK TRIM (FSA/FSE)	1/2”
HARD WIRE EXIT ALARM (HWEA)	1/2”
ELECTRIC DOGGING (ED)	1/2”

④

DO NOT SCALE

**FALCON**

Customer Service  
1-877-671-7011 www.allegion.com/us

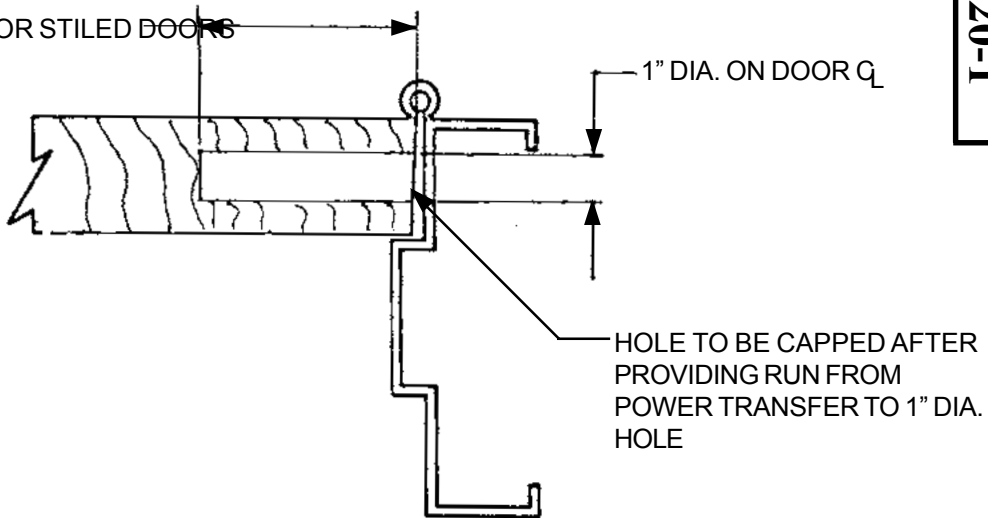
TITLE HINGE STILE PREPARATION  
FOR ELECTRIFIED DEVICES FOR  
④ (F)17, (F)18, AND (F)19 SERIES  
DEVICES

DATE: 1-15-2000  
TEMPLATE NUMBER - REV.  
**T-5020-4**

**LHR** SHOWN

**RHR** OPPOSITE

- 6" FOR FLUSH DOORS
- 1" LESS THAN STILE FOR STILED DOORS



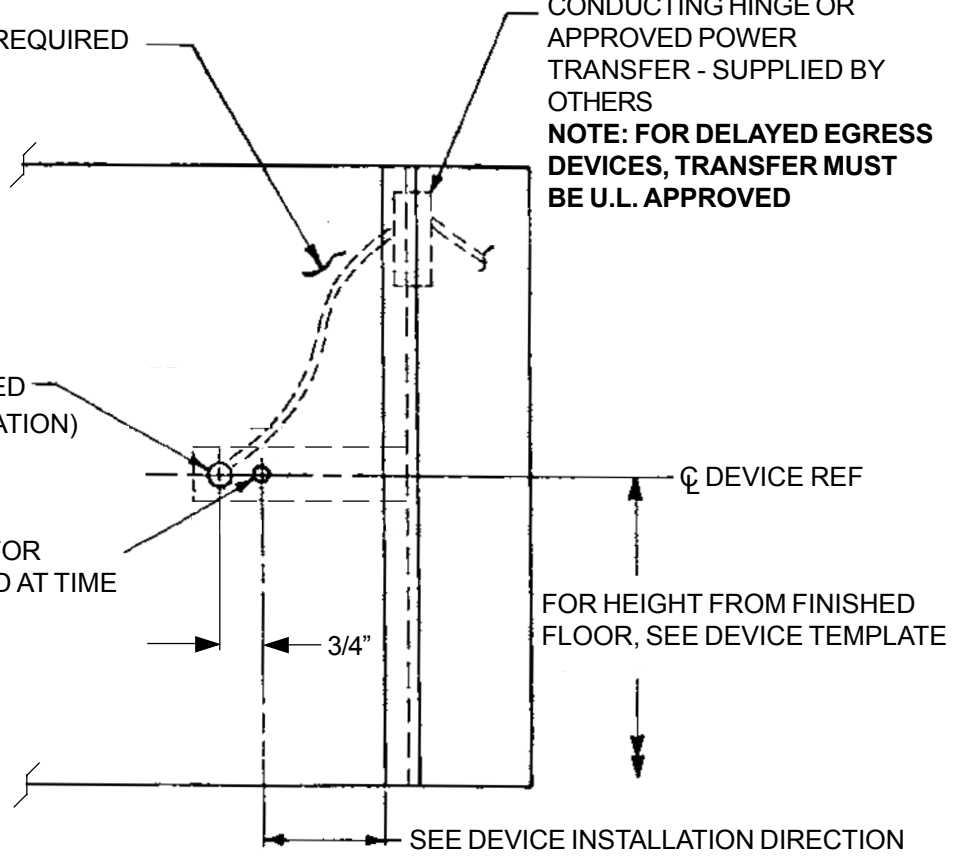
CLEAR CHANNEL ACCESS REQUIRED FOR WIRE CONNECTION

CONDUCTING HINGE OR APPROVED POWER TRANSFER - SUPPLIED BY OTHERS

**NOTE: FOR DELAYED EGRESS DEVICES, TRANSFER MUST BE U.L. APPROVED**

**"A" DIA.** (TO BE PREPARED AT TIME OF DEVICE INSTALLATION)

DRILL 3/8" DIA. HOLE THRU FOR SEXBOLT (TO BE PREPARED AT TIME OF DEVICE INSTALLATION)



SEE DEVICE INSTALLATION DIRECTION

ELECTRIFICATION FEATURE	"A"
ELECTRIC LATCH RETRACTION (ELR)	1/2"
ELECTRIC DOGGING (ED)	1/2"
DELAYED EGRESS (DE - 18 SERIES ONLY)	3/4"
SECURITY MONITORING (AE, DM, LK, LM, SM)	1/2"
ELECTRIC LOCK/UNLOCK TRIM (FSA/FSE)	1/2"
HARD WIRE EXIT ALARM (HWEA)	1/2"

①

**DO NOT SCALE**

**FALCON**

Customer Service  
1-877-671-7011 www.allegion.com/us

TITLE: HINGE STILE PREPARATION FOR ELECTRIFIED DEVICES FOR (F)17, (F)18, AND (F)19 SERIES DEVICES WOOD DOOR

①

DATE: 1-15-2000

TEMPLATE NUMBER - REV.

**W-5020-1**

**Customer Service**

1-877-671-7011

[www.allegion.com/us](http://www.allegion.com/us)