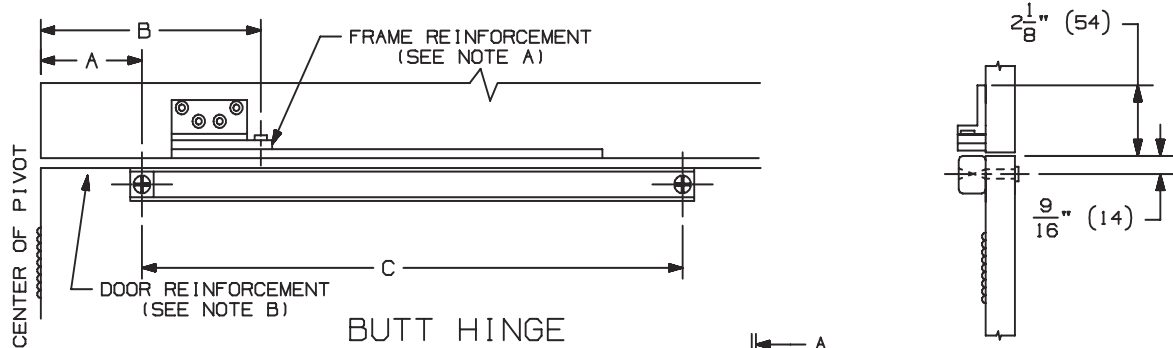


OVERHEAD HOLDERS OR STOPS MUST BE INSTALLED BEFORE CLOSERS.

1. A. DETERMINE THE MOUNTING BEING USED FROM THE ILLUSTRATIONS BELOW.
- B. THIS TEMPLATE CAN BE USED WITH THE DOOR & HINGE GROUPS LISTED BELOW. MOST CONTINUOUS HINGES ARE GROUPED WITH 4 1/2" WIDE BUTT OR 4 1/2" SWING CLEAR HINGE.
- C. USING THE OVERHEAD STOP OR HOLDER SIZE AND THE DEGREE OF OPENING DESIRED, FIND "A", "B", AND "C" DIMENSIONS FROM THE CHART ON PAGE 3. FOR DEAD STOP ADD 9/16" (14mm) TO THE "A" DIMENSION FROM THE CHART. SEE NOTE D FOR INFORMATION ABOUT DEAD STOP.



NOTES:

- A. HOLLOW METAL FRAMES SHOULD BE PROPERLY REINFORCED WITH A 3/16" (5) MINIMUM THICKNESS BY 12" (305) MINIMUM WIDTH PLATE.
- B. HOLLOW METAL DOORS SHOULD BE PROPERLY REINFORCED WITH A 3/16" (5) MINIMUM THICKNESS PLATE BY 2 1/2" (64) MINIMUM WIDTH PLATE.
- C. STOP ONLY UNITS ARE PERMITTED ON MANY FIRE DOOR APPLICATIONS. HOWEVER, MECHANICAL HOLD-OPEN DEVICES THAT REQUIRE MANUAL RELEASE ARE NOT PERMITTED FOR USE ON ANY FIRE DOOR AS OUTLINED ON NFPA80 (R) OF NFPA101 (R). CONTACT GLYNN-JOHNSON OR YOUR LOCAL REPRESENTATIVE FOR ASSISTANCE.
- D. DEAD STOP (DS) TEMPLATING MAY BE USED ON HOLD-OPEN, FRICTION STOP AND STOP ONLY MODELS, BUT SHOULD NOT BE USED ON "SE" MODELS. THE DS POSITION IS REACHED WHEN THE SHOCK SPRING IS FULLY COMPRESSED. WHEN DS TEMPLATING IS USED, THE INITIAL DEGREE OF STOP WILL BE 5°-7° LESS THAN THE DS OPENING. FOR USE ON DOORS OPENING BACK TO BACK, AGAINST A WALL OR OBSTRUCTION.

90 ADJUSTMENTS:

HOLD-OPEN TENSION ADJUSTMENT (HOLD-OPEN UNIT ONLY)
 USING A PHILLIPS SCREWDRIVER, TURN SCREW IN THE END OF SLIDER CLOCKWISE TO INCREASE THE HOLD-OPEN TENSION AND COUNTERCLOCKWISE TO DECREASE THE HOLD-OPEN TENSION.

FRICTION TENSION ADJUSTMENT (FRICTION UNIT ONLY)
 USING A 3/32" ALLEN WRENCH, TURN SET SCREW IN THE MIDDLE OF THE SLIDER CLOCKWISE TO INCREASE THE FRICTION TENSION AND TURN COUNTERCLOCKWISE TO DECREASE THE FRICTION TENSION.

SCREW DETAILS			
	QTY	WOOD	METAL
ANGLE	4	1/4"-20 x 1/2" FPHMS	1/4"-20 x 1/2" FPHMS
JAMB	4	#14 x 1 1/2" FPHSMS	1/4"-20 x 3/4" FPHMS
DOOR	2	5/16"-18 x 1 1/2" PPHMS	5/16"-18 x 1 1/2" PPHMS
	2	5/16"-18 x 1 9/16" SEX BOLT	5/16"-18 x 1 9/16" SEX BOLT

DOOR THICKNESS	HINGE & TYPE SHOWN	MOUNTING GROUP
1 3/4" (44mm)	4" WIDE BUTT	1
	4 1/2" WIDE BUTT	1
	3/4" OFFSET PIVOT	1
	4 1/2" SWINGCLEAR	1
	5" SWINGCLEAR	1
2" (51mm)	4 1/2" WIDE BUTT	1
	5" WIDE BUTT	1
	3/4" OFFSET PIVOT	1
	4 1/2" SWINGCLEAR	1
	5" SWINGCLEAR	1
2 1/4" (57mm)	5" WIDE BUTT	1
	3/4" OFFSET PIVOT	1
	4 1/2" SWINGCLEAR	1
	5" SWINGCLEAR	1

GLYNN-JOHNSON

**90 SERIES SURFACE OVERHEAD
 HOLDER HINGE (PULL SIDE)
 INSTALLATION TEMPLATE**



NOTE: DIMENSIONS IN () ARE IN MILLIMETERS

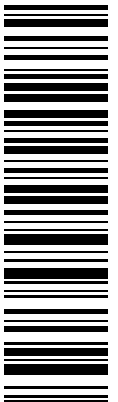
TEMPLATE NUMBER:

INST.90JP.PG1_B

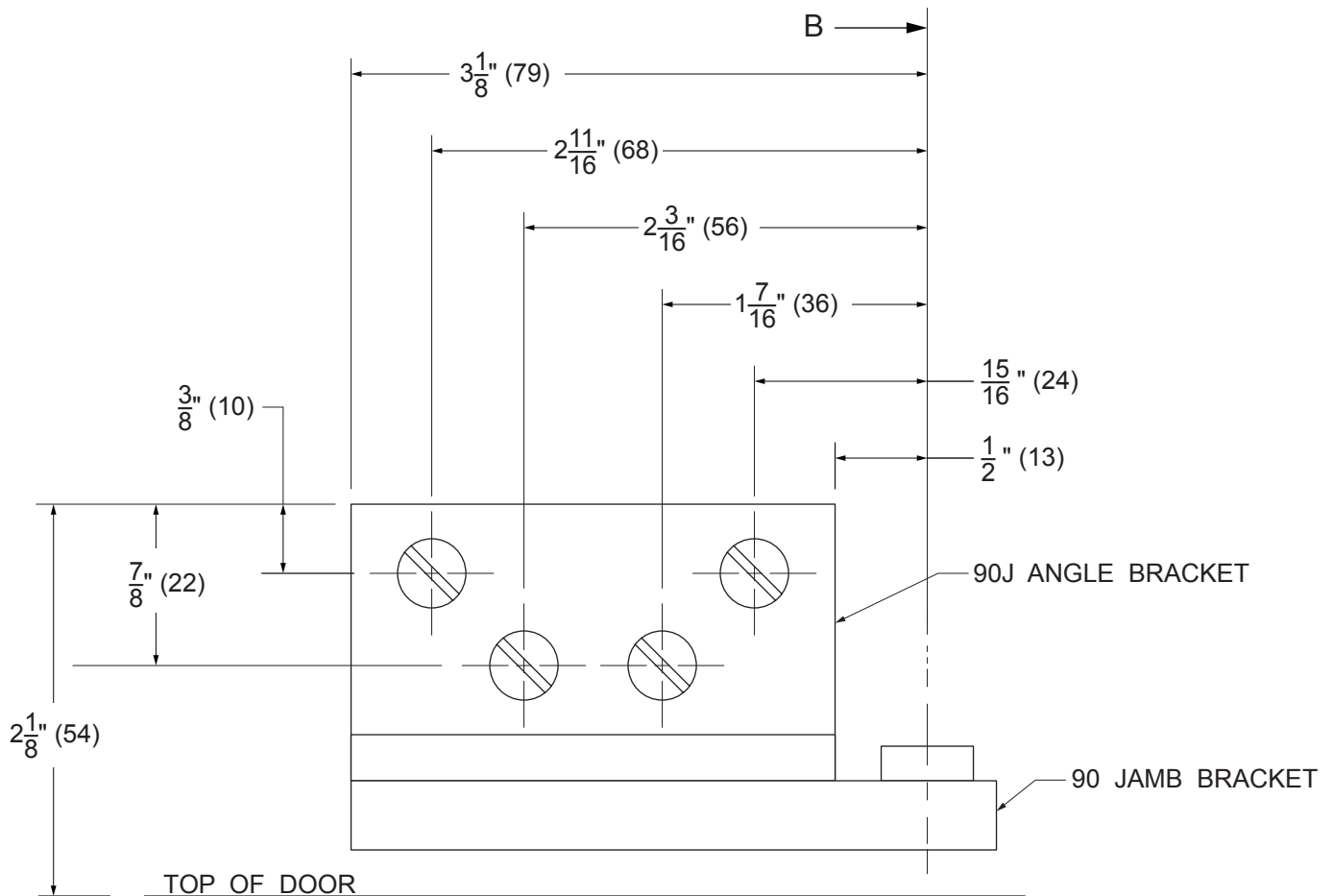
DATE:

05-29-15

INST.90JP



2. A. LOCATE "B" DIMENSION ON THE FACE OF THE FRAME. NOTE THAT THE "B" DIMENSION IS MEASURED FROM THE CENTERLINE OF THE HINGE AS SHOWN.
- B. FOR METAL FRAMES, USE #7 DRILL AND 1/4"-20 TAP IN 4 PLACES. FOR WOOD FRAMES DRILL 3/16" PILOT HOLES IN 4 PLACES. MOUNTING HOLES SHOULD BE PREPARED IN THE FIELD.



3. A. LOCATE "A" & "C" DIMENSION ON THE DOOR. NOTE THAT THE "A" DIMENSION IS MEASURED FROM THE CENTERLINE OF HINGE AS SHOWN.
- B. DRILL THE 1/2" (13) DIAMETER THROUGH HOLES DOWN 9/16" (14) FROM THE TOP OF THE DOOR IN TWO PLACES. MOUNTING HOLES SHOULD BE PREPARED IN THE FIELD.
4. A. INSTALL ANGLE BRACKET ONTO STANDARD JAMB BRACKET WITH 4 1/4"-20 x 1/2" FPHMS PROVIDED WITH THE ANGLE BRACKET.
- B. INSTALL THE CHANNEL ON THE DOOR WITH THE SHOCK SPRING TOWARDS THE HINGE EDGE OF DOOR.
- C. INSTALL THE ANGLE BRACKET TO THE FACE OF THE FRAME.

GLYNN-JOHNSON

90 SERIES SURFACE OVERHEAD
HOLDER HINGE (PULL SIDE)
INSTALLATION TEMPLATE



NOTE: DIMENSIONS IN () ARE IN MILLIMETERS

TEMPLATE
NUMBER:

INST.90JP.PG2_B

DATE:
05-29-15

MOUNTING GROUP 1 90 SERIES SURFACE OVERHEAD STOP & HOLDER

CAUTION: "A" & "B" DIMENSIONS ARE MEASURED FROM THE CENTERLINE OF PIVOT, NOT EDGE OF DOOR
 FOR DEAD STOP ADD 9/16" (14mm) TO THE "A" DIMENSION * NOT TO BE USED WITH SWINGCLEAR HINGES
 FOR SE STOPS USE HOLD-OPEN MOUNTING DIMENSION
 HO=HOLD-OPEN FOR HOLDERS, OPENING FOR STOPS
 I=ARM LENGTH FROM PIVOT CENTERLINE TO PIVOT CENTERLINE
 (FOR REFERENCE ONLY)

902	DEGREE	85 HO		90 HO		95 HO		100 HO		105 HO		110 HO		I	
		A	B	A	B	A	B	A	B	A	B	A	B		
902	IN. 23 1/16-27	3 11/16	5 7/16	3 3/8	5 1/16	3 1/8	4 13/16	2 15/16	4 9/16	2 3/4	4 5/16	2 9/16	4 1/8	19 3/4	10
	mm	94	138	86	129	79	122	75	116	70	110	65	105	502	254
903	IN. 27 1/16-33	5 1/16	7 3/16	4 11/16	6 13/16	4 5/16	6 1/2	4	6 3/16	3 3/4	5 15/16	3 1/2	5 3/4	22	12
	mm	129	183	119	173	110	165	102	157	95	151	89	146	559	305
904	IN. 33 1/16-39	8 9/16	8 15/16	8 1/16	8 7/16	7 11/16	8	7 5/16	7 5/8	7	7 1/4	6 3/4	6 15/16	23 3/4	15 3/4
	mm	217	227	205	214	195	203	186	194	178	184	171	176	603	400
905	IN. 39 1/16-45	12 3/4	10 7/16	12 3/16	9 7/8	11 11/16	9 3/8	11 1/4	8 7/8	10 13/16	8 7/16	10 1/2	8 1/8	24 1/2	20
	mm	324	265	310	251	297	238	286	225	275	214	267	206	622	508
906	IN. 45 1/16-45	19 1/4	11 1/8	18 9/16	10 7/16	18	9 7/8	17 7/16	9 3/8	17	8 7/8	16 5/8	8 7/16	26	26
	mm	489	283	471	265	457	251	443	238	432	225	422	214	660	660

MOUNTING GROUP #1

GLYNN-JOHNSON

90 SERIES SURFACE OVERHEAD
 HOLDER HINGE (PULL SIDE)
 INSTALLATION TEMPLATE



NOTE:

TEMPLATE NUMBER:

INST.90JP.PG3_B

DATE:

05-29-15