



HL6-9000



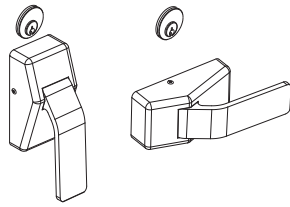
829695-00

Push/Pull Mortise Latch

Installation Instructions

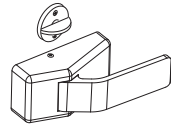
1 Mortise Installation

- ① When the cylinder application is used, the paddle on the key side may be mounted in the down or horizontal position.



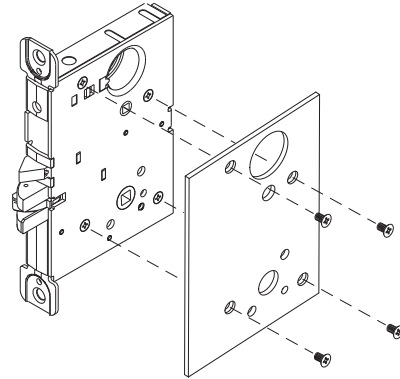
OR

When the thumbturn application is used, paddles must be mounted in the horizontal position only.



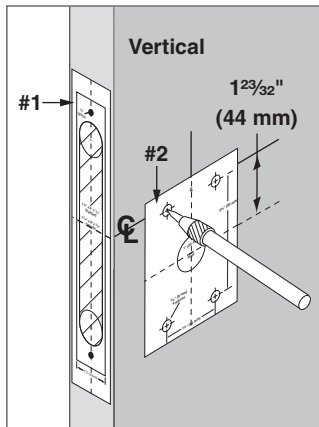
- 1c For HL6ML (lead lined) ONLY, install the lead plate.

- ① **NOTE:** Additional door preparation may be needed to install the HL6ML.

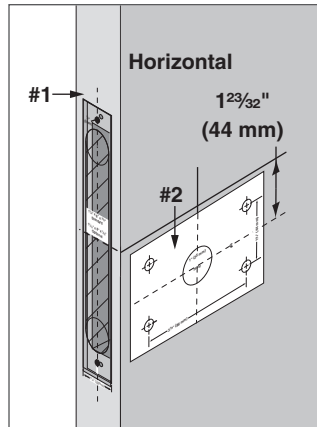


- 1a Use templates #1 and #2 to check holes.

- ① **NOTE:** If the door holes do not match the template, see the Door Preparation section.
- ① **NOTE:** Use a chisel to make a pocket for the stud plates that are installed in Step 2.

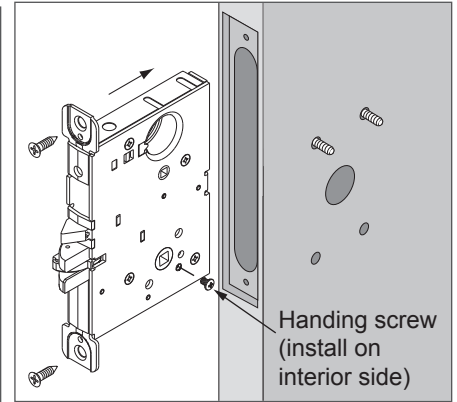
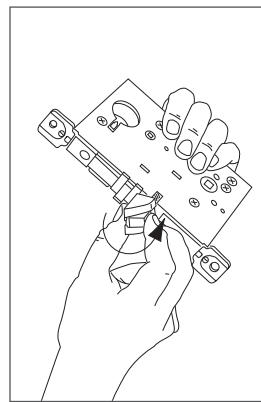


OR



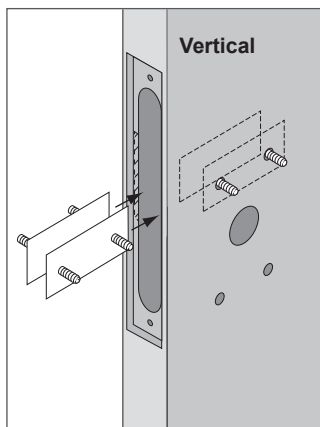
- 1d Install the mortise lock.

- ① **NOTE:** To reverse the latch, pull out and rotate 180°.

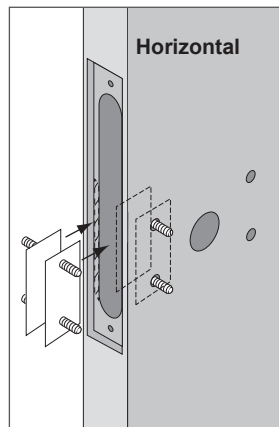


- 1b Install stud plates.

- ① **NOTE:** Additional notching to the back of the mortise hole is necessary to install the stud plates.

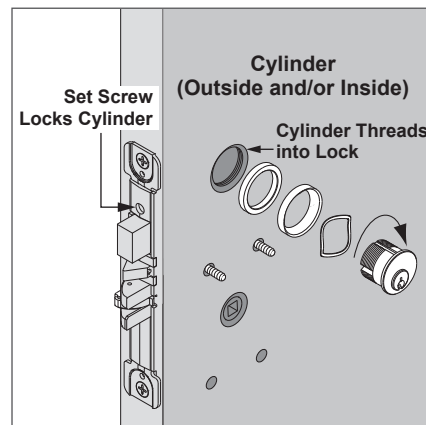


OR

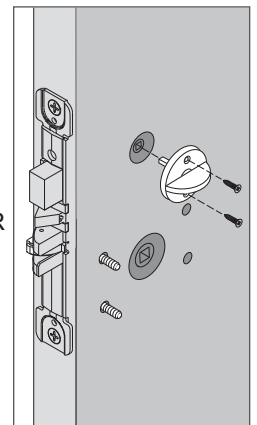


- 1e Install the cylinder or thumbturn, as required.

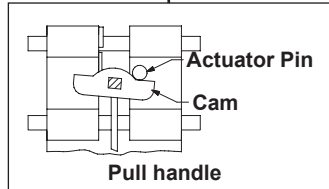
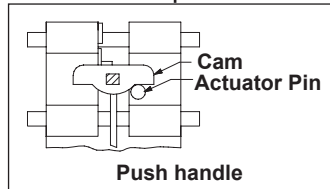
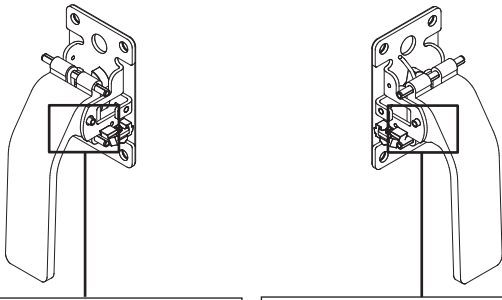
- ① **NOTE:** 1-1/8" mortise cylinder with clover cam to be used on all functions except the L9060 outside, which requires a straight cam.



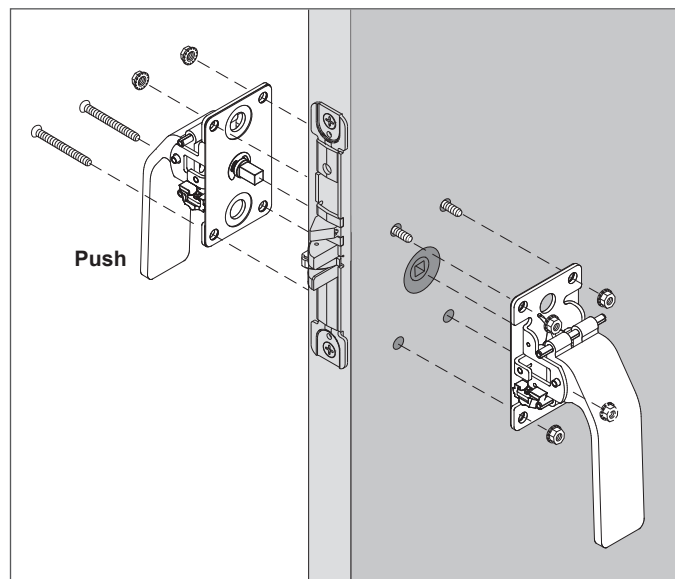
OR



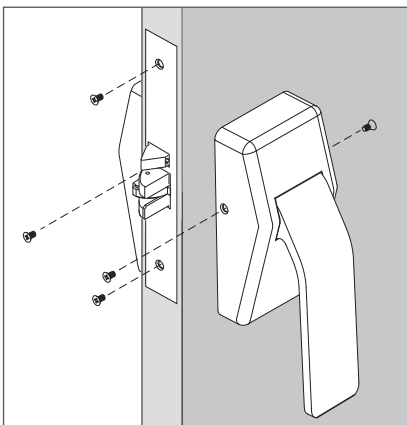
1f Position cams as shown.



1g Install push and pull levers.

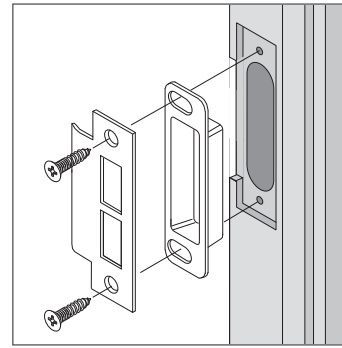


1h Install covers and armor front.



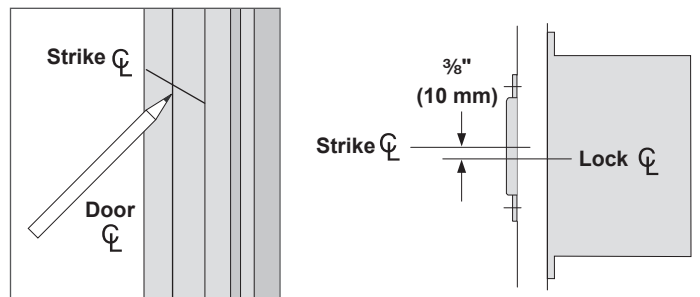
1i Install strike.

① **NOTE:** If the frame is not prepared, see the Frame Preparation below.

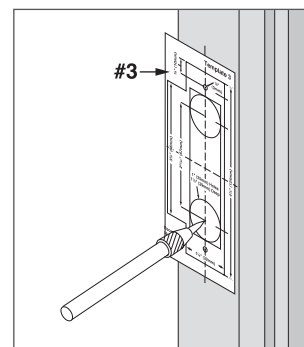


2 Frame Preparation

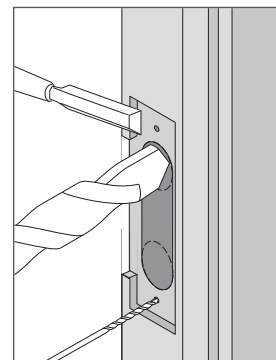
2a Locate strike center lines (pic) on frame.



2b Mark the frame using template #3.

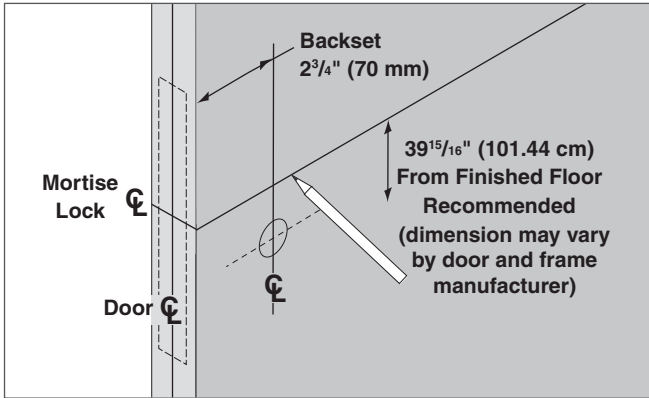


2c Drill and mortise the frame per the template.

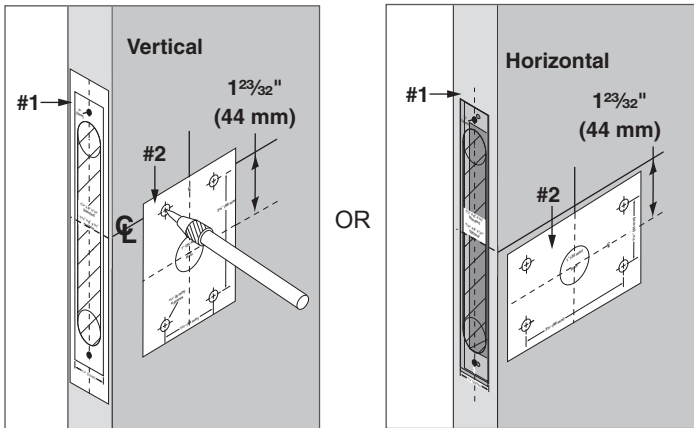


3 Door Preparation

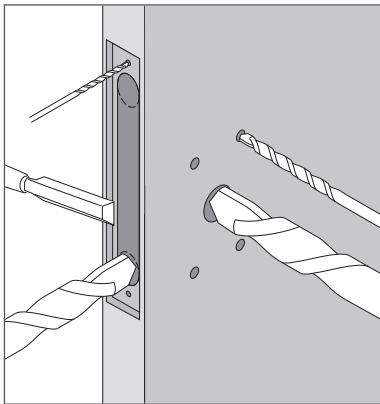
3a Mark center lines (☉).



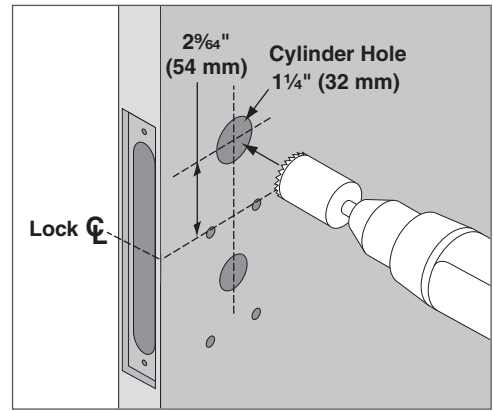
3b Mark the door using Templates #1 and #2.



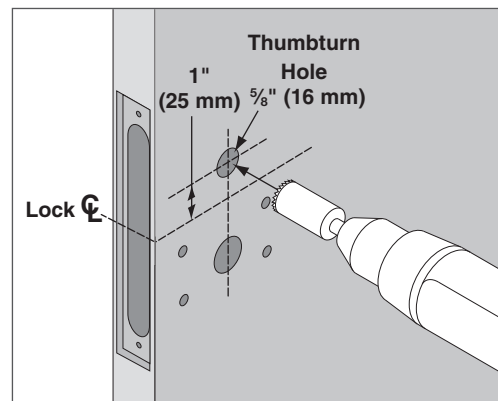
3c Drill and mortise the door per the template.



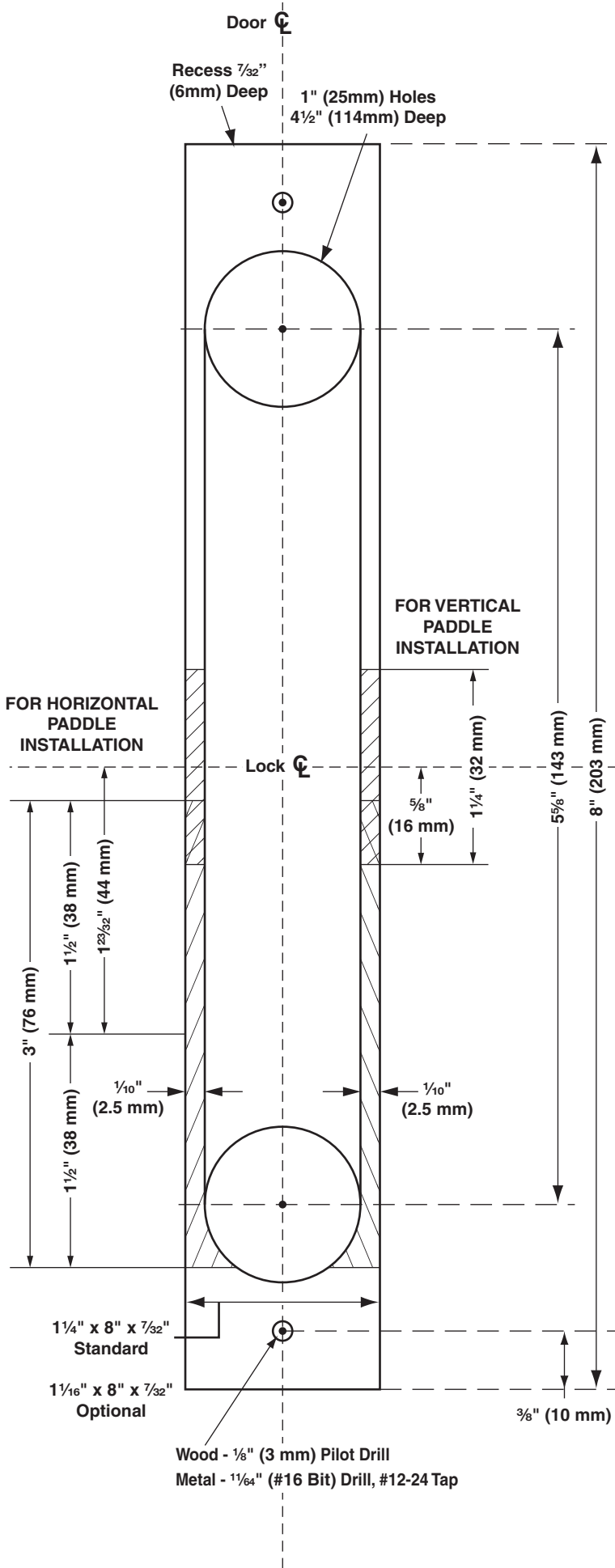
4 Cylinder Preparation



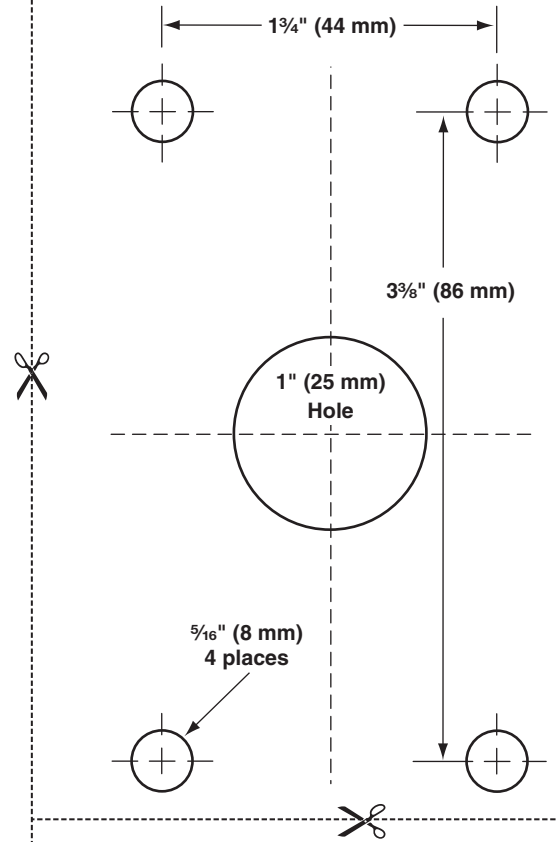
5 Thumbturn Preparation



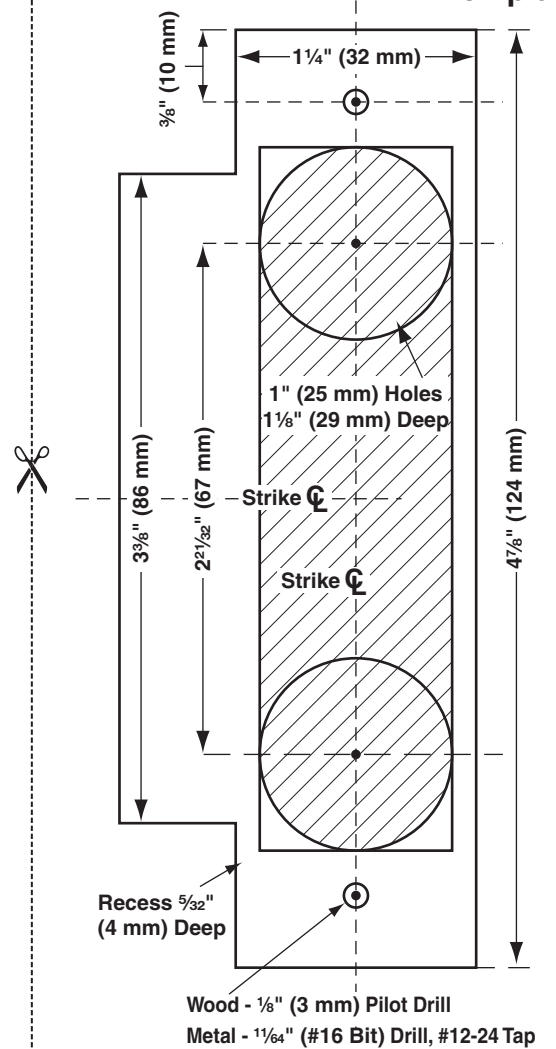
Template 1



Template 2

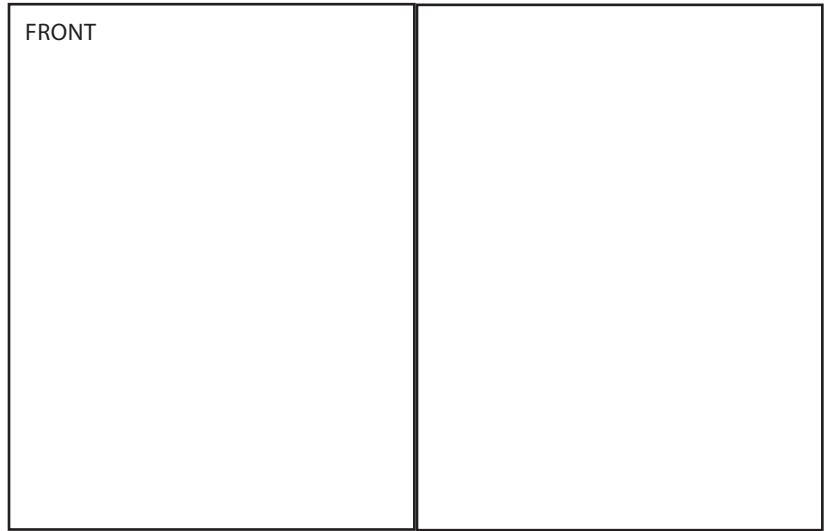


Template 3

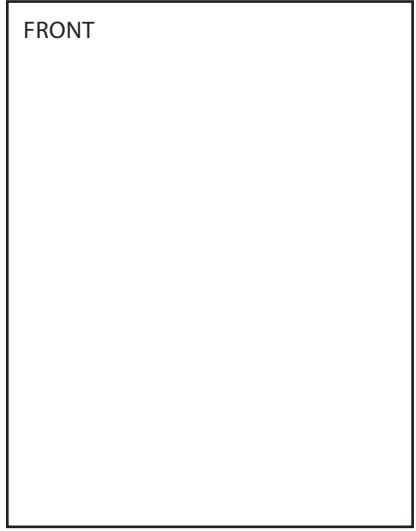


17.000

8.500



BEGINNING SHEET



FINAL SIZE

Additional Notes:
1. None

Revision History						Revision Description: G > Revised artwork						
B	C	D	E	F	G							
N/A	N/A	N/A	N/A	075349	XXXXX							
Material White Paper						Edited By		Approved By		EC Number	Release Date	
						D. Toppins		M. Sasso		xxxxx	05-11-18	
Notes 1. printed two sides 2. printed black 3. tolerance ± .13 4. printed in country may vary 5. drawings not to scale						Title INSTALLATION INSTRUCTIONS HL6-9000 PUSH/PULL MORTISE LATCH						
						Creation Date N/A		Number 829695-00			Revision G	
						Created By N/A		Activity 3899 Hancock Expwy Security, CO 80911			© Allegion 2018	
						Software: InDesign CS6						