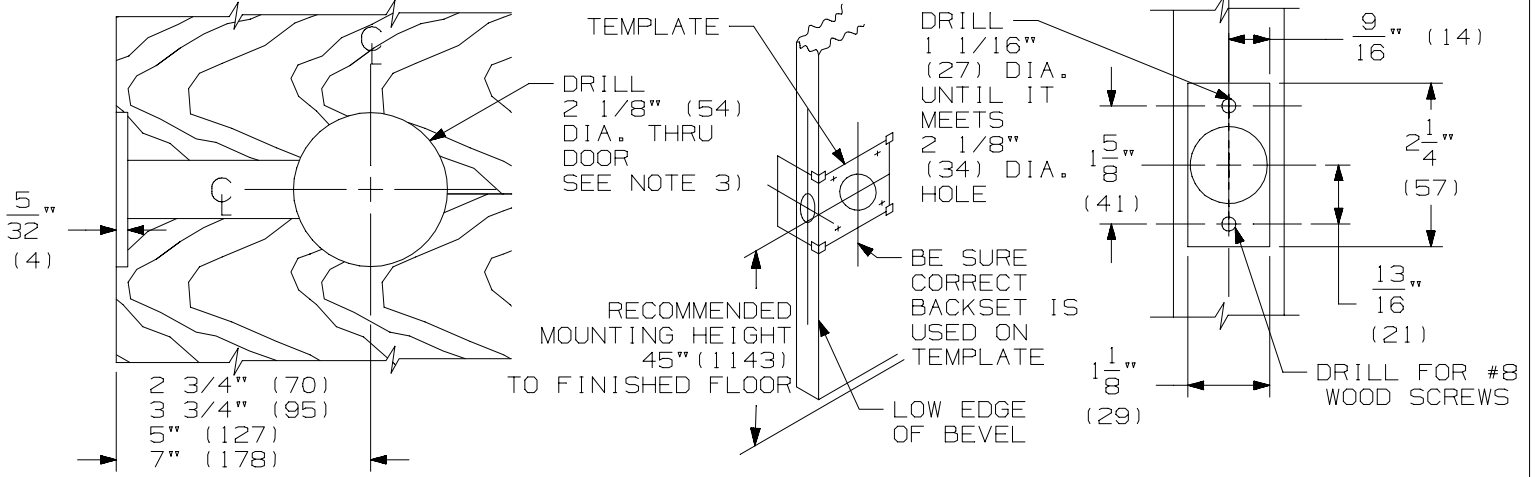


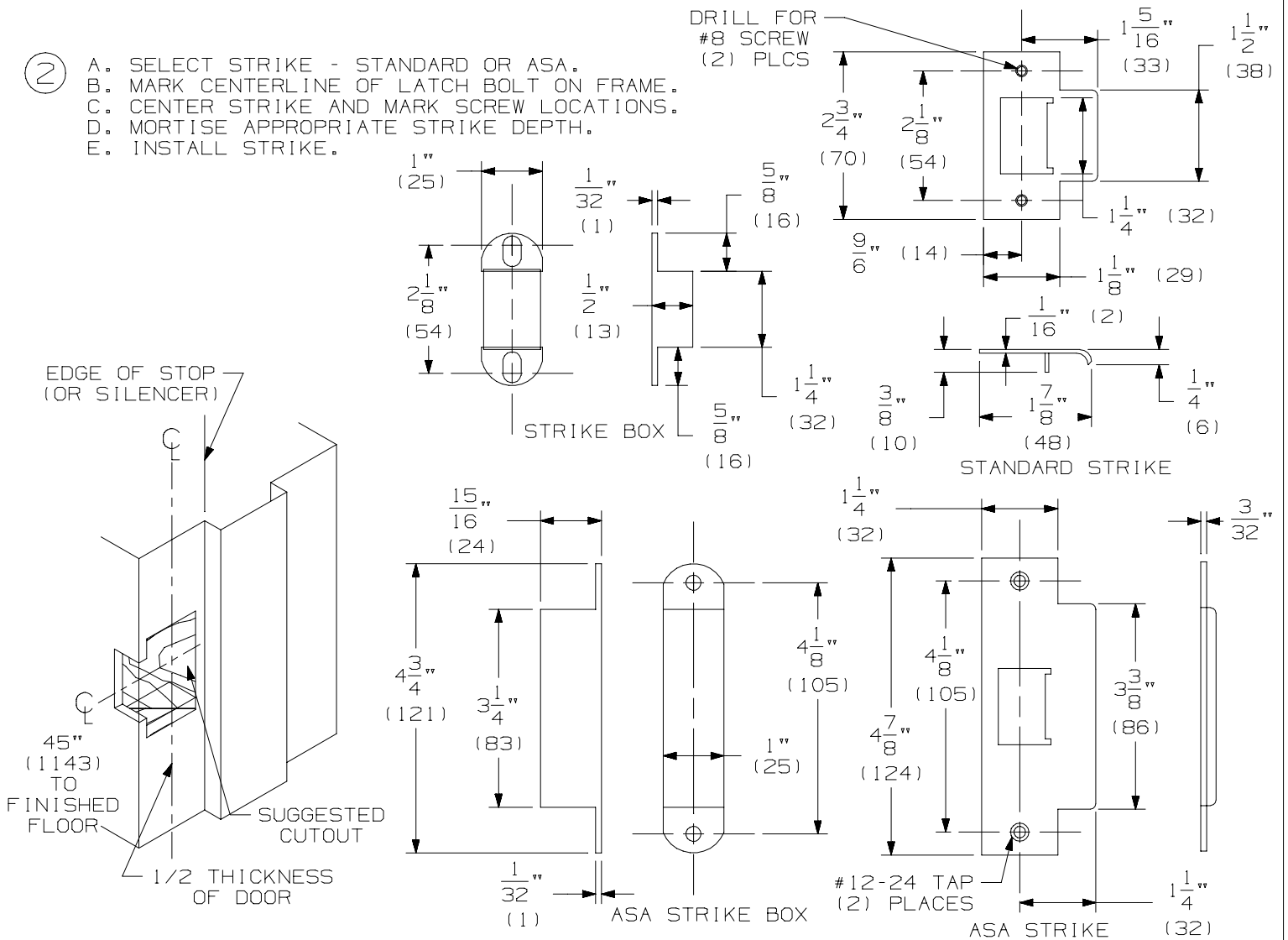
- ① A. INSTALL DOOR.
- B. MARK HORIZONTAL CENTERLINE ON DOOR AND EDGE OF DOOR.
- C. TAPE VERTICAL OR HORIZONTAL TEMPLATE TO THE DOOR (CHECK BACKSET).
- D. PREPARE DOOR FOR MOUNTING HOLES AS INDICATED ON TEMPLATE.

NOTES:

- 1. WOOD DOOR SHOWN.
- 2. FOR METAL DOORS USE #161 STANDARD CUTOUT.
- 3. THE 2 1/8" (54) HOLE CAN BE AS SMALL AS 1 1/16 (27) DIA.
- 4. LATCHES ARE NOT ADJUSTABLE FOR BEVELED EDGE DOORS.



- ② A. SELECT STRIKE - STANDARD OR ASA.
- B. MARK CENTERLINE OF LATCH BOLT ON FRAME.
- C. CENTER STRIKE AND MARK SCREW LOCATIONS.
- D. MORTISE APPROPRIATE STRIKE DEPTH.
- E. INSTALL STRIKE.



GLYNN-JOHNSON

**HL6EO EXIT ONLY OR HL6EN ENTRANCE ONLY
INSTALLATION TEMPLATE**



NOTE: DIMENSIONS IN () ARE IN MILLIMETERS

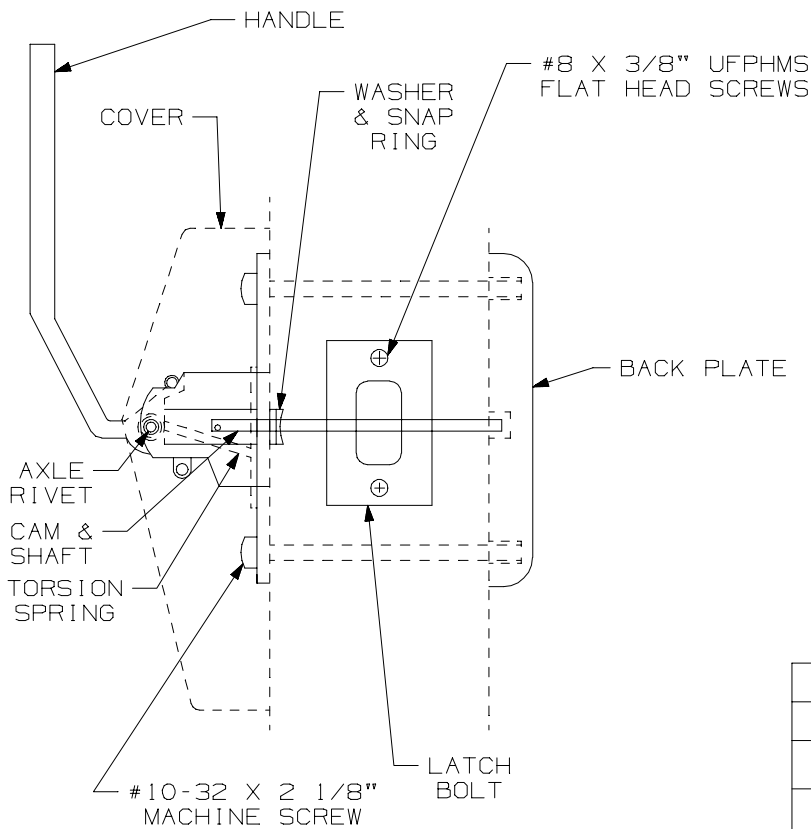
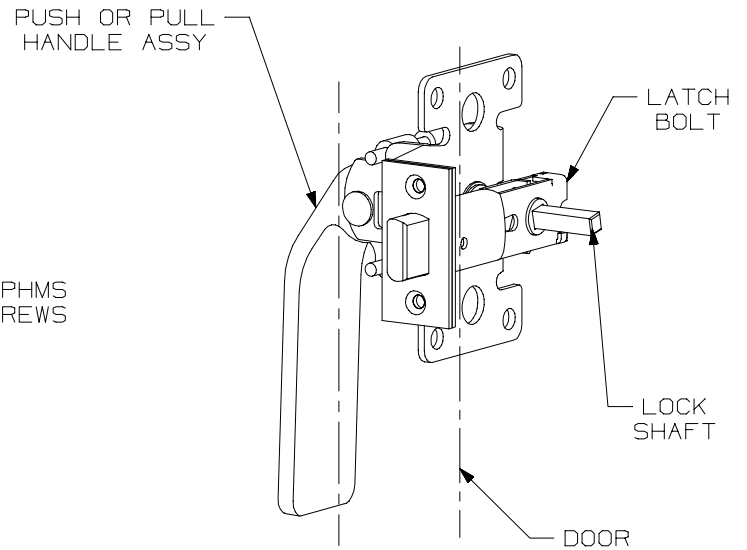
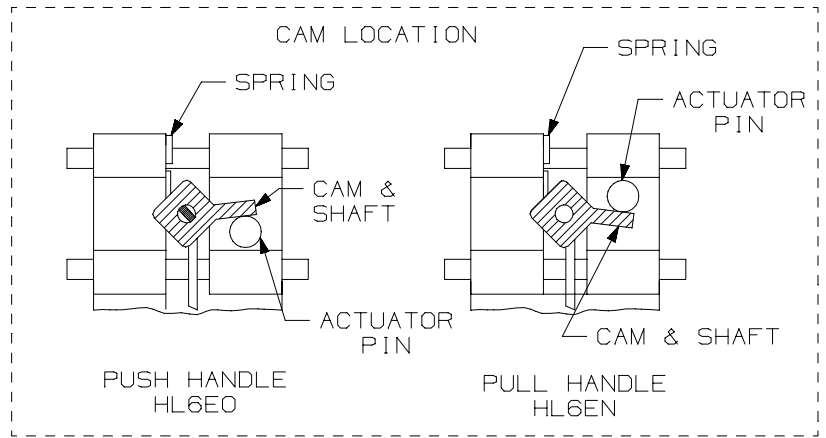
TEMPLATE NUMBER:

INST.HL6EO_B.PG1

DATE:
05-29-15

③

- A. INSTALL LATCH BOLT ASSEMBLY WITH RADIUS SIDE OF LATCH BOLT ON PUSH SIDE OF DOOR
- B. REMOVE COVER FROM HANDLE ASSEMBLY.
- C. CHECK THE CAM POSITION ON THE HANDLE ASSEMBLY (SEE CHART).
- D. INSTALL HANDLE ASSEMBLY WITH LOCK SHAFT THRU LATCH BOLT ASSEMBLY.
- E. INSTALL BACK PLATE WITH LOCK SHAFT INTO CENTER HOLE.
- F. SECURE WITH SCREWS INTO BACK PLATE.
- G. INSTALL COVER.



SCREW DETAILS			
	QTY.	WOOD	METAL
HANDLE ASSY.	4	10-32 x 2 1/8 PPHMS	
COVER	2	6-32 x 1/4 UFPHMS	
LATCH BOLT	2	8 x 3/4 FPHSMS	8-32x3/4 UFPHMS
STANDARD STRIKE	2	8 x 3/4 FPHSMS	8-32 x 3/4 UFPHMS
ASA STRIKE	2	12 x 3/4 FPHSMS	12-24 x 1/2 UFPHMS

GLYNN-JOHNSON

**HL6EO EXIT ONLY OR HL6EN ENTRANCE ONLY
INSTALLATION TEMPLATE**



NOTE: DIMENSIONS IN () ARE IN MILLIMETERS

TEMPLATE NUMBER:

INST.HL6EO_B.PG2

DATE:

05-29-15