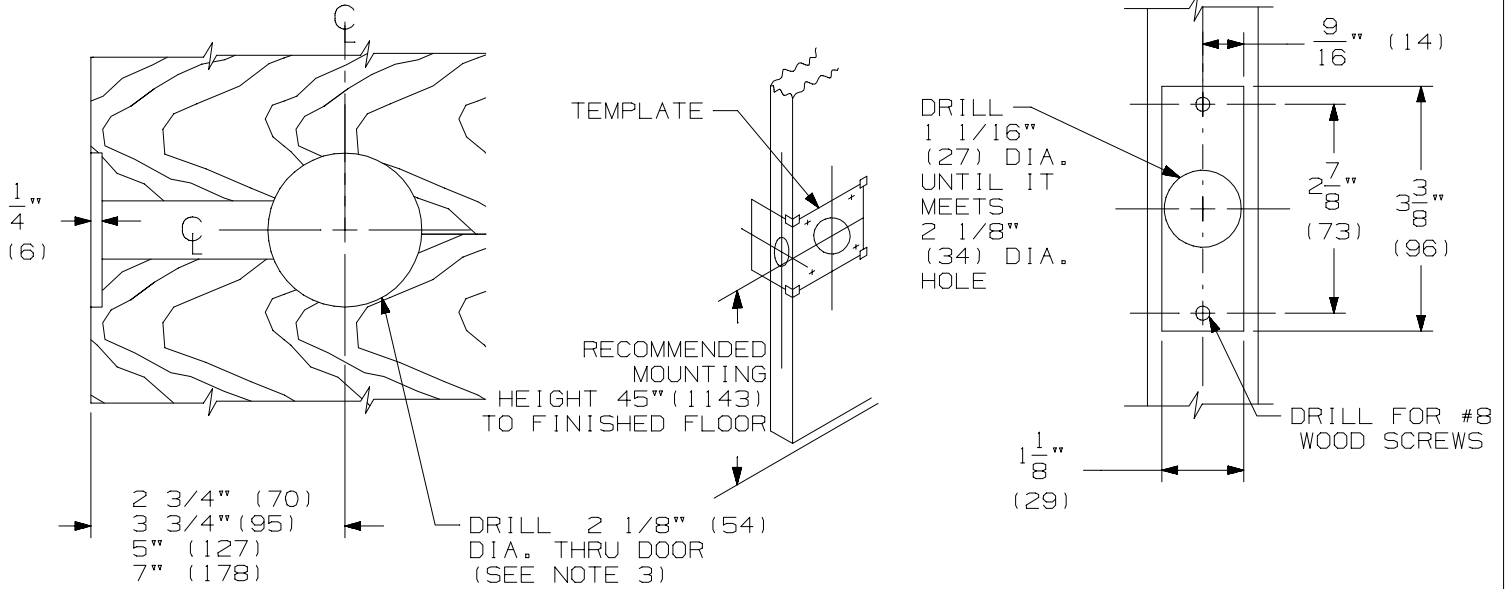


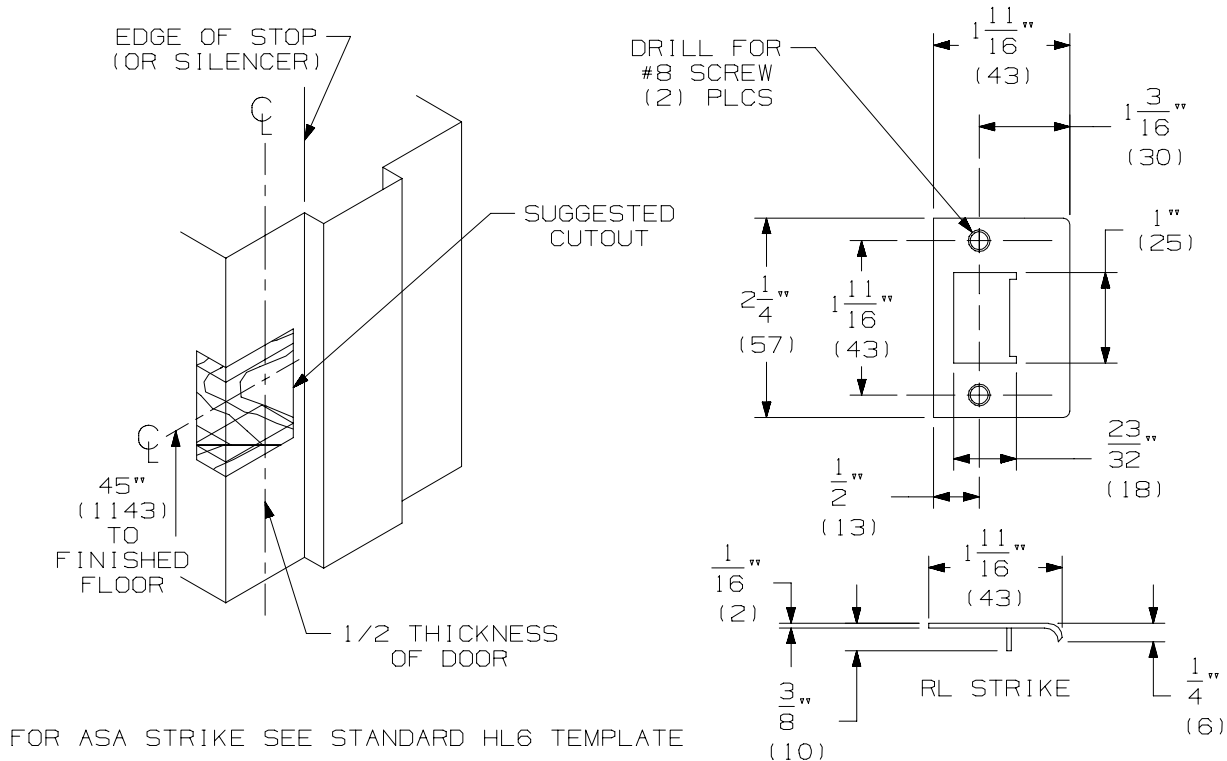
1. A. INSTALL DOOR.
- B. MARK HORIZONTAL CENTERLINE ON DOOR AND EDGE OF DOOR.
- C. TAPE VERTICAL OR HORIZONTAL TEMPLATE TO THE DOOR (CHECK BACKSET).
- D. PREPARE DOOR FOR MOUNTING HOLES AS INDICATED ON TEMPLATE.

NOTES:

1. WOOD DOOR SHOWN.
2. FOR METAL DOORS USE #161 STANDARD CUTOUT.
3. THE 2 1/8" (54) HOLE CAN BE AS SMALL AS 1 1/16 (27) DIA.
4. LATCHES ARE NOT ADJUSTABLE FOR BEVELED EDGE DOORS.



2. A. MARK CENTERLINE OF LATCH BOLT ON FRAME.
- B. CENTER STRIKE AND MARK SCREW LOCATIONS.
- C. MORTISE APPROPRIATE STRIKE DEPTH.
- D. INSTALL STRIKE.



FOR ASA STRIKE SEE STANDARD HL6 TEMPLATE

GLYNN-JOHNSON

**HL6RL PUSH-PULL ROLLER
LATCH CONVERSION
INSTALLATION TEMPLATE**



ALLEGION

NOTE: DIMENSIONS IN () ARE IN MILLIMETERS

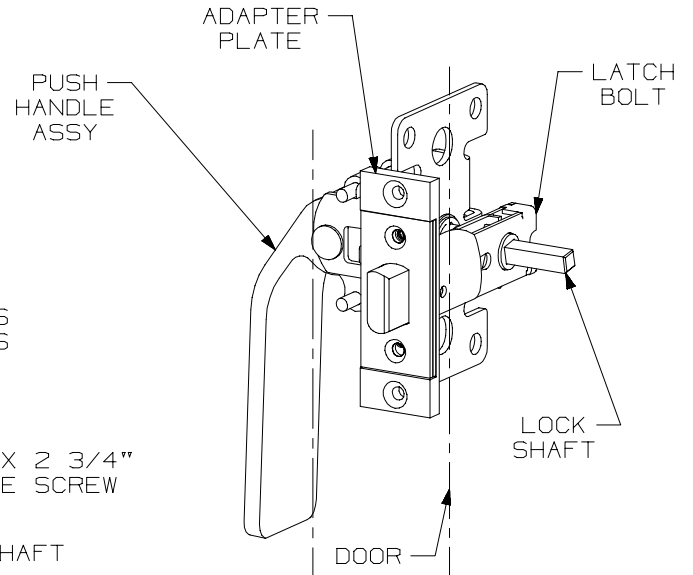
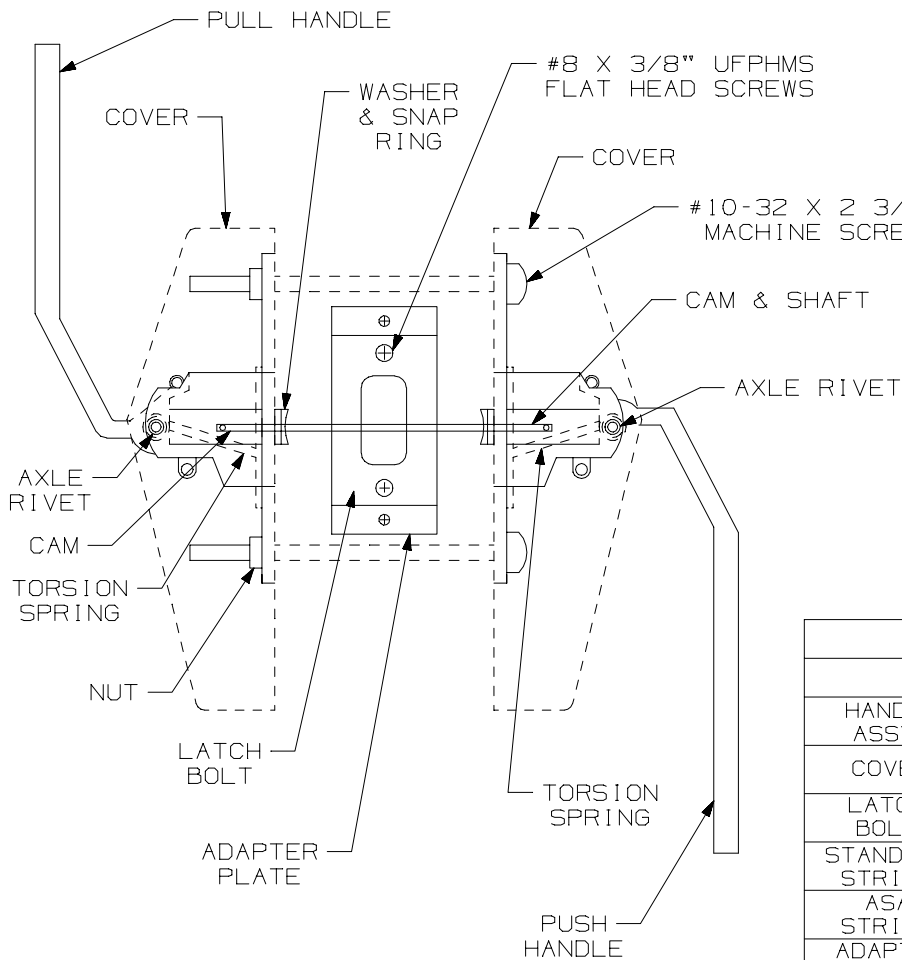
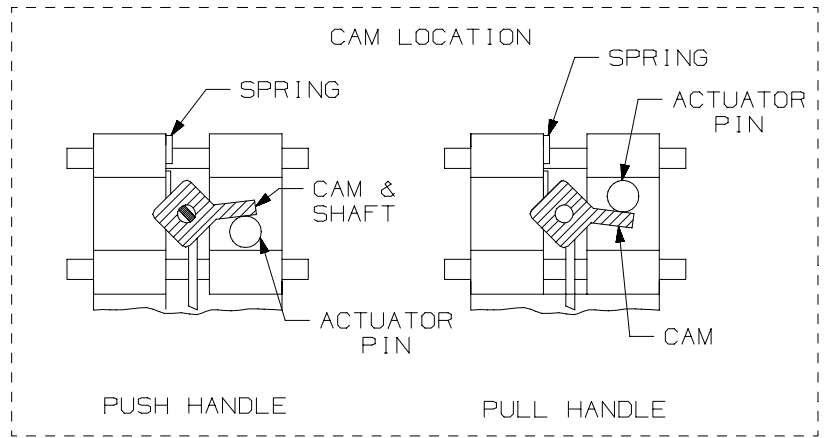
TEMPLATE
NUMBER:

INST.HL6RL_B.PG1

DATE:
05-29-15

③

- A. ATTACH ADAPTER PLATE TO LATCH BOLT ASSEMBLY WITH 8-32 X 3/8" SCREWS.
- B. INSTALL LATCH BOLT ASSEMBLY WITH RADIUS SIDE OF LATCH BOLT ON THE PUSH SIDE OF DOOR.
- C. REMOVE COVERS FROM HANDLE ASSEMBLY.
- D. CHECK THE CAM POSITION ON THE PUSH HANDLE ASSEMBLY (SEE CHART).
- E. INSTALL PUSH HANDLE ASSEMBLY WITH LOCK SHAFT THRU LATCH BOLT ASSEMBLY.
- F. CHECK THE CAM POSITION ON THE PULL HANDLE ASSEMBLY (SEE CHART).
- G. INSTALL PULL HANDLE ASSEMBLY WITH LOCK SHAFT INSERTED INTO CAM.
- H. SECURE WITH SCREWS AND NUTS.
- I. INSTALL COVERS.



SCREW DETAILS			
	QTY.	WOOD	METAL
HANDLE ASSY.	4	10-32 x 2 3/4 PPHMS & NUTS	
COVER	4	6-32 x 1/4 UFPHMS	
LATCH BOLT	2	8 x 3/4 FPHSMS	8-32x3/4 UFPHMS
STANDARD STRIKE	2	8 x 3/4 FPHSMS	8-32x3/4 UFPHMS
ASA STRIKE	2	12 x 3/4 FPHSMS	12-24 x 1/2 UFPHMS
ADAPTER PLATE	2	10 x 1 FPHSMS	10-32 x 1/2 UFPHMS

GLYNN-JOHNSON

**HL6RL PUSH-PULL ROLLER
LATCH CONVERSION
INSTALLATION TEMPLATE**



ALLEGION

NOTE: DIMENSIONS IN () ARE IN MILLIMETERS

TEMPLATE NUMBER:

INST.HL6RL_B.PG2

DATE:

05-29-15