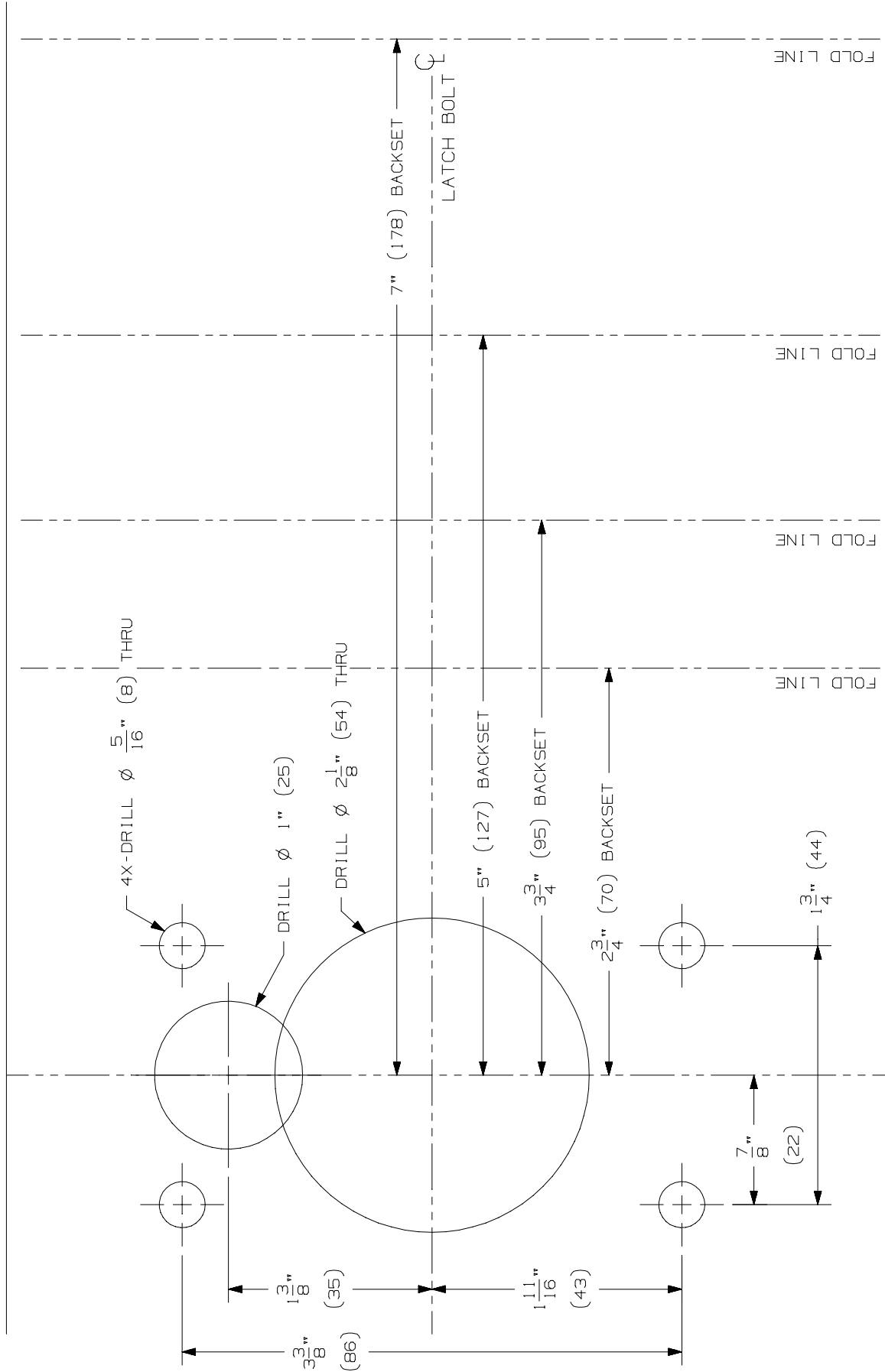


1. SELECT DESIRED BACKSET - 2 3/4", 3 3/4", 5" OR 7"
- (70, 95, 127 OR 178)
2. FOLD ON DOTTED LINE.
3. PLACE FOLD ON LOW EDGE OF BEVEL.
4. LINE UP CENTER LINES.
5. CENTER PUNCH FOR  $\phi$  2 1/8" (54) HOLE, THE  $\phi$  1" (25) HOLE, AND THE FOUR  $\phi$  5/16" (8) MOUNTING HOLES.
6. DRILL HOLES



**GLYNN-JOHNSON**

PL7/PL8 PRIVACY  
VERTICAL MOUNTING TEMPLATE



NOTE: DIMENSIONS IN ( ) ARE IN MILLIMETERS

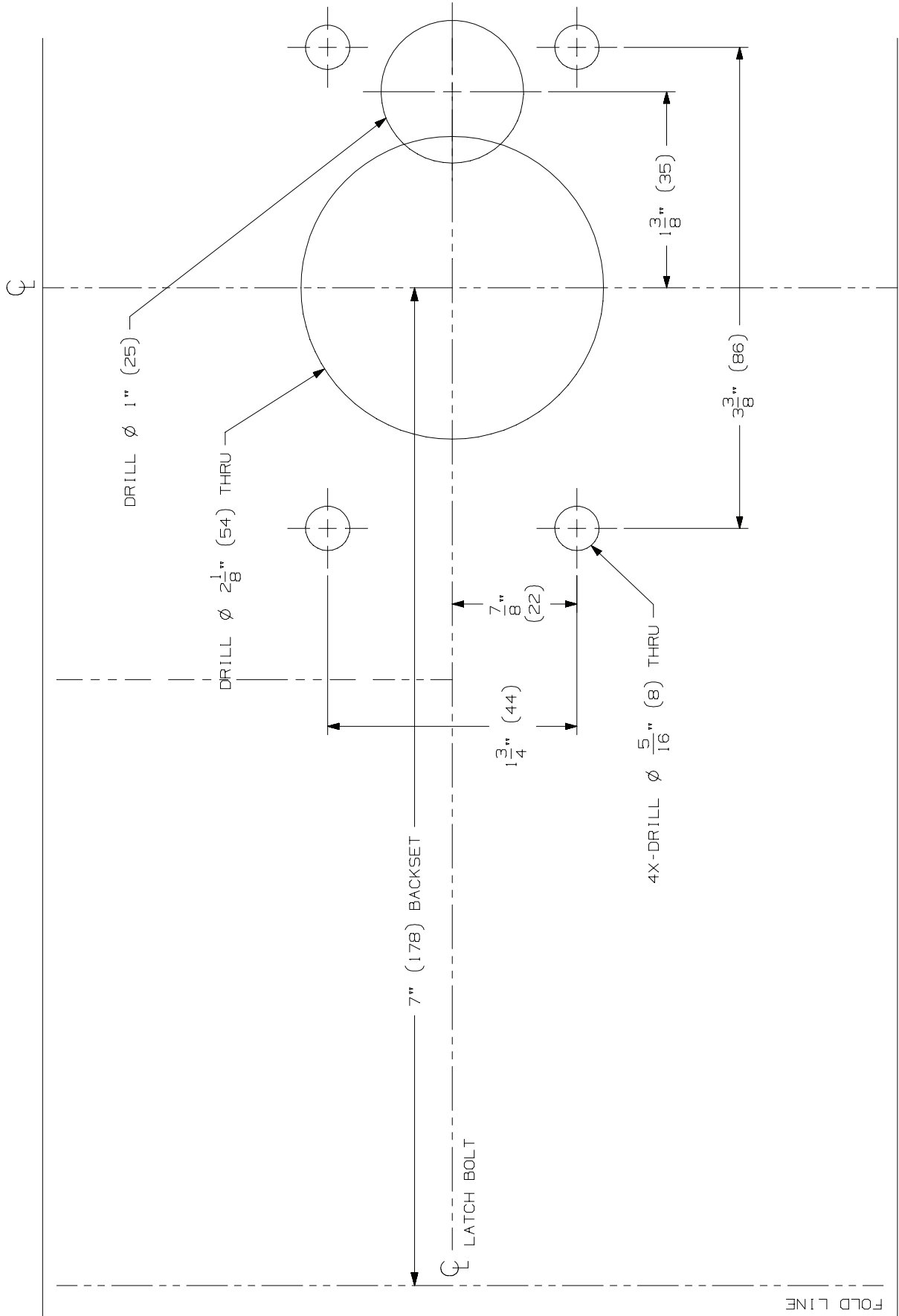
TEMPLATE  
NUMBER:

INST.PLBS\_B.PG1

DATE:  
05-29-15

TEMPLATE TO SCALE. DO NOT COPY OR FAX.

1. FOLD ON DOTTED LINE.
2. PLACE FOLD ON LOW EDGE OF BEVEL.
3. LINE UP CENTER LINES.
4. CENTER PUNCH FOR  $\phi$  2 $\frac{1}{8}$ " (54) HOLE, THE  $\phi$  1" (25) HOLE, AND THE FOUR  $\phi$   $\frac{5}{16}$ " (8) MOUNTING HOLES.
5. DRILL HOLES



TEMPLATE TO SCALE. DO NOT COPY OR FAX.  
 NOTE: ONLY 7" (178) BACKSET AVAILABLE FOR HORIZONTAL MOUNTING.