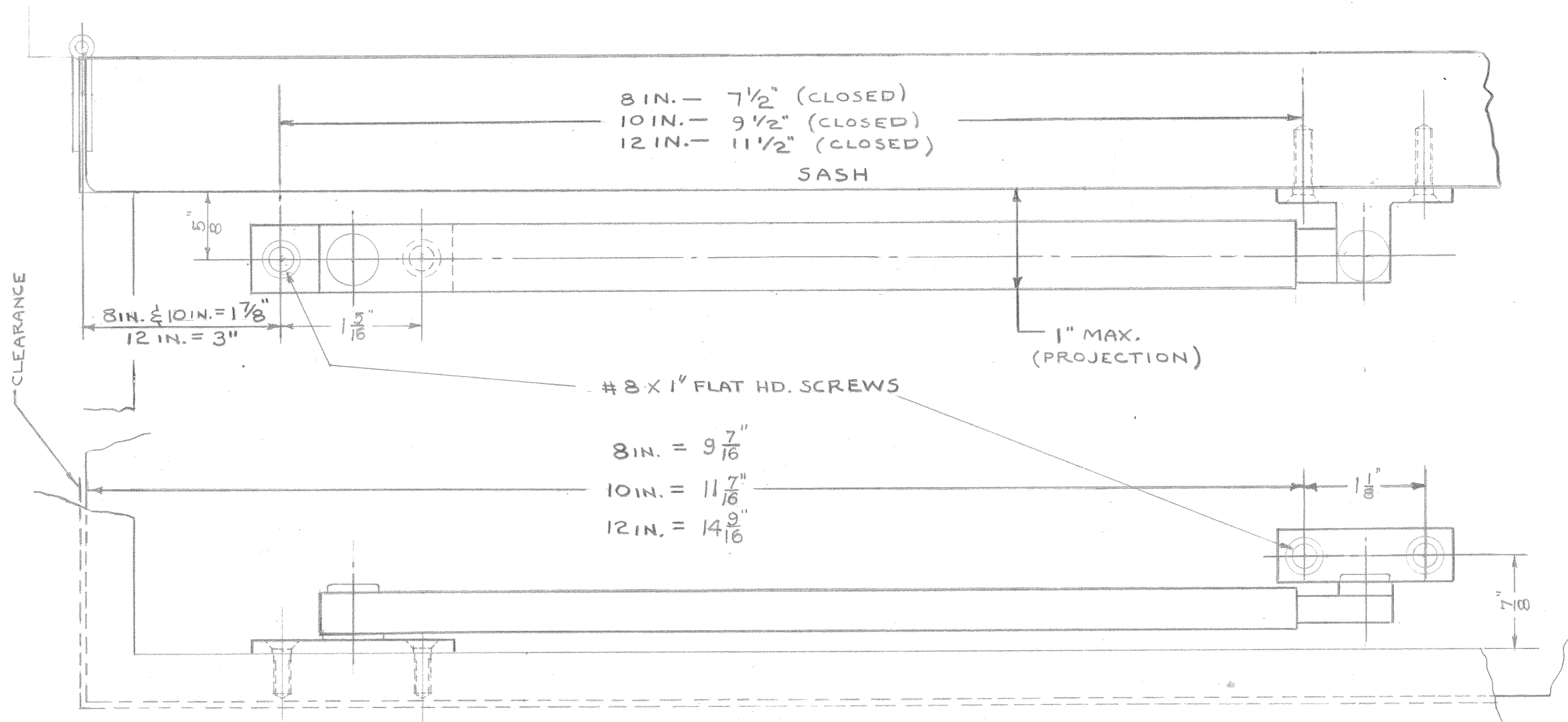


TEMPLATE DRAWING

DWG. NO. 258-B



ADJUSTER SIZE	STROKE	MAX. OPENING
8 IN. ADJUSTER	5 1/8"	105°
10 IN. ADJUSTER	5 1/8"	105°
12 IN. ADJUSTER	6 3/4"	110°

287B (8 IN., 10 IN. & 12 IN.)
 FRICTION CASEMENT ADJUSTER

LETTER	CHANGE	DATE
A	CLOSED OPENED DIMS. CORRECTED	4-4-86 WBI
B	PROJECTION, STROKE & MAX. OPENING ADDED	9-5-86 WBI
C		
F.C.B.	7-28-49	FULL SIZE

IVES DIVISION
 LEIGH PRODUCTS, INC.
 P. O. BOX 1887, NEW HAVEN, CONN. 06508