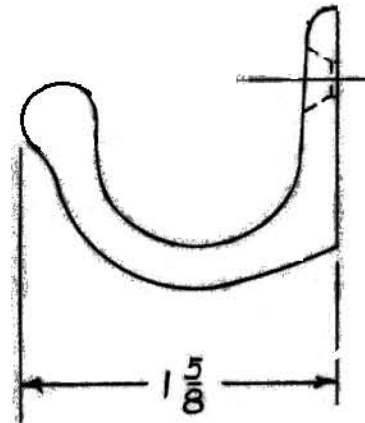
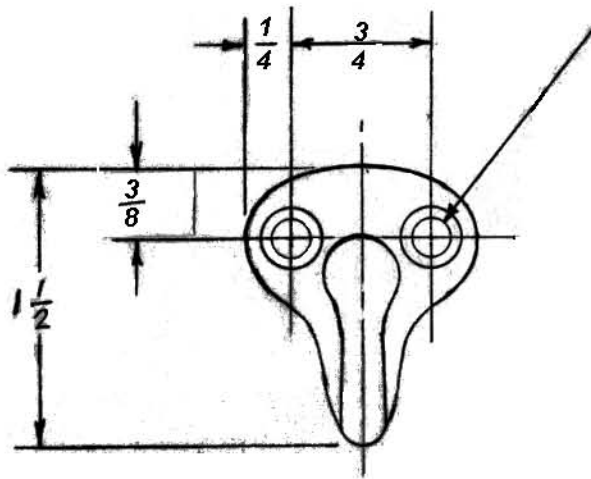


# TEMPLATE DRAWING

DWG. HB-581A-111

DWG # 2321 B  
Rev B , new drawing #

#7 X  $\frac{3}{4}$  O.H. SCREWS



581A WARDROBE HOOK

LETTER	CHANGE	DATE
A		
B	3/4 WAS 23/32, 1/4 WAS 9/32, 3/8 WAS 11/32	3/18/03
C		

FJH 8-19-92 FULL SIZE

IVES DIVISION  
LEIGH PRODUCTS, INC.  
P. O. BOX 1887, NEW HAVEN, CONN. 06508