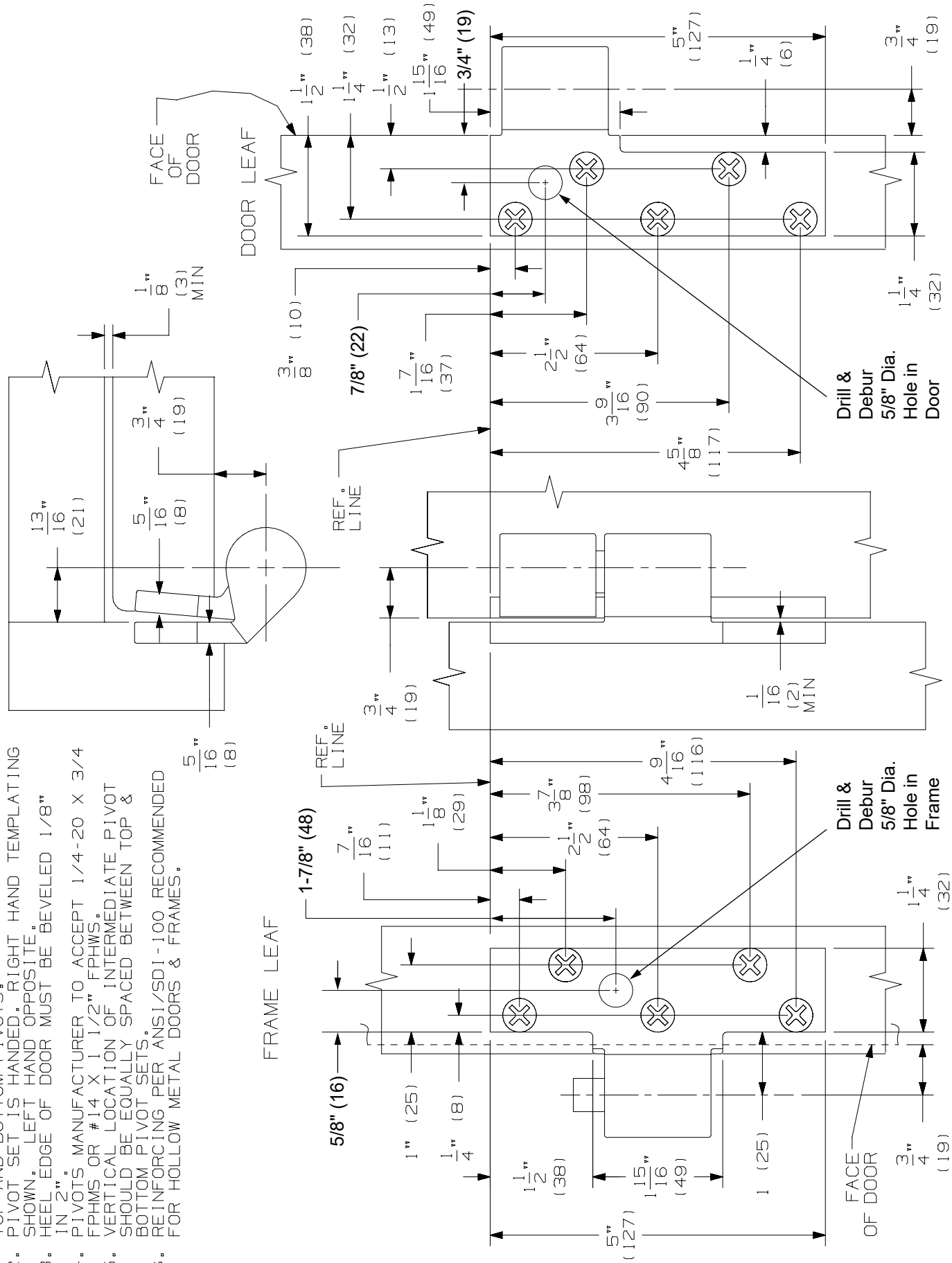


- NOTES:
1. INSTALLER MUST VERIFY THAT CENTERLINE OF INTERMEDIATE PIVOT IS IN LINE WITH TOP AND BOTTOM PIVOTS.
 2. PIVOT SET IS HANDED. RIGHT HAND TEMPLATING SHOWN. LEFT HAND OPPOSITE.
 3. HEEL EDGE OF DOOR MUST BE BEVELED 1/8" IN 2".
 4. PIVOTS MANUFACTURER TO ACCEPT 1/4-20 X 3/4 FPHMS OR #14 X 1 1/2" FPHWS.
 5. VERTICAL LOCATION OF INTERMEDIATE PIVOT SHOULD BE EQUALLY SPACED BETWEEN TOP & BOTTOM PIVOT SETS.
 6. REINFORCING PER ANSI/SDI-100 RECOMMENDED FOR HOLLOW METAL DOORS & FRAMES.

RIGHT HAND DOOR & PIVOT SHOWN. LEFT HAND OPPOSITE.



7230F POWER TRANSFER INTERMEDIATE PIVOT USED IN PIVOTS SETS 7230F & 7237F



NOTE: DIMENSIONS IN () ARE IN MILLIMETERS

TEMPLATE NUMBER: INST.7230I_C

© 2023 Allegion INST_7230I Rev. 04/23-c