



ANT400-REM

AD Series Remote Antennas for Wireless System



Note: Images not to scale

Overview

The Schlage ANT400-REM optional remote antennas are designed for use with the AD-400 Series devices. They increase installation flexibility of wireless products, extend the range of wireless communication in certain directions and expand the range of applications of AD Series solution.

A remote antenna is used to improve signal communication strength for wireless communications through an obstruction. A typical application would be when a remote device down a hallway requires a few extra feet of signal strength to reach the PIM400, which is sometimes located around a corner or behind a wire mesh or thick brick construction material.

When increased wireless communication range is required, the ANT400-REM-I/O+6dB model can up to double the range in the line of sight that it is aimed. This “gain antenna” increases the signal strength by focusing the energy in a single direction instead of broadcasting in all directions.

AD Series remote antennas are important components to environments with limited installation flexibility. The connected PIM400 can be up to 15 feet away from the remote antenna via the included coaxial cable. The outdoor rated antennas create new applications that allow a PIM400 to communicate to external remote access points such as gates or remote buildings without the need to trench cables.

Allegion, the Allegion logo, Schlage and the Schlage logo are trademarks of Allegion plc, its subsidiaries and/or affiliates in the United States and other countries. All other trademarks are the property of their respective owners.

Features & Benefits

- Use with PIM400 and WRI400
- Increase installation flexibility
- Optimize installation location
- Extend communication range with high-gain antenna
- Directional, bi-directional or omni-directional
- Indoor and outdoor options

Included in:

- ECK400 Wireless Elevator Kit
- GCK400 Wireless Gate Control Kit

CYBERSECURITY

Learn about Allegion's commitment

Remote Antenna Models			
Model			Description
ANT400-REM-I/O	Type	Quasi omni-directional, unity gain	Intended use: an omni-directional flat-panel antenna for use with indoor or outdoor applications. To be mounted vertically on a wall or post. Included: antenna, 15 ft coax cable, coax whip, articulated wall/post mounting bracket. Requires grounding kit (MGB+MCA5) for outdoor installations.
	Communication range extension	15 ft due to cable length	
	Location	Indoor/outdoor	
	Dimensions (HxWxD)	9.1" x 8.4" x 1.2"	
	Weight:	0.5 kg	
	Temperature range:	-40°C to +65°C (-40°F to +150°F)	
ANT400-REM-I/O+6dB	Type	Directional, high gain	Intended use: a high gain, directional flat-panel antenna for use with indoor or outdoor applications. To be mounted vertically on a wall or post. Included: antenna, 15 ft coax cable, coax whip and articulated wall/post mounting bracket. Requires grounding kit (MGB+MCA5) for outdoor installations.
	Communication range extension	Up to 2x the original range without antenna (single direction), plus 15 ft due to cable length. Up to 200' in typical building construction or up to 2000' clear line of sight.	
	Location	Indoor/outdoor	
	Dimensions (HxWxD)	9.1" x 8.4" x 1.2"	
	Weight:	0.5 kg	
	Temperature range:	-40°C to +65°C (-40°F to +150°F)	
ANT400-REM-CEILING	Type	Omni-directional, unity gain	Intended use: an omni-directional antenna for use with indoor applications. To be mounted horizontally on ceiling. Included: antenna, 15 ft coax cable, and coax whip.
	Communication range extension	15 ft due to cable length. Up to 200' in typical building construction or up to 1000' clear line of sight.	
	Location	Indoor/outdoor	
	Dimensions (HxWxD)	9.1" x 8.4" x 1.2"	
	Weight:	0.5 kg	
	Temperature range:	-40°C to +65°C (-40°F to +150°F)	
ANT400-REM-HALL	Type	Bi-directional, unity gain	Intended use: an bi-directional antenna for use with indoor applications. To be mounted on wall or ceiling. Included: antenna, 15 ft coax cable, and coax whip.
	Communication range extension	15 ft due to cable length. Up to 200' in typical building construction or up to 1000' clear line of sight.	
	Location	Indoor	
	Dimensions (HxWxD)	7.2" x 3.9" x 4.9"	
	Weight:	0.24 kg	
	Temperature range:	-10°C to + 65°C (14° F to + 150° F)	

Available through one of our GSA schedule 84 approved distributors

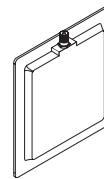
Accessories

MGB+MCA5 grounding kit

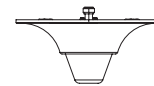
- The National Electrical Code (NEC) requires that any outdoor antenna be properly grounded
- The Schlage remote antenna grounding kit is compatible with all models of remote antenna

Certification

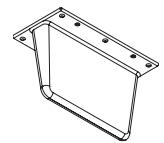
FCC Part 15



ANT400-REM-I/O¹
ANT400-REM-I/O+6dB¹



ANT400-REM-CEILING¹



ANT400-REM-HALL¹

1. These are the only remote antennas that have been approved by FCC for use with Allegion AD Series 900MHz communication modules. Any other antenna with an Allegion AD Series 900MHz communication modules would be in violation of FCC regulation.