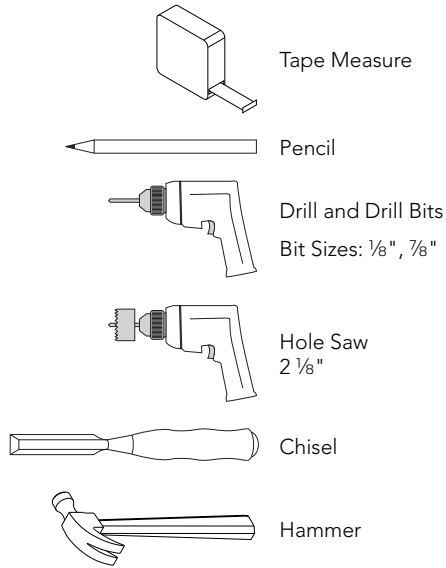


Schlage knobs and levers



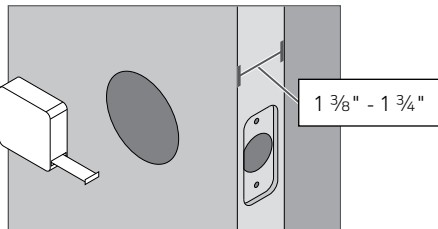
Door Preparation Instructions for Door with Existing Holes

Tools Needed



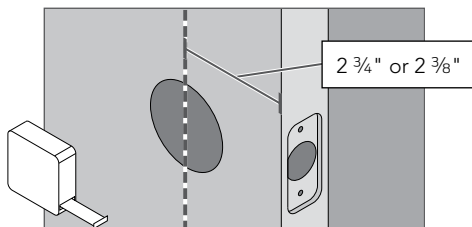
1 Measure door thickness.

If the door is thinner than $1\frac{3}{8}$ " or thicker than $1\frac{3}{4}$ ", then the lock will not fit properly on the door.



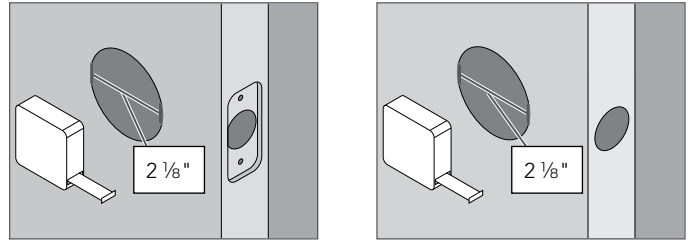
2 Measure the backset.

If existing backset is not $2\frac{3}{8}$ " or $2\frac{3}{4}$ ", then the lock will not fit properly on the door.

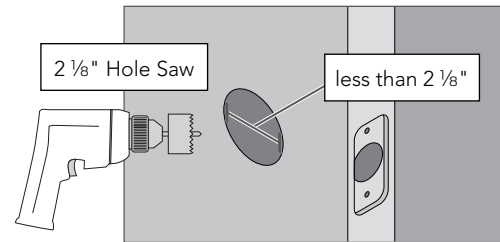


3 Measure the hole sizes.

3a If hole sizes are larger than those shown, then the lock will not fit properly on the door. If hole sizes are smaller than those shown, see step 3b.



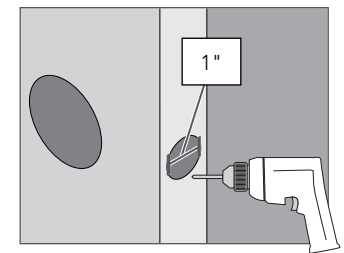
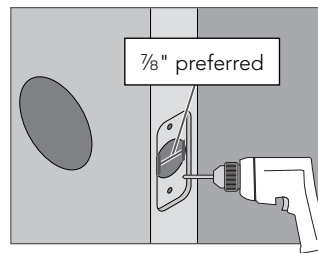
3b If necessary, enlarge hole in door face.



3c If latch does not fit, enlarge hole in door edge.

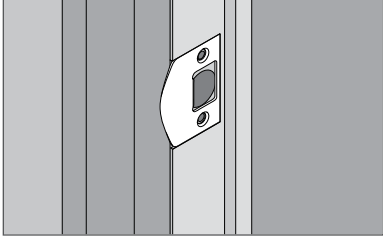
Mortise faceplate

Circular drive-in faceplate

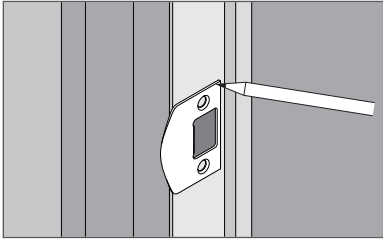


4 Check the door jamb.

- 4a Place new latch strike against the door jamb. If it does not fit properly, see steps 4b and 4c .



- 4b If correction is necessary, trace the faceplate and mark holes.



- 4c If necessary, use chisel, hammer and drill to correct door jamb preparation.

- ① Cut the mortise so the strike extends all the way to the edge of the jamb to allow for the latch lip.

