

SCHLAGE

CS210 Series

Service manual



Contents

- 4 Introduction
- 4 Lock assembly drawing
 - 5 CS210-B500
 - 6 CS210-B60
- 7 Levers
 - 7 Lever designs
- 9 Cylinder options
- 10 Latches
- 11 Strikes
 - 11 Combo strikes
 - 11 Deadbolt strikes and strike reinforcement
 - 11 Deadlatch strikes
- 12 Parts
 - 12 Trim and lock components
 - 13 Screws and screw packs
- 14 Center-to-center conversion
- 15 Handing
- 16 Finishes

Introduction

This manual contains a complete listing of CS210 Series (Grade 2) interconnected lock parts and assemblies manufactured by the Schlage Lock Company. This manual lists components of CS210 Series locks manufactured after December 2010.

The CS210 Series features two outside deadbolt options, B500 (commercial spin ring) or B60 (residential spin ring), and two inside escutcheon design options (Camelot (CAM) or Plymouth (PLY)). The adjustable escutcheon plate allows the lock to support either 4" or 5½" door preparation.

Exploded views of the lock trim assemblies are provided with an accompanying chart to identify parts for replacement purposes. In addition, this manual provides lock trim ordering procedures and general cylinder information for the CS210 Series interconnected locks.

Standard Features*

Certifications	ANSI A156.12-2013, BHMA Grade 2 operational and security. UL Listed for 3-hour fire door. With SFIC interchangeable core cylinders: Grade 3 security.
Deadbolt	1 x 2¼", dual option faceplate, (square corner standard, round corner included in package), 1" housing diameter, 1" throw.
Latchbolt	1" x 2¼" dual option faceplate (square corner standard, round corner included in package). 1" edge bore required.
Strike	1⅞" x 2¾", Square corner, box (deadbolt) 1⅝" x 2¼", 1⅞" Square corner, full lip, no box (deadlatch)
Backset	Adjustable backset, 2⅜" or 2¾"
Cylinder	6-Pin solid brass, keyed 6-pin, S123 keyway, keyed different (KD)**
Center-to-center	Fits 4" or 5½" (factory default) center to center door preparation.***
Door Range	1¾" to 2" (1⅜" available when specified)
Keys	Two nickel silver cut keys per lock, 6-pin, S123 section

* Locks are furnished with standard features unless otherwise specified.

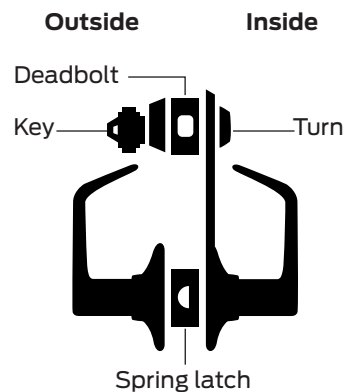
** Items specified in C keyway will be furnished with cylinder keyed 5-pin and with 5-pin keys unless otherwise specified.

*** See page 15 for center-to-center conversion instructions.

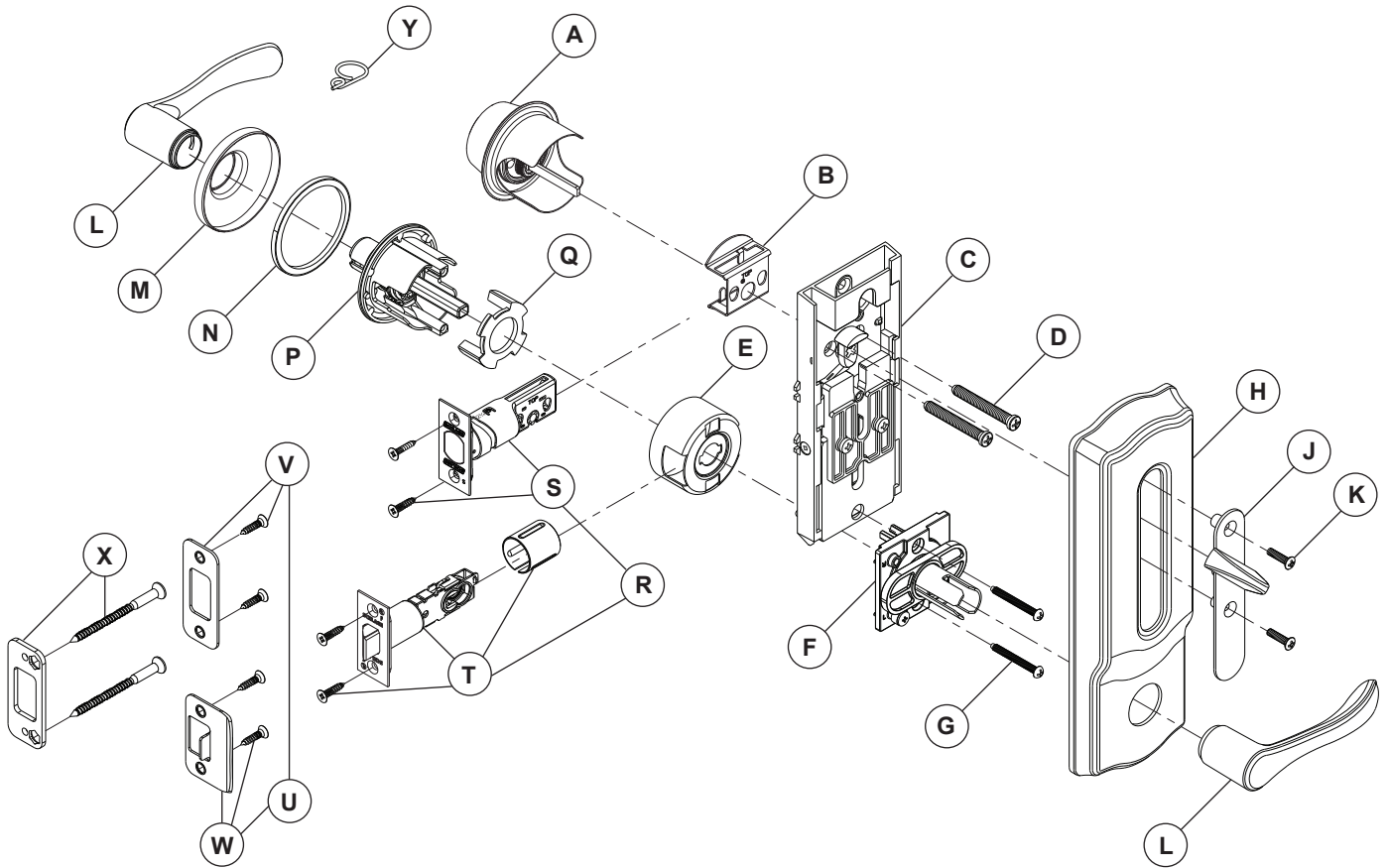
Lock assembly drawing

CS210-B500 Deadbolt, entrance, single locking with commercial spin ring

Deadbolt is operated by key from outside or by turn from inside. Bolt automatically deadlocks when fully thrown. Latch is retracted by lever from either side. Turning the inside lever retracts deadbolt and latch simultaneously for immediate exit.



CS210-B500



Letter	Description	Part No.
A* ◇	Housing assembly, outside B500	S206-501
B	Fire cup	B520-657
C	Interconnect assembly	S206-502
D	Screws, mounting deadbolt	B600-101
E	UL cup	S605-206
F	Inside chassis	F206-494
G	Screws, mounting	F506-278
H**	Escutcheon, Camelot design (shown)	F506-864-CAM
	Escutcheon, Plymouth design	F506-864-PLY
J*	Escutcheon thumbturn plate assembly	F206-493
K*	Screws, escutcheon plate	B520-621
L**	Levers kit (2 levers)	06-242
M**	Rose, Plymouth design	08-029-PLY
	Rose, Saturn design	08-029-SAT
N	Reinforcing ring, rose	A501-945

Letter	Description	Part No.
P	Outside chassis	F206-496
Q	Plate, handing	F506-867
R*	Deadbolt and spring latch combination, 2 ³ / ₈ " or 2 ³ / ₄ " backset, dual option, 1" x 2 ¹ / ₄ " standard (square corner standard, round corner included in package)	12-339
S*	Deadbolt, 1" x 2 ¹ / ₄ " standard (square corner standard, round corner included in package), 2 ³ / ₈ " or 2 ³ / ₄ " backset	12-340
T*	Spring latch, 1" x 2 ¹ / ₄ " standard (square corner standard, round corner included in package), 2 ³ / ₈ " or 2 ³ / ₄ " backset	16-260
U*	Strike, combination	10-121
V*	Strike, deadbolt	10-094
W*	Strike, latch	10-026
X	Strike reinforcer	37-016
Y	Pin wrench	N523-108

* Specify finish.

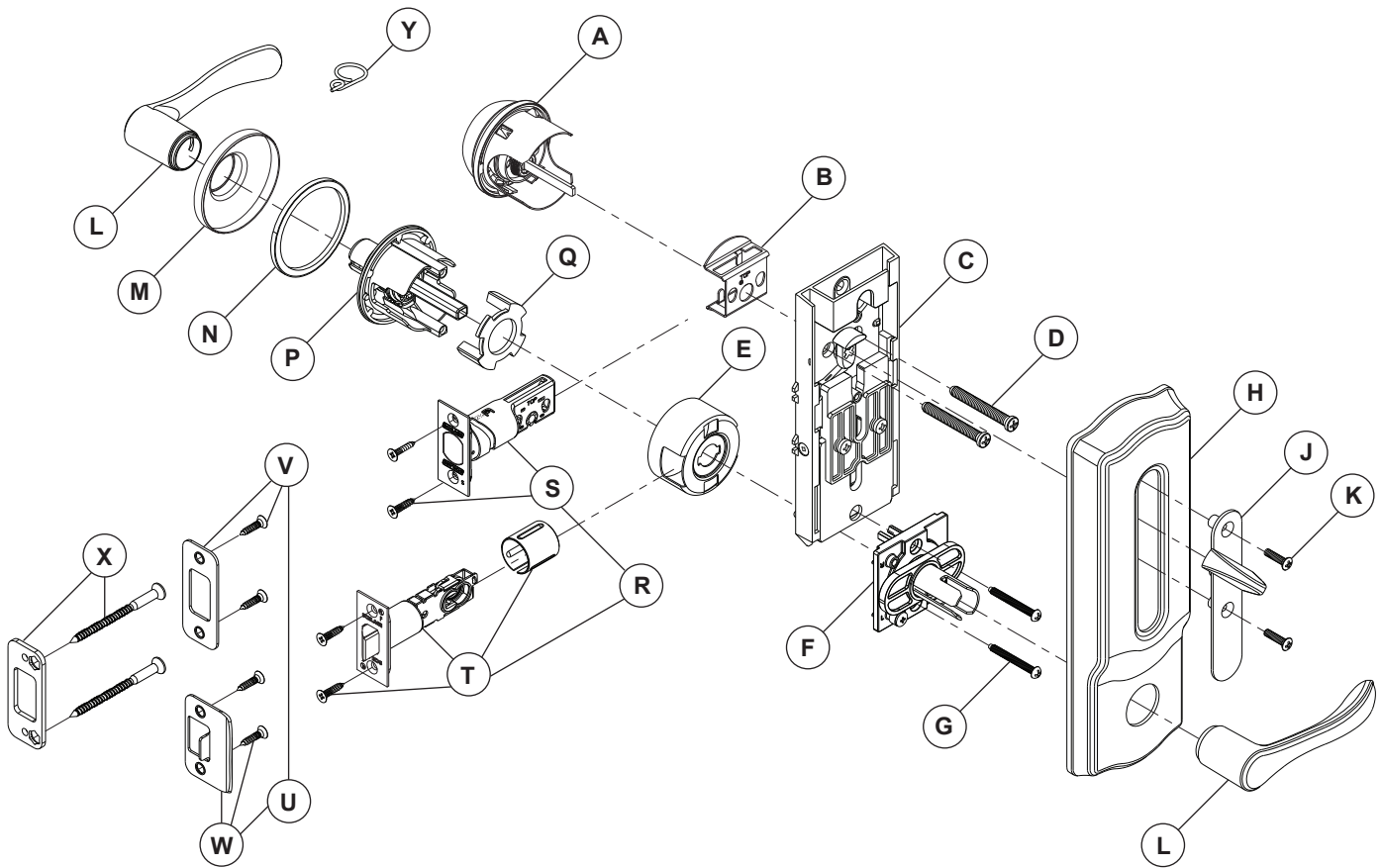
** Specify design and finish.

◇ See **page 12** for list of interchangeable core and thin door housing assemblies.

Notes: See **page 7** for details of all available lever designs.

For handed lever designs, one right-handed and one left-handed lever are supplied.

CS210-B60



Letter	Description	Part No.
A* ◊	Housing assembly, outside B60	B300-058
B	Fire cup	B520-657
C	Interconnect assembly	S206-502
D	Screws, mounting deadbolt	B600-101
E	UL cup	S605-206
F	Inside chassis	F206-494
G	Screws, mounting	F506-278
H**	Escutcheon, Camelot design (shown)	F506-864-CAM
	Escutcheon, Plymouth design	F506-864-PLY
J*	Escutcheon thumbturn plate assembly	F206-493
K*	Screws, escutcheon plate	B520-621
L**	Levers kit (2 levers)	06-242
M**	Rose, Plymouth design	08-029-PLY
	Rose, Saturn design	08-029-SAT
N	Reinforcing ring, rose	A501-945

Letter	Description	Part No.
P	Outside chassis	F206-496
Q	Plate, handing	F506-867
R*	Deadbolt and spring latch combination, 2 ³ / ₈ " or 2 ³ / ₄ " backset, dual option, 1" x 2 ¹ / ₄ " standard (square corner standard, round corner included in package)	12-339
S*	Deadbolt, 1" x 2 ¹ / ₄ " standard (square corner standard, round corner included in package)	12-340
T*	Spring latch, 1" x 2 ¹ / ₄ " standard (square corner standard, round corner included in package)	16-260
U*	Strike, combination	10-121
V*	Strike, deadbolt	10-094
W*	Strike, latch	10-026
X	Strike reinforcer	37-016
Y	Pin wrench	N523-108

* Specify finish.

** Specify design and finish.

◊ See page 12 for list of interchangeable core and thin door housing assemblies.

Notes: See page 7 for details of all available lever designs.

For handed lever designs, one right-handed and one left-handed lever are supplied.

Levers

Levers

Split lever designs and finishes are available. Please see the Schlage Commercial Price Book for details.

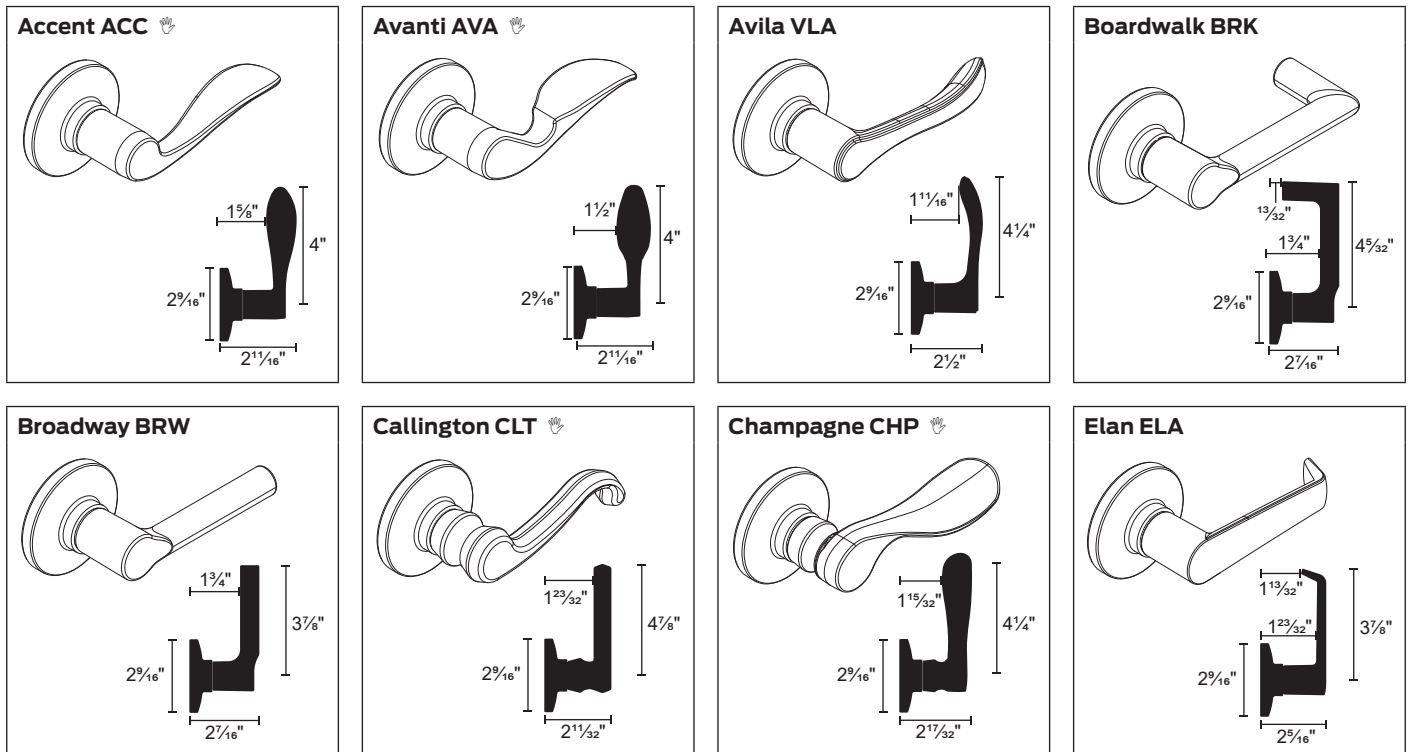
All levers are available in the following finishes:

- 605 Bright Brass
- 609 Antique Brass
- 619 Satin Nickel
- 622 Matte Black
- 625 Bright Chrome
- 626 Satin Chrome
- 643e Aged Bronze

Lever designs

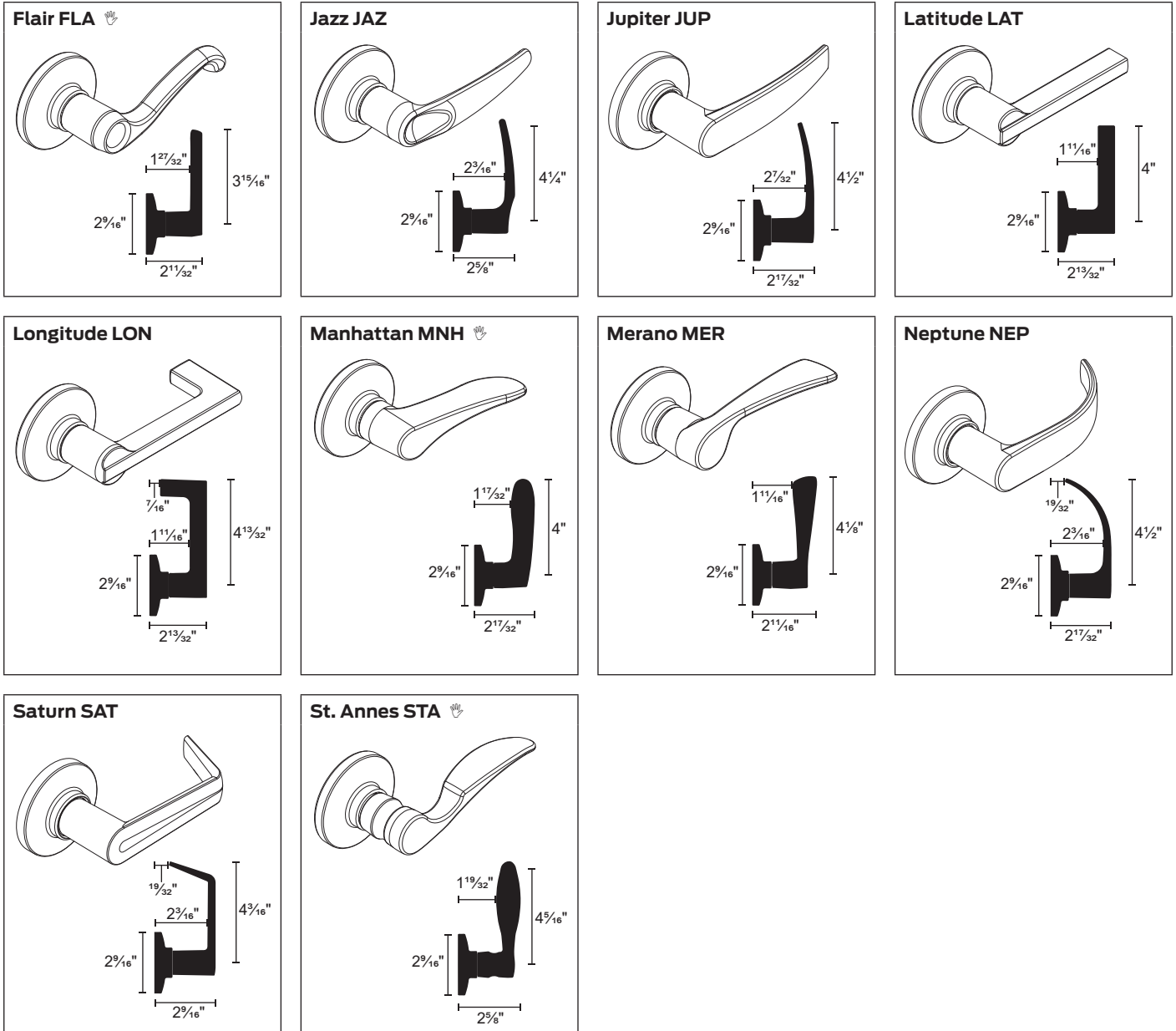
☞ indicates handing must be specified.

Boardwalk and Longitude levers comply with California State code for return within 1/2" of door face.



Note: The rose-lever combination must be examined when changing levers or roses. Crimp-on roses were transitioned to snap-on roses in August 2015. Snap-on roses can be identified by retention dimples at the base of the rose. If not compatible, an outside chassis with crimp-on rose may be updated with the following parts: 06-242, levers; 08-029 rose; A501-945 reinforcement ring; F206-496 outside chassis assembly.

Levers



Note: The rose-lever combination must be examined when changing levers or roses. Crimp-on roses were transitioned to snap-on roses in August 2015. Snap-on roses can be identified by retention dimples at the base of the rose. If not compatible, an outside chassis with crimp-on rose may be updated with the following parts: 06-242, levers; 08-029 rose; A501-945 reinforcement ring; F206-496 outside chassis assembly.

Cylinder options

Cylinder options

Locks are furnished standard with P6 cylinder (conventional 6-pin) with open keyway. Optional conventional, FSIC, and SFIC cylinders are available. See the Schlage Commercial Price Book for complete cylinder and keying details.

Note: SFIC cylinders are not available with B60 (residential) cylinder housing assembly.

Description	Specify
Conventional 6-pin cylinder (standard)	P6
Conventional 5-pin cylinder	P
Less conventional cylinder	L
Everest 29™ SL conventional cylinder, 7-pin	Z
Everest 29 SL FSIC (full size interchangeable core)	R
Construction core FSIC	T
Everest 29 SL FSIC, 7-pin	M
Less FSIC cylinder	J
Everest 29 SFIC (small format interchangeable core)	G
Refundable construction SFIC	H
Disposable construction SFIC	BDC
Less SFIC cylinder	B

* Restricted keyways include Everest 29 R and T keyways, Everest B and D keyways, and classic (reverse/quad/numbered) keyways.

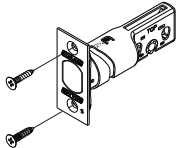
Latches

Specify finish

12-339 dual option, standard
2³/₈" or 2³/₄" backset, (one each deadbolt and spring latch or deadlatch)

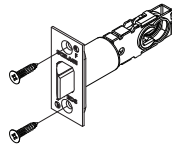
12-340 Deadbolt

1" x 2¹/₄" faceplate, square corner, (round corner included)
1" housing diameter, 1" throw



16-260 Spring latch

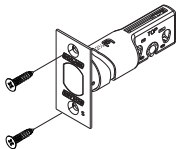
1" x 2¹/₄" faceplate, square corner, (round corner included)



16-483 combo latch, optional
2³/₈" or 2³/₄" backset (one each deadbolt and deadlatch)

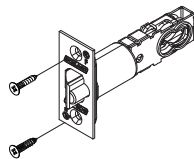
12-291 Deadbolt

1¹/₈" x 2¹/₄" square corner, 1" housing diameter



16-228 Deadlatch

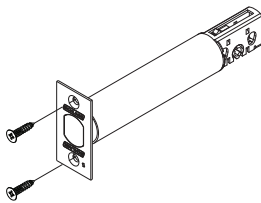
1¹/₈" x 2¹/₄" square corner



16-484 combo latch, optional
5" backset (one each deadbolt and deadlatch) *

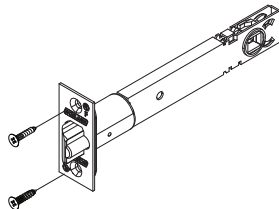
12-633 Deadbolt

1¹/₈" x 2¹/₄" square corner, 1" housing diameter



16-132 Deadlatch

1¹/₈" x 2¹/₄" square corner



Strikes

Strikes

Combo strikes

One each deadbolt strike and deadlatch strike

Strike combo number	Deadbolt strike	Deadlatch strike
10-109	10-094	10-001
10-121 (standard)	10-094	10-026
10-122	10-116	10-027

Strike combo number	Deadbolt strike	Deadlatch strike
10-123	10-092	10-027
10-124	10-095	10-026

Deadbolt strikes and strike reinforcement

10-094, standard
 1 1/8" x 2 3/4" Square corner, no lip

10-092
 1 5/8" x 2 1/4", 1/4" Radius round corner, full lip, 1/8" lip length, no box

10-095
 1 5/8" x 2 1/4", Square corner, full lip, 1/8" lip length, no box

10-116
 1 1/8" x 2 3/4" Round corner, no lip
 Includes 3/4" combo screws (2) and 3" wood screws (2)

37-016*
 Strike reinforcement for use with 10-094 or 10-116 strikes

* Not for use with strike box.

Deadlatch strikes

10-001
 1/8" x 2 3/4" Square corner T-strike, box

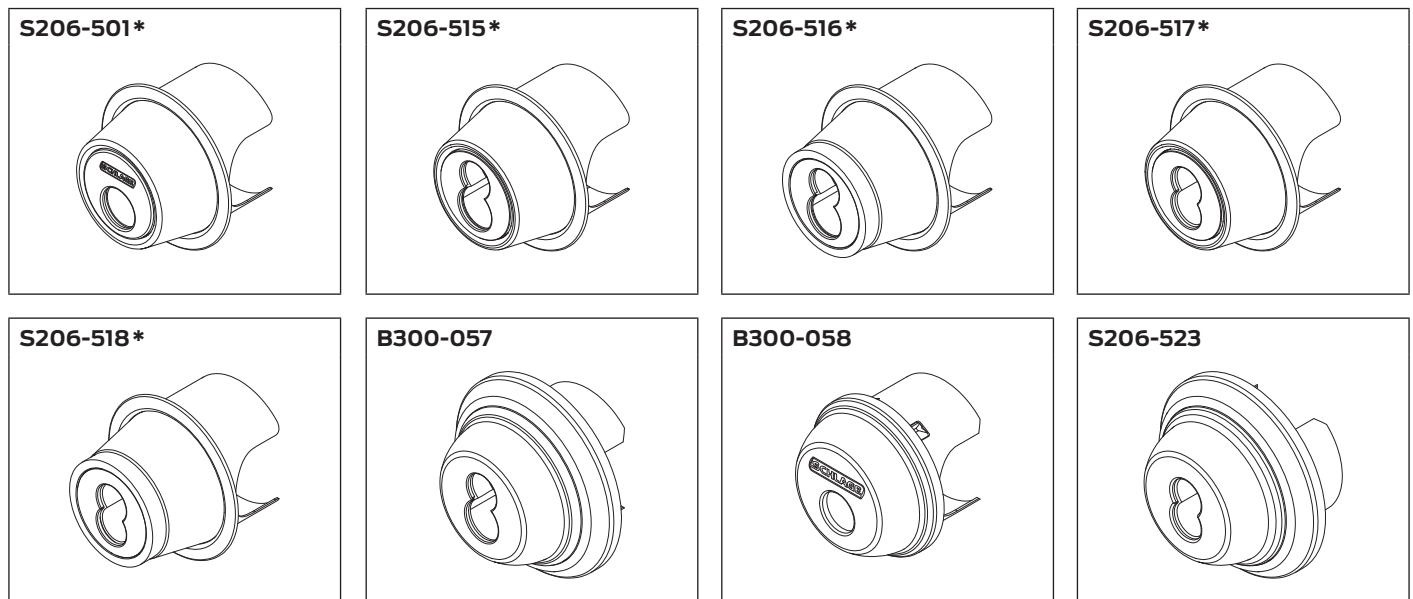
10-026, standard
 1 5/8" x 2 1/4", square corner, full lip, no box

10-027
 1/4" Radius round corner, full lip, 1/8" lip length, no box, 1 5/8" x 2 1/4"

Parts

Trim and lock components

Part number	Function	Description
S206-501 *	B500	Deadbolt cylinder housing assembly
S206-515 *	B500	Deadbolt FSIC cylinder housing assembly
S206-516 *	B500	Deadbolt FSIC cylinder housing assembly, thin door
S206-517 *	B500	Deadbolt SFIC cylinder housing assembly
S206-518 *	B500	Deadbolt SFIC cylinder housing assembly, thin door
B300-058	B60	Deadbolt cylinder housing assembly
B300-057	B60	Deadbolt FSIC cylinder housing assembly
S206-523	B60	Deadbolt SFIC cylinder housing assembly
22-093	B500	Deadbolt cylinder core
23-030	B60, B500	Deadbolt FSIC cylinder core
80-037	B60, B500	Deadbolt SFIC cylinder core
F506-864 *	B60, B500	Escutcheon
F206-493 *	B60, B500	Escutcheon plate assembly, thumbturn
08-029 *	B60, B500	Rose (specify PLY or SAT design) (see note below)
06-242 *	B60, B500	Levers, qty 2 (see note below)
S206-502	B60, B500	Interconnect assembly
F206-494	B60, B500	Chassis assembly, inside
F206-496	B60, B500	Chassis assembly, outside
F506-867	B60, B500	Handing plate
F506-878	B60, B500	Cylinder driver bar
S506-894	B60, B500	Cylinder driver bar, FSIC
S502-999	B60, B500	Cylinder driver bar, SFIC



* Specify finish.

Note: The rose-lever combination must be examined when changing levers or roses. Crimp-on roses were transitioned to snap-on roses in August 2015. Snap-on roses can be identified by retention dimples at the base of the rose. If not compatible, an outside chassis with crimp-on rose may be updated with the following parts: 06-242, levers; 08-029 rose; A501-945 reinforcement ring; F206-496 outside chassis assembly.

Parts

Screws and screw packs

Part number	Description	Contents
B202-578 *	Latch and strike screws	(4) C603-897, 3/4" wood screw/machine screw
S206-504 *	Chassis and trim screws	(2) each: B600-100, 1 ⁵ / ₁₆ " mounting screw B520-621, 3/4" escutcheon machine screw F506-278, 1 ¹ / ₂ " machine screw
S206-505	Chassis and trim screws, thick door	(2) each: B600-101, 2 ⁷ / ₆₄ " mounting screw B520-621, 3/4" escutcheon machine screw F506-278, 1 ¹ / ₂ " machine screw
B502-873	Strike reinforcement screws (order in multiples of 100)	#12 x 3" flat head Phillips wood screws

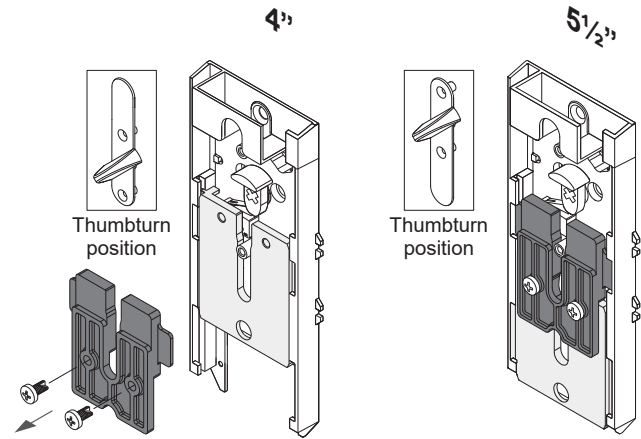
* Specify finish.

Center-to-center conversion

Center-to-center conversion

Conversion of center-to-center dimension (thumbturn to lever) is made by a modification to the interconnect assembly.

- For 4" center-to-center door preparation, remove two screws and the plate as shown. Position the thumbturn assembly with the thumbturn toward the bottom of the thumbturn escutcheon plate.
- For 5½" preparation, keep the plate in place with two screws. Position the thumbturn assembly with the thumbturn toward the top of the thumbturn escutcheon plate.



Handing

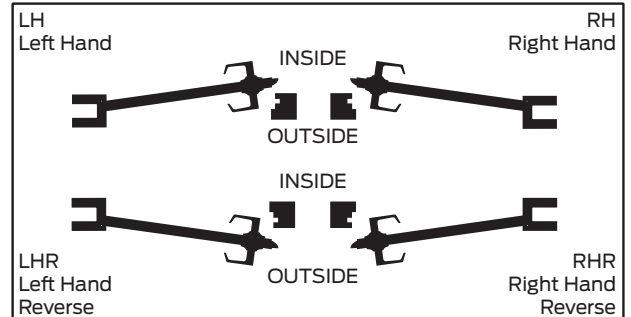
Handing

Lock handing is important to ensure that the correct side of the door is secure, the levers are oriented properly, and that the door closes properly.

There are 4 different door handings: LH (left hand), RH (right hand), LHR (left hand reverse), and RHR (right hand reverse).

To determine handing:

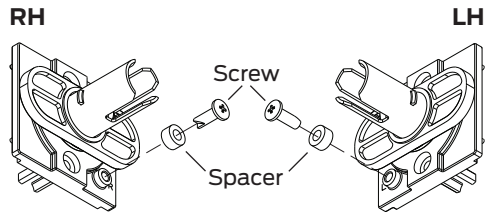
1. Stand on the secure side of the door. (The secure side is usually the outside.)
2. Note the location of the hinges.
3. If the hinges are on the left, it is a left hand door, or if the hinges are on the right it is a right hand door.
4. Note if the door swings away from you or toward you.
5. If the door swings away from you it is a standard swing door, or if the door swings toward you it is a reverse door.



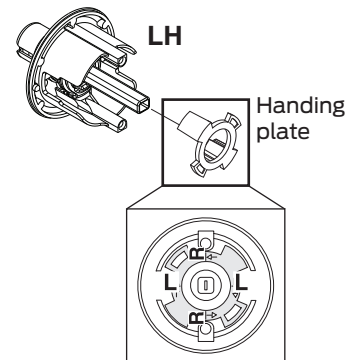
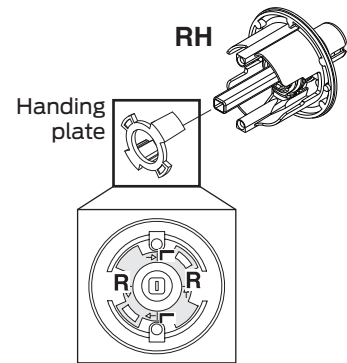
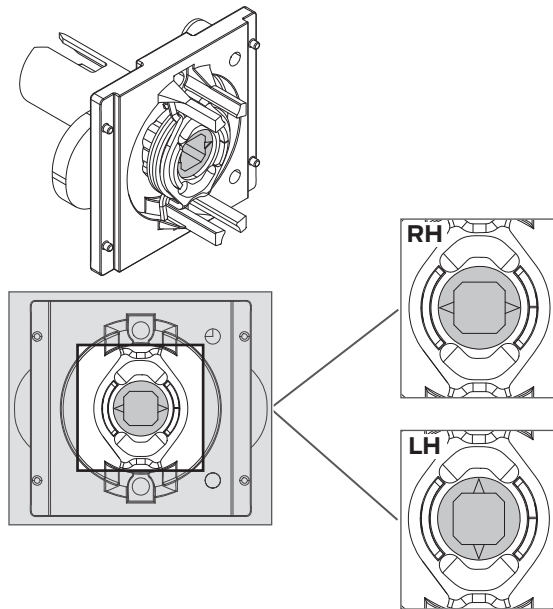
To change handing:

1. Move the screw and spacer to the appropriate hole on the **inside** chassis assembly.
3. Position the handing plate for the door handing as shown.

Do not use power screwdriver.



2. Rotate the internal cam of the **inside** chassis assembly. The arrows should be horizontal for right hand doors and vertical for left hand doors.



Finishes

Finishes

Schlage CS210 Series lock products are available in a range of durable, top-quality finishes.

The longevity and preservation of the finish appearance is determined by base metal and finishing process. Clear protective coating or other organic finishing applications may require different methods of cleaning and care. For example, non-clear coated finishes should not be cleaned with any soaps or solvents. Organically coated surfaces should periodically be cleaned with a mild non-abrasive soap and be buffed lightly with a clean cloth. The type of base metal and finished techniques must be considered when applying any cleaning or preservative method.

Finishes are coded according to the Builders Hardware Manufacturers Association (BHMA). The nearest old U.S. equivalent code designations are shown in parentheses.

Code	Description
605 (US 3)	Bright brass
609 (US 5)	Satin brass, blackened
619 (US 15)	Satin nickel
622 (US 19)	Matte black

Code	Description
625 (US 26)	Bright chromium plated
626 (US 26D)	Satin chromium plated
643e (US 11)	Aged bronze

About Allegion

Allegion (NYSE: ALLE) creates peace of mind by pioneering safety and security. As a \$2 billion provider of security solutions for homes and businesses, Allegion employs more than 8,000 people and sells products in more than 120 countries across the world. Allegion comprises 27 global brands, including strategic brands CISA®, Interflex®, LCN®, Schlage® and Von Duprin®.

For more, visit www.allegion.com.

aptiQ ■ LCN ■ **SCHLAGE** ■ STEELCRAFT ■ VON DUPRIN