



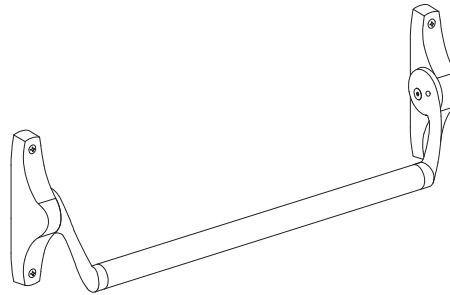
911066-00

Concealed Vertical Rod Exit Device  
for Metal Doors

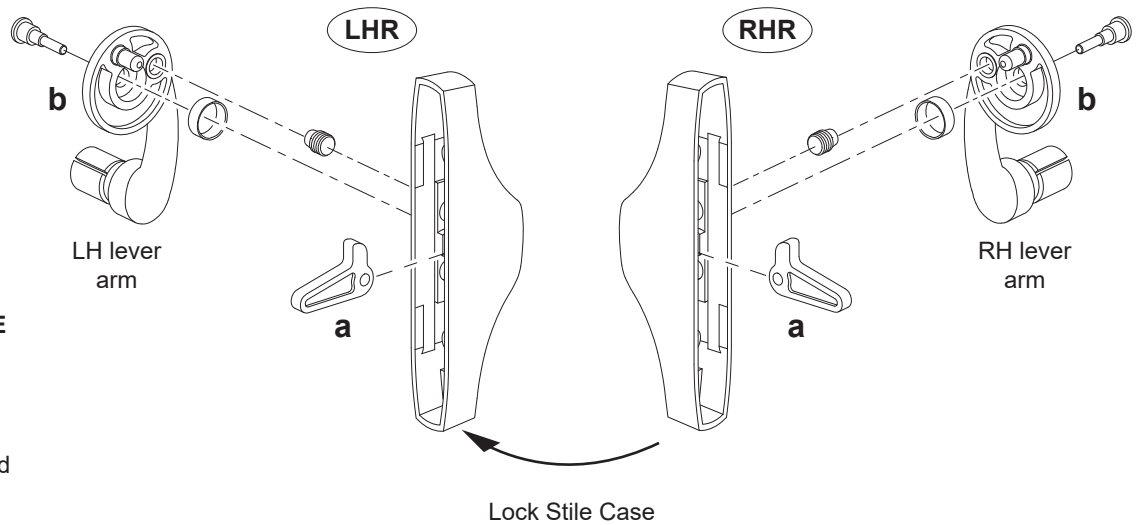
# 5547EO, 5547DT, 5547L, 5547NL, & 5547TL

# VON DUPRIN®

Installation Instructions



**1** Check handing of device. Reverse if necessary.

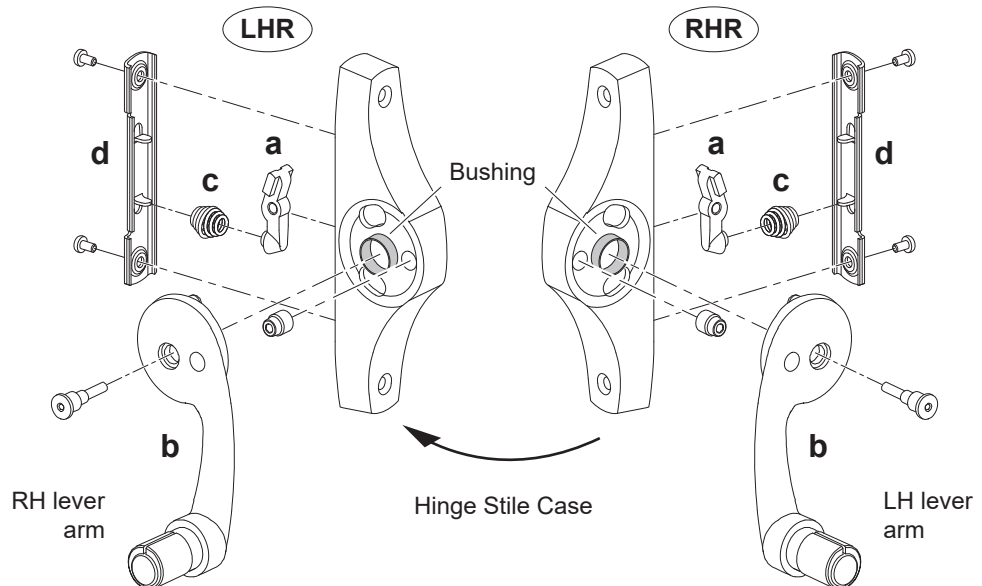


### REVERSING PROCEDURE FOR LOCK STILE CASE

Invert the case and reassemble in order shown (a thru d) with opposite hand lever arm from hinge case.

### REVERSING PROCEDURE FOR HINGE STILE CASE

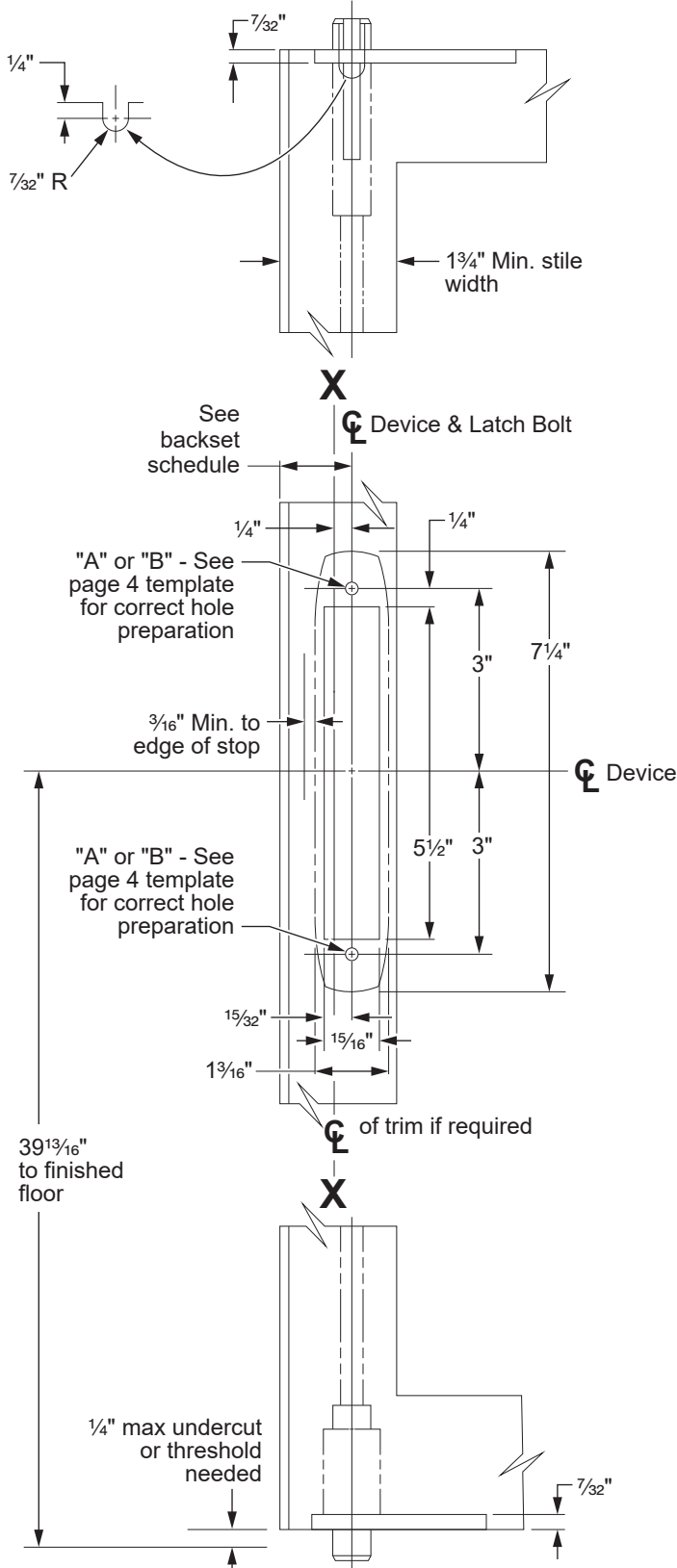
Disassemble hinge stile case, rotate parts as shown with spring always at the bottom. Reassemble in order shown (a thru d) with opposite hand lever arm from center case.



ⓘ When exchanging parts, be certain that one bushing remains on the hub of each case.

## 2 Prepare door.

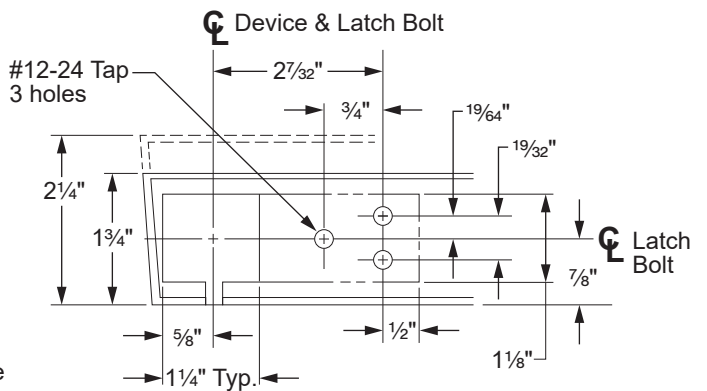
- (i) This device is for metal door only.
- Tape door template (page 4) to inside face of lock stile according to handing. Be sure vertical centerline of device on template is parallel to edge of door and backset is as shown in schedule below. Be sure horizontal centerline of device is 39-13/16" from finished floor.
  - Prepare door as shown.
  - Prepare door for top and bottom bolt guides. See Figures 1 and 2 below.
  - If door requires trim, make additional preparations per trim template.



DEVICE INSTALLATION SCHEDULE	
Installation	Backset from high side of bevel
Flush hollow metal door	2-1/2"
Minimum 1-3/4" to 2-1/2" door stile	Single Door 1-9/32"
	Double Door 1-5/32"
Stiles wider than 2-1/2"	1/2 of stile

(i) Stop height of 1/2" minimum required.

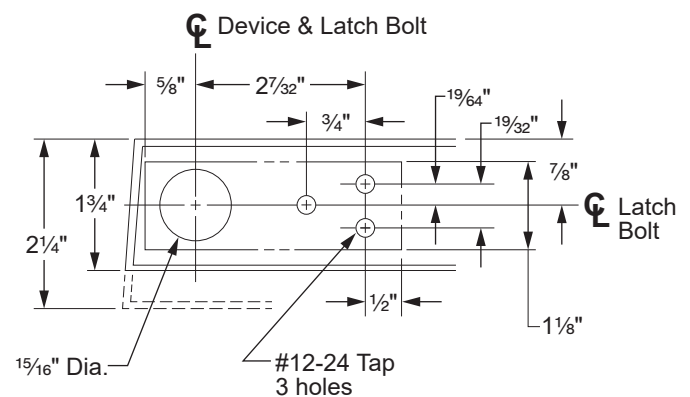
FIG. 1 (TOP PREP)



### METAL DOOR APPLICATION

Inside face of lock stile  
LHR shown, RHR opposite

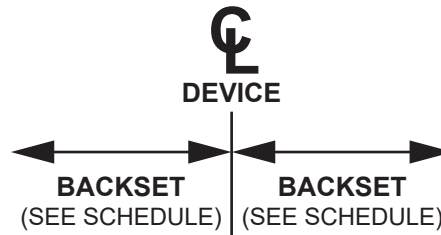
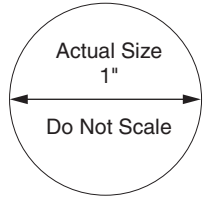
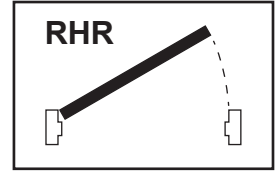
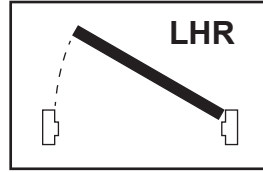
FIG. 2 (BOTTOM PREP)



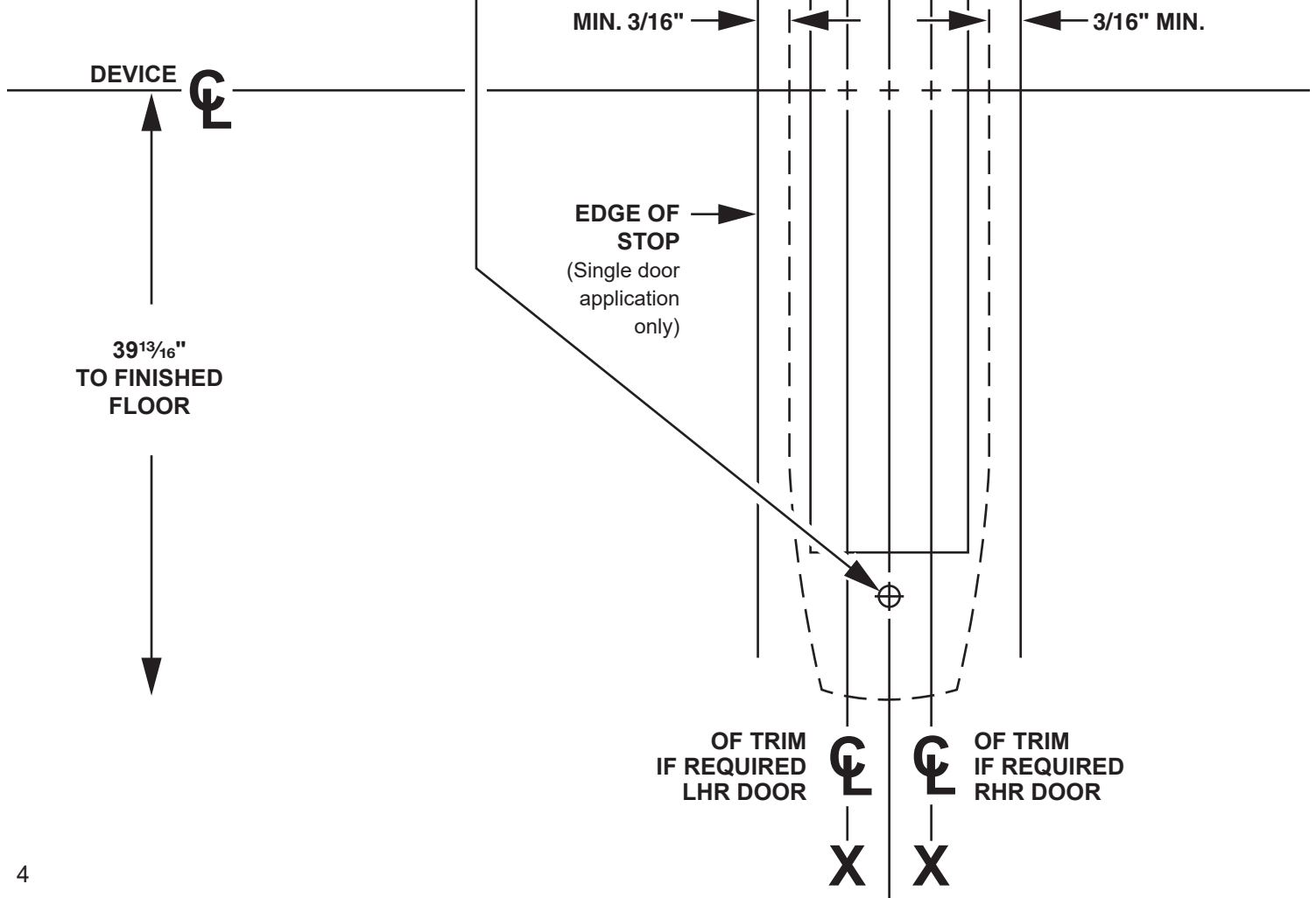
**THIS PAGE  
INTENTIONALLY  
BLANK**

DEVICE INSTALLATION SCHEDULE	
Installation	Backset from high side of bevel
Flush hollow metal door	2-1/2"
Minimum 1-3/4" to 2-1/2" door stile	Single Door 1-9/32"
	Double Door 1-5/32"
Stiles wider than 2-1/2"	1/2 of stile

**i** Stop height of 1/2" minimum required.



SCREW CHART	
Check door material and metal thickness For correct hole preparation	
<b>A</b> Aluminum Doors Unreinforced Hollow Metal Doors	<b>B</b> Reinforced Hollow Metal Doors
7/32" Dia. 2 holes for sex bolt head	1/4-28 Tap 2 holes for hex stud



**THIS PAGE  
INTENTIONALLY  
BLANK**

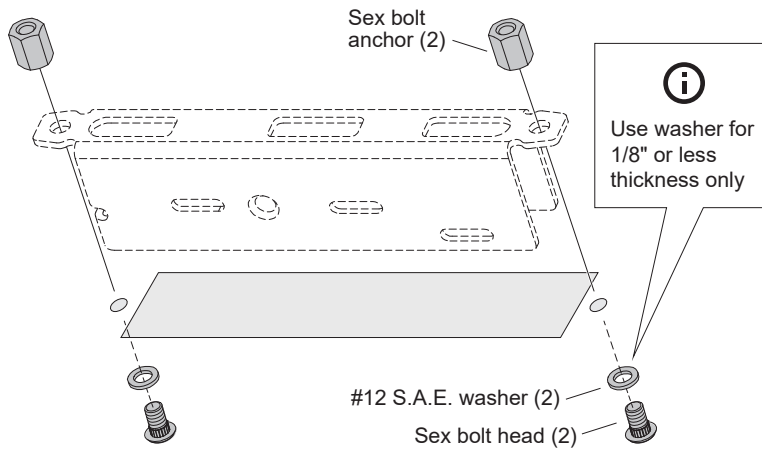
### 3 Install rod control assembly.

ⓘ Confirm orientation before installing. "Top" and "Bottom" of each assembly is marked with a label. Spring is at the bottom.

**A**

**ALUMINUM DOOR  
UNREINFORCED  
HOLLOW METAL DOOR**

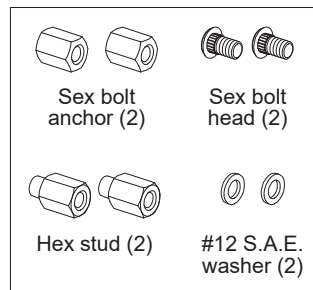
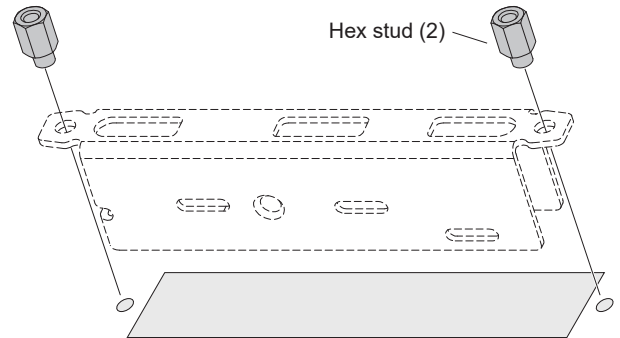
- Check metal thickness of door. If 1/8" or less, using blind fastener package, place a washer under the sex bolt. If metal thickness is greater than 1/8", omit the washer.
- Remove burrs and insert sex bolt head into 7/32" diameter hole from interior of door thru rod control cutout.
- Thread sex bolt anchor on sex bolt head and tighten.
- Remove sex bolt anchor and install rod control assembly with spring towards bottom of door.
- Replace sex bolt anchors.



**B**

**REINFORCED  
HOLLOW METAL DOOR**

- Check for reinforcing. If not reinforced, follow procedure for aluminum doors. If reinforced, continue with steps b, c, and d below.
- Tap 1/4-28 thread for hex stud.
- Install rod control assembly with spring towards bottom of door.
- Using blind fastener package, install hex studs.



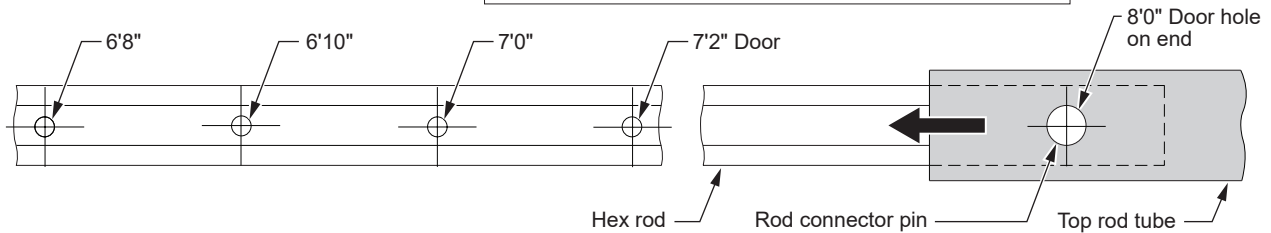
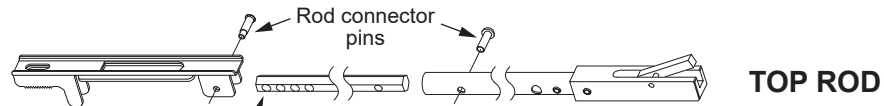
Blind fastener package

## 4 Assemble top rod according to door height.

- (i) Maximum approved door height for a 5547 non-fire device is 10'.
  - All stock size devices are furnished with adjustable top rods to fit door heights from 6'8" to 8'.
  - Extension rods are available for door heights up to 10' (non-fire devices only).
- e. Assemble top rod tube over hex rod. Align hole in tube that corresponds to predrilled height.
- f. Assemble rod member on thumbturn or lever devices if required (376L and 376T only). See directions in control box.
- g. Install rod connector pins. Do not peen yet.



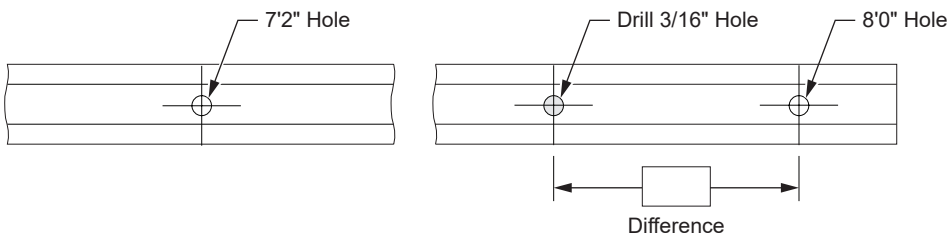
Top rod furnished with (4) predrilled holes to provide additional adjustment if required.



### Miscellaneous Door Heights up to 8'0"

- a. Measure door opening height (finished floor to rabbet)
- b. Subtract measured height from 8'0" to get difference
- c. Measure this difference from the 8'0" hole on the hex rod and mark a line.
- d. Assemble top rod tube over hex rod. Align hole in tube with the scribed line.
- e. Mark location of the hole in the tube on the hex rod.
- f. Drill a 3/16" hole thru the hex rod.
- g. Align the holes and install the rod connector pins. Do not peen yet.

Constant Dimension	8'0"
Door Opening Height	- <input type="text"/>
	<hr/>
Difference	= <input type="text"/>



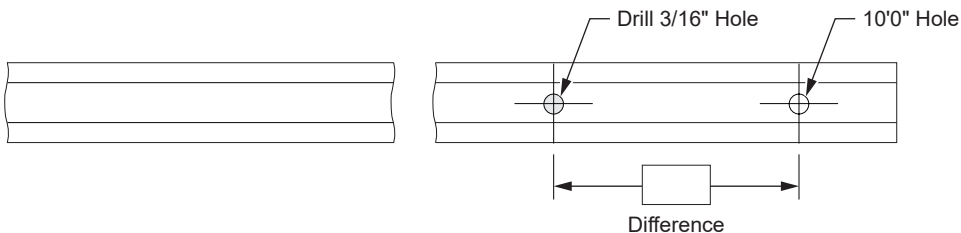
### Miscellaneous Door Heights up to 10'0"



For non-fire devices, extension rods are available for door heights up to 10'.

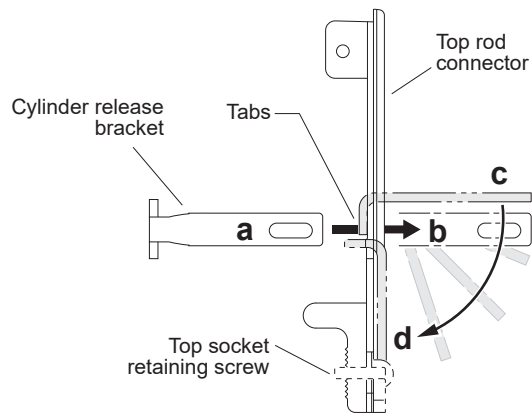
- a. Measure door opening height (finished floor to rabbet)
- b. Subtract measured height from 10'0" to get difference
- c. Measure this difference from the 10'0" hole on the hex rod and mark a line.
- d. Assemble top rod tube over hex rod. Align hole in tube with the scribed line. Cut hex rod if required.
- e. Mark location of the hole in the tube on the hex rod.
- f. Drill a 3/16" hole thru the hex rod.
- g. Align the holes and install the rod connector pins. Do not peen yet.

Constant Dimension	10'0"
Door Opening Height	- <input type="text"/>
	<hr/>
Difference	= <input type="text"/>



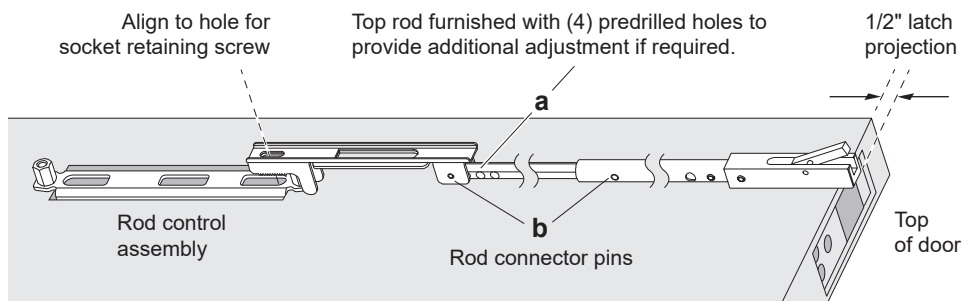
## 5 Install cylinder release bracket to top rod assembly (if required).

- ⓘ For 5547NL devices only (supplied with trim).
  - ⓘ Note that handing stamped on bracket corresponds with handing of door.
- a. Install cylinder release bracket.
  - b. Secure with top socket retaining screw.



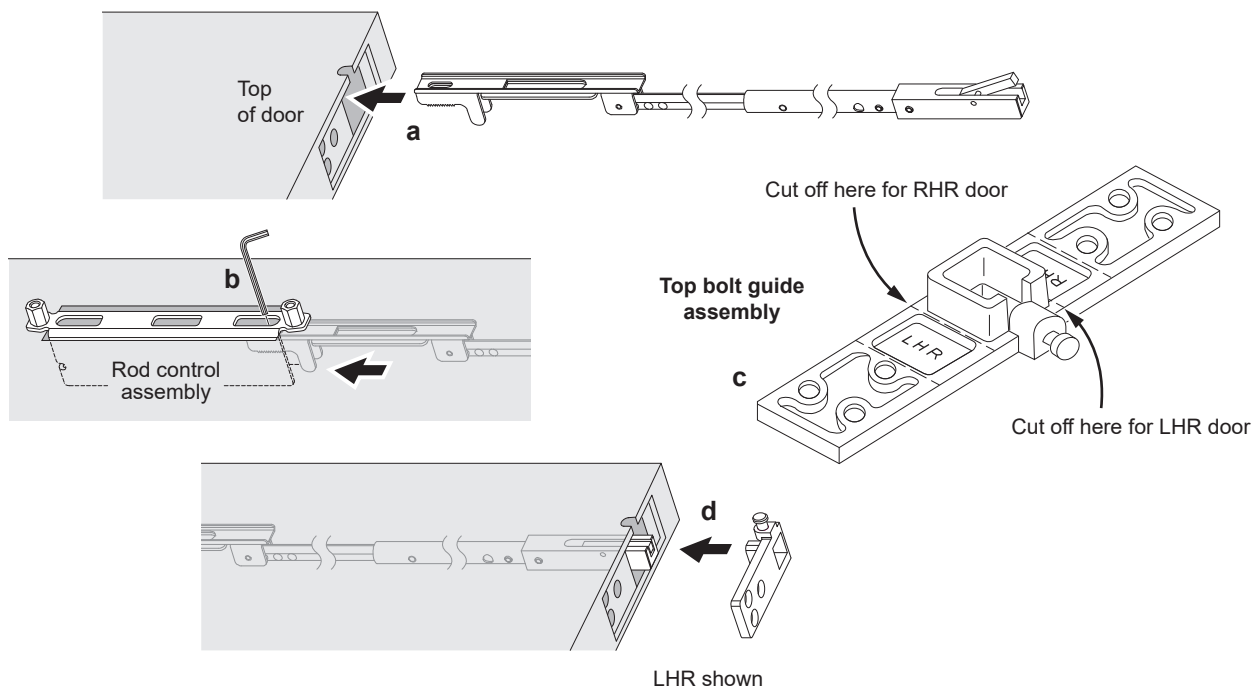
## 6 Set latch projection.

- a. Prior to installing top rod assembly into door channel, confirm 1/2" latch projection and alignment to rod control assembly as shown below. Adjust as needed.
- b. Peen the rod connector pins securely.



## 7 Install top rod and bolt guide assembly.

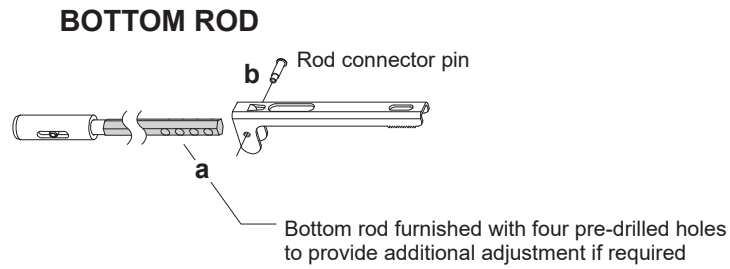
- a. Slip top rod assembly thru opening in top of door.
- b. Insert top rod connector into rod control assembly. Start socket retaining screw (from blind fastener package) into rod control .
- c. Cut top bolt guide as hand of door requires.
- d. Install top bolt guide assembly.





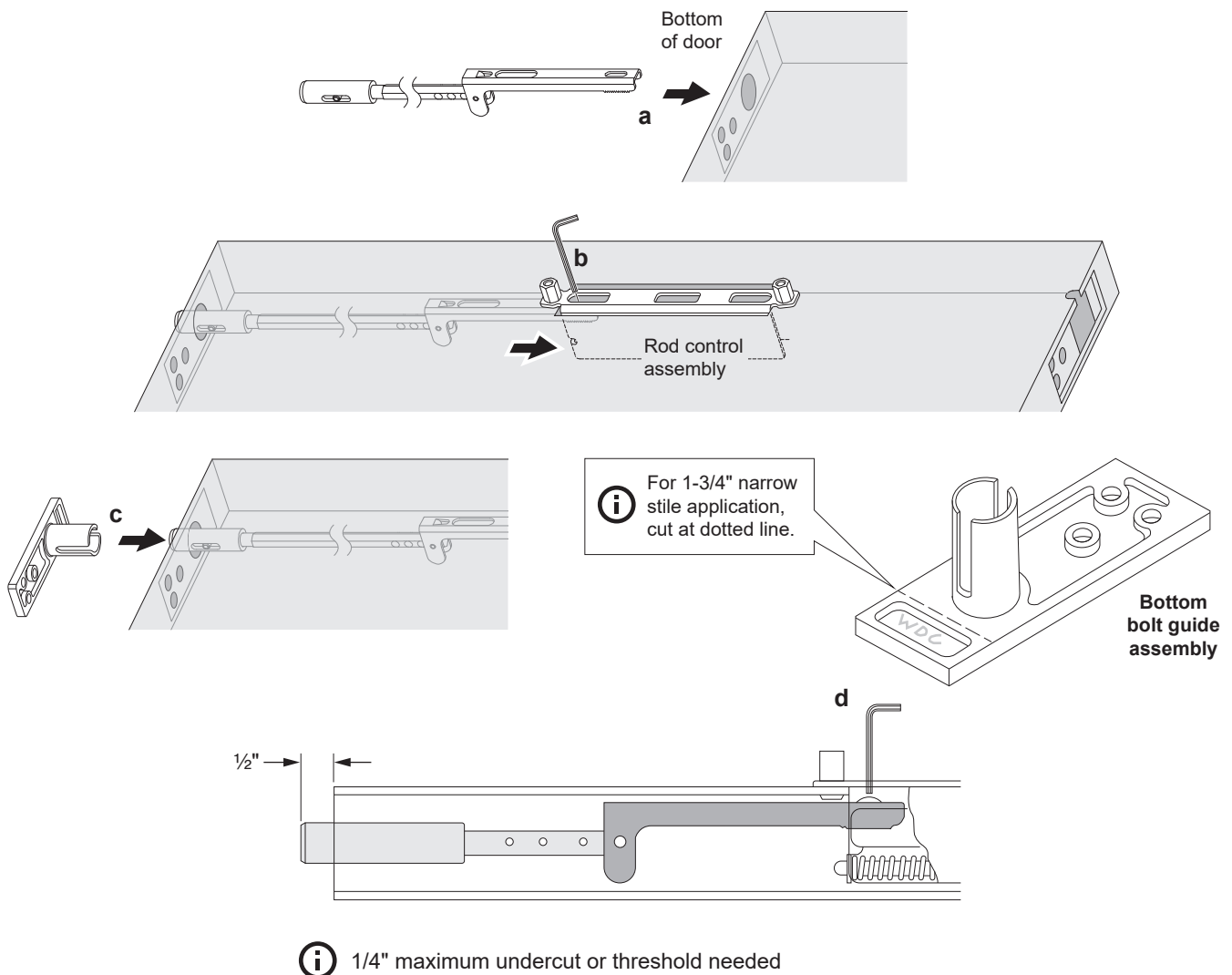
## 8 Assemble bottom rod.

- Assemble bottom rod. Select correct hole for desired length.
- Peen the rod connector pin securely.



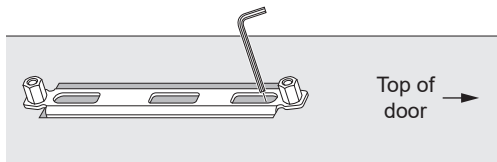
## 9 Install bottom rod and bolt guide assembly.

- Slip bottom rod assembly thru opening in bottom of door.
- Insert rod connector into rod control assembly. Start socket retaining screw (from blind fastener package) into rod control.
- Install bottom bolt guide assembly (cut first if required).
- Adjust bottom rod connector until bolt has 1/2" extension, then tighten socket set screw.

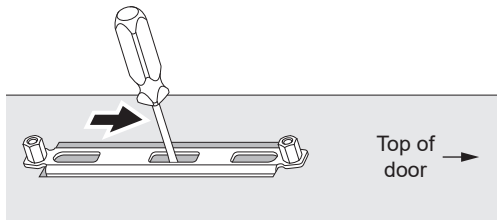


## 10 Adjust top rod.

- Depress top latch bolt. It should stay retracted. If latch does not stay retracted, adjust top rod at rod control assembly. Depress plunger to verify latch release.



- If using NL trim, adjust cylinder release bracket to contact trim cylinder cam, if required. Secure with top socket retaining screw.
- Test top and bottom bolt extension and retraction by lifting rod control with screwdriver or equivalent tool. Full latch bolt extension is 1/2".



- ⓘ Adjust rod member as needed (376L and 376T trim only).

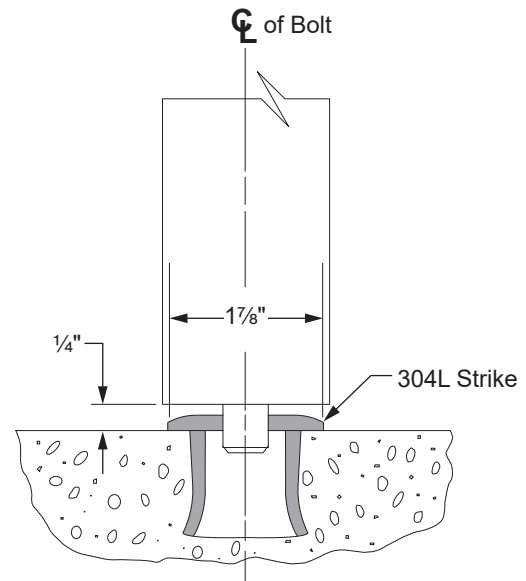
## 11 Apply outside trim (if required).

- See directions in trim carton. Line "X-X" on trim template corresponds to line "X-X" on device template and is parallel to edge of door. Locate line "X-X" on outside face of door.
- Prepare outside face of lock stile and apply trim.

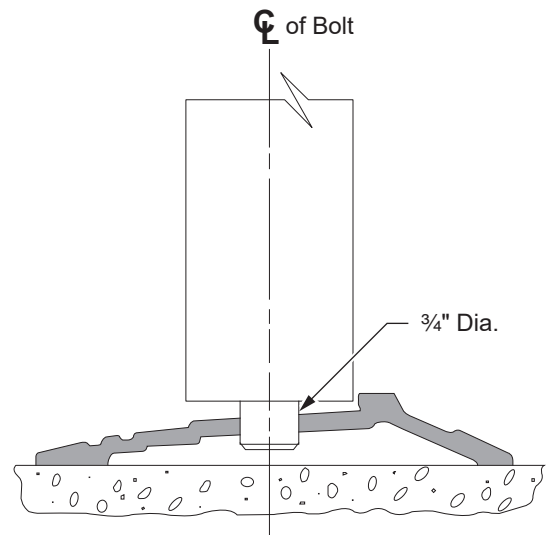
## 12 Attach lock stile case to door.

- ⓘ Use short screws from device mounting package 900520.

## 13 Hang door and install sill strike or threshold, if any.



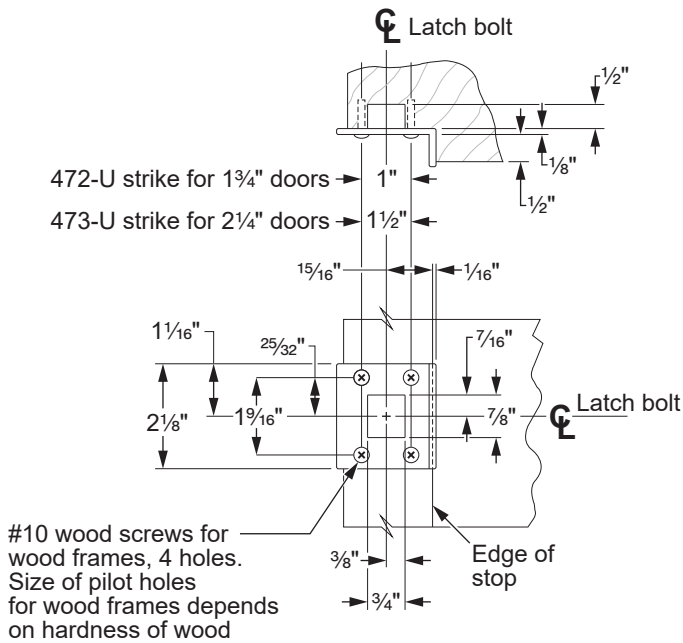
**FLAT SILL  
APPLICATION**



**LATCH TRACK  
THRESHOLD APPLICATION**

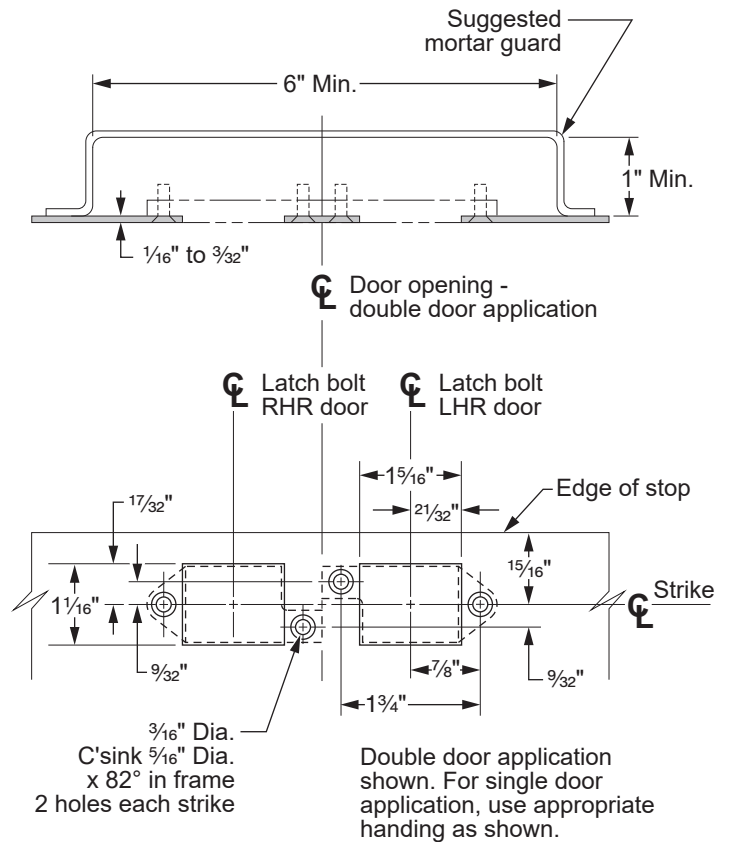
## 14 Install soffit strike.

- a. For wood frame, locate soffit strike position and mortise frame for strike.
- 472-U strike for 1-3/4" thick door
  - 473-U strike for 2-1/4" thick door



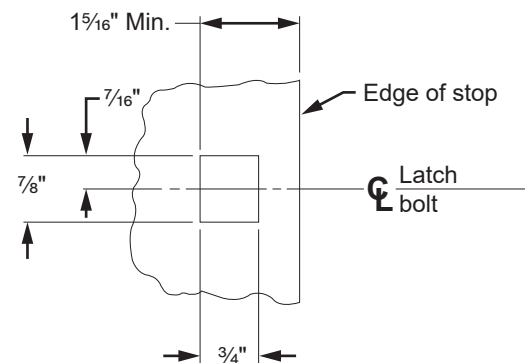
### WOOD FRAME PREPARATION

- b. For non-reinforced metal frame, locate soffit strike position and prepare for 471-U strike. Double door application shown. For single door application use appropriate handing as shown



### 471-U STRIKE HOLLOW METAL FRAME PREPARATION

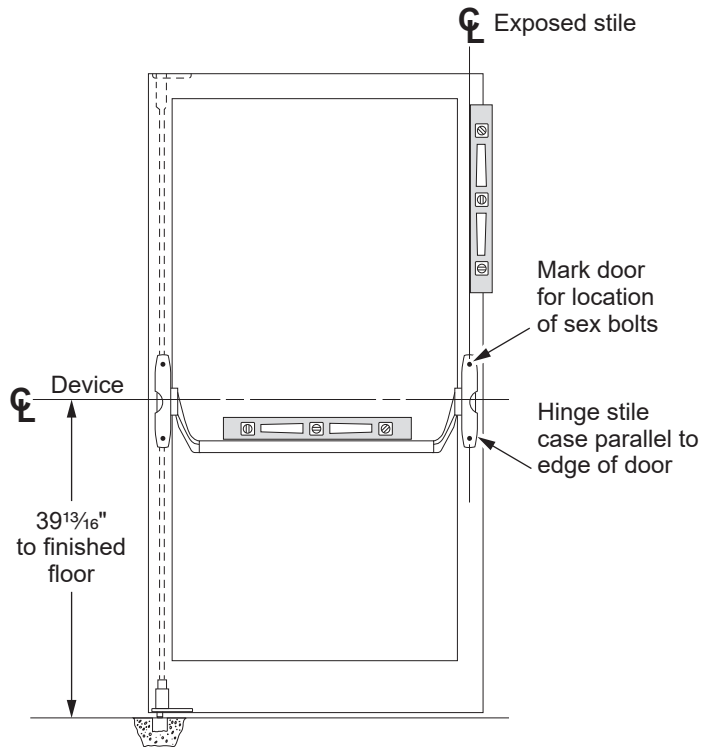
- c. For aluminum and reinforced hollow metal frame preparation, see below.



### REINFORCED HOLLOW METAL AND ALUMINUM FRAME PREPARATION

## 15 Apply hinge stile case and crossbar tube.

- a. Remove lever arm wedge-tite set screws. Make sure wedges and split rings are installed on lever arms.
- a. Dog lever arms in depressed position.
- b. Slip crossbar tube on lock stile and hinge stile lever arms. (See instruction 941009 for cutting crossbar, if necessary.)
- c. Be sure crossbar is level and hinge stile case is parallel to edge of door and approximately on centerline of exposed stile.



- d. Using holes in hinge stile case, mark location and prepare door for sex bolts. Drill 13/32" dia. outside and 3/8" dia. inside.
- e. Seat sexbolts in hinge stile of door with a soft hammer to prevent marking of door and sexbolts.
- f. With crossbar in place, install hinge stile case using 625 sexbolts and 3/4" mounting screws from mounting package 900520.
- g. Tighten wedge-tite set screws securely with dog key and screwdriver or equivalent for leverage, and test crossbar for free action. (See instruction 941009.)