



941021-00

Cylinder for 5547WDC Wood Door Device

556NL-CA

VON DUPRIN®

Installation Instructions

1. Prepare door for exit device. See exit device instructions for holes, line X-X, and center lines. Also prepare edge of door for cylinder and rod member as shown.
2. Prepare door for cylinder:
 - A. Transfer line X-X from inside (exit device side) of door to outside (cylinder side) of door. Use extra care if edge of door is beveled. Be sure line X-X is parallel to edge of door.
 - B. Locate and prepare all holes as shown.
3. Apply exit device.
4. Apply cylinder:
 - A. Cut cylinder tailpiece to length (Figure 1).
 - B. Install cylinder and assemble component parts (Figure 2).
 - C. Install and tighten cylinder thru bolt.
 - D. Adjust rod member to contact cylinder cam.

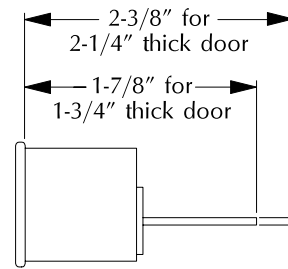
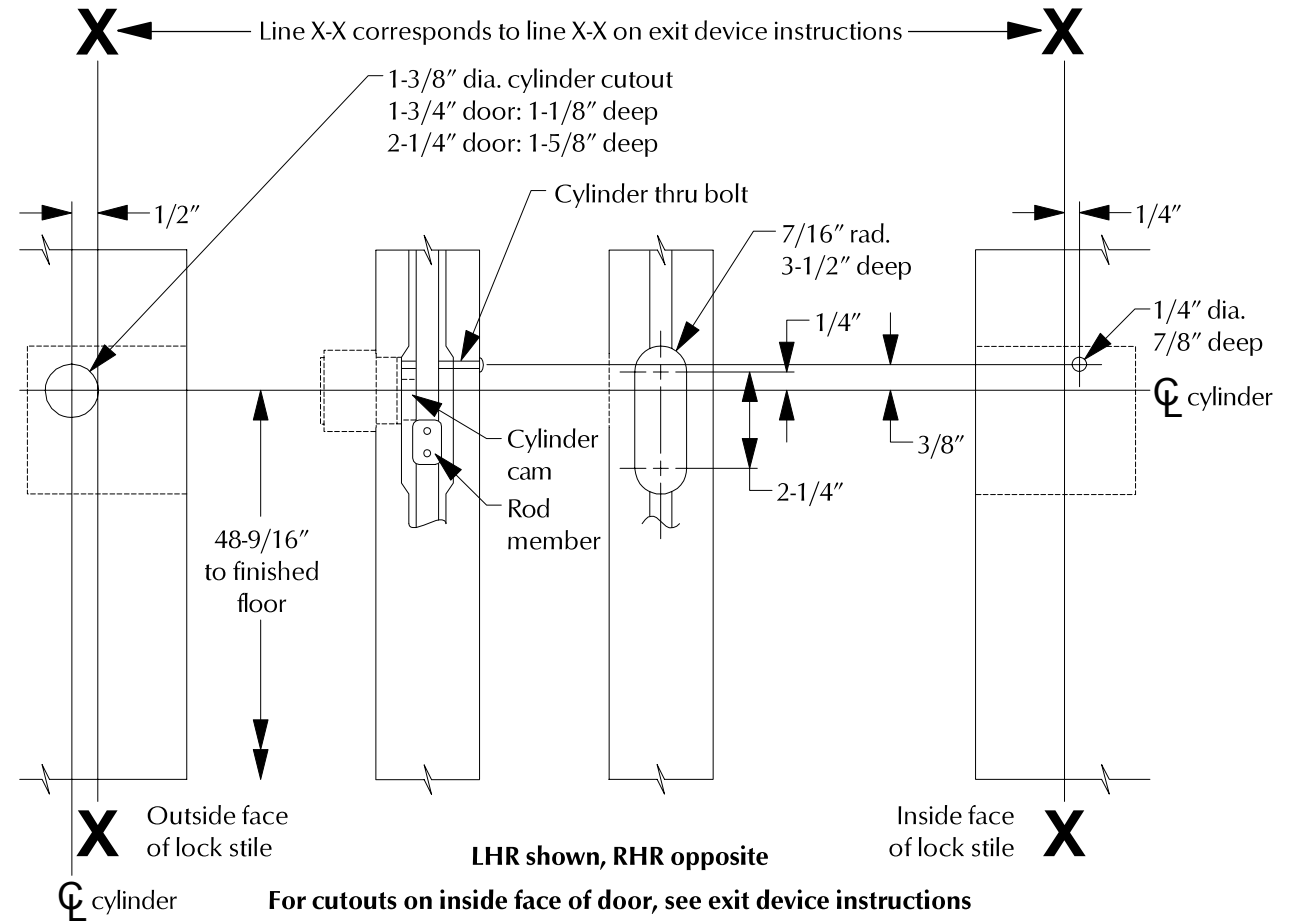
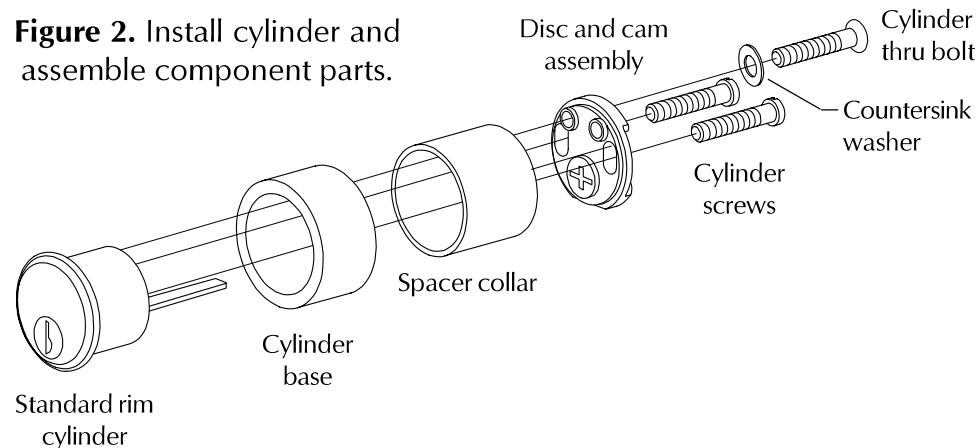


Figure 1. Cut cylinder tailpiece to length.

Figure 2. Install cylinder and assemble component parts.



Customer Service
 1-877-671-7011 www.allegion.com/us



© Allegion 2014
Printed in U.S.A.
941021-00 Rev. 01/14-b