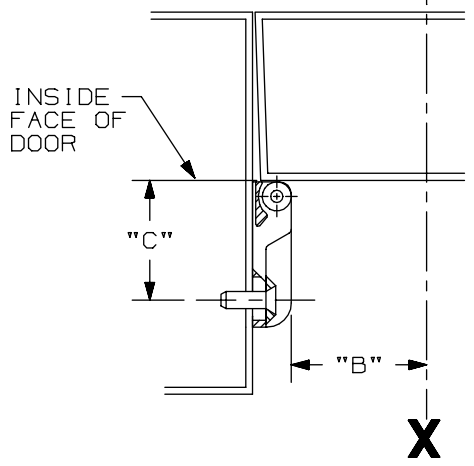


SINGLE DOOR INSTALLATION			
DEVICE	DIM "B"	DIM "C"	RECOMMENDED MIN STILE*
33A/35A RIM	19/32"	1 9/16"	2"
44 RIM EO,DT,NL,TP	1 11/16"	1 9/16"	3 3/8"
44 RIM K	1 9/16"	1 9/16"	3 3/8"
55 RIM	17/32"	1 9/16"	1 3/4"
22 RIM	1 9/16"	1 9/16"	3 13/16"
88 RIM EO,DT,NL,TP	1 11/16"	1 9/16"	3 3/8"
44 RIM K,L	1 9/16"	1 9/16"	3 3/8"
98/99 RIM	1 9/16"	1 9/16"	3 13/16"

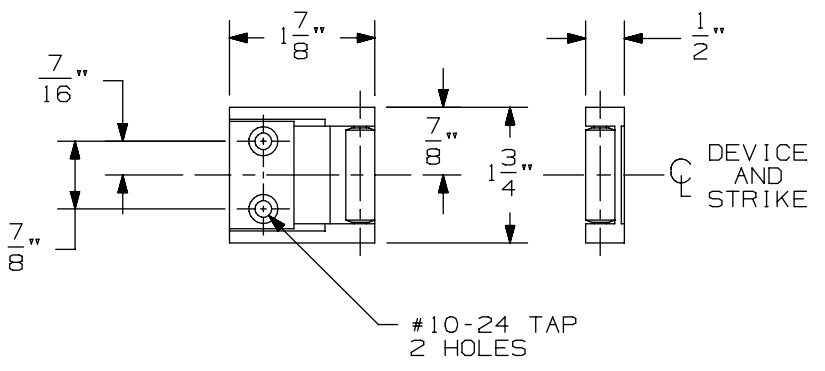
①

LINE X-X CORRESPONDS TO LINE X-X ON DEVICE TEMPLATE



* CONSULT FACTORY FOR STILE WIDTHS LESS THAN MIN. RECOMMENDED TO ENSURE PROPER APPLICATION

①



LHR APPLICATION SHOWN, RHR APPLICATION OPPOSITE

1439 Roller Strike

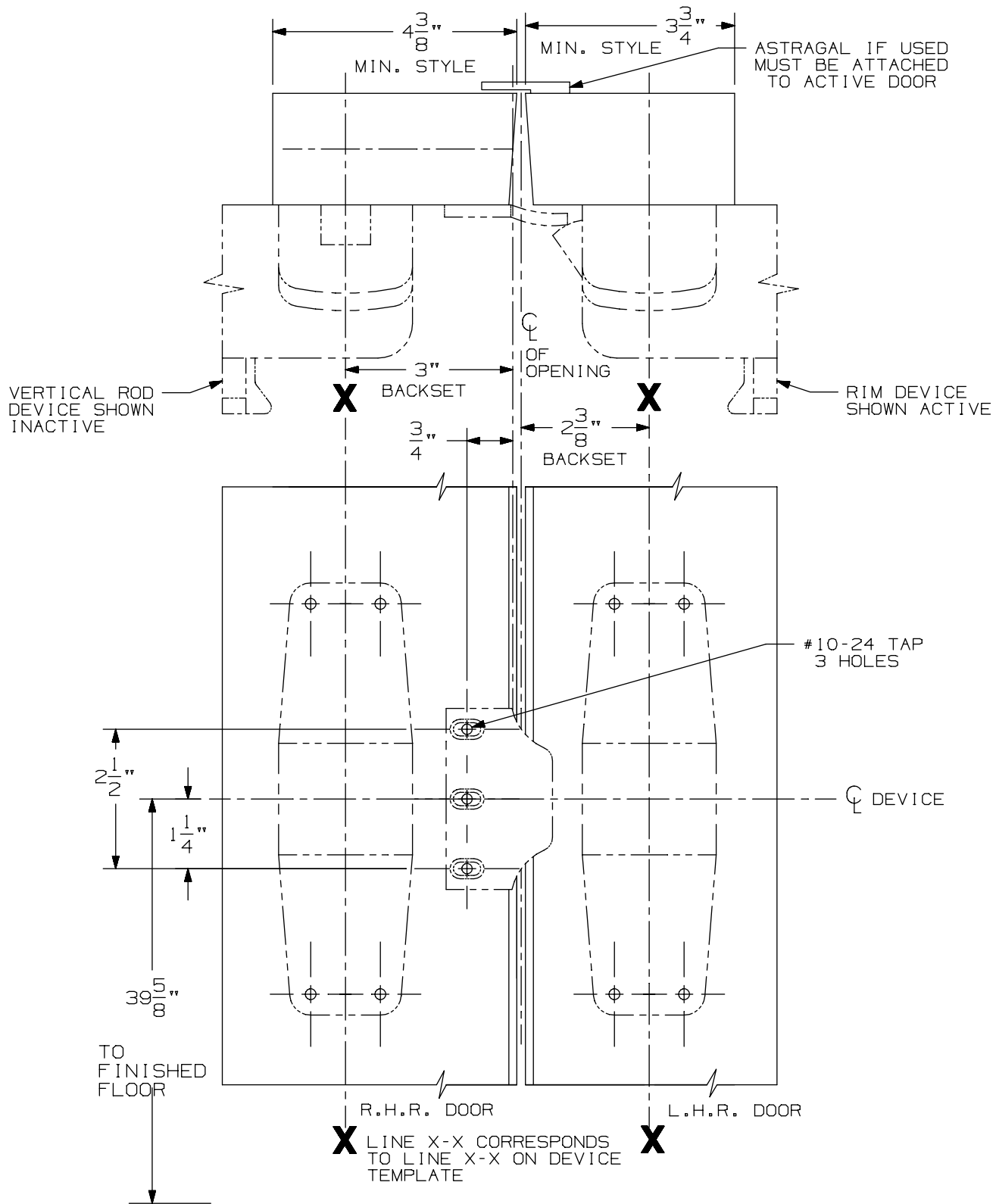
VON DUPRIN®

NOTES: SEE MASTER SHEET #10001 FOR SUGGESTED REINFORCING

TEMPLATE NUMBER:

30029_a

DATE:
05-23-13



- NOTE: 1. FOR DEVICE FUNCTIONS SEE APPROPRIATE DEVICE TEMPLATES.
2. SEE DEVICE TEMPLATE FOR MOUNTING HOLE LOCATIONS.
3. A COORDINATOR MUST BE USED ON THE INACTIVE DOOR.

1609 Strike Application for 98/99 Vertical Rod & 98/99 Rim Devices (Panic Device Only)

VON DUPRIN®

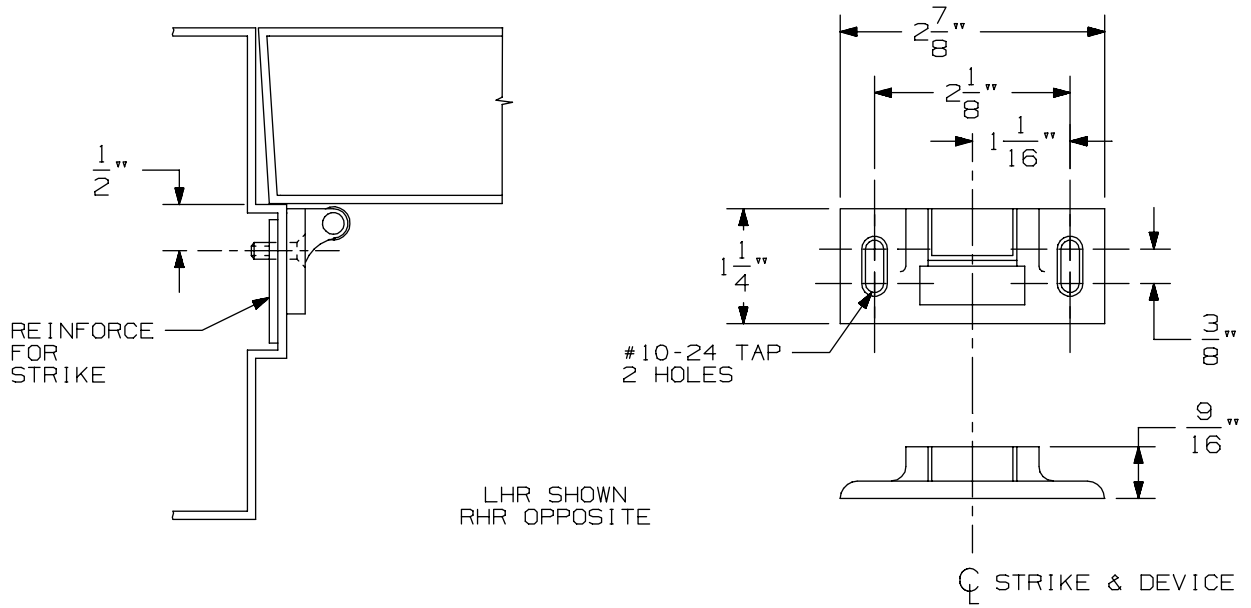
NOTES: SEE MASTER SHEET #10001 FOR SUGGESTED REINFORCING

TEMPLATE NUMBER:

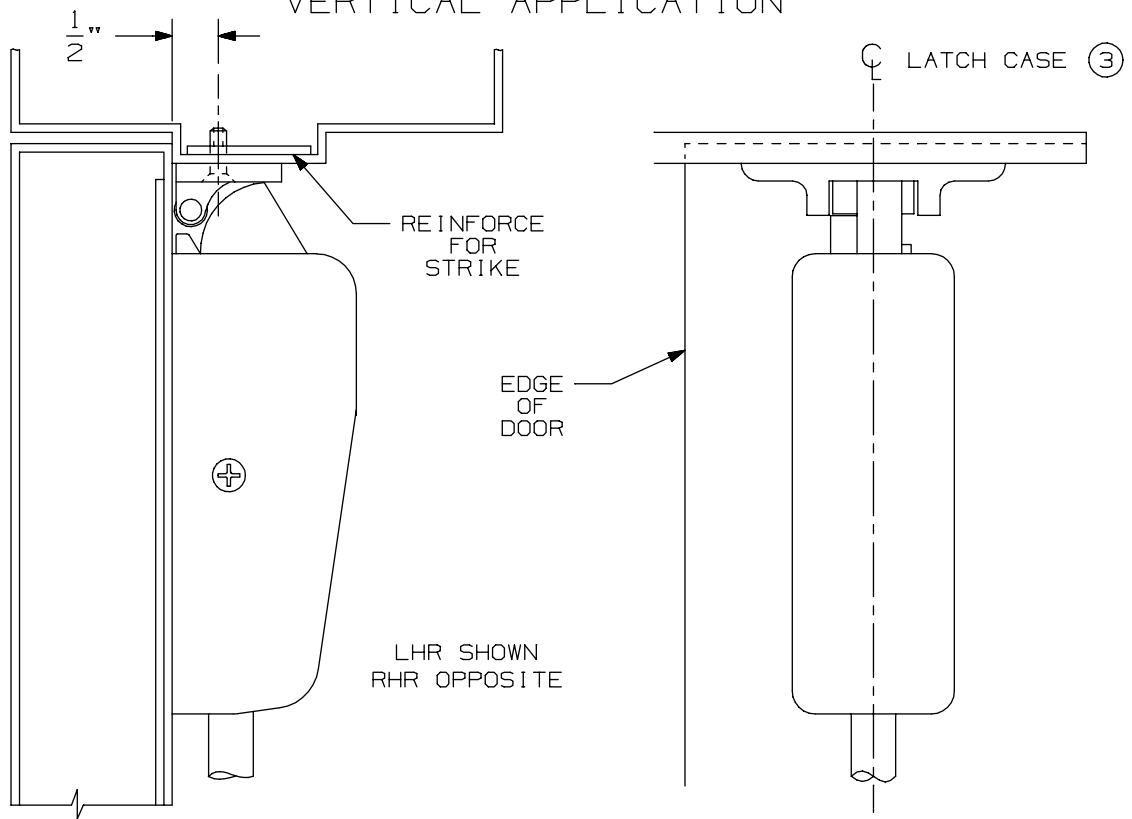
30229_a

DATE:
05-28-13

RIM APPLICATION



VERTICAL APPLICATION



NOTE: LATCH CASE MOUNTING HOLES TO BE PREPARED AT INSTALLATION ON DOOR.

264 Strike

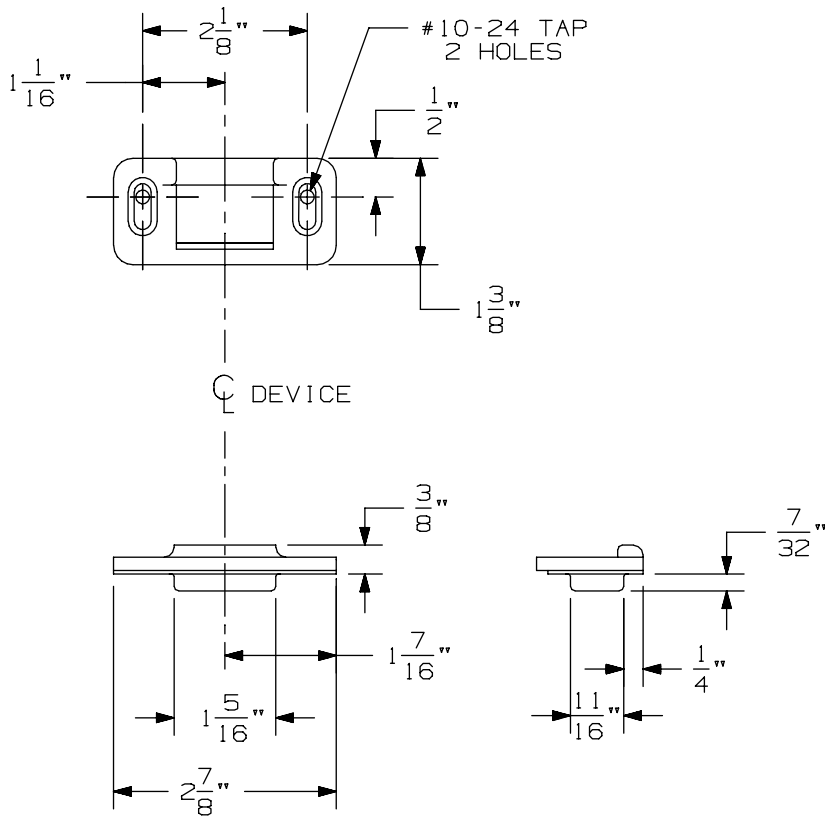
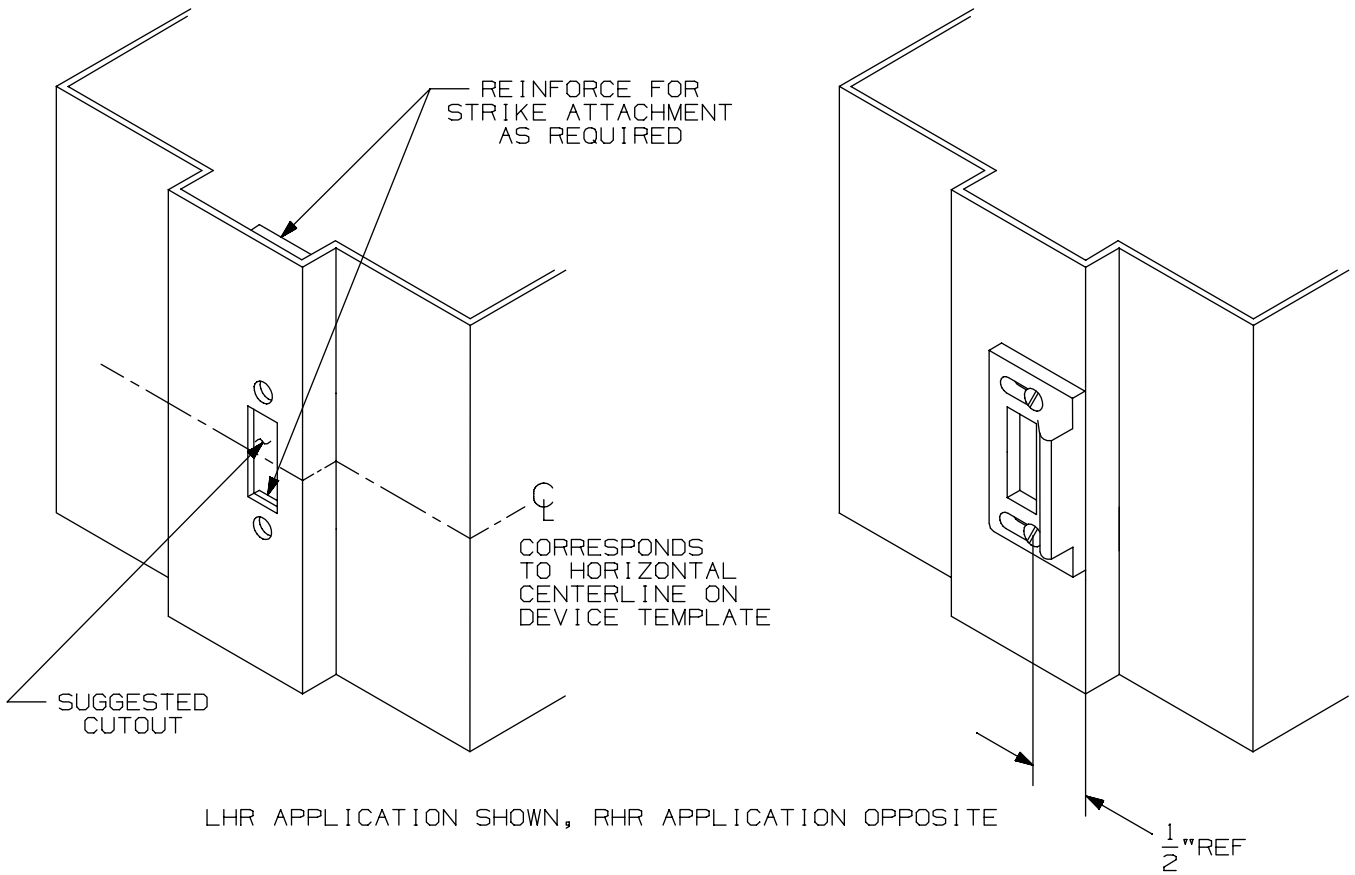
VON DUPRIN®

NOTES: SEE MASTER SHEET #10001 FOR SUGGESTED REINFORCING

TEMPLATE NUMBER:

30009_a

DATE:
05-23-13



1606 Half Mortise Strike

VON DUPRIN®

NOTES: SEE MASTER SHEET #10001 FOR SUGGESTED REINFORCING

TEMPLATE NUMBER:

30024_a

DATE:
05-23-13