



47255402

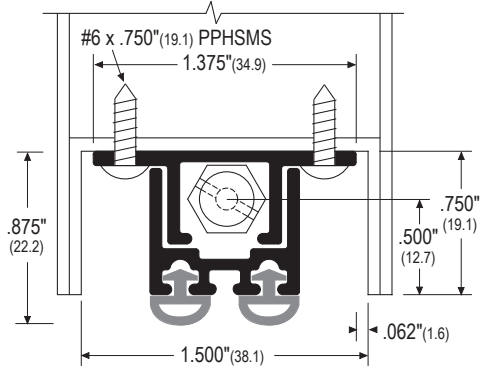
Model 355, 3551, 3552 Automatic Door Bottom



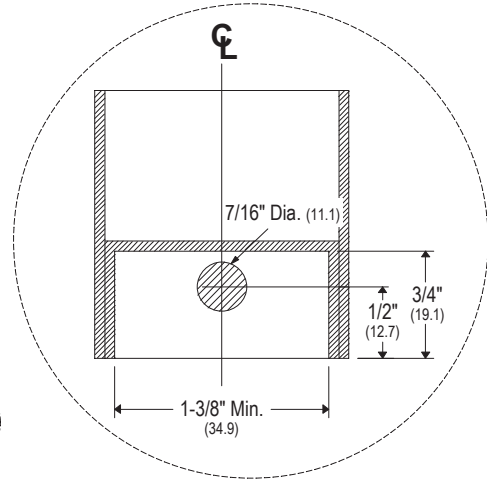
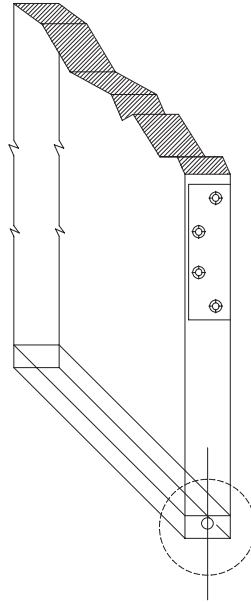
For Metal Doors Only

Installation Instructions

Regular Duty

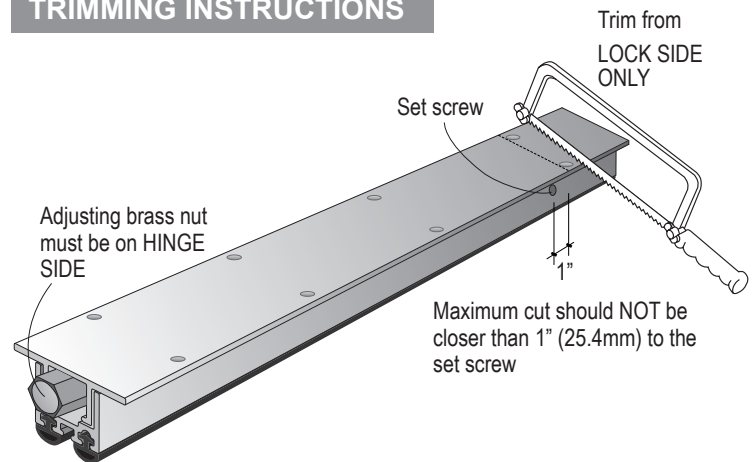


Model 355 Shown



1. Cut the automatic door bottom to 3/16" (4.8mm) less than the full width of the door.
2. Drill a 7/16" (11.1mm) hole at the lower edge of the door on the hinge side. (See the illustrations.) This is to allow the extension of the adjusting nut to make contact with the jamb.
3. Install the automatic door bottom with the adjusting brass nut extended through the hole slightly.
4. Final adjustment to control the drop of the automatic door bottom can be made once the unit is installed, by turning the adjusting brass nut in or out. Open and close the door while adjusting the brass nut to get the desired seal with the floor or sill. Maximum Drop is 1/2" (12.7mm). Do not over adjust.

TRIMMING INSTRUCTIONS



Positive Pressure Tested Gasketing Materials For Fire Doors.
For application to hollow metal type fire doors rated up to 3 hours, fiberglass or wood composite type fire doors rated up to 1-1/2 hours and wood type fire doors rated up to 20 minutes. Category J

* Listing only applicable for model 355 and 3551.

Customer Service

1-877-671-7011 www.allegion.com/us



© Allegion 2019
Printed in U.S.A.
47255402 Rev. 05/19-e