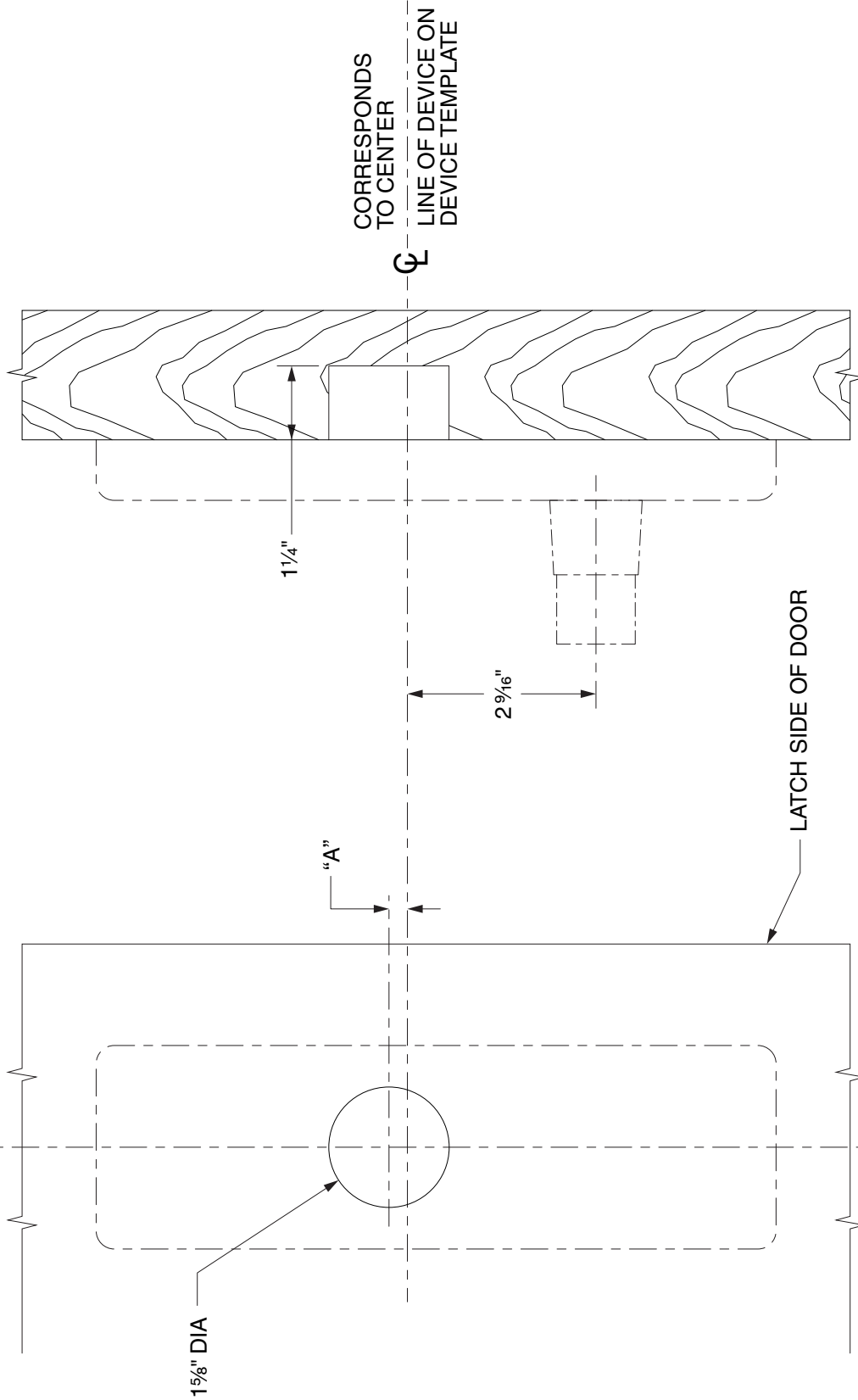


LINE X-X CORRESPONDS TO
LINE X-X ON DEVICE TEMPLATE

X



1 5/8" DIA

1 1/4"

"A"

2 9/16"

LATCH SIDE OF DOOR

OUTSIDE
FACE OF
LOCK STILE

DEVICE APPLICATION SCHEDULE

DEVICE	DIM. "A"
98/99 RIM SERIES DEVICE	1/4"
9827/9927 SERIES DEVICE	1/4"
9847WDC/9947WDC SERIES DEVICE	1/4"
9849WDC/9949WDC SERIES DEVICE	1/4"
9875/9975 SERIES DEVICE	2 1/4"

LHR SHOWN
RHR OPPOSITE

CORRESPONDS
TO CENTER
LINE OF DEVICE ON
DEVICE TEMPLATE

⊕

NOTE: MOUNTING HOLES TO BE PREPARED
AT INSTALLATION ON DOOR.

FOR CUTOUTS ON INSIDE FACE OF DOOR
SEE DEVICE TEMPLATE.

996L-NL Series Trim
Wood Door Application

VON DUPRIN®

NOTES: SEE MASTER SHEET #10001 FOR SUGGESTED REINFORCING

TEMPLATE
NUMBER:

W20005_d

DATE:
07-19-17