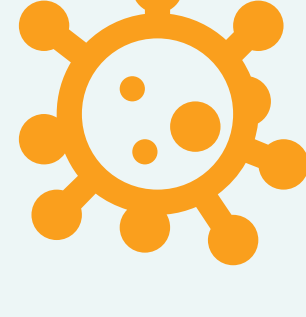


2022

Health care trends report

Allegion's latest research examines the trends and challenges impacting today's health care facilities, and how things have evolved during the past five years. From the impact of the COVID-19 pandemic to the rise of electronics, daily operations changed and new technologies were adopted.



The pandemic profoundly altered the ways hospitals operate



Strategic initiatives shifted in the last five years, including changes in purchasing trends and building automation



New strategies were adopted to reduce surface transmission and control infections



Health care is accommodating patients of all abilities and needs, even more than in the past



Electronic access control adoption escalated throughout the health care market



There is a rise in behavioral health patients, resulting in a need for safer accommodations



Hospitals are prioritizing their staff's satisfaction highly, perhaps a result of the pandemic's impact on the medical workforce

Trends

The impact of the COVID-19 pandemic

01

88% of health care professionals surveyed cited at least one way that COVID-19 impacted their organization's infrastructure needs and plans.



Security upgrades were elevated



Budgets were decreased



Plans and projects were delayed



02

Trends in infection control

While infection control isn't new to health care, the pandemic forced facilities to adopt new solutions.

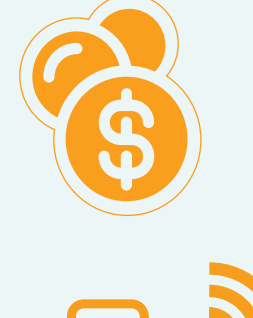
9/10

using antimicrobials and hands-free or touchless access products

Shifts in hospital operations

03

Strategic initiatives that grew the most during the last 5 years include:



Purchasing door hardware through GPOs



Contracting with external facilities management companies



Building automation



Strategic use of patient outcome-based objectives



04

Electronic access acceleration

More than 90% of hospitals are using electronic access control, up 10% in five years. Yet cost and lack of budgets still remain barriers to widespread adoption.

82%

are using hardwired



71%

are using wireless

Facilities are more accommodating

05



More than 80% of hospitals updated doors to meet ADA compliance, with 4 in 10 stating these changes are up from the past.

Why?

To mitigate risks and comply with codes

What?

Changes to door knobs and levers and automatic operators were most common



06

Emphasizing patient safety

Nearly 6 in 10 facilities are experiencing an increase in patients requiring rooms with ligature resistant hardware, up 7% from 2016.



Drivers of the increased need include increased mental health issues and the impact of COVID-19

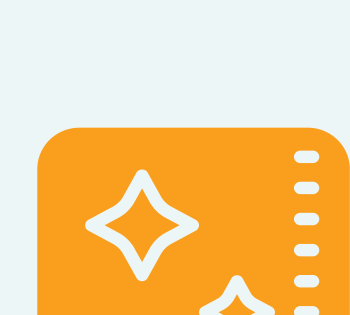
Hospitals valuing the workforce

07

Hospitals are focused on keeping their staff healthy and happy. Staff satisfaction was among the top ways of measuring effectiveness for the following:



Hands-free and touchless products



Antimicrobials



Quiet door hardware

[Download the full report](#)