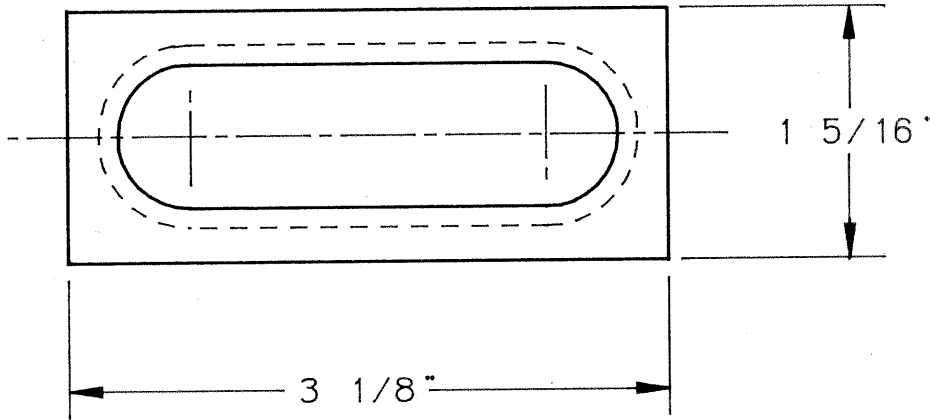


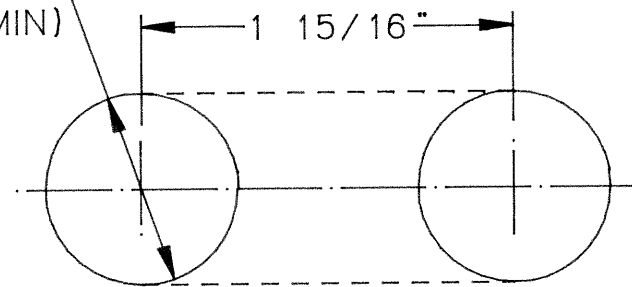
# TEMPLATE DRAWING

DWG # 2257A  
Rev A, new drawing #  
10/5/99



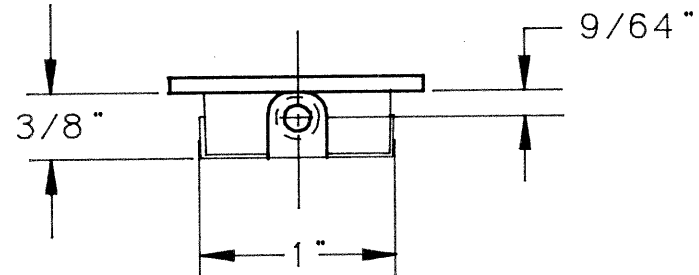
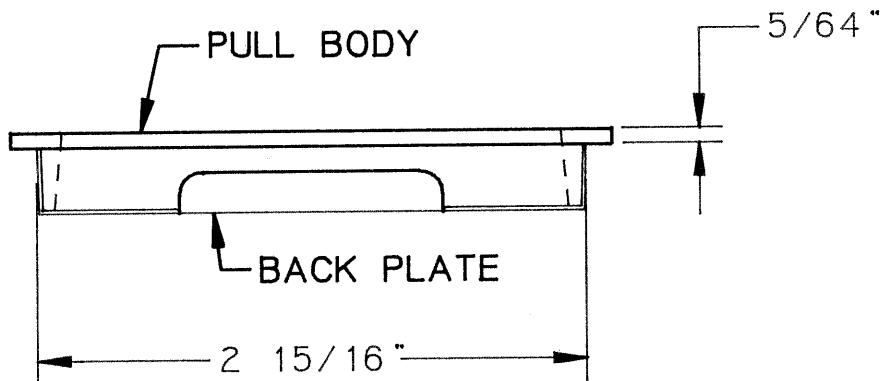
1.0" DIA  
( $\frac{3}{8}$ " DP. MIN)

## HOLE PREPARATION



## INSTALLATION INSTRUCTIONS

1. REMOVE BACK PLATE FROM PULL BODY
2. PLACE PULL INTO PREPARED HOLE AND MARK SCREW HOLE LOCATIONS
3. REMOVE PULL AND DRILL SCREW HOLES WITH  $\frac{3}{32}$ " BIT,  $\frac{5}{8}$ " DEEP
4. ASSEMBLE BACK PLATE ON PULL, PUSH INTO HOLE AND SECURE WITH (2) #4 OVAL HEAD WOOD SCREWS



222TEMPL (FJH DISK #9)

222 FLUSH PULL

P/N 137001

TEMPLATE NO. HB-222-121

H.B. IVES

DRAWN BY: FJ HARRIS

DATE: 12-21-95

P.O. BOX 1887, NEW HAVEN, CONN. 06508