

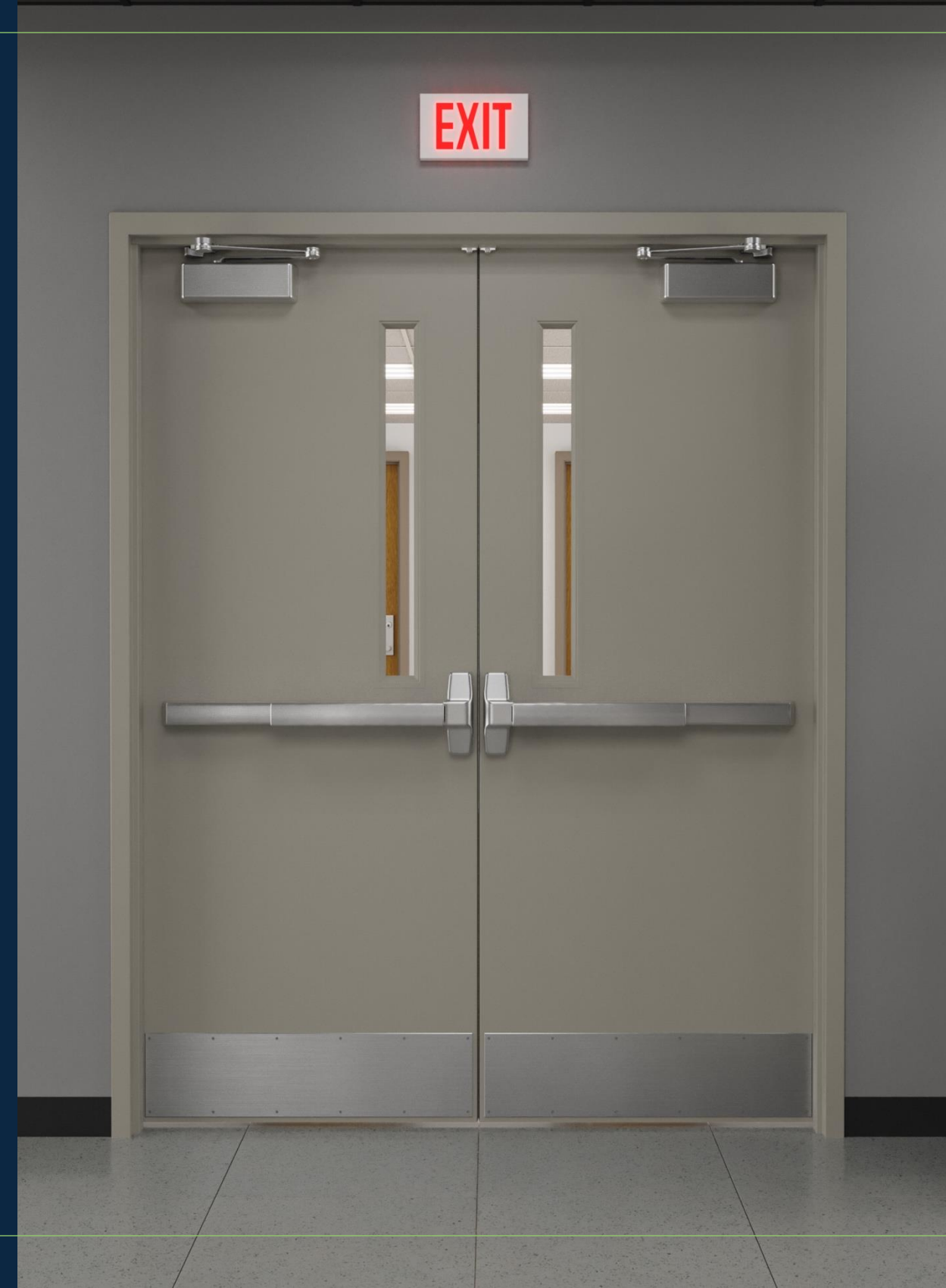
LCN®

ALLEGION™



4040XP Heavy Duty Closer

Designed for Demanding Applications



LCN®

ALLEGION™



What You'll Learn

- ➔ Door closer 101:
Purpose, Anatomy and Considerations
- ➔ 4040XP: Performance, Durability and Features
- ➔ Common Applications Support and Resources



Back to the Basics of Door Control



5-15
YEARS

50%

Shifting demographics, with **50%** of current workforce **retiring in 5-15 years**

- Skilled trades labor shortage
- New technicians entering the workforce

Purpose of a Door Closer



Security

If a door doesn't close properly, then security is compromised.



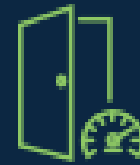
Accessibility

All doors must be accessible unless specifically exempt.



Life Safety

A door closer on a fire door ensures safe and easy exit in an emergency.



Control

A door closer controls the force and speed of a door in the opening and closing cycles.



Energy Conservation

An effective door closer can help improve energy efficiency.



Code Compliance

Closers are an integral and required part of fire door assemblies.

Anatomy of a Closer

Closer Arm

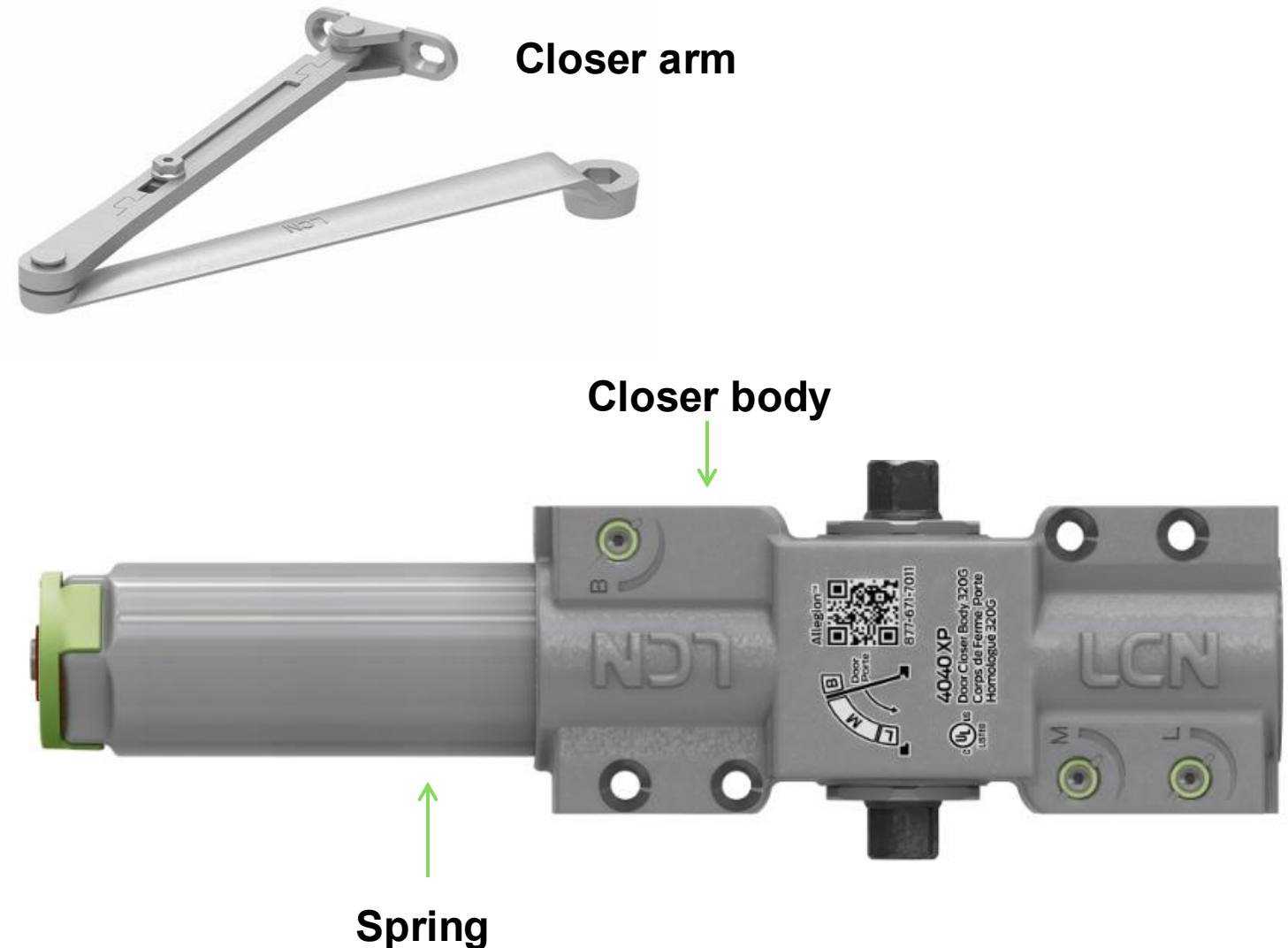
Forged steel component that transmits force from the user input on the door to the closer opening

Closer Body

Base of a closer made of cast iron or aluminum for strength & durability

Spring

Component within closer body that stores energy and gives the power to close the door



Anatomy of a Closer

Pinion

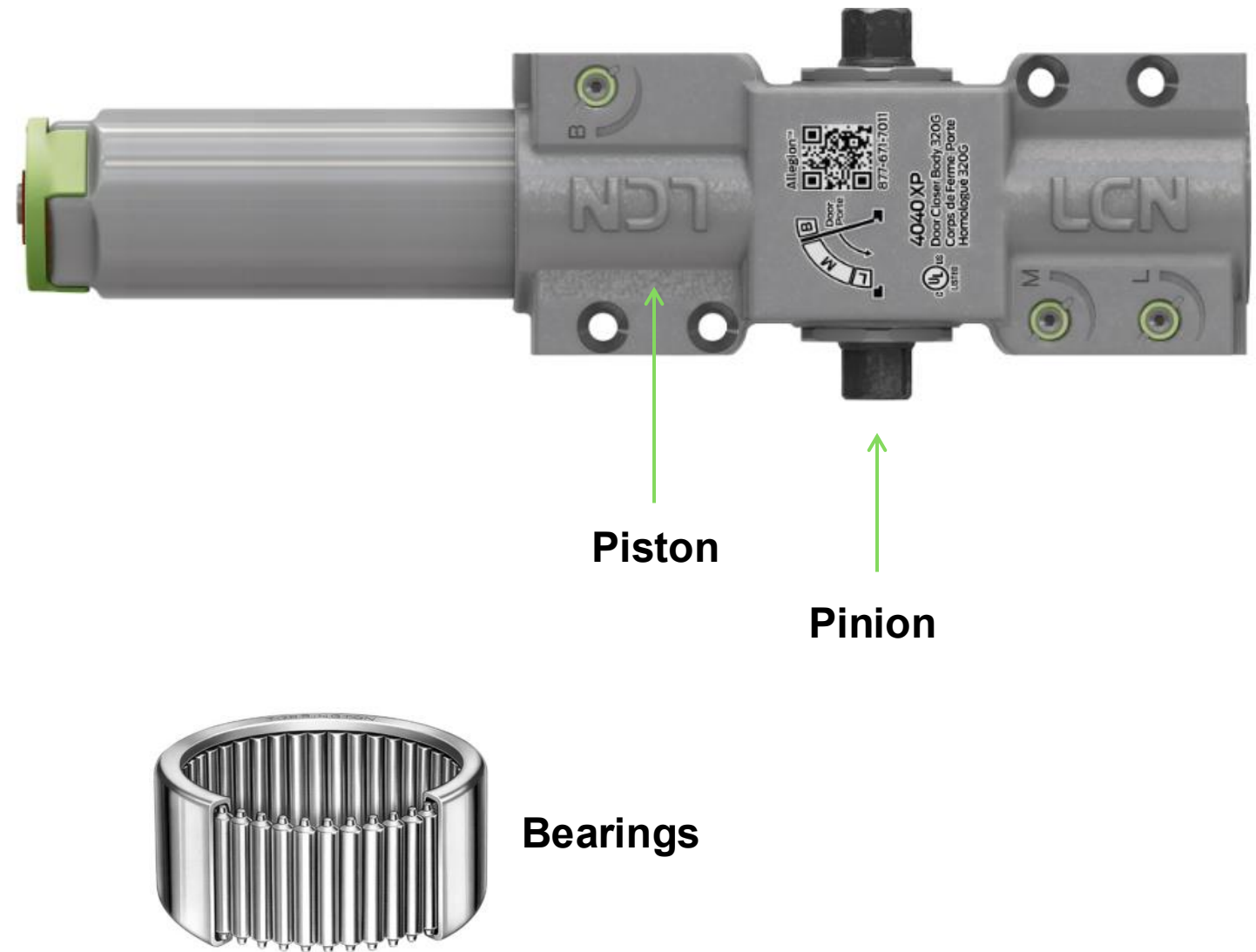
Steel component attached to the arm that moves the piston when the door is open

Piston

Steel component that compresses the spring to store energy for closing cycle of the door

Bearings

Components that make opening & closing a door easier, smoother & quieter



Anatomy of a Closer

Hydraulic Fluid

All-weather fluid that regulates speed of the door

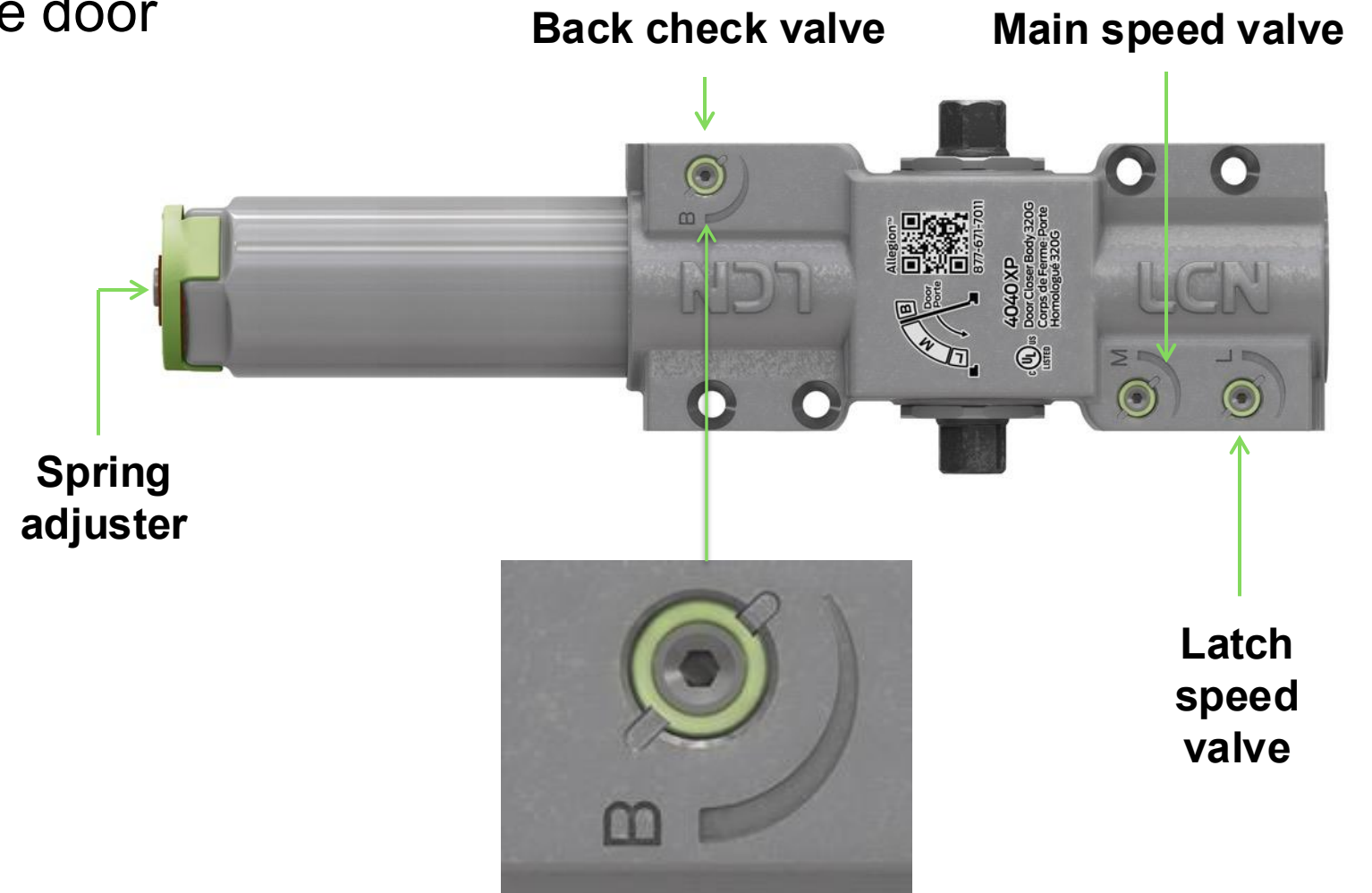
Regulation Valves

Parts that control the speed of door swing

- **Latch speed valve:** Slows down the door to cushion it and ensure it doesn't slam
- **Main speed valve:** Increases or decreases the speed of the main closing zone
- **Back check valve:** Slows door prior to contact with door stop or fully opened position

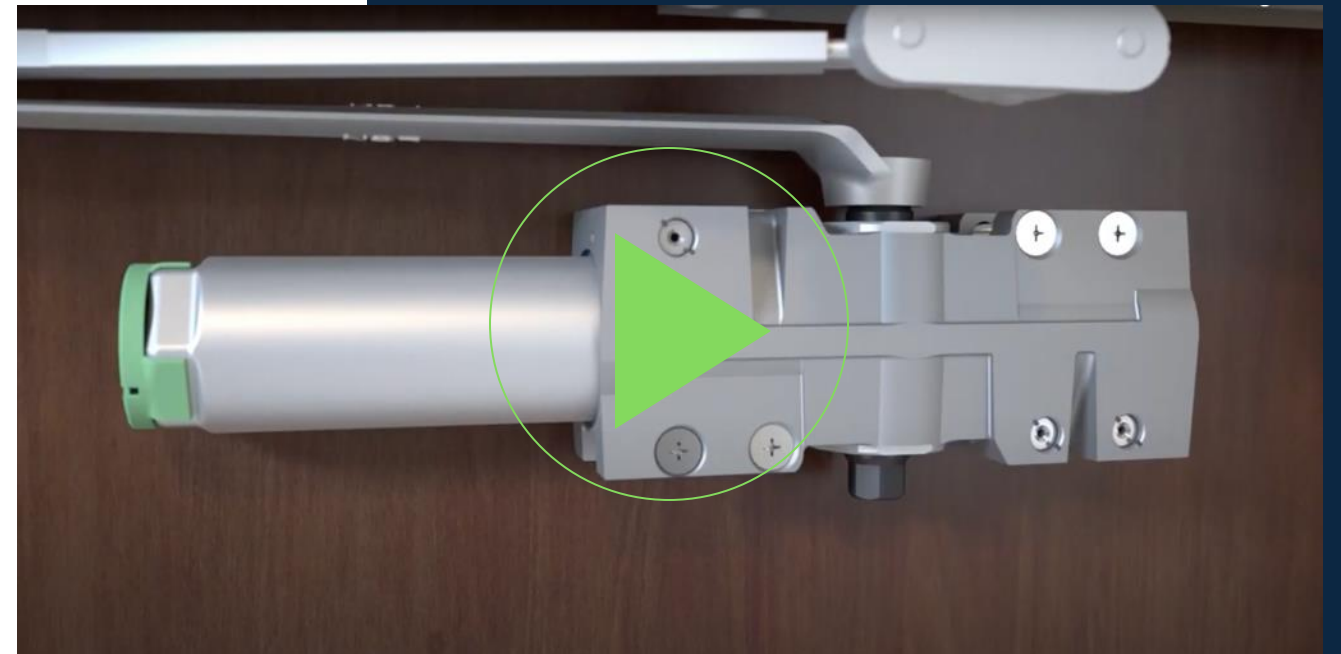
Spring Adjuster

Dial on end of spring tube that allows you to make adjustments to spring power



How a Closer Works

- When the door opens, the arm on the closer body transmits the motion to the pinion
- As the pinion turns, it moves the piston, which, in turn, compresses the main spring and pumps the hydraulic fluid through the back check regulation valve
- The spring pressure increases as the door is opened
- As the door is closing, the spring expands & exerts pressure on the piston
- As the piston moves back, fluid is forced through the main & latch speed regulation valves back to the area surrounding the spring



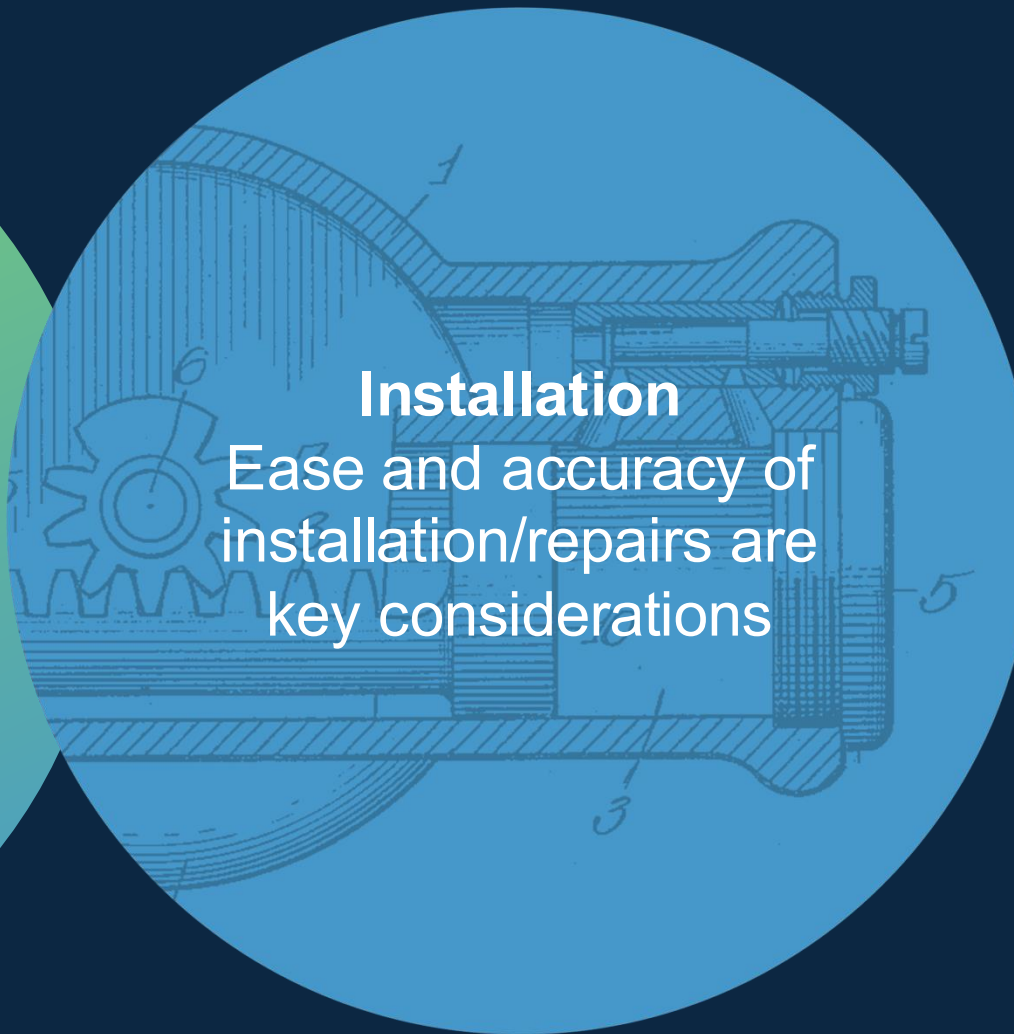
Considerations When Choosing a Door Closer

Durability

Consider daily traffic flow and the amount of use and abuse an opening may sustain

Installation

Ease and accuracy of installation/repairs are key considerations



Adjustability

Door closers that need to be adjusted often are labor-intensive and can be prone to breakage if not done correctly

The ROI on a Quality Door Closer



Less expensive
closers = more time,
installation and
repairs





4040XP Series:
A Heavy-Duty
Closer Unlike
Any Other

4040XP: Performance

The LCN 4040XP is a durable non-handed, surface-mounted heavy-duty closer. It meets all the standards you'd expect of a heavy-duty closer:

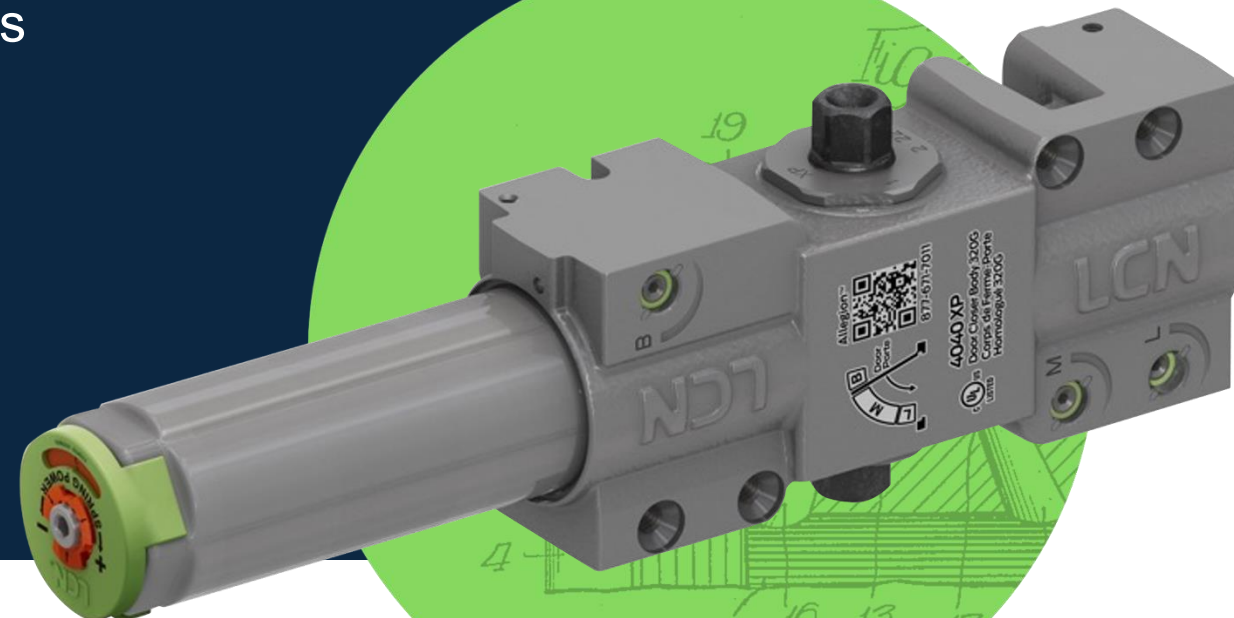
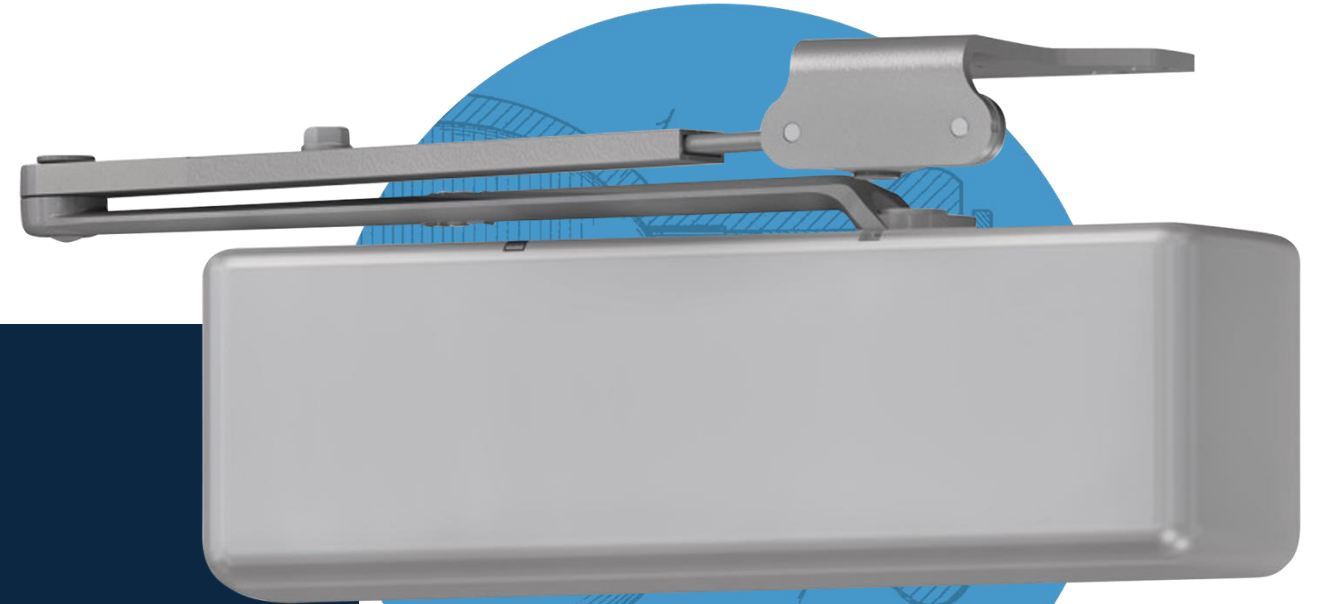
- ANSI/BHMA A156.4 Grade 1 rated
- ADA certified
- cUL listed and UL listed
- 30-year limited warranty



4040XP: Durability

The beauty of the 4040XP is that it goes way beyond the required standards.

- Strong materials designed to go the distance
- Proven production processes and technology
- Forging steel and heat-treating processes
- Abuse-cycle and temperature tests



4040XP: Key Features



Cast Iron cylinder

- Rugged performance, longer life, and maximum control



Single-piece, heat-treated forged steel arms

- Engineering to withstand bending and breaking



Captured, full complement bearings

- Minimum 0.5" height to wear more evenly and reduce potential risk of leakage

All weather Liquid X hydraulic fluid

- Consistent performance through every season, regardless of temperature change



4040XP

Key Features

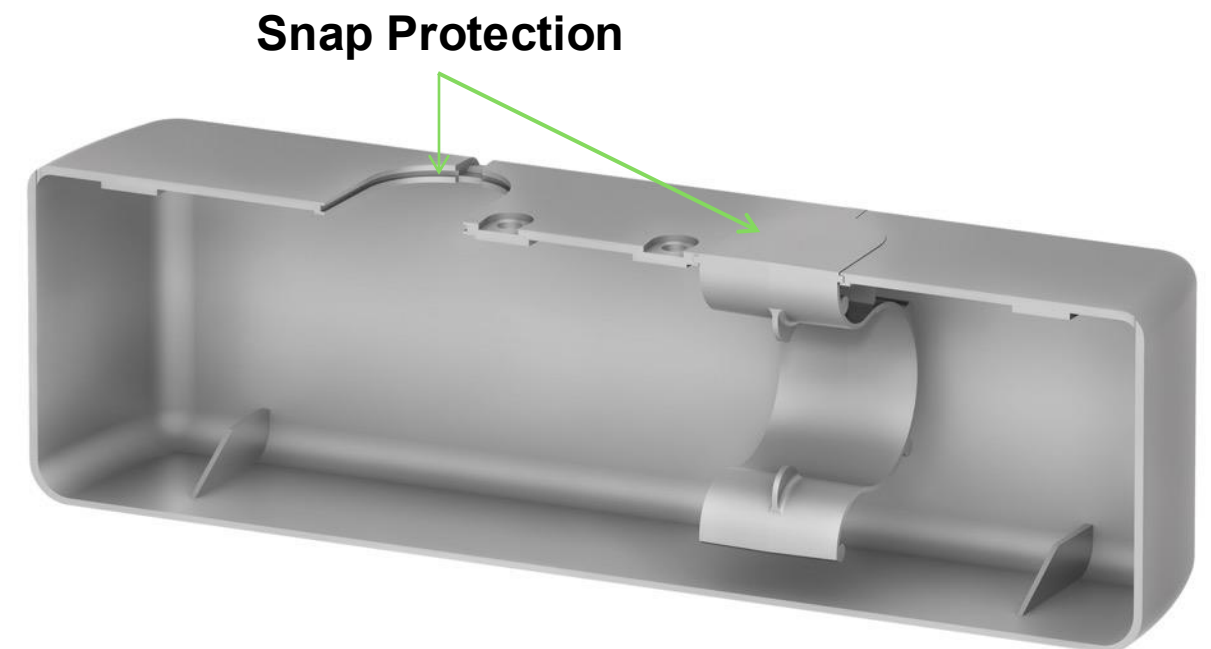
4040XP Key Features

Cover Retention

Patented snap-fit cover designed to help secure our cover and further protect the product

Benefits

Improves retention fit and protects the product



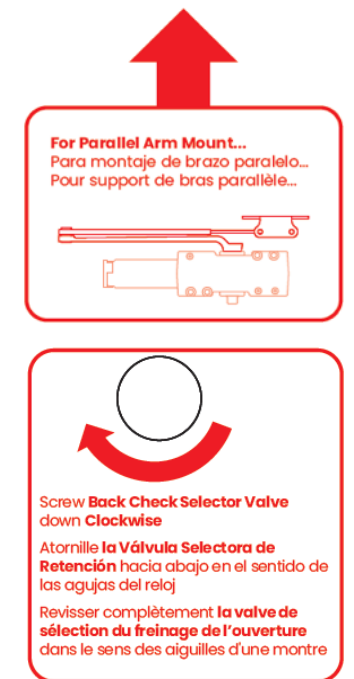
4040XP Key Features

Parallel Arm (PA) Selector Valve

This warning sleeve alerts installers of important steps to prevent improper installation

Benefits

Alerts installers to important installation steps preventing improper installation



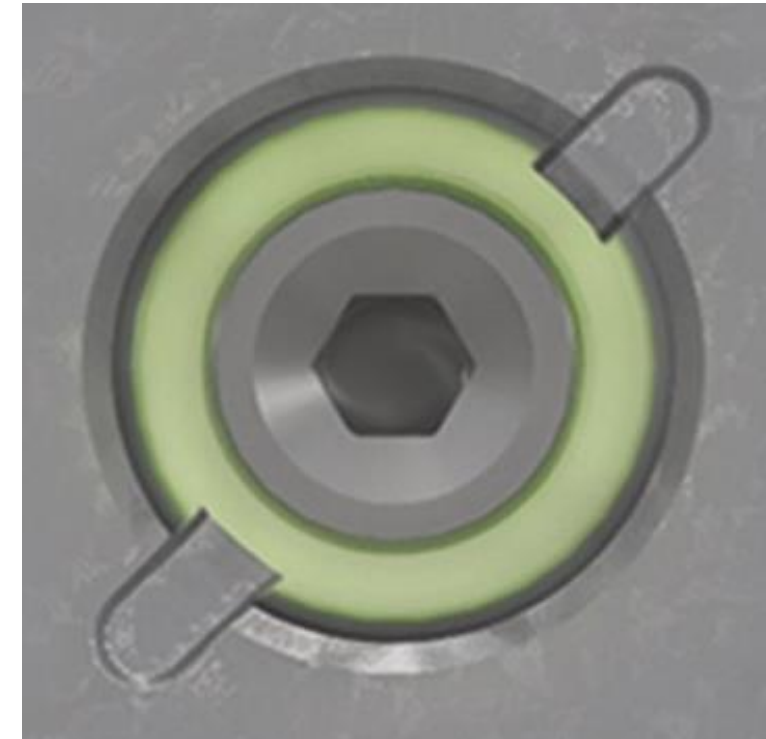
4040XP Key Features

Patented Positive Stop Regulation Valve

Addition of patented positive stop on all regulation valves (latch, main speed, & back check) to prevent screw from being backed out

Benefits

Eliminates leaking closers from unintentional misadjustment



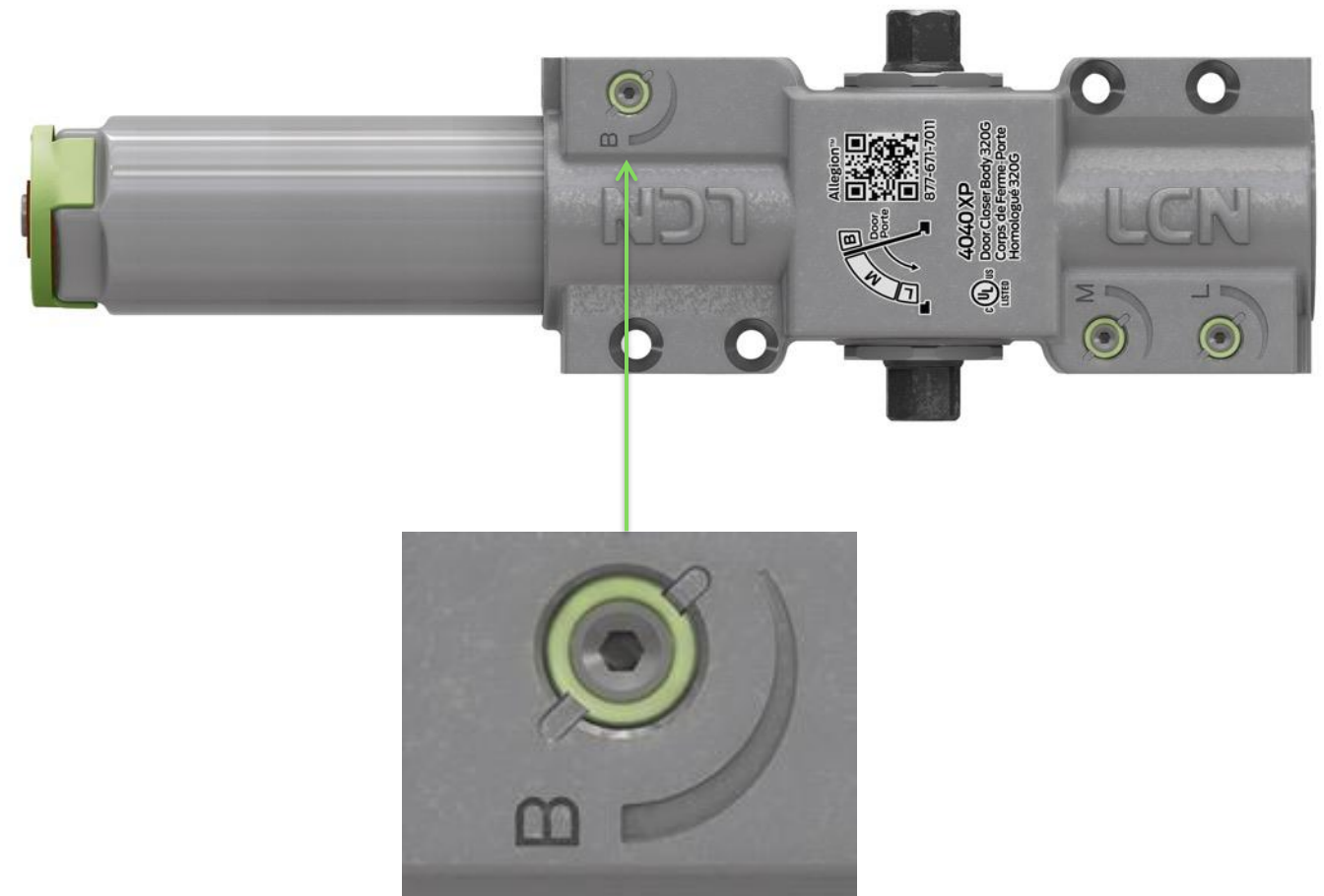
4040XP Key Features

Regulation Valve Indicator

Patented technology that provides a visual to prevent backing out screw, which can cause leakage

Benefits

- Provides visual to prevent backing out screw, which can cause leakage
- Highlights the position of the screw with an enhanced visual marker



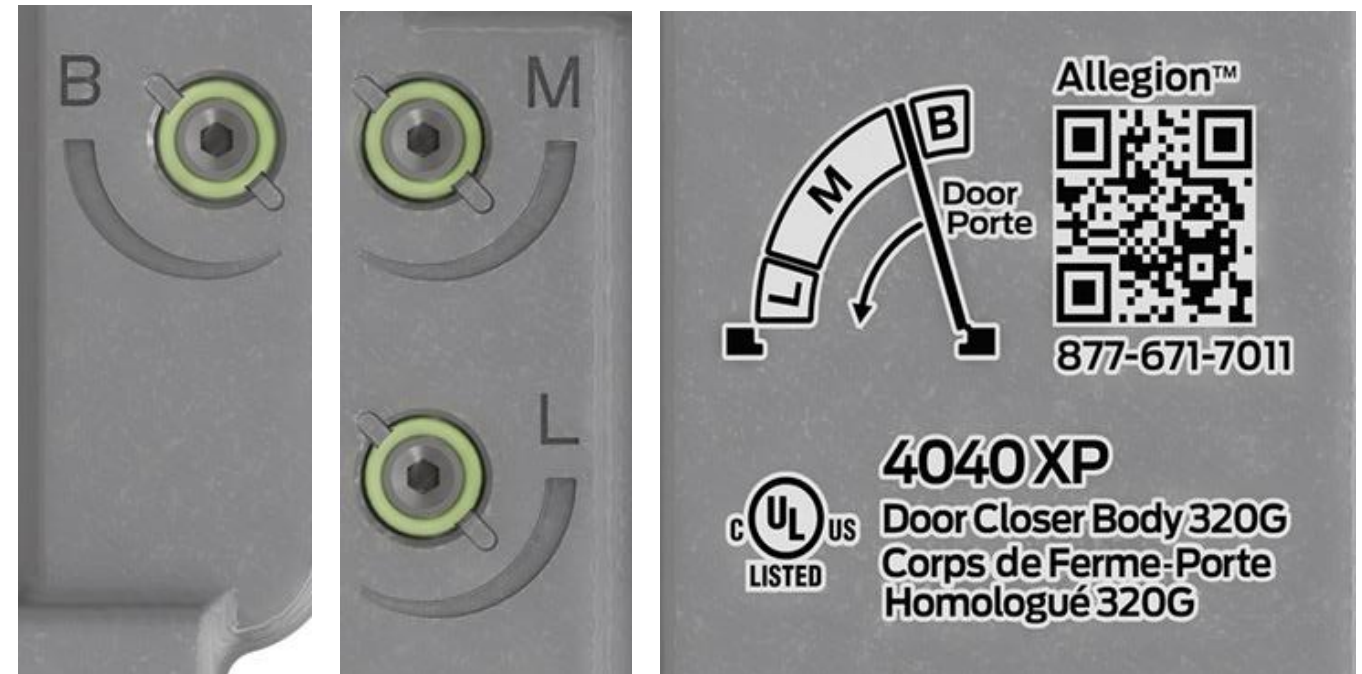
4040XP Key Features

Adjustment Labels

Labeling of Latch (L), Main (M), and Back Check (B) valves and corresponding diagram of door swing zones make adjustments quick and clear

Benefits

Aids in adjustment



4040XP Key Features

Casting Design and Logo

Unique casting shape

- Addition of LCN logo
- Visually differentiates from knock-off designs and quickly identifies LCN

Benefits

- Visually differentiates from look-alike competitor versions
- Quickly identifies the manufacturer/brand



4040XP Key Features

LCN Green Dial

Provides intuitive visual updates during adjustments for easy configuration

Benefits

Simple and clear adjustments to reduce maintenance time.



4040XP Key Features

Digital Resources

QR code that links to digital and interactive resources, including adjustment instructions, component descriptions, mounting options and a toll-free number for technical support

Benefits

Offers on-the-spot, self-service support, making installation and adjustment easier



Scan to view on-the-spot, self-service support resources including adjustment guides, mounting options, and component descriptions.

4040XP Key Feature Summary

- Unique casting shape/logo
- Snap-on cover
- Updated Green Dial
- Patented positive stop
- Patented regulation valve indicators
- Graphic visuals and indicators
- QR code for tech support
- Packaging that clearly labels the parallel arm (PA) selector valve
- Cast iron cylinder
- Single-piece, heat-treated forged steel arms
- Heat-treated 1-1/2-inch diameter piston
- Double heat-treated steel pinion
- Captured, full complement bearings
- All-weather Liquid X hydraulic fluid
- Non-PRV (pressure relief valve) design
- Powder coat finish
- Peel-n-stick template
- Independent speed adjustments
- Universal non-handed design
- Full range of mount and arm options
- Adjustable spring sizes
- 30-year warranty

4040XP Key Feature Summary





4040XP Built to Last



When it comes to heavy-duty closers, no other closer is like the LCN 4040XP. It's built to last a lifetime—all while delivering remarkable value in a variety of applications.

Common Applications



Schools



Hospitals



**Commercial
Buildings**



**Government
Buildings**

In Our Customers' Words

”

Our district made the decision to exclusively use LCN door controls over 10 years ago. When it's time to replace failing hardware from another manufacturer, we always install a new LCN closer—typically the 4040XP. I'm thankful for the service Allegion offers—the district made the right decision.”

– Don Wilkerson, Maintenance, Illinois School District

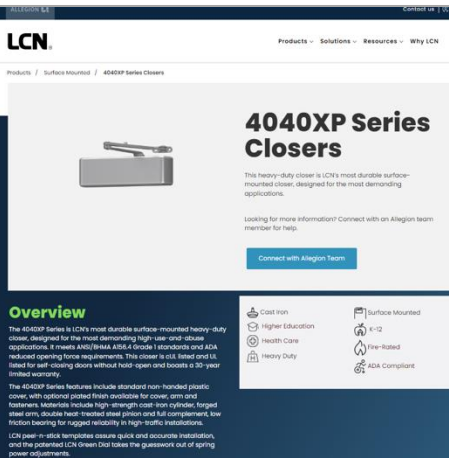


Support Where You Need It



With LCN, you can feel confident that you have the right product for the right application — all designed with the safety and security you expect.

Resources



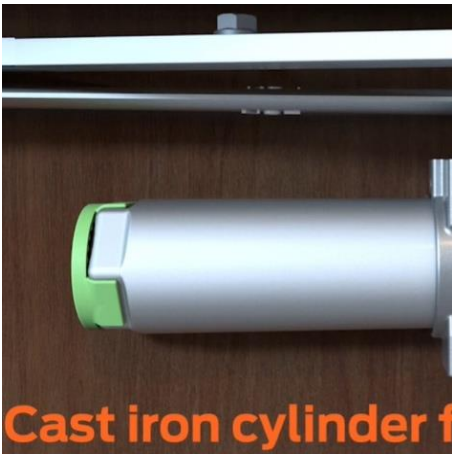
Webpage: lcnclosers.com/4040XP



[LCN Purpose of a Closer Video](#)



[LCN 4040XP Enhancements Video](#)



[LCN 4040XP Product Feature Video](#)



[Brochure](#)



[LCN 4000 Series Catalog Section](#)



[Infographic](#)



[Cut Sheet](#)



[QR Code Site with Interactive Instructions](#)



[Installation Instructions](#)



LCNClosers.com

© 2025 Allegion plc
017177, Rev. 04/25