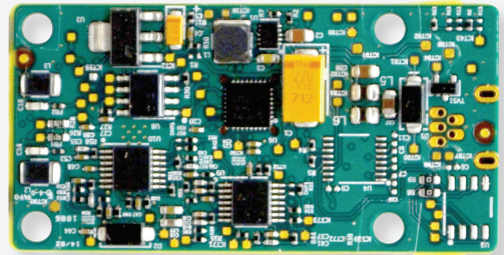


OEM 200 Module



Overview

Today's customers want to extend the use of credentials beyond physical access control to maximize their investment and provide the added convenience of using a single credential for multiple applications. To help meet customers' needs, the OEM 200 module can be embedded into third-party products so that solution providers can seamlessly support RFID technology as part of their offering.

An 80mm antenna is available in a multi-technology version that combines 125kHz proximity and 13.56 MHz smart card technology. The multi-technology antennas interface with Schlage® smart credentials (MIFARE Classic®, MIFARE Plus® and MIFARE® DESFire® EV1) and can read the card serial numbers (CSN) of a variety of smart cards from other manufacturers. Additionally, the OEM 200 module is already NFC compatible and able to communicate with NFC-enabled phones.

The OEM 200 has been designed for easy integration, but should you need any assistance, our knowledgeable application engineering team is ready to assist you with any design or technology questions you may have.

Features & Benefits

- Multi-technology version: Reads 125 kHz proximity credentials and 13.56 MHz smart credentials
- Compatible with NFC-open smart phones using Schlage or aptiQ mobile credentials
- Wiegand and UART-TTL output available for simple interface with most third-party products
- Antenna connects easily to main board with flat flexible cable (FFC) (provided)
- LEDs for debugging and diagnostics
- Allegion integration support

| OEM200 Specifications | | |
|------------------------|---|--|
| Dimensions | Main board | 1.11" x 2.165" x 0.39" (28.0mm x 55.0mm x 9.9mm) |
| | 80mm antenna board | 1.35" x 3.125" x 0.14" (34.3mm x 79.4mm x 3.4mm) |
| 125 kHz Technologies | Schlage and XceedID proximity | |
| | GE/CASI ProxLite* | |
| | HID* Proximity | |
| | AWID* Proximity | |
| 13.56 MHz Technologies | Schlage and aptiQ* using MIFARE Classic, MIFARE DESFire EV1 (with PACSA enabled) or MIFARE Plus | |
| | Schlage and aptiQ mobile credentials | |
| | PIV (FASC-N output options) | |
| | PIV-1 (GUID output options) | |
| | CSN for HID iCLASS*, ISO 15693, ISO 14443 | |

| Card read range in free space ¹ | | |
|--|---|-------------|
| Card | Card type | Read range |
| 125 kHz | ASK, FSK | Up to 2.75" |
| 13.56 MHz | ISO 15693 | Up to 2.75" |
| 13.56 MHz | ISO 14443A MIFARE Standard | Up to 3.25" |
| 13.56 MHz | ISO 14443A MIFARE DESFire EV1 | Up to 1.25" |
| 13.56 MHz | ISO 14443A MIFARE Plus | Up to 1.0" |
| Electrical specifications | Operating temperature: -31 to 149°F (-35 to 65°C) | |
| | Frequency: 125 kHz and 13.56 MHz | |
| | Voltage input: 5-16V | |
| | Average system current: 50 mAmps (180 mAmps max) | |
| Communication: Wiegand or UART-TTL | | |

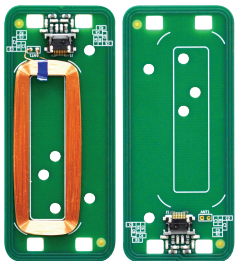
1. Antenna location inside end product and surrounding materials will affect the read range performance.

Ordering Information

Part # OEM200 TTL (module)

47259227 OEM200 80mm Antenna Multi-tech

Antenna Option:



80 mm antenna
(multi-technology)

Allegion, the Allegion logo, Schlage and the Schlage logo are trademarks of Allegion plc, its subsidiaries and/or affiliates in the United States and other countries. All other trademarks are the property of their respective owners.