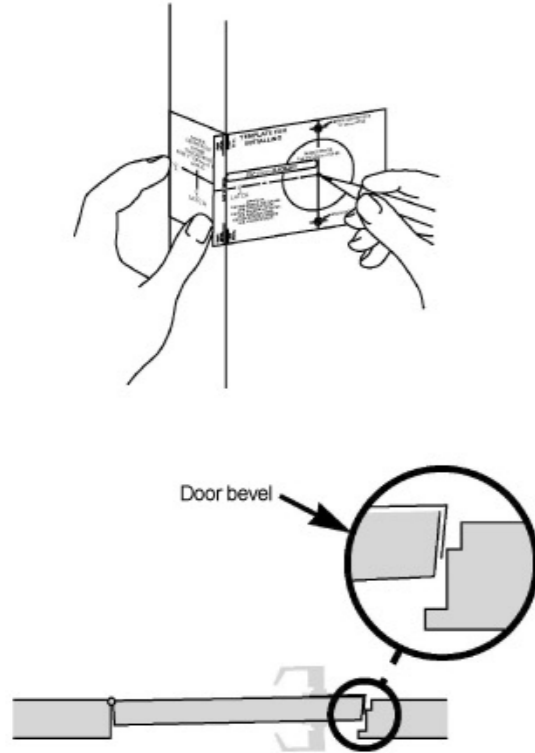


Instructions For Installing Heavy Duty Lever Lockset

Screw Type Through-Bolts are provided and recommended for use on high frequency doors.

NOTE : Accurate door preparation is essential for proper functioning of this lock. Follow template and instructions carefully.

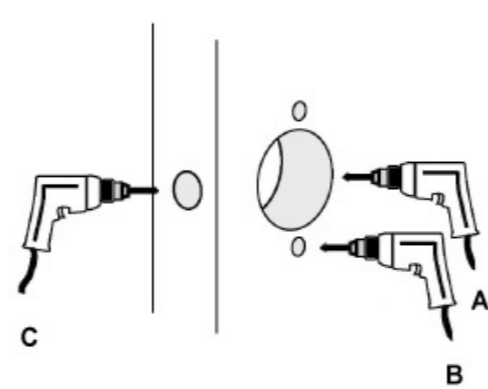
Door and jamb preparation



1. Mark door

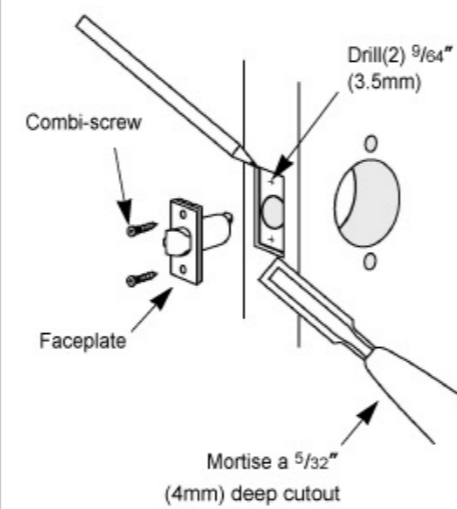
- A. Check lock for proper backset before marking.
NOTE : Through- Bolts are provided and recommended for use on high frequency doors.
 B. Detach stub.
 C. Fold template at correct marking for door bevel of door (high or low bevel, or flat).
 D. Position template at correct height (recommended height for centerline is 38" (97cm) from floor). Mark center for 2 1/8" (54mm) hole.
 E. Also mark for (2) 5/16" (8mm) holes for mounting screws.
 G. Use stub to mark center of door thickness.
HINT : For retrofitting existing lock holes, fold template in half to position for the mounting screw.

2. Drill holes



- A. Drill a 2 1/8" (54mm) hole through door (from both sides to avoid damaging door).
 B. Drill (2) 5/16" (8mm) holes for through-bolt for locks No through - bolt type
NOTE : Do not drill the (2) 5/16" (8mm) holes for locks No through - bolt type
 C. Drill a 1" (25mm) hole in door edge.

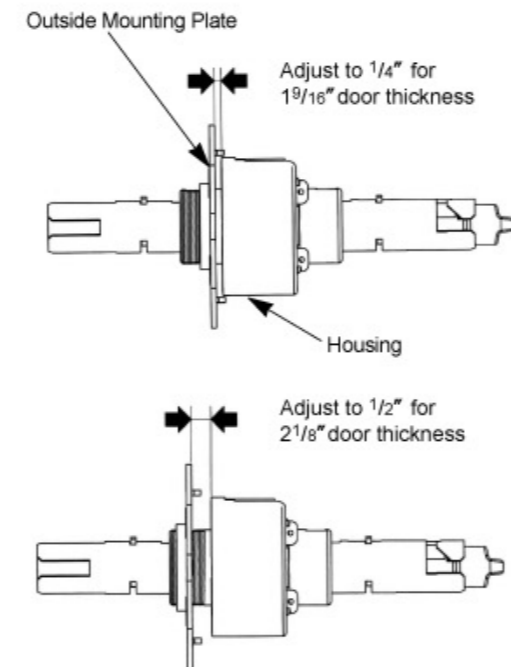
3. Install latch



- A. Insert latch into hole. Trace around faceplate
 B. Chisel out wood until faceplate fits flat with door edge.
 C. Drill (2) 9/64" (3.5mm) holes and secure latch unit with combi-screws supplied.
 D. Fasten latch to door so that beveled side of latchbolt faces jamb.

6. Adjust for door thickness

LOCKSET IS FACTORY PRESET FOR 1 3/4" (45mm) DOORS.

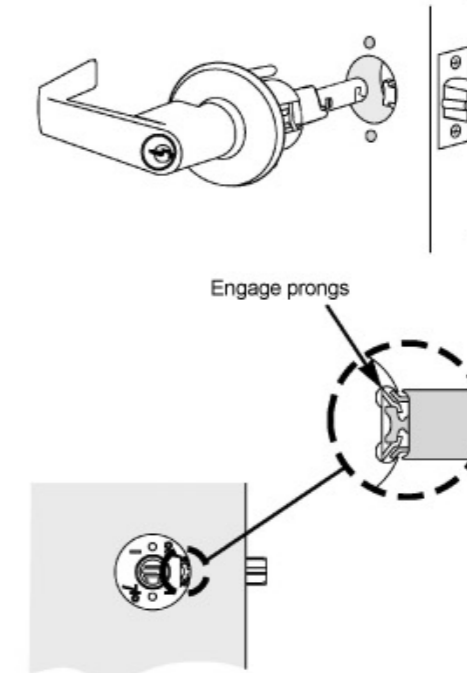


- It can be adjusted for door thickness range from 1 9/16" up to 2 1/8"**
 For adjustment of nonstandard door thickness, follow step 11, then :
 A. Rotate outside rose plate for proper door thickness as shown left.
 B. Assemble outside rose assembly onto chassis while inserting inner posts through holes in the plate.
 C. Insert spacer bushing and assemble outside lever by reversing procedure.

NOTE: See Step 11, must be done if you have to make adjustments for door thickness

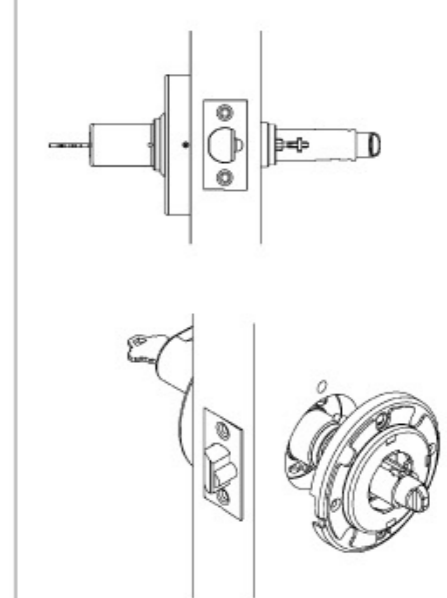
ADJUSTMENT FOR DOOR THICKNESS

7. Install outside unit



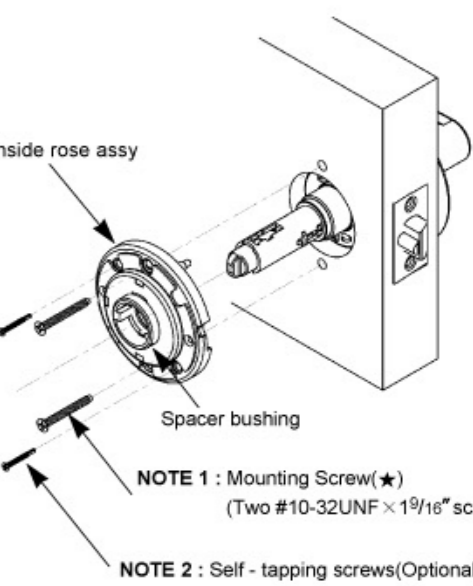
IMPORTANT : Place outside lock unit into position. Make sure that latch prongs engage chassis housing, and retractor engages latch bar

8. Install inside rose assembly

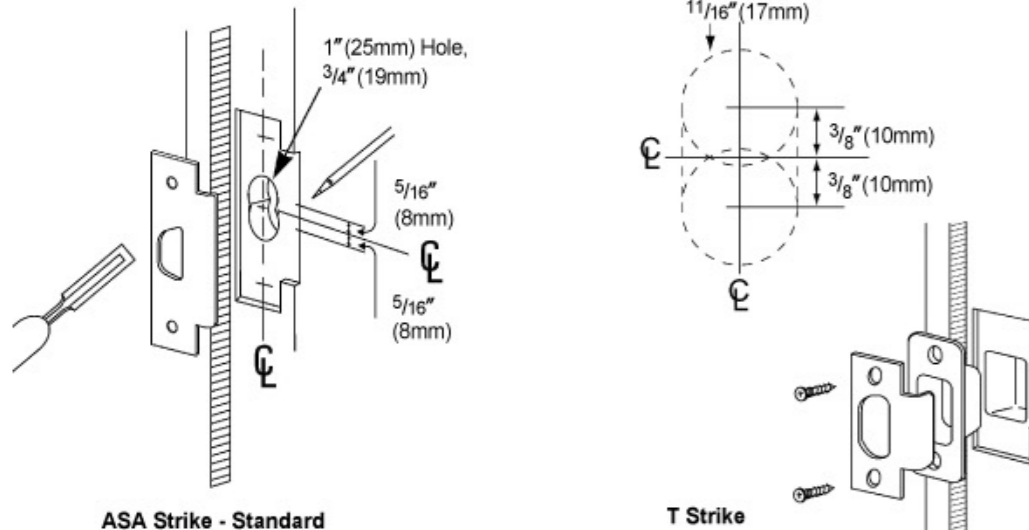


- A. Hold outside unit in place.
 B. Put inside rose assembly into position on chassis.
 C. Insert and tighten mounting screws (★) (two #10 - 32UNF x 1 9/16" screws provided)
 D. And may secure more with 2 self - tapping screws(provided) onto door surface at user discretion.
 E. Put on rose cover and rotate clockwise.

CAUTION : When using power screwdriver for installation, set to minimum torque setting.



4. Install strike

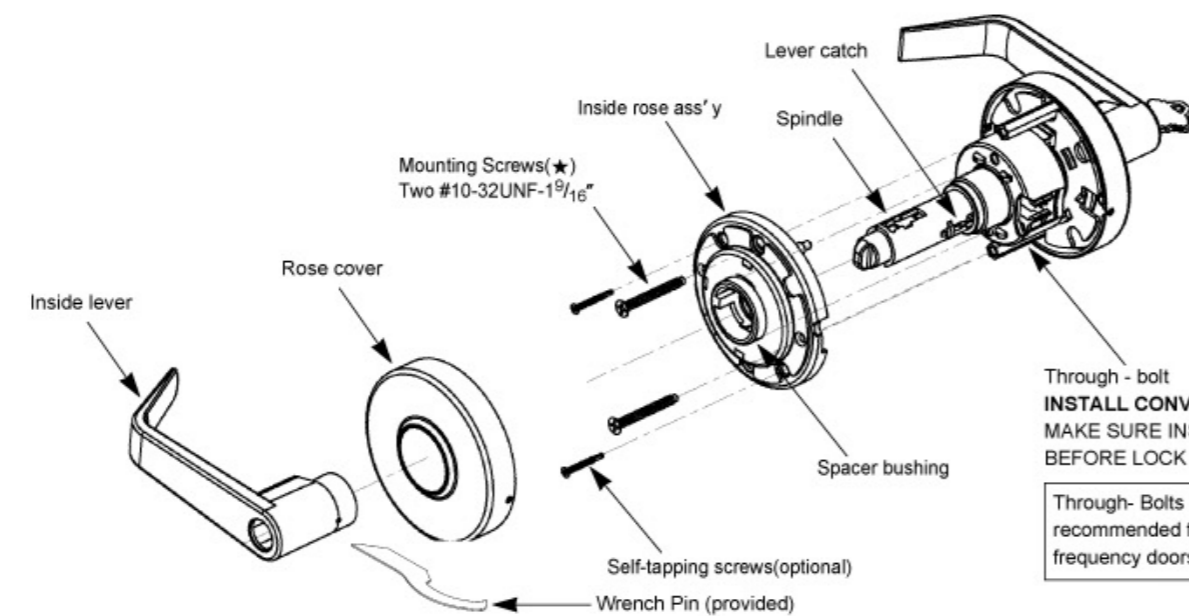


- A. Mark vertical line and heightline on jamb exactly opposite center of latch hole.
 B. Drill (2) 1" (25mm) holes, 3/4" (19mm) deep, 5/16" (8mm) above and below heightline.
 C. Use strike plate to pattern for cutout. Clean out hole and install strike.

- A. Mark vertical line and heightline on jamb exactly opposite center of latch hole.
 B. Drill (2) 7/8" (22mm) holes, 1 1/16" (17mm) deep, into doorjamb as shown.
 C. Mortise a cutout for the strike. Use strike as a pattern for the mortise.
 (Strike should fit flush with the doorjamb.)

Lock Installation

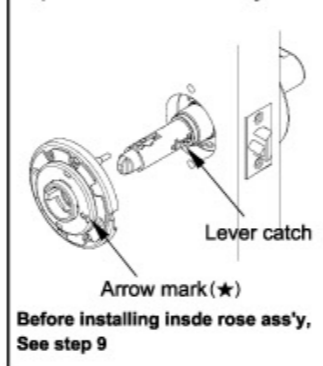
NOTE : Use Mounting screws(★) (two #10-32UNF-1 9/16" provided screws) in installing convertible thru bolt.



- A. Push to depress lever catch and remove lever.
 B. Rotate inside rose cover to remove cover and rose ass'y.
 C. Insert the convertible thru bolts(provided), if not pre-installed, into tapped holes in the outside rose ass'y.

5. Disassemble inside trim

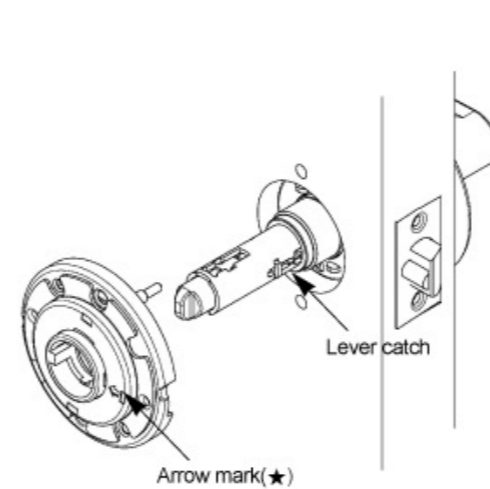
Tip for Inside rose ass'y



Through - bolt
INSTALL CONVERTIBLE THRU BOLTS
 MAKE SURE INSTALL THRU BOLTS
 BEFORE LOCK INSTALLATION

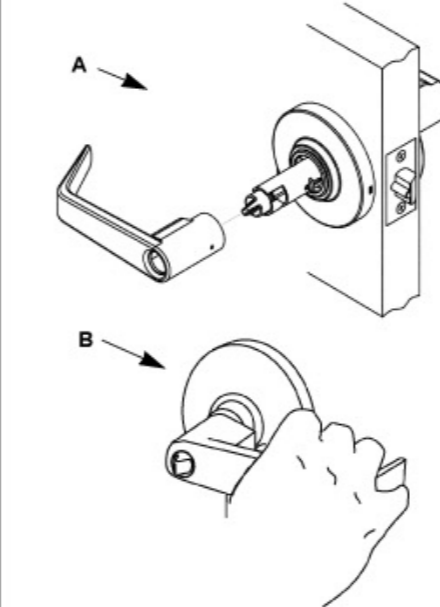
Through- Bolts are provided and recommended for use on high frequency doors.

9. Tip for inside rose ass'y



- A. When putting inside rose assembly into position on chassis, it needs to align the direction of arrow mark(★) with lever catch.

10. Install inside lever

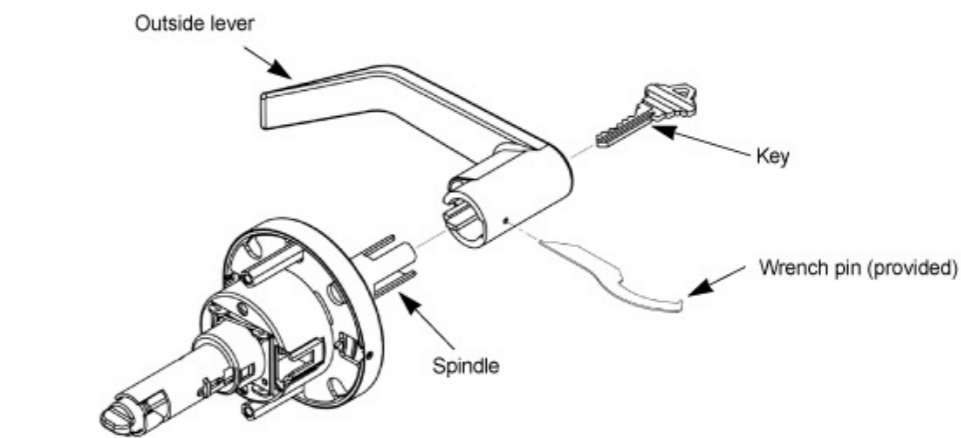


- A. Slide inside lever onto spindle.
 Push lever completely into place. (Pull on lever to make sure that catch is fully engaged.)
 B. Test operation of lock to make sure you have followed instructions correctly.

How to remove & reassemble outside lever

11. Remove outside lever

NOTE: Required if you re-key the lock or adjust the door thickness (See Step 6)



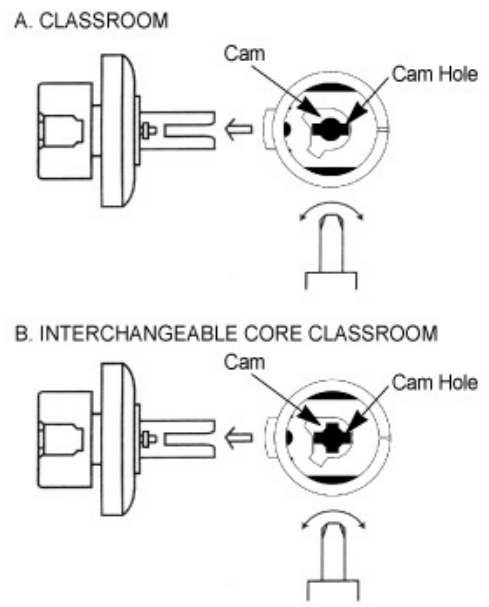
- A. Insert key into cylinder. Insert wrench pin(provided) into hole in lever. Turn key one - quarter turn and push pin to depress lever catch. Slide the lever from spindle.

12. Reassemble outside lever

Reverse Step 11 to reassemble levers.

- A. To reassemble. Put a cylinder and key in lever.
 B. Push cylinder further in until it engages retractor.
 C. Turn key 90° clockwise and hold a key.
 D. Depress lever catch and push lever (Not key) in until it clicks then release a key.

CAUTION FOR CLASSROOM FUNCTION



- (1) Locking: Turn key 360 degree counter - clockwise.
 (2) Unlocking: Turn key 360 degree clockwise.

(★) Make sure to turn cam counter clockwise with a screw driver as far as it will go before reassembling of cylinder to prevent mis-positioning of cam for classroom function.