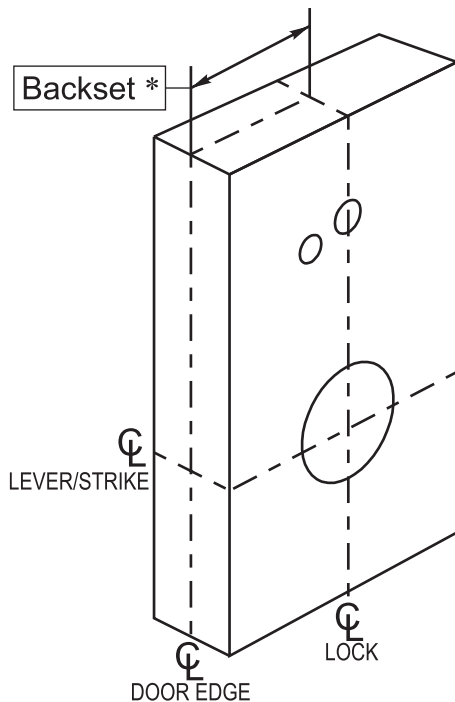
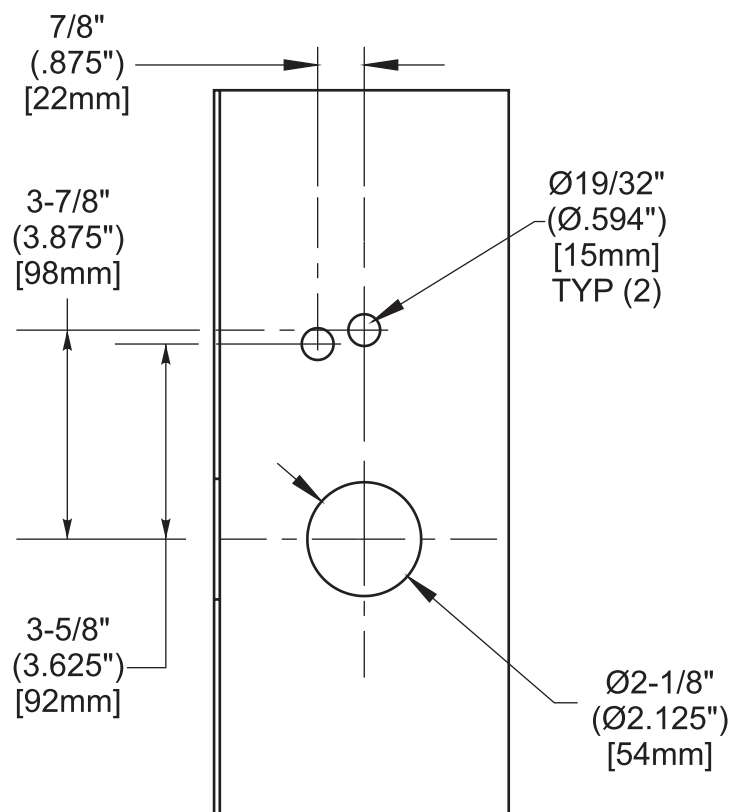


### DOOR PREP

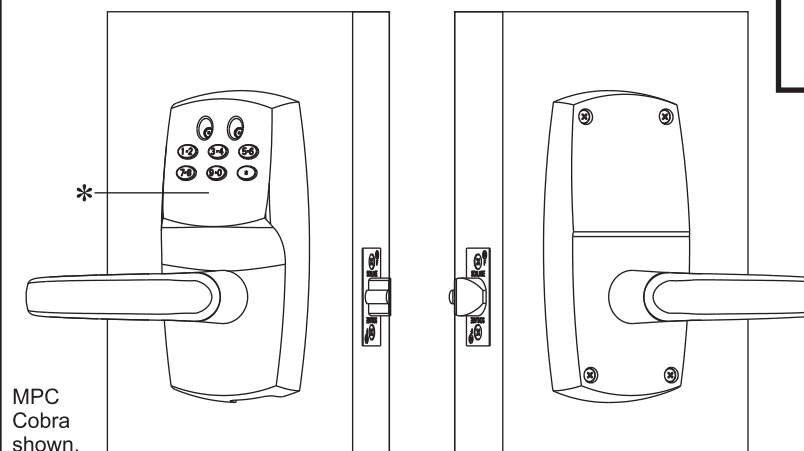
Mark on **INSIDE** of door



\* **BACKSET IS MEASURED FROM CENTER OF BEVEL**

|           |               |
|-----------|---------------|
| OLB       | 2-3/8" [60mm] |
| SLB & ELB | 2-3/4" [70mm] |

# SCHLAGE



## COBRA SERIES

(Cylindrical)  
Manually Programmable (MP)  
&  
Software Programmable (SP)

### Customer Service

1-877-671-7011 [www.allegion.com/us](http://www.allegion.com/us)



© Allegion 2015  
Printed in U.S.A.  
57010 Rev. 05/15-k

## INSTALLATION INSTRUCTIONS

### INTRODUCTION

This manual covers the complete hardware installation of all models in the MPC Cobras and SPC Cobras series of cylindrical locks.

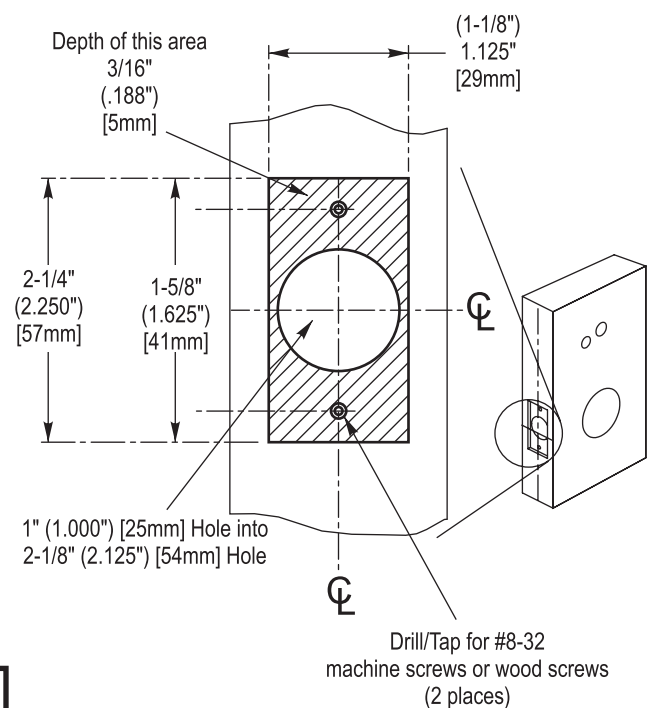
### NOTES:

- Illustration on pages 2 and 3 shows a LHR installation, but yours might be different.
- For manual programming instructions, see the programming guide.
- Do not overtighten fasteners.

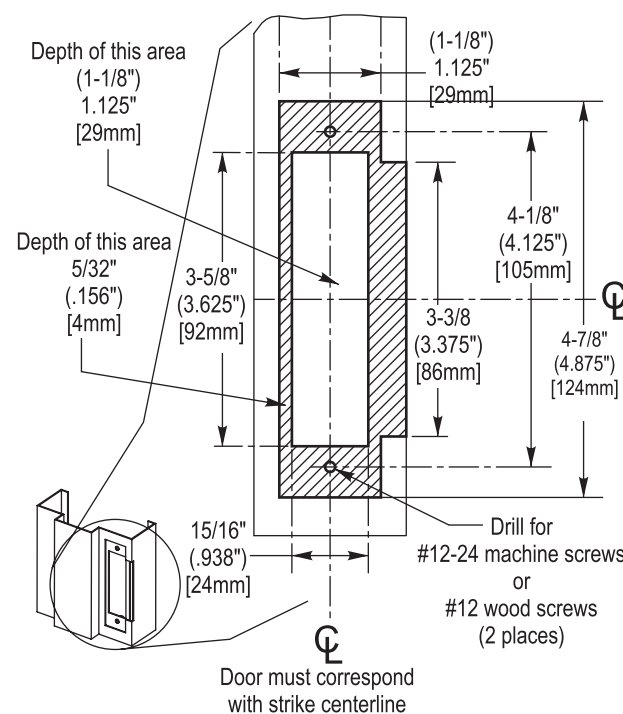
### NON-SUPPLIED TOOLS & MATERIALS NEEDED

- Philips head screwdriver set
- Power Drill with 3/8" chuck
- Drill bit set (up to 1")
- 1-1/4" Hole saw w/mandrel
- Allen wrench set
- Square (90 degrees)
- Threadlocker (Loctite 242 recommended)
- Tape Measure
- Pencil
- Center Punch
- Hammer
- Chisel
- Level
- Masking tape
- Spanner screw tool

### LATCH PREP



### FRAME PREP



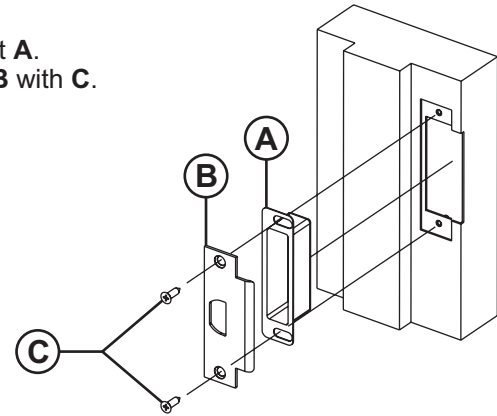
See Back Cover for:  
Door, Frame and Latch Preparation

\* An SPC Cobra has iButton receptacle directly below 9-0 button.

This device complies with part 15 of FCC rules.  
Operation is subject to following two conditions:  
(1) This device may not cause harmful interference.  
(2) This device must accept any interference received, including any interference that may cause undesired operation. Changes or modifications not expressly approved by party responsible for compliance could void user's authority to operate equipment.

After door & frame have been prepared, refer to illustration below and install strike components into door frame in following order :

- 1 - Insert **A**.
- 2 - Place **B** against **A**.
- 3 - Secure **A** and **B** with **C**.



After strike components have been installed, refer to illustration on right and assemble lock components onto door in following order :

- 1 - Insert **D**.
- 2 - Secure **D** with **E**.
- 3 - Remove **F** from **H**.
- 4 - Remove **G** from **H**.
- 5 - From inside of door, insert **H**.

**NOTE:** Refer to **Detail D-A**. Latch Tabs (**I**) to engage with Retractor Claws (**J**).

- 6 - From outside of door, install **G** onto **H**.
- 7 - Secure **G** with **F**.

Refer to **Detail D-B** if handing must be changed:

- Using **K** (5/32" hex wrench), remove **L**.
- Remove and rotate **M** by 180 degrees.
- Slide **M** back onto shaft.
- Apply threadlocker to **L**.
- Using **K**, reinstall **L**.

**IMPORTANT:** If IC Core must be replaced, refer to instructions on page 3 before continuing.

- 8 - Apply sticky side of **N** to **O**.

**NOTE:** **P** to go thru proper hole in **N**.

- 9 - Refer to **Detail D-C** and verify that **Q** is at bottom.
- 10 - Insert appropriate **R** (refer to **Chart C-A**) into **S**.
- 11 - Insert **P** through **T**.
- 12 - Place **O** against door.
- 13 - Place **V** against **X**.
- 14 - Doors thinner than 1-3/4" [44mm], place **W** against **X**.
- 15 - Feed **P** through **X** (or **W/X**).
- 16 - Place **X** (or **W/X**) against door.
- 17 - Secure **X** with **Y** and **Z**.
- 18 - Insert **Aa** into **Ba**.
- 19 - Insert **Ba** into **U**.
- 20 - Connect **P** to **Ca**.
- 21 - Install 4, AA batteries into **Da** (observe polarity).
- 22 - Place **Fa** over **X**.
- 23 - Secure **Fa** with **Ga**.

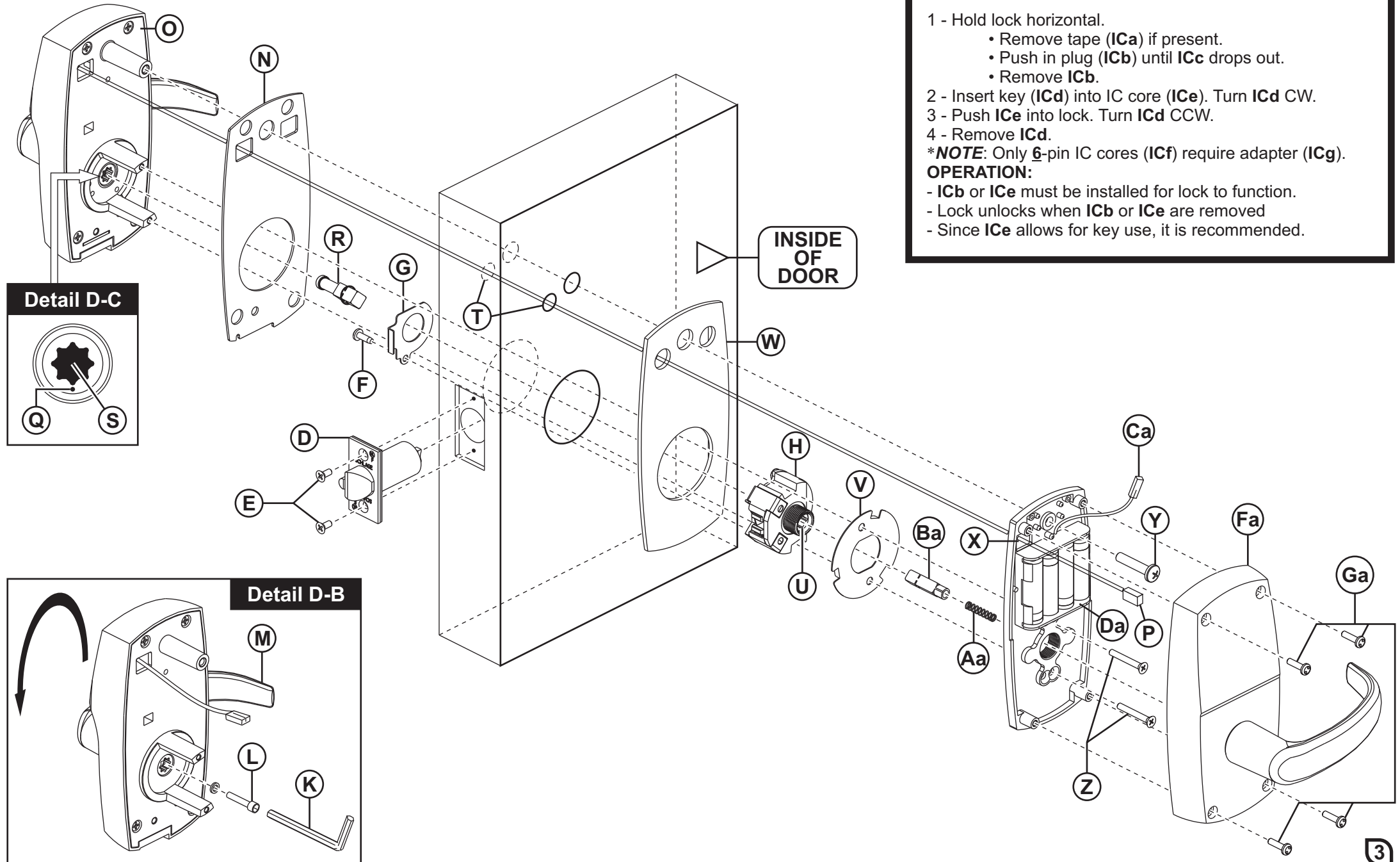
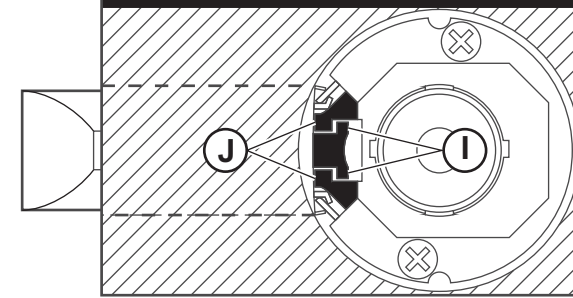
Installation of hardware complete.

See Cobra Series Programming Guide for programming lock.

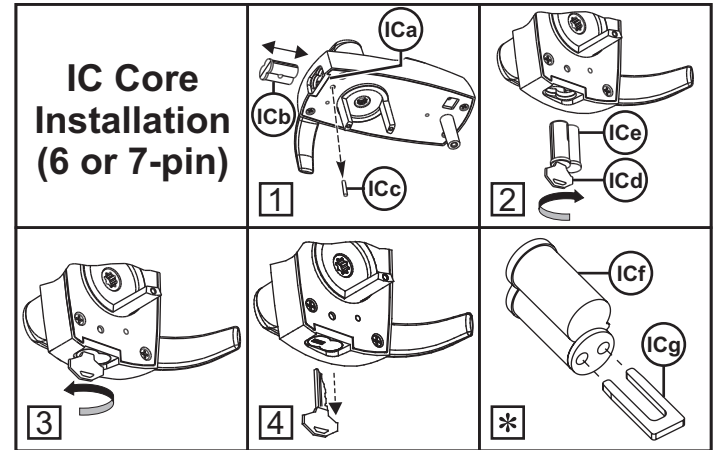
Chart C-A

| Door Thickness                              | Use   |
|---|---|
| 1-1/2"-1-3/4"<br>(1.50"-1.75")<br>[38-44mm] | Short Spindle (Yellow)<br>                          |
| 1-7/8"-2"<br>(1.88"-2.00")<br>[48-51mm]     | Long Spindle* (Black)<br><br>*Long Spindle has band |

Detail D-A



IC Core Installation (6 or 7-pin)



- 1 - Hold lock horizontal.
    - Remove tape (**ICa**) if present.
    - Push in plug (**ICb**) until **ICc** drops out.
    - Remove **ICb**.
  - 2 - Insert key (**ICd**) into IC core (**ICe**). Turn **ICd** CW.
  - 3 - Push **ICe** into lock. Turn **ICd** CCW.
  - 4 - Remove **ICd**.
- \***NOTE:** Only 6-pin IC cores (**ICf**) require adapter (**ICg**).
- OPERATION:**
- **ICb** or **ICe** must be installed for lock to function.
  - Lock unlocks when **ICb** or **ICe** are removed
  - Since **ICe** allows for key use, it is recommended.