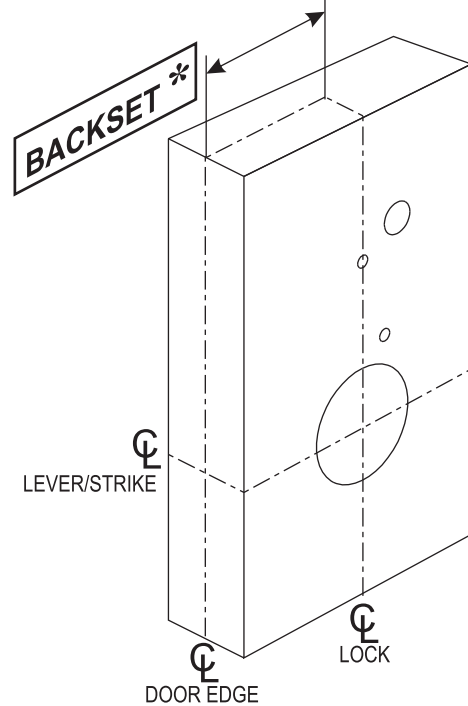
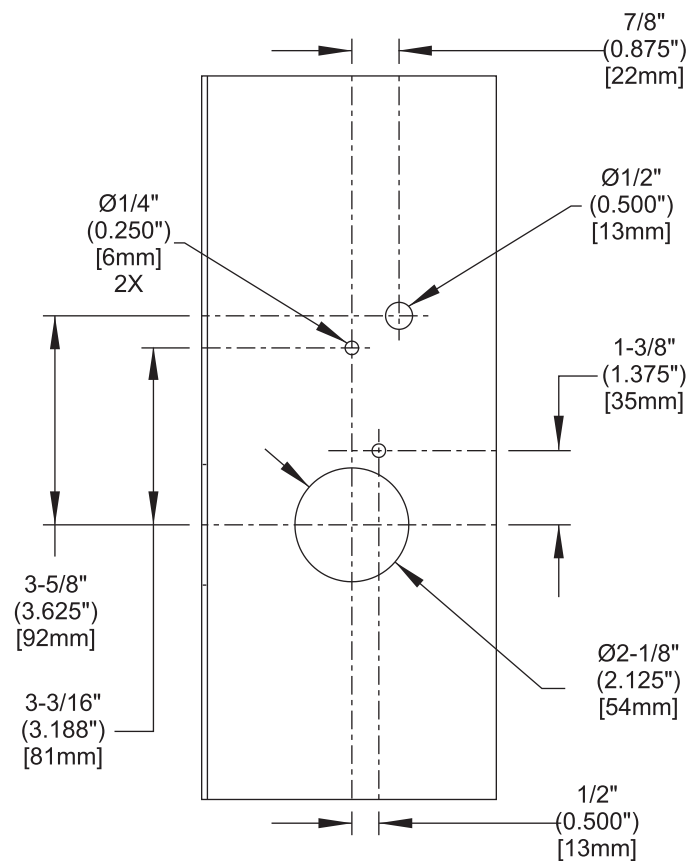


### DOOR PREP

Mark and Drill on **INSIDE** of door

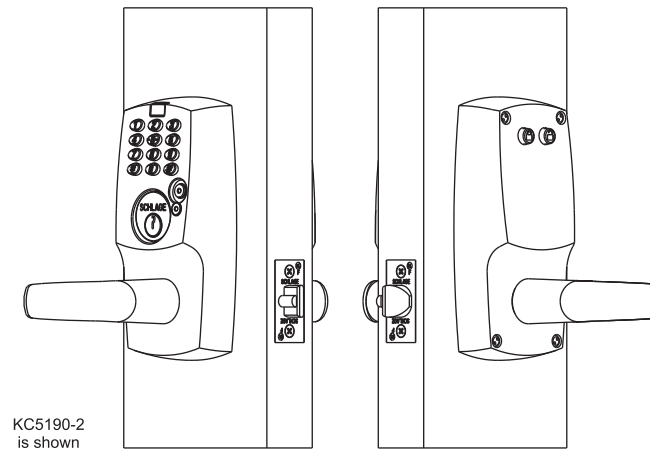


**\* BACKSET IS MEASURED FROM CENTER OF BEVEL**

OLB	2-3/8" [60mm]
SLB & ELB	2-3/4" [70mm]



## KC2 5000 SERIES CYLINDRICAL Manually & Computer Programmable Locks



**Customer Service**  
1-877-671-7011 [www.allegion.com/us](http://www.allegion.com/us)



© Allegion 2015  
Printed in U.S.A.  
57038 Rev. 05/15-k

### INSTALLATION INSTRUCTIONS

#### INTRODUCTION:

This manual covers the complete hardware installation of all models of the KC2 5000 Cylindrical Lock Series.

#### NOTES:

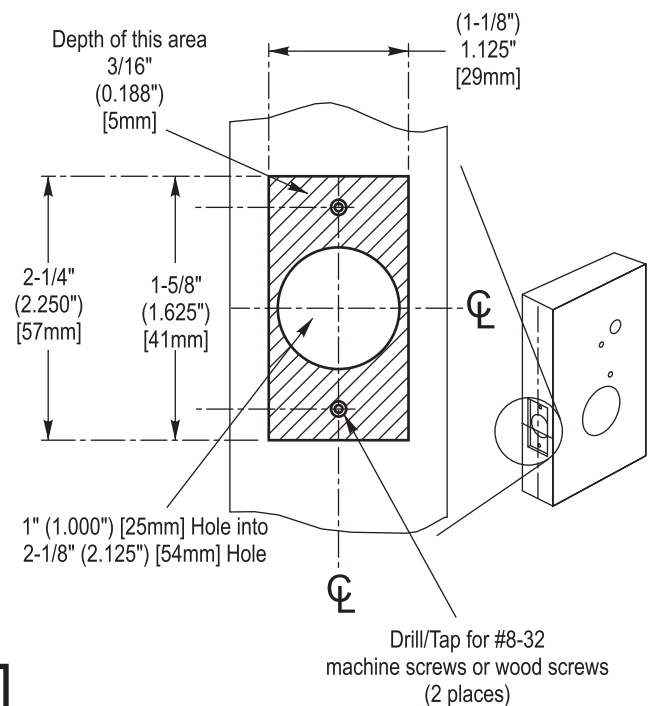
- Illustration on pages 2 and 3 shows a LHR installation, but yours might be different.
- Key cylinder to be 1-1/8" [29mm] or longer with Schlage "Classic" (P/N B502-191) or Schlage "Everest" (P/N B502-948) or equivalent cam.
- Do not overtighten fasteners.
- If cylinder key does not work properly, check that cylinder and appropriate cylinder cam are installed in correct position.

#### NON-SUPPLIED TOOLS & MATERIALS NEEDED:

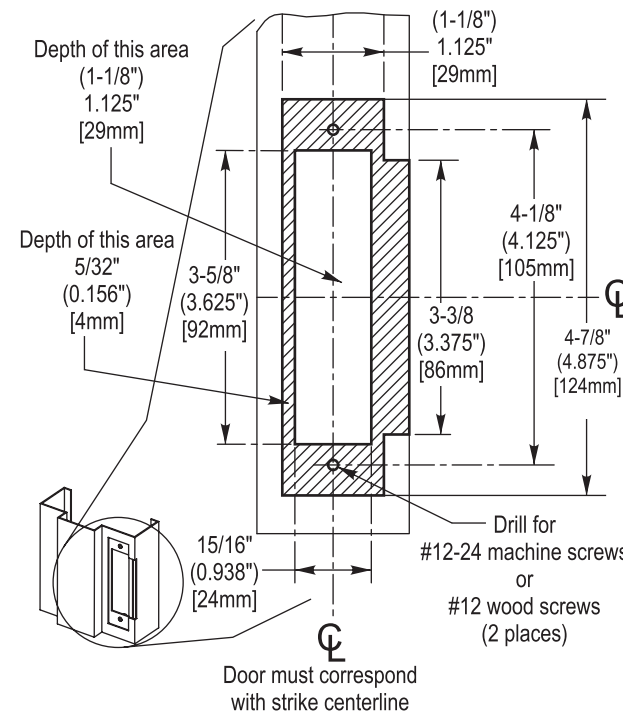
- Philips head screwdriver set
- Power Drill with 3/8" [10mm] chuck
- Drill bit set
- 1" [25mm] spade bit or hole saw
- 2-1/8" [54mm] hole saw
- Hex wrench set
- Square (90 degrees)
- Threadlocker (Loctite 242 recommended)
- Tape Measure
- Pencil
- Center Punch
- Hammer
- Chisel
- Masking tape
- Level

**See Back Cover for Door & Frame Prep**

### LATCH PREP



### FRAME PREP



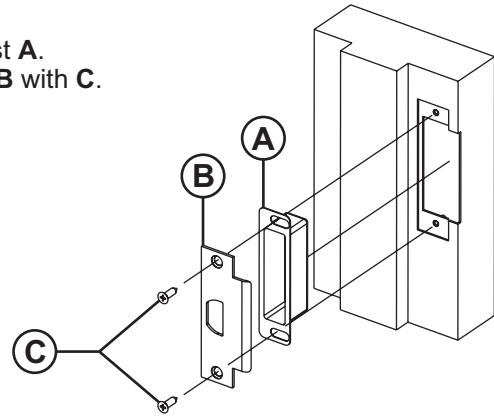
#### BLOCKING RING TABLE

Key Cylinder Length	Blocking Ring (Schlage P/N: XXX=finish)
1-1/4" [32mm]	1/8" [3mm] (36-079-012-XXX)
1-3/8" [35mm]	1/4" [6mm] (36-079-025-XXX)
1-1/2" [38mm]	3/8" [10mm] (36-079-037-XXX)
1-5/8" [41mm]	1/2" [13mm] (36-079-050-XXX)

This device complies with part 15 of FCC rules. Operation is subject to following two conditions:  
(1) This device may not cause harmful interference.  
(2) This device must accept any interference received, including any interference that may cause undesired operation. Changes or modifications not expressly approved by party responsible for compliance could void user's authority to operate equipment.

After door & frame preparation, refer to illustration on right & assemble lock components onto door & frame in following order:

- 1 - Insert **A**.
- 2 - Place **B** against **A**.
- 3 - Secure **A** and **B** with **C**.



After strike components have been installed, refer to illustration on right and assemble lock components onto door in following order :

- 1 - Insert **D**.
- 2 - Secure **D** with **E**.
- 3 - Install Key Cylinder (**F**):
  - If **F** is longer than 1-1/8" [29mm], slide **G** over **F** (refer to **BLOCKING RING TABLE** on page 1).
  - Insert **F** into **H**.
  - Slide **I** over **F**.
  - Using **J**, screw **K** onto **F** until tight.
  - Line up nearest notch on **K** with tab on **I**.
  - Bend tab on **I** into notch of **K**.

Refer to **Detail D-A** if handing must be changed:

- Using **L** (5/32" [4mm] hex wrench), remove **M**.
- Remove and rotate **N** 180 degrees.
- Slide **N** back onto shaft.
- Apply threadlocker to **M**.
- Using **L**, reinstall **M**.
- Repeat for other escutcheon.

- 4 - Remove **O** and **P** from **Q**.
- 5 - Refer to **Detail D-B** and verify that dot (**R**) is at bottom.
- 6 - Insert round end of appropriate **S** (refer to **Chart C-A**) into **T**.
- 7 - Slide **Q** fully onto **S**.
- 8 - Feed **U** through door (hole **V**).
- 9 - Place **H** against door.

**NOTE:** Refer to **Detail D-C**. Latch Tabs (**W**) to engage with Retractor Claws (**X**).

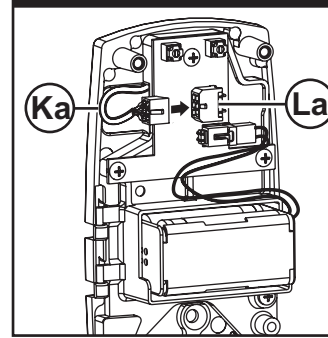
- 10 - Place **P** onto **Q**, secure with **O**.
- 11 - Insert **Y** into **Z**.
- 12 - Insert square end of **Z** into **Aa**.
- 13 - Place **Ba** against **Ca**.
- 14 - Doors thinner than 1-3/4" [44mm], place **Da** against **Ca**.
- 15 - Feed **U** through **Ca** (or **Da/Ca**).
- 16 - Place **Ca** against door, secure with **Ea** and **Fa**.
- 17 - Refer to **Detail D-D** to install batteries:
  - Remove **Ga** from **Ca**.
  - Swing **Ha** away from **Ca**.

CONTINUED ON PAGE 3...

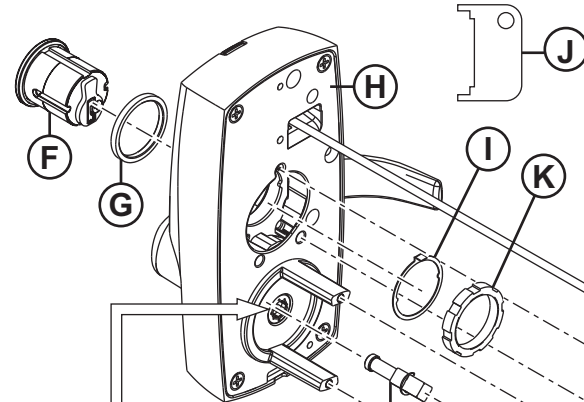
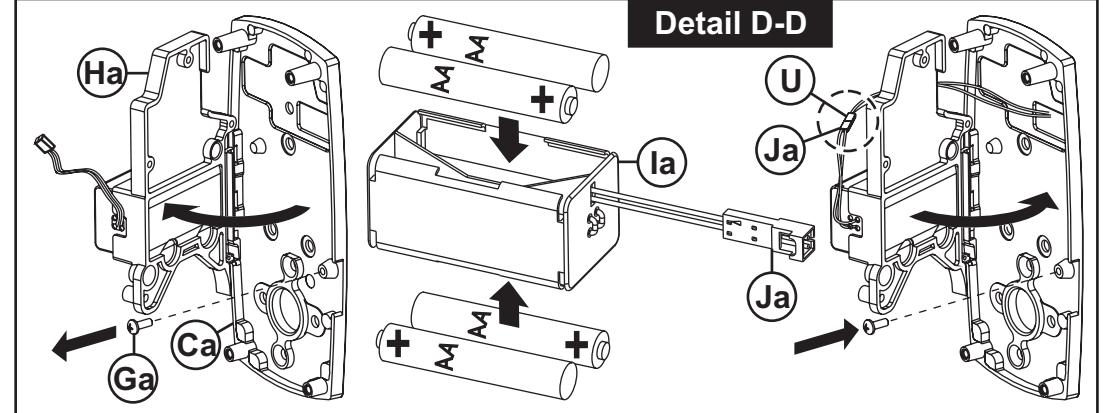
Chart C-A

Door Thickness	Use
1-1/2"-1-3/4" (1.50"-1.75") [38-44mm]	Short Spindle (Yellow) 
1-7/8"-2" (1.88"-2.00") [48-51mm]	Long Spindle* (Black)  *Long Spindle has band

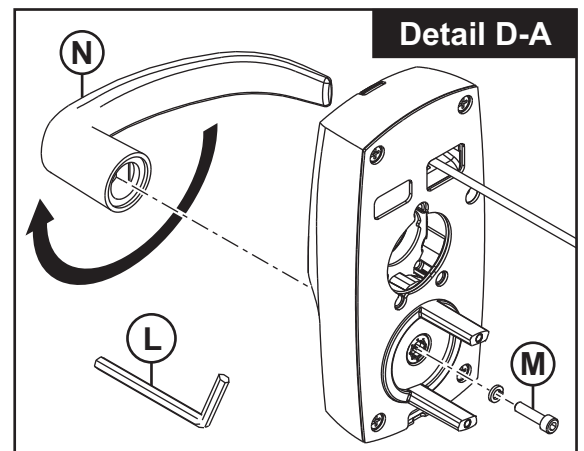
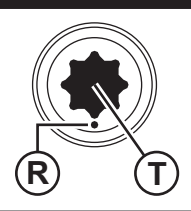
Detail D-E



Detail D-D

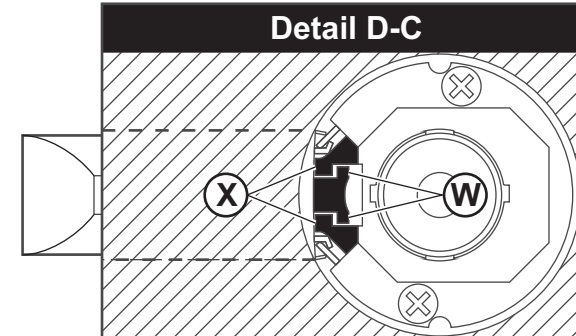


Detail D-B



Detail D-A

Detail D-C



...CONTINUED FROM PAGE 2

- Remove **la** from **Ha**.
  - Install 4, AA batteries into **la** (observe polarity).
  - Reinstall **la** into **Ha**.
  - Connect **Ja** to **U**.
  - Swing **Ha** back to **Ca**, secure with **Ga**.
- 18 - Perform this step ONLY if your lock came with Office Function:  
 ▪ Refer to **Detail D-E** and connect **Ka** to **La**.
- 19 - Place **Ma** over **Ca**.  
 20 - Secure **Ma** with **Oa**.
- Installation of hardware complete.**

**FUNCTIONAL TEST:**

- 1 - Enter the pre-programmed Normal Access Code (1 3 5 7 9).
- 2 - Rotate outside lever downward.
  - ♦ Inside lever should also rotate downward.
- 3 - Test cylinder with mechanical keys.

Refer to Programming Guide for complete use of lock.