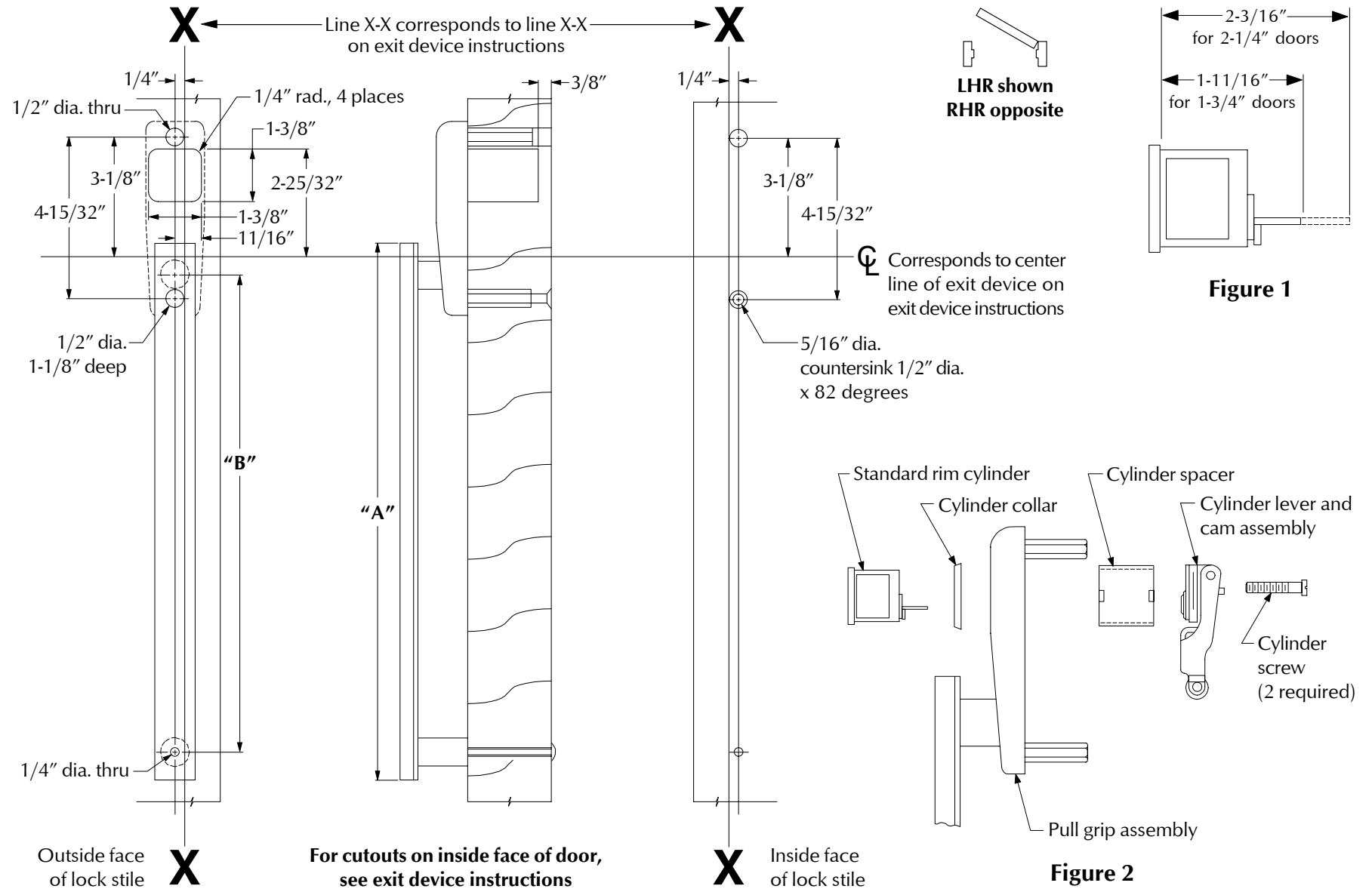


VON DUPRIN®

INSTALLATION INSTRUCTIONS

1. Prepare door for exit device. See exit device instructions for holes, backset (line X-X), and center lines.
2. Prepare door for trim:
 - A. Transfer line X-X from inside (exit device side) of door to outside (trim side) of door. Use extra care if edge of door is beveled. Be sure line X-X is parallel to edge of door.
 - B. Locate and prepare all holes as shown.
3. Cut cylinder tailpiece to length (Figure 1).
4. Install cylinder and assemble component parts (Figure 2).
5. Apply trim.
6. Apply exit device.
7. Test key, control, and device action.

Trim	Dimension "A"	Dimension "B"
3308	10"	8"
3311	13"	11"
3314	16"	14"
3318	20"	18"



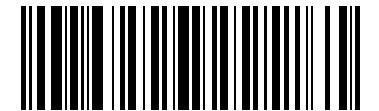
IR Security & Safety
Proven Source. Proven Solutions.™

3308, 3311, 3314, AND 3318NL TRIM
FOR 33/35 RIM DEVICE ON WOOD DOOR

Copyright © 2004 Ingersoll-Rand.
All rights reserved.

PAGE NO.
1 of 1

REVISION
3



921316-00