



931209-00

Signal Strike

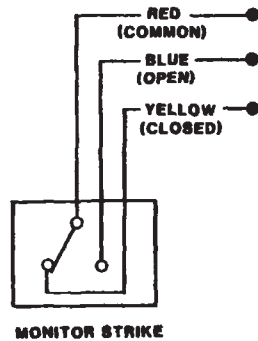
4263

VON DUPRIN®

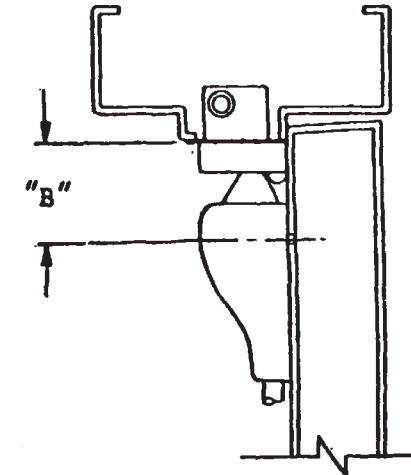
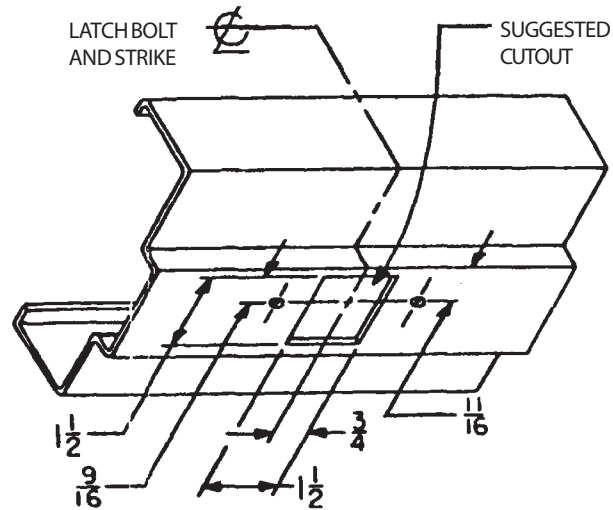
Installation Instructions

1. FOR DEVICE PREPARATION SEE DIRECTIONS THAT ACCOMPANY THEM.
2. PREPARE FRAME FOR MONITOR STRIKE AS SHOWN.
3. WIRING AND INSTALLATION OF STRIKE
  - A. CONNECT WIRES FROM STRIKE TO LEAD. (SEE WIRING DIAGRAM)
  - B. SECURE STRIKE TO FRAME USING THE (2) #12-24 SCREWS IN THE MOUNTING HARDWARE PACKAGE.
4. CHECK OPERATION OF MONITOR STRIKE.

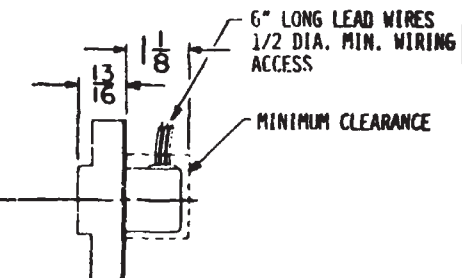
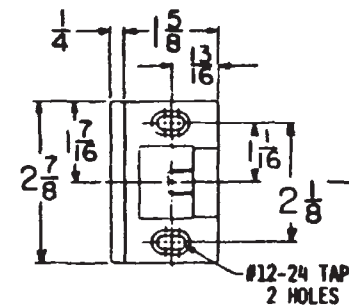
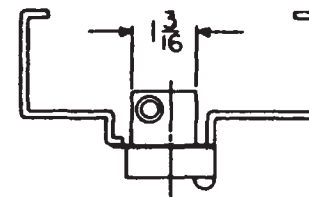
**WIRING DIAGRAM**



NOTE: SWITCH POSITION SHOWN WITH TRIPPER DEPRESSED, IE: LATCH BOLT IN STRIKE.



SINGLE DOOR INSTALLATION				TWO VERT. ROD DEVICES	
DEVICE	DIM. "B"	MIN. STILE	MIN. BACKSET	MIN. STILE	MIN. BACKSET
33/3527	1 5/8	2 13/16	2 1/16	2 3/16	1 7/16
33/3527A	2-1/8"	2-15/16"	2-1/16"	2-5/16"	1-7/16"
8827	1 5/8	3 1/16	2 1/16	2 7/16	1 7/16
98/9927	2 1/8	3 5/8	2 3/16	3 5/8	2 3/16
2227	2 1/8	3 5/8	2 3/16	3 5/8	2 3/16



FOR CUTOUTS ON INSIDE FACE OF DOOR SEE DIRECTIONS IN DEVICE CARTON.

**Customer Service**  
1-877-671-7011    www.allegion.com/us



© Allegion 2014  
Printed in U.S.A.  
931209-00 Rev. 01/14-b