



921061-00

Trim

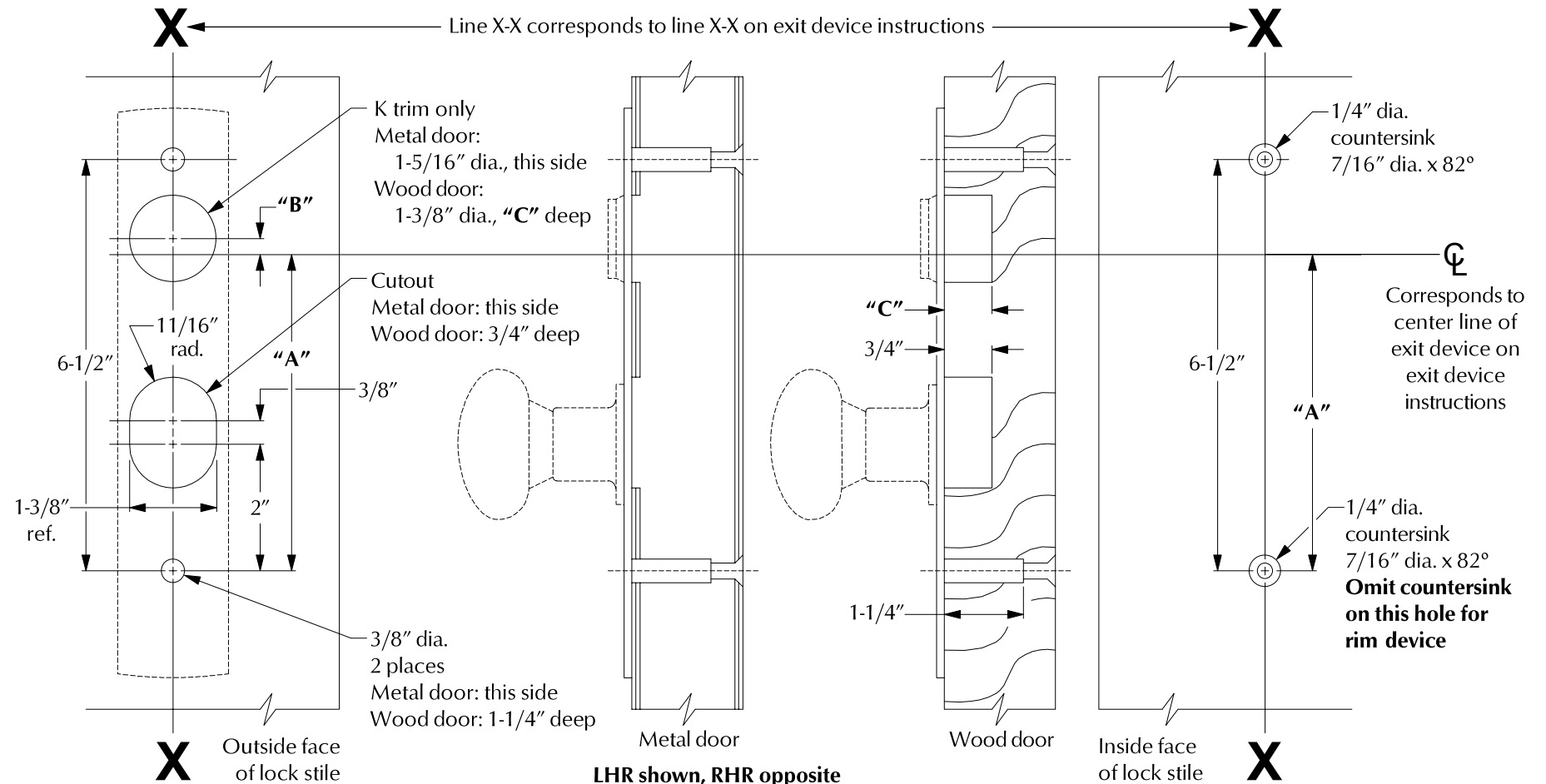
# 606K/K-BE

VON DUPRIN®

Installation Instructions

1. Prepare door for exit device. See exit device instructions for holes, line X-X, and center lines.
2. Prepare door for trim:
  - A. Transfer line X-X from inside (exit device side) of door to outside (trim side) of door. Use extra care if edge of door is beveled. Be sure line X-X is parallel to edge of door.
  - B. Locate and prepare holes as shown.
3. For K trim with rim or vertical rod device, install rim cylinder.
4. Apply trim.
5. Cut cylinder tailpiece and knob spindle per chart below.
6. Apply exit device.

Device	Cut Cylinder Tailpiece	Cut Knob Spindle
88 Rim	to extend 5/8" to 3/4" out of exit device side of door	to extend 5/8" to 3/4" out of exit device side of door
44 Rim	to extend 5/8" to 3/4" out of exit device side of door	to extend 5/8" to 3/4" out of exit device side of door
8875 Mortise Lock	not required	1/8" to 3/8" less than door thickness
8827 Vertical Rod	to extend 5/8" to 3/4" out of exit device side of door	1/8" to 3/8" less than door thickness



For cutouts on inside face of door, see exit device instructions

Device	Dimension "A"	Dimension "B"	Dimension "C"
44 Rim	5"	1/4"	thru
88 Rim	5"	1/4"	thru
8875 Mortise Lock	3-1/4"	2"	3/4"
8827 Vertical Rod	3-1/2"	1-3/4"	thru

**Customer Service**  
 1-877-671-7011 [www.allegion.com/us](http://www.allegion.com/us)



© Allegion 2014  
 Printed in U.S.A.  
 921061-00 Rev. 01/14-b