

INSTALLATION DIRECTIONS

BEFORE APPLYING THIS DEVICE

- Threshold (if any) must be installed.
- Doors must be fitted and hung.
- Check that handing of hardware corresponds with handing of door.

1. APPLY STRIKE

- Tape appropriate strike template No. 3 or No. 4 depending on handing of door to stop.
- When Von Duprin Mullion is used apply strike at tapped holes in Mullion. (See illustration 1.)

2. PREPARE DOOR

- Tape full size template No. 1 or 2, depending on handing of door, to inside face of lock stile. Be sure center line of device is 39-13/16" from finished floor.

NOTE: BE SURE CENTERLINE OF LOCK STILE CASE IS PARALLEL TO STOP AND THAT EDGE OF CASE IS 3/16" FROM EDGE OF STRIKE. STRIKE MUST BE SHIMMED OUT IF LOCK CASE IS MOUNTED MORE THAN 3/16" FROM STRIKE.

- Prepare door as shown. See Fig. 1 for wood door application, and Fig. 2 for metal door application.

3. APPLY OUTSIDE TRIM

- See directions in trim carton. Line "X-X" on trim template corresponds to line "X-X" on device template and is parallel to edge of door. Transfer line "X-X" from inside face to outside face of door.
- Prepare outside face of lock stile.
- Cut off thumbpiece and cylinder tailpiece, if necessary, to extend 5/8" to 3/4" thru door and into device case.
- Apply outside trim.

4. INSTALL LEVER ARMS

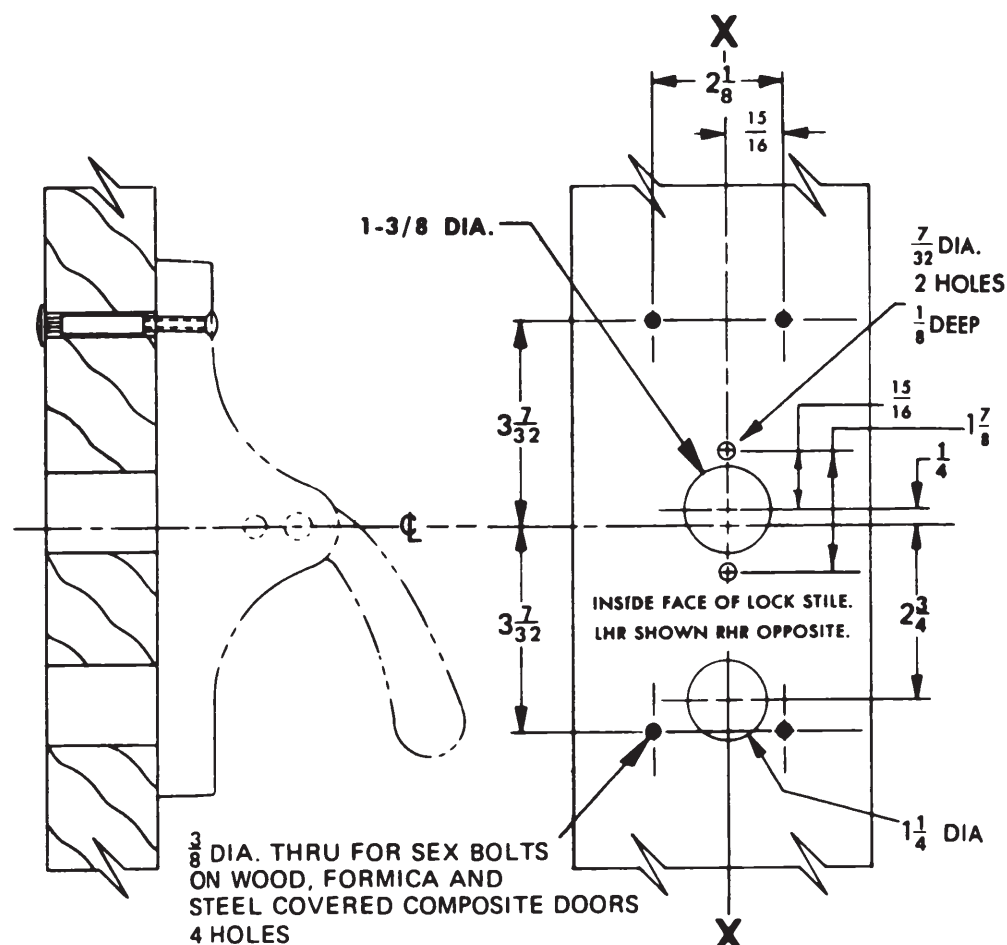
- Insert lever arms into lock stile and hinge stile cases. (See Direction No. 941009 for cutting crossbar, if necessary.)
- Assemble axles and tighten securely. (See instructions in axle envelope.)

5. APPLY LOCK STILE CASE

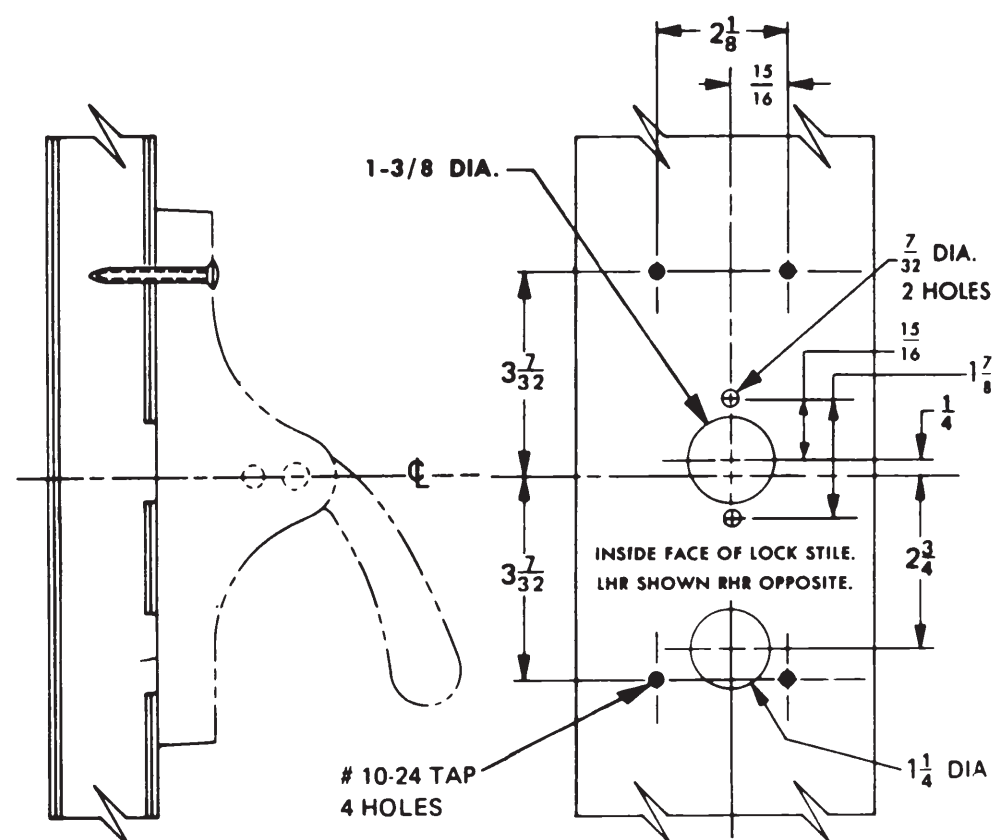
- Remove key from cylinder.
- Position cylinder cam as shown in Fig. 3.
- Attach lock stile case to door. (See Fig. 1 or Fig. 2)
- Test key and thumbpiece action.

6. APPLY HINGE STILE CASE AND CROSSBAR TUBE (FIG. 4)

- Slip crossbar tube on lock stile and hinge stile lever arms. (See Direction No. 941009 for cutting crossbar, if necessary.)
- Be sure crossbar is level and hinge stile case is parallel to edge of door and approximately on centerline of exposed stile.
- Using holes in hinge stile case, mark location and prepare door for attaching screws.
- Apply hinge stile case with crossbar in place.
- Tighten wedge-tite set screws with dog key and screwdriver or equivalent for leverage, and test crossbar for free action. (See Direction No. 941009 for these instructions.)



WOOD DOOR APPLICATION
FIG. 1



METAL DOOR APPLICATION
FIG. 2

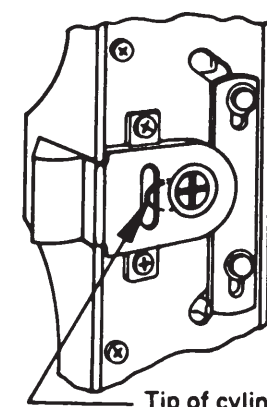


FIG. 3
Tip of cylinder cam to be in this position. Be sure key is removed from cylinder.

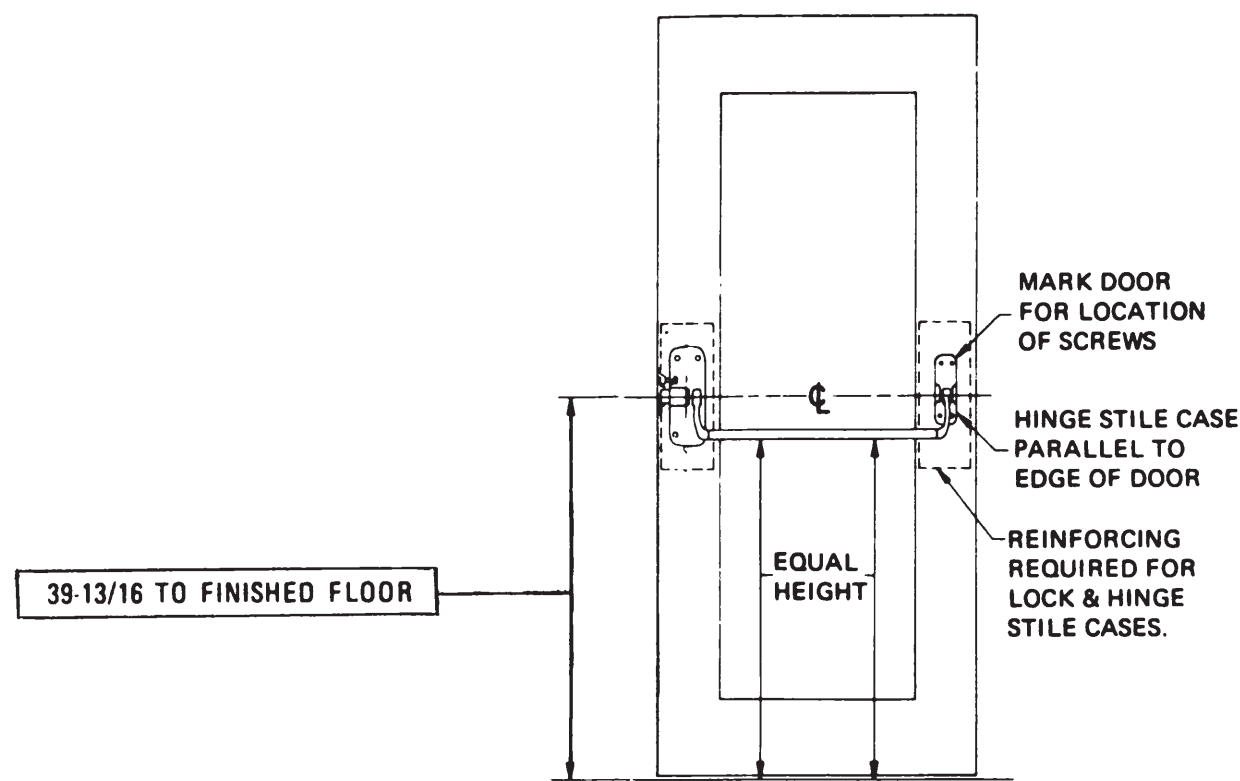
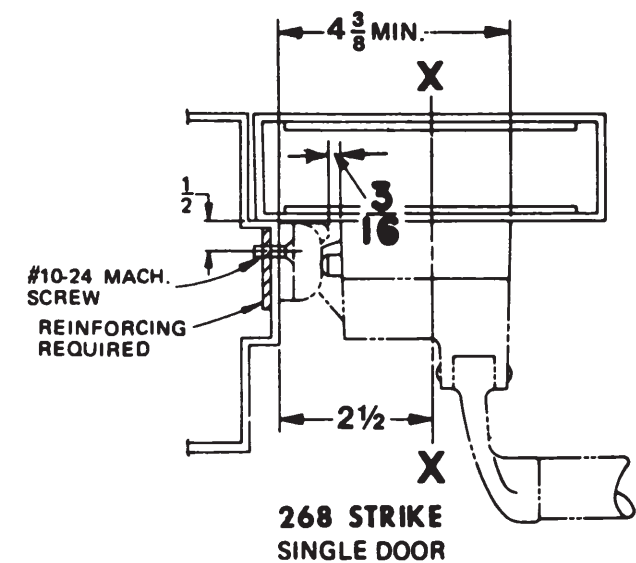
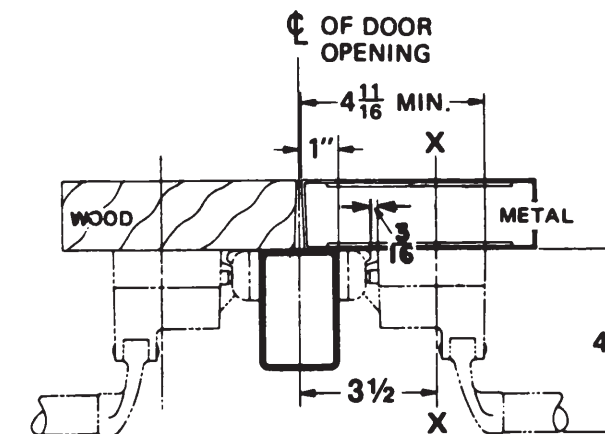


FIG. 4



268 STRIKE
SINGLE DOOR



ILLUST. 1
9954 MULLION WITH 268 STRIKE



Customer Service

1-877-671-7011 www.allegion.com/us

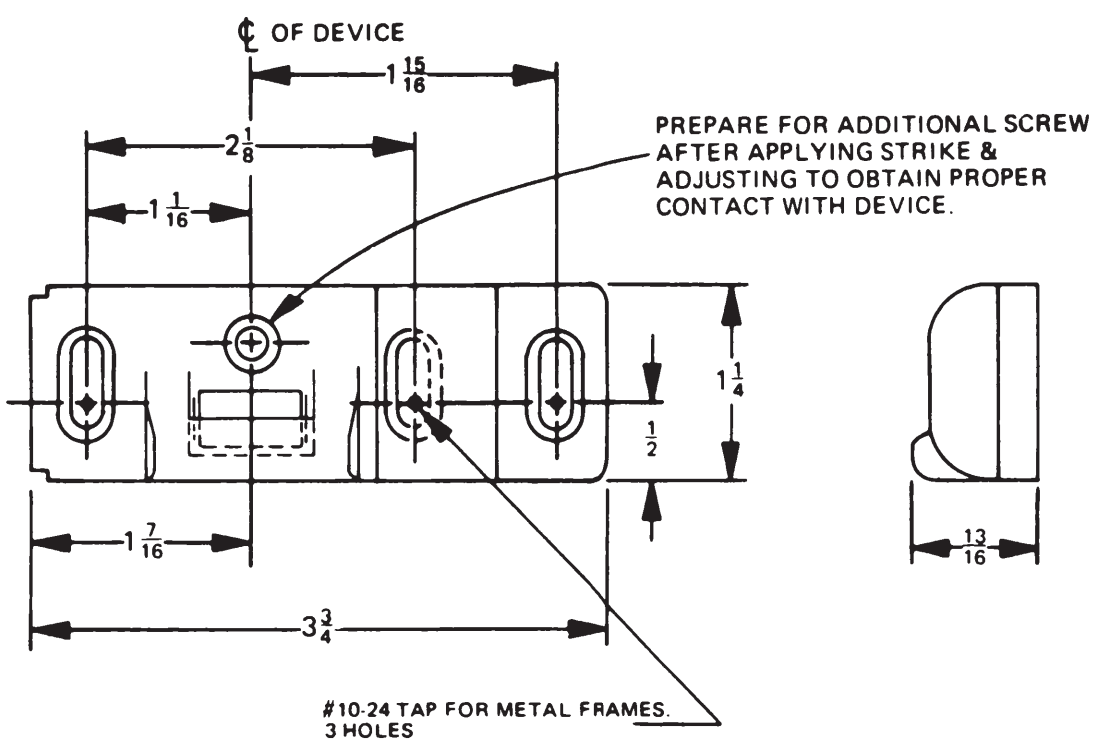


911171-00

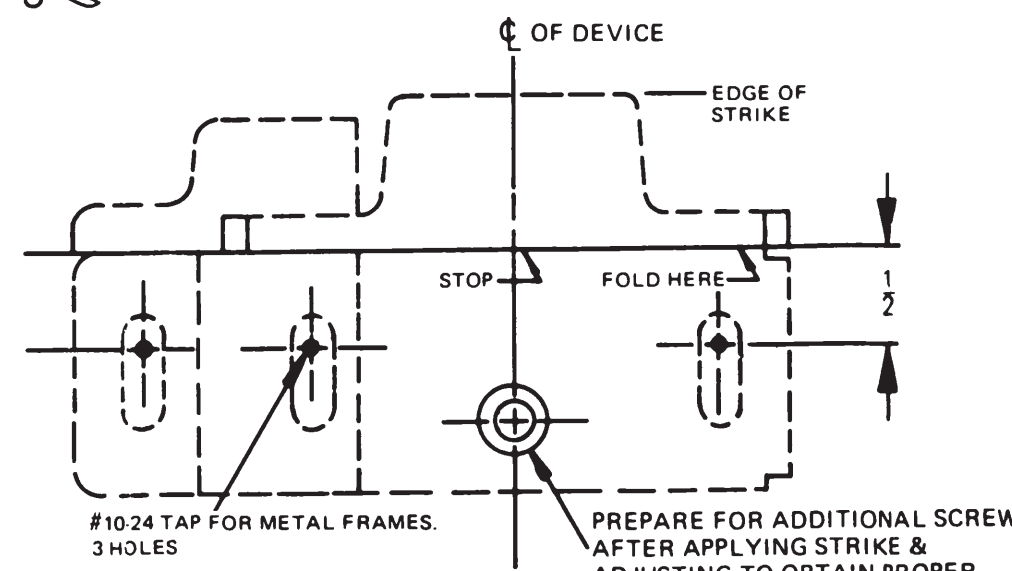
DESCRIPTION
88TP-F SERIES RIM DEVICES

VON DUPRIN

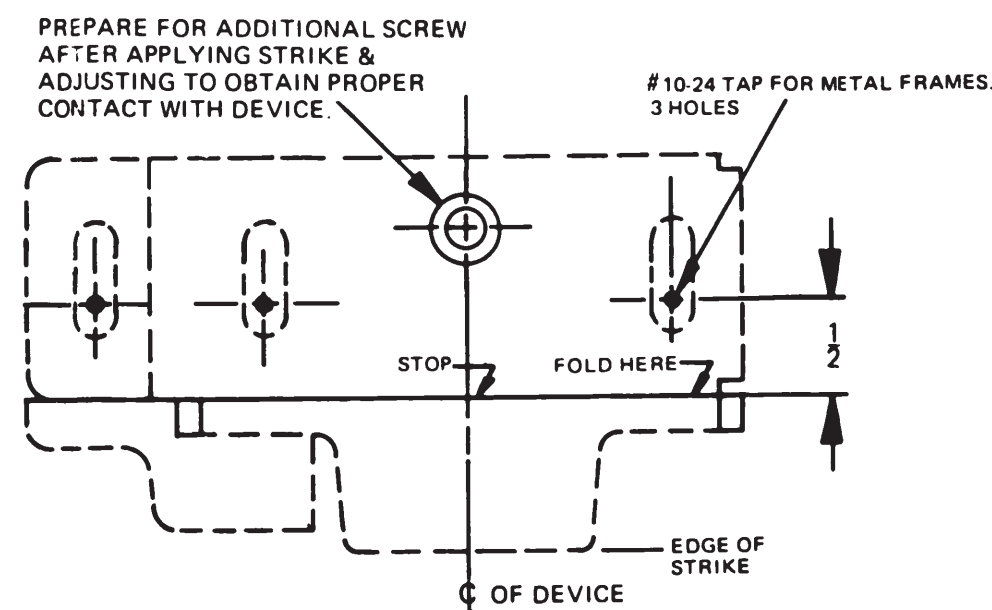
DIRECTION NUMBER 911171-00 (b) DATE 06/14



268 STRIKE



268 STRIKE
TEMPLATE NO. 3



268 STRIKE
TEMPLATE NO. 4

LOCK CASE TEMPLATE FOR LHR DOOR

LOCK CASE TEMPLATE FOR RHR DOOR

TEMPLATE NO. 1

TEMPLATE NO. 2

LHR SHOWN
RHR OPPOSITE