

VON DUPRIN®

M110 cylinder

Installation Instructions

1. Prepare inside face of door for exit device. See exit device instructions for holes and backset (line X-X).
2. Prepare outside face of door for cylinder.
 - A. Transfer line X-X from exit device side of door to trim side of door. Use extra care if edge of door is beveled. Be sure line X-X is parallel to edge of door.
 - B. Locate and prepare all holes as indicated.
3. Assemble component parts (Figure 1).
4. Apply cylinder.
 - A. Cut cylinder tailpiece to proper length (Figure 2) and install cylinder.
 - B. Apply cylinder mounting screw and tighten securely.
5. Apply device.
 - A. Remove key from cylinder.
 - B. Attach lock stile case to door.
 - C. Test key action.

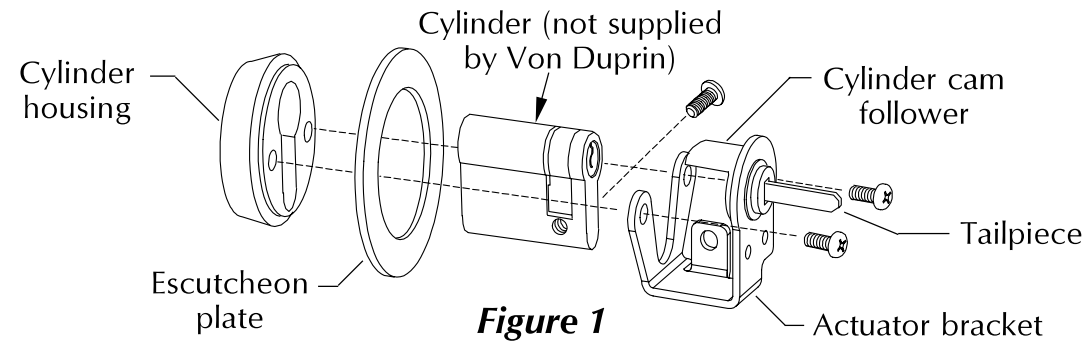


Figure 1

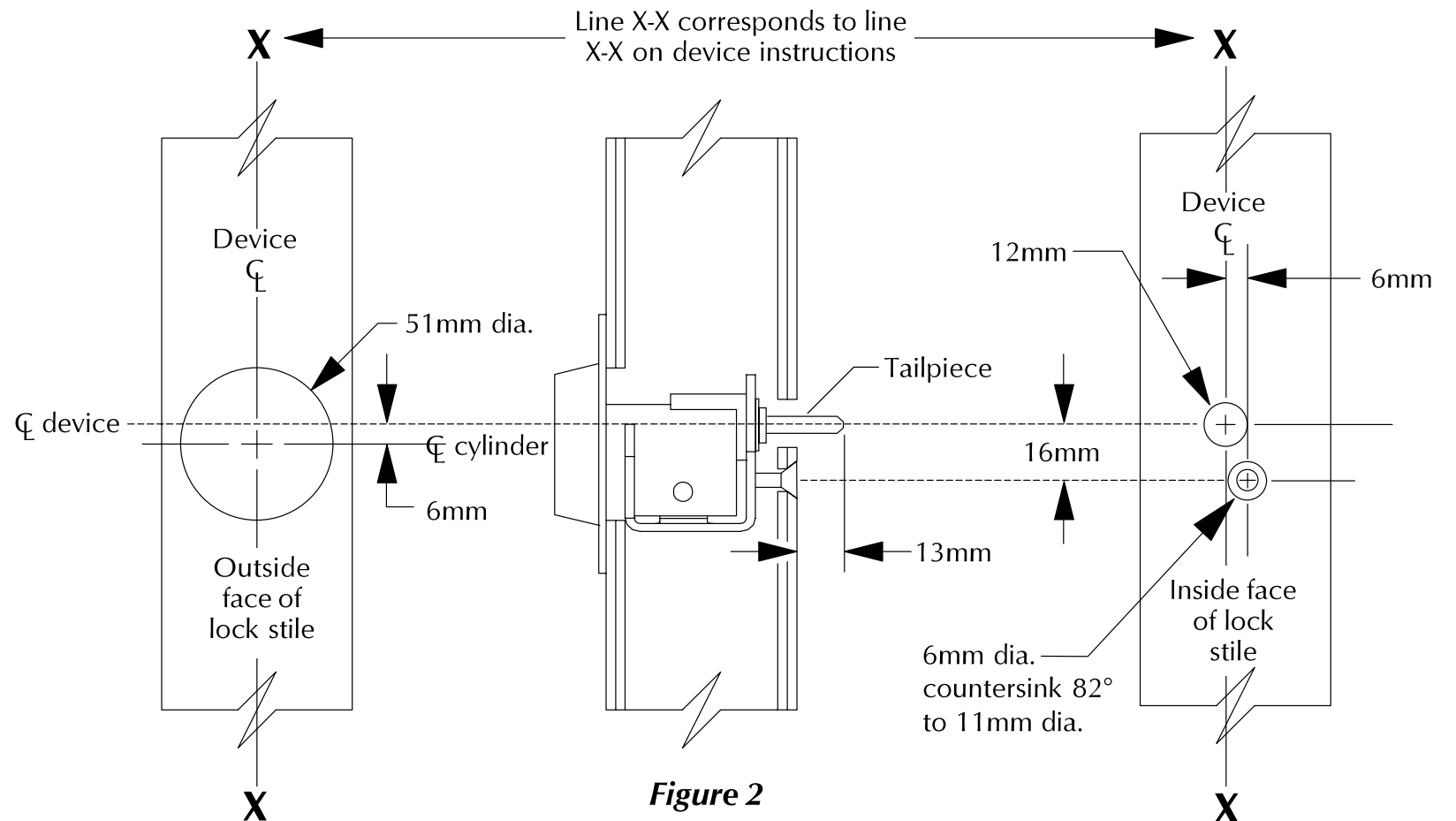


Figure 2



© Allegion 2015
Printed in U.S.A.
M941022-00 Rev. 06/15-b

Customer Service
1-877-671-7011 www.allegion.com/us