



47280191

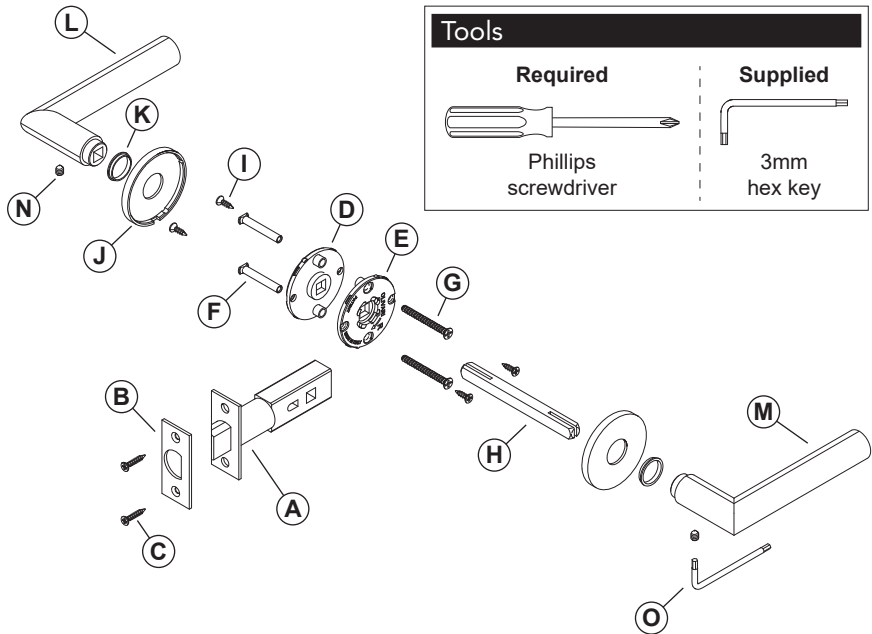
PT-Series Tubular Passage Trim



Model PT10, Rose

Installation Instructions

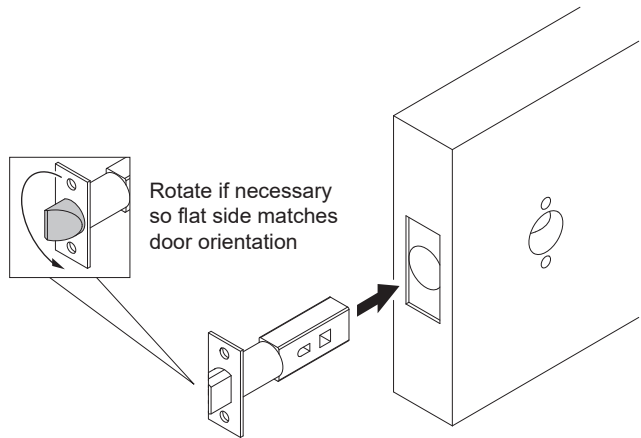
Parts



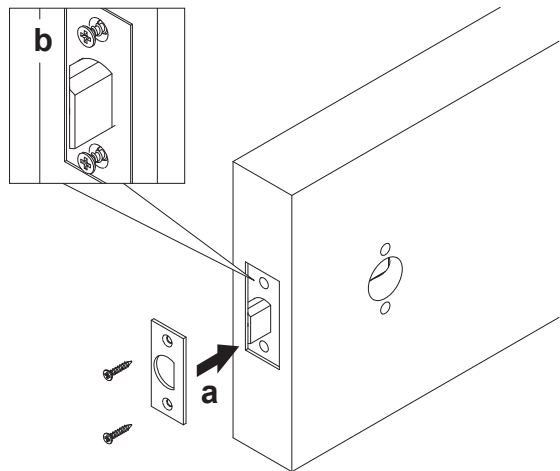
Parts

- | | |
|--------------------------|----------------------------|
| A Passage latch | I Surface mount screws (4) |
| B Latch face plate | J Roses (2) |
| C Latch screws (2) | K Nylon bushings (2) |
| D Left hand spring cage | L Left hand lever |
| E Right hand spring cage | M Right hand lever |
| F Mounting posts (2) | N Set screws (2) |
| G Mounting screws (2) | O 3mm hex key |
| H Solid spindle | |

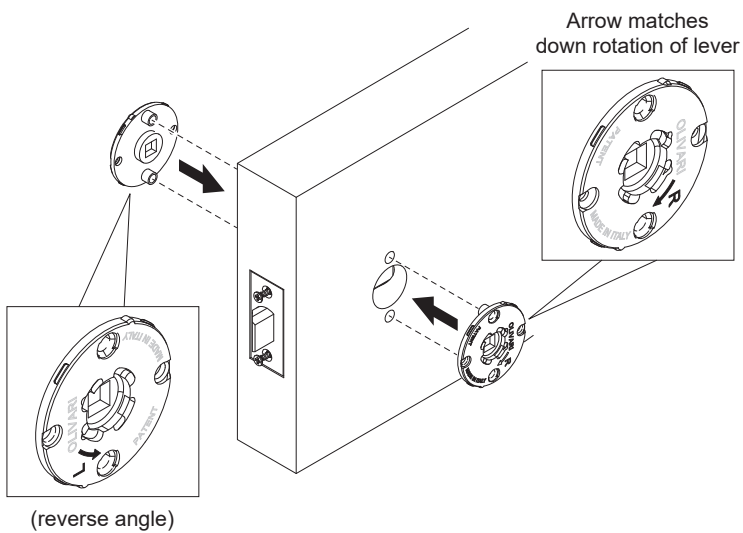
1 Insert latch into door edge.



2 Install face plate and lightly tighten.

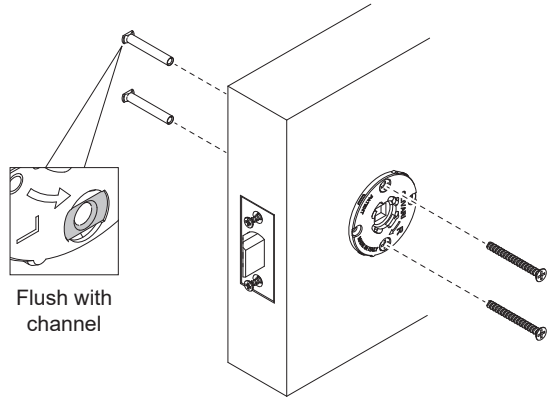


3 Install spring cages.



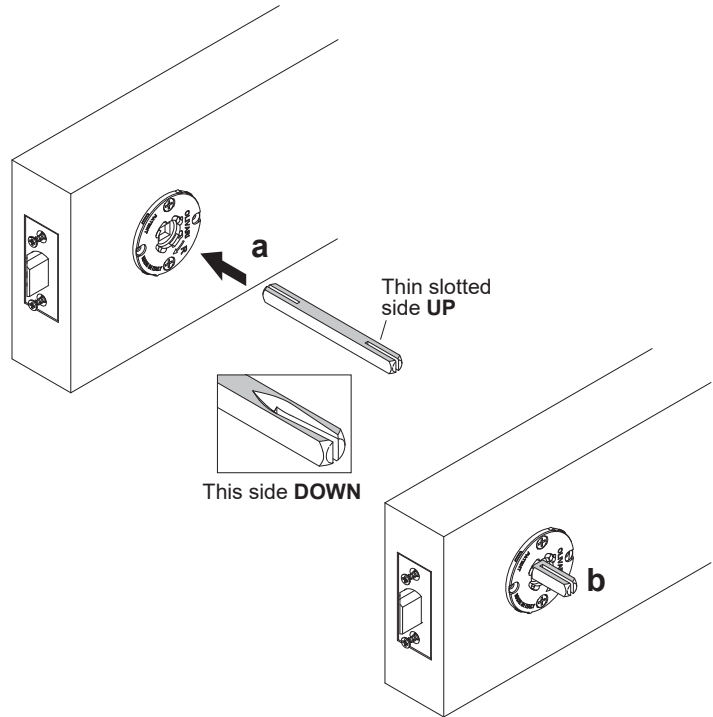
4 Install mounting posts and screws.

① Install mounting posts on exterior side of door; install mounting screws on interior side of door.



5 Insert spindle.

① Install so spindle length is same on both sides of door.



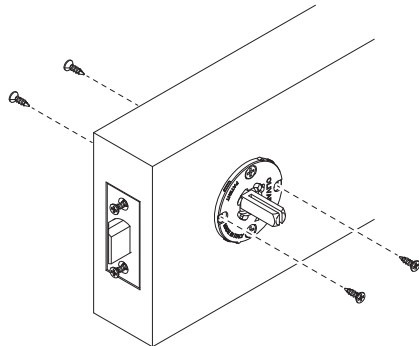
6 Check operation.

Confirm smooth operation with no sticking.

If not operating smoothly, perform these steps:

- Slightly loosen spring cage mounting screws.
- Confirm function by cycling lever.
- Temporarily slide lever onto spindle. Confirm lever is horizontal with no lever droop.
- Retighten spring cage mounting screws.

7 Install surface mount screws.





47280193

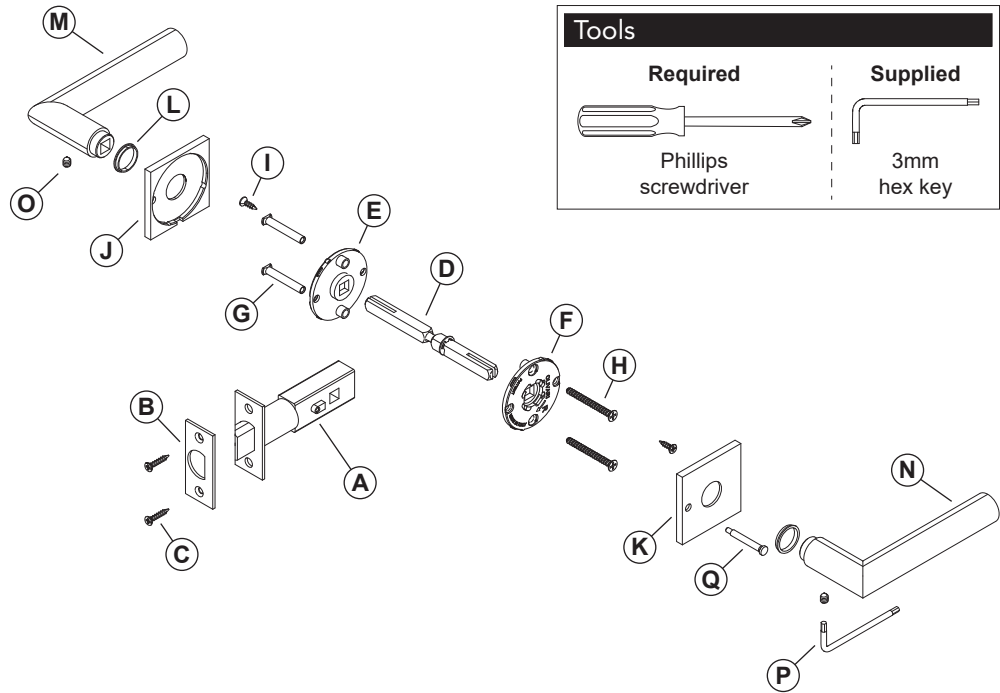
PT-Series Tubular Privacy Trim



Model PT40, Rose

Installation Instructions

Parts

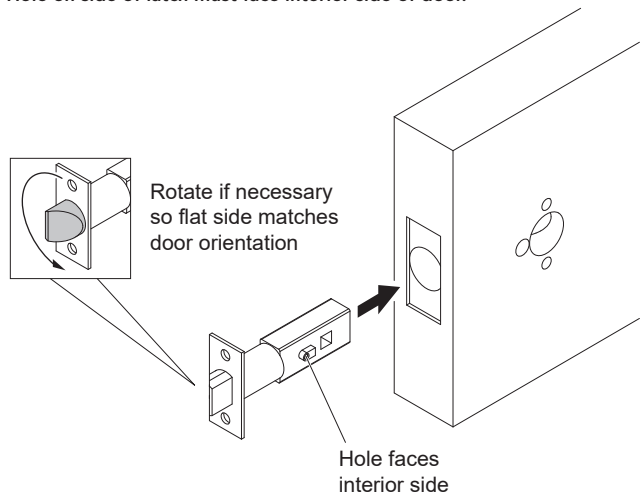


Parts

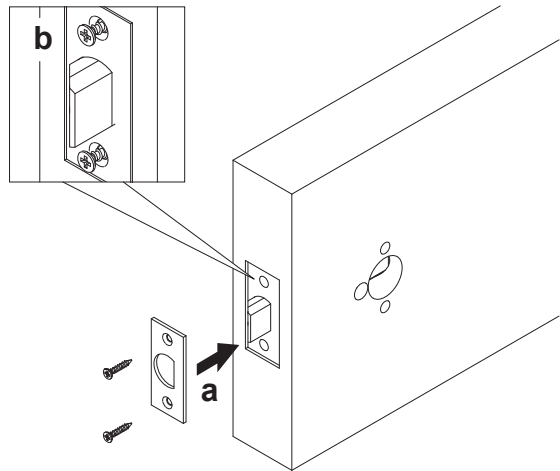
- | | | |
|--------------------------|----------------------------|--------------------|
| A Privacy latch | G Mounting posts (2) | M Left hand lever |
| B Latch face plate | H Mounting screws (2) | N Right hand lever |
| C Latch screws (2) | I Surface mount screws (2) | O Set screws (2) |
| D Split spindle | J Left hand rose | P 3mm hex key |
| E Left hand spring cage | K Right hand rose | Q Privacy pin |
| F Right hand spring cage | L Nylon bushings (2) | |

1 Insert latch into door edge.

① Hole on side of latch must face interior side of door.

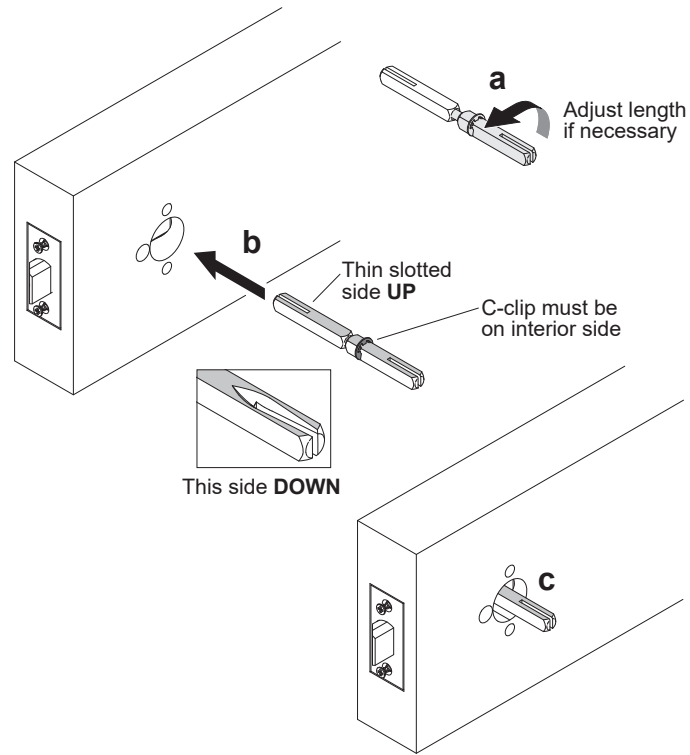


2 Install face plate and lightly tighten.

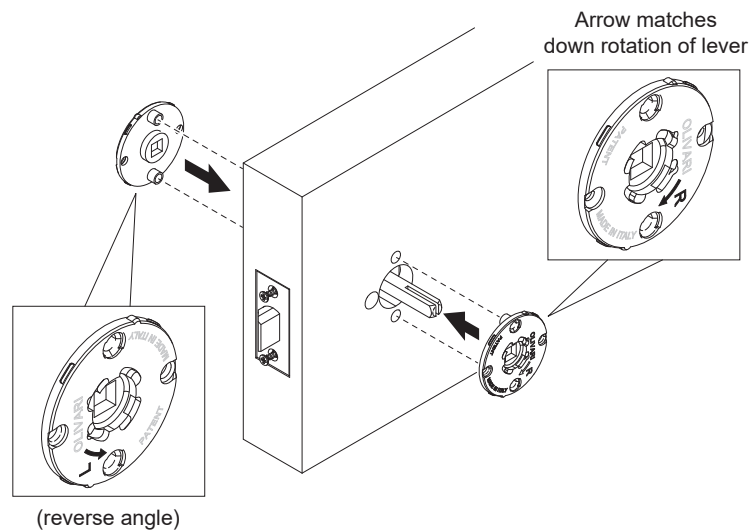


3 Insert spindle.

① Adjust if necessary so spindle length is same on both sides of door.

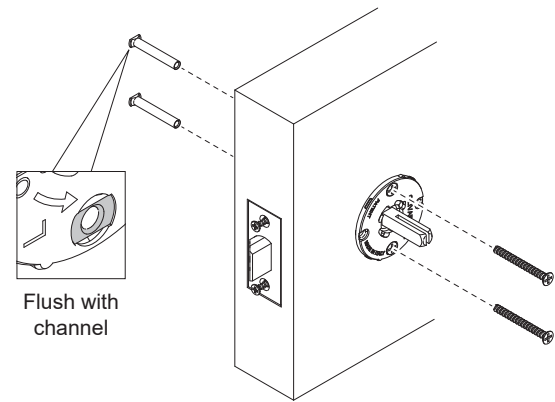


4 Install spring cages.



5 Install mounting posts and screws.

① Install mounting posts on exterior side of door; install mounting screws on interior side of door.



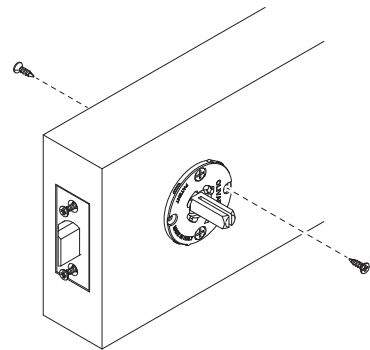
6 Check operation.

Confirm smooth operation with no sticking.

If not operating smoothly, perform these steps:

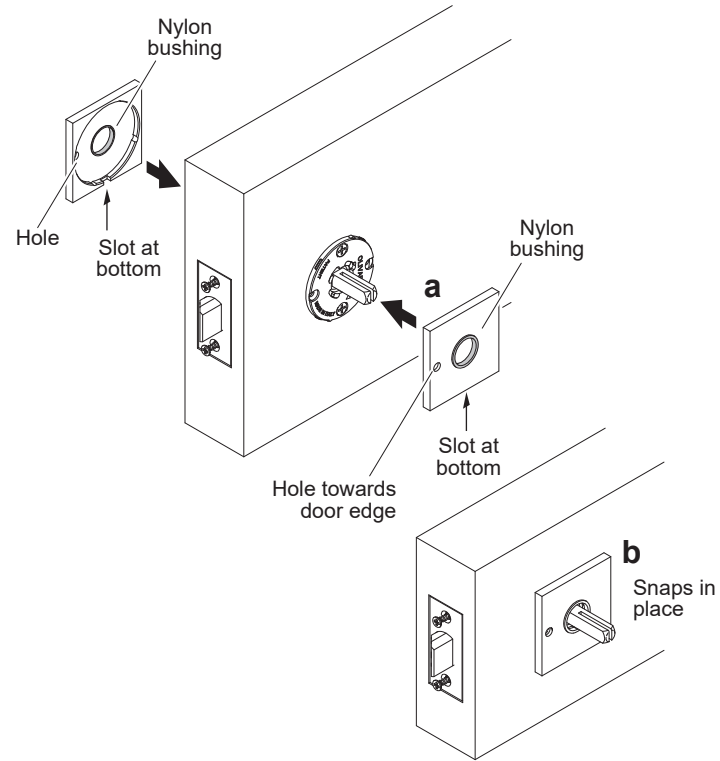
- Slightly loosen spring cage mounting screws.
- Confirm function by cycling lever.
- Temporarily slide lever onto spindle. Confirm lever is horizontal with no lever droop.
- Retighten spring cage mounting screws.

7 Install surface mount screws.

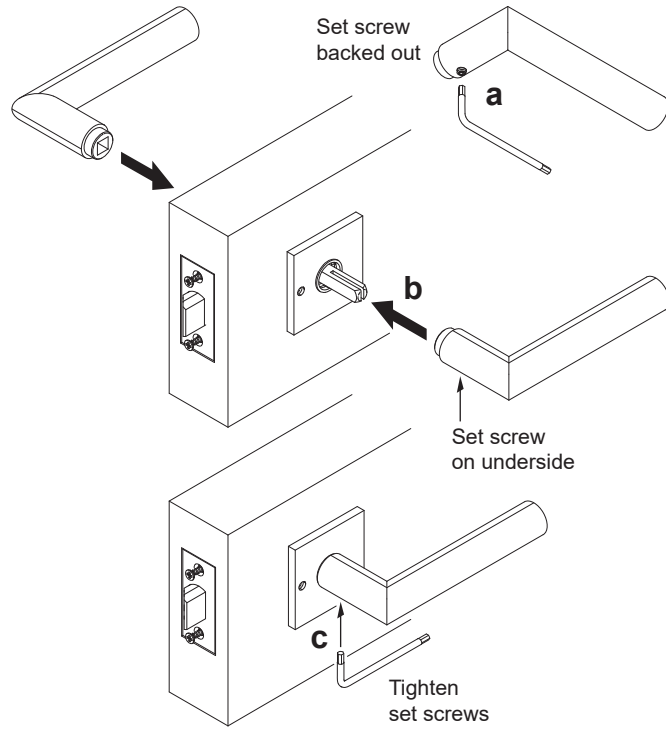


8 Install roses.

① Roses are handed. Hole must be on latch side to align with pin, and slot must be at the bottom.

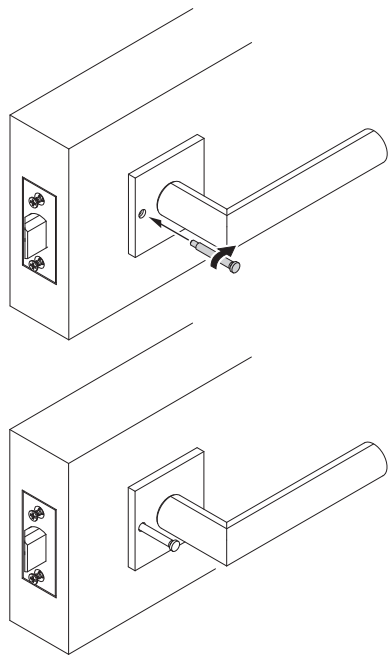


9 Install levers.

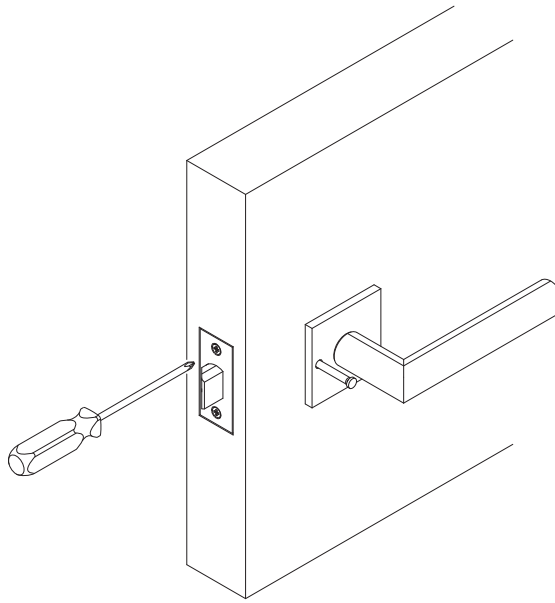


10 Install privacy pin.

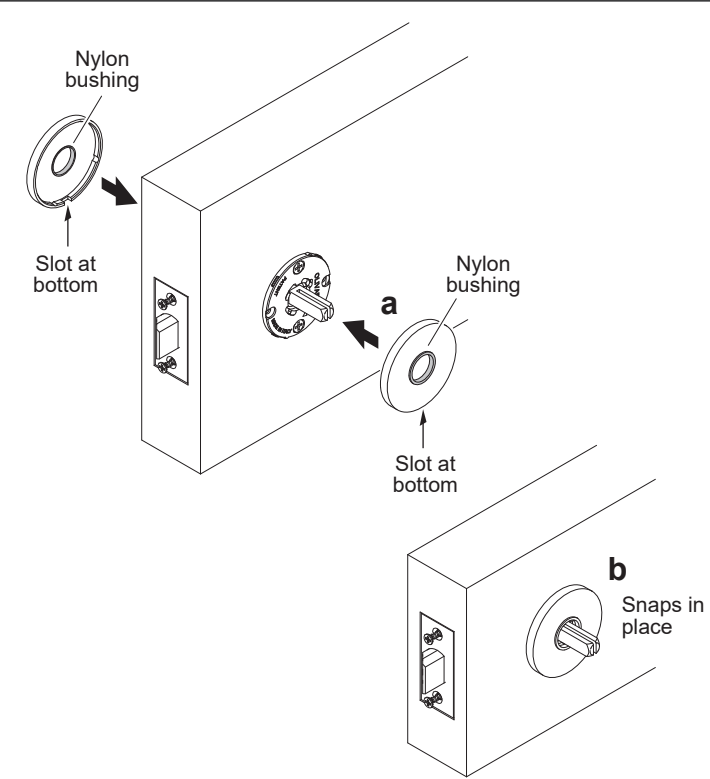
① Privacy pin should easily push in and out to lock/unlock.



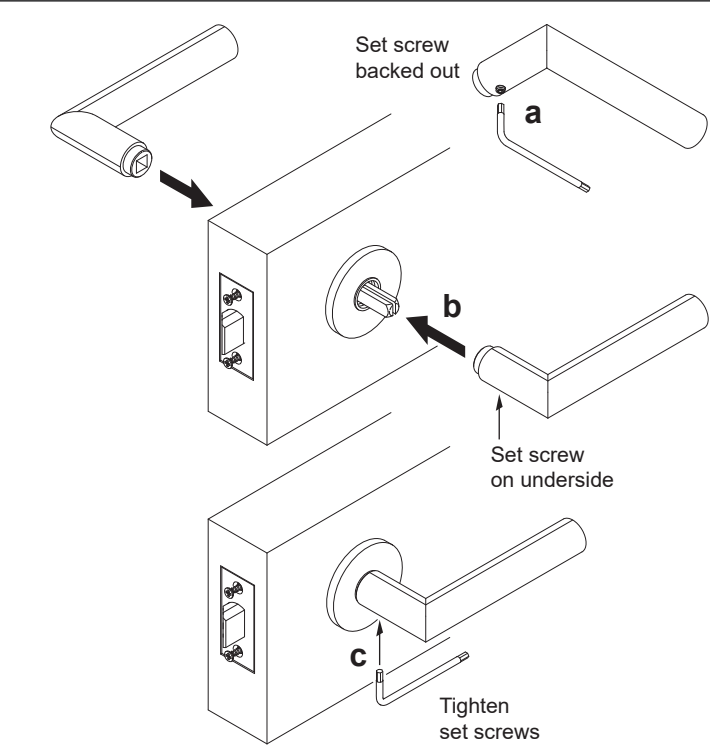
11 Fully tighten face plate.



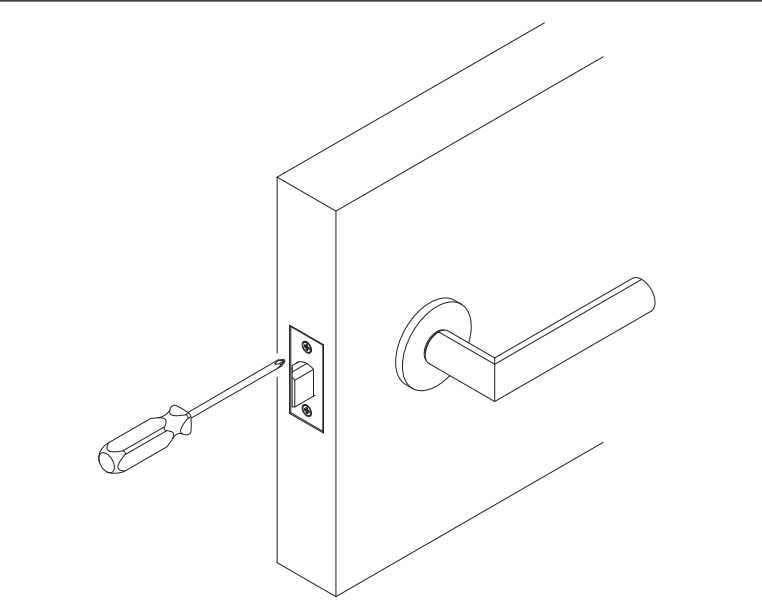
8 Install roses.



9 Install levers.



10 Fully tighten face plate.





47280192

PT-Series Dummy Trim

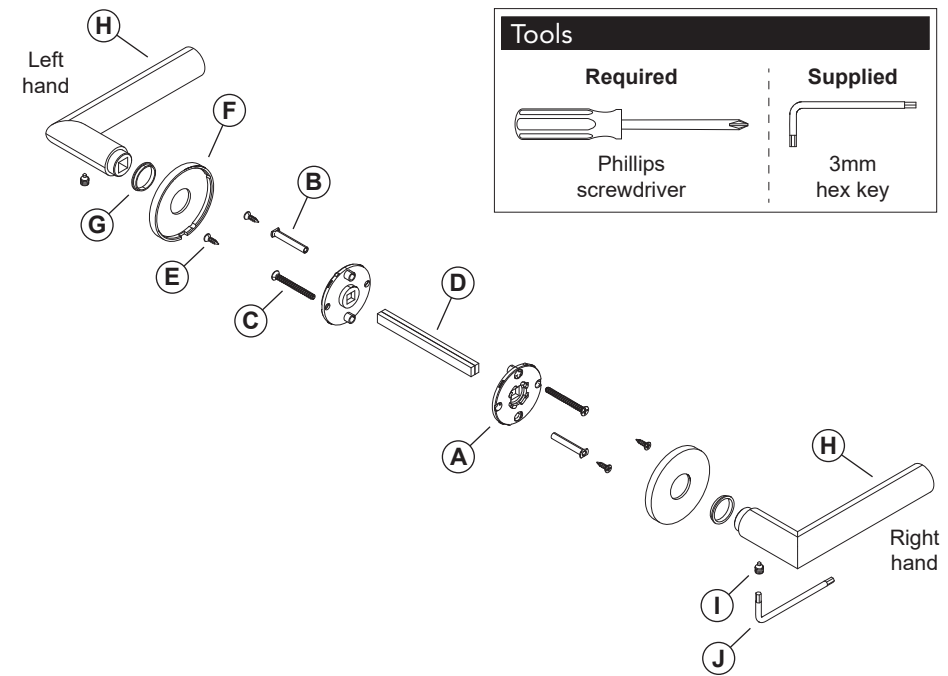


Model PT170 (single dummy), trim for one side of door, Rose
Model PT172 (double dummy) trim for both sides of door, Rose

Installation Instructions

Single Dummy parts		Single Dummy installation	
<div><div><div>Tools</div><div><div>Required</div><div></div><div>Phillips screwdriver</div></div><div><div>Supplied</div><div></div><div>3mm hex key</div></div></div></div>		<div><div>1</div><div>Install spring cage.</div><div></div></div>	<div><div>3</div><div>Install rose.</div><div></div></div>
<div><div><div>Parts</div><div><div>A</div><div>Spring cage</div></div><div><div>B</div><div>Surface mount screws (4)</div></div><div><div>C</div><div>Rose</div></div><div><div>D</div><div>Nylon bushing</div></div><div><div>E</div><div>Lever</div></div><div><div>F</div><div>Set screw</div></div><div><div>G</div><div>3mm hex key</div></div></div></div>		<div><div>2</div><div>Install surface mount screws.</div><div></div></div>	<div><div>4</div><div>Install lever.</div><div></div></div>

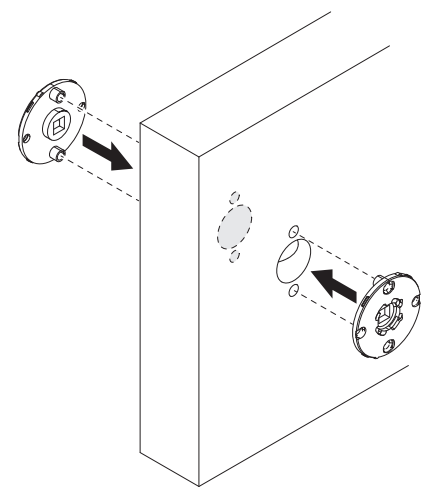
Double Dummy parts



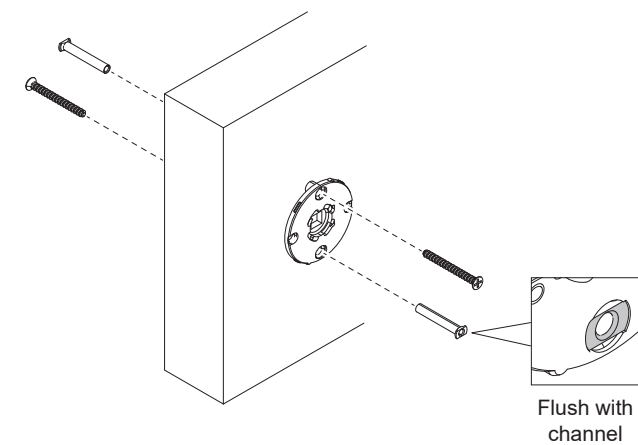
- Parts**
- | | |
|----------------------------|----------------------|
| A Spring cages (2) | F Roses (2) |
| B Mounting posts (2) | G Nylon bushings (2) |
| C Mounting screws (2) | H Levers (2) |
| D Split spindle | I Set screws (2) |
| E Surface mount screws (4) | J 3mm hex key |

Double Dummy installation

1 Install spring cages



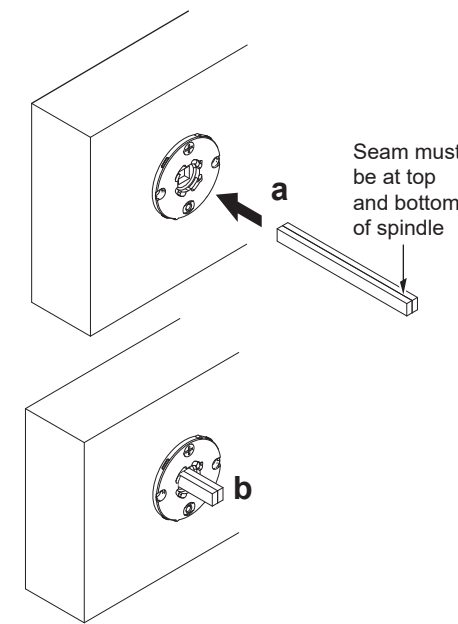
2 Install mounting posts and screws.



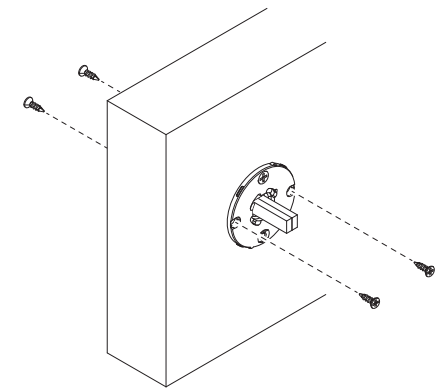
Double Dummy installation (continued)

3 Install split spindle

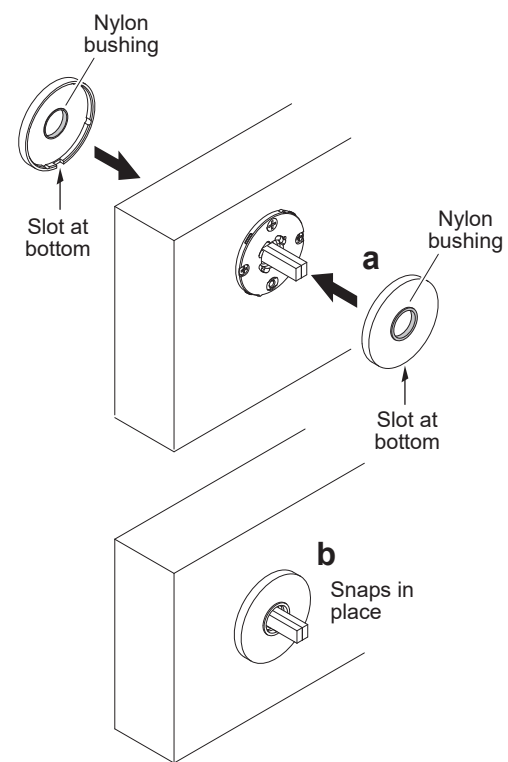
① Adjust if necessary so spindle length is same on both sides of door.



4 Install surface mount screws



5 Install roses.



6 Install levers.

