



Technical Services

TECHNICAL BULLETIN: SES-092807-A

Firmware Upgrade Procedure KC-2 and CM/CL Locks ONLY

OVERVIEW:

This Technical Bulletin documents the process required to upgrade (or flash) new firmware into any King Cobra – 2 (KC2), or Computer Managed (CM/CL) lock. This information should be used **ONLY** under the direction of Schlage Electronic Security Technical Services. Contact Technical Services at the number below.

NOTES

- 1 - Upgrading the firmware of a lock does not change any of the previously programmed Access Rights or Time Features.
- 2 - You may want to verify the version of your lock firmware before performing this upgrade procedure. See Step 5 to verify a lock's current firmware version.

ITEMS REQUIRED:

- Pocket PC with the latest version of CEUplink properly installed
See www.irsupport.net for the latest version of CEUplink
- Pocket PC autosync cable
- CIP – Computer Interface module
- Programming Credential or Programming Code needed to program locks
- A valid User Credential for testing the lock after the firmware update
- Firmware programming file – provided by Technical Services

NOTE: Firmware programming files are designated by the firmware part number and followed with a “.S19 “ file extension - For example: 950081-A.S19

IMPORTANT: This “.S19” file must be specified for the lock type you are about to reprogram. Programming a lock with the wrong “.S19” firmware file will cause the lock to be inoperative!

PROCEDURE STEPS:

Follow the steps below to reprogram the firmware of your lock.

- Step 1:** Copying the Programming file onto the Pocket PC
- Step 2:** Preparing your Pocket PC
- Step 3:** Upgrade (or flash) a lock with new firmware
- Step 4:** Repeat for additional locks
- Step 5:** Verifying the firmware revision

Contact Technical Support for any questions concerning this Technical Bulletin
866.322.1237 – 8 AM to 8 PM (EST) - M/F



www.schlage.com

Technical Services

TECHNICAL BULLETIN: SES-092807-A

Step 1: Copying the Programming file onto the Pocket PC

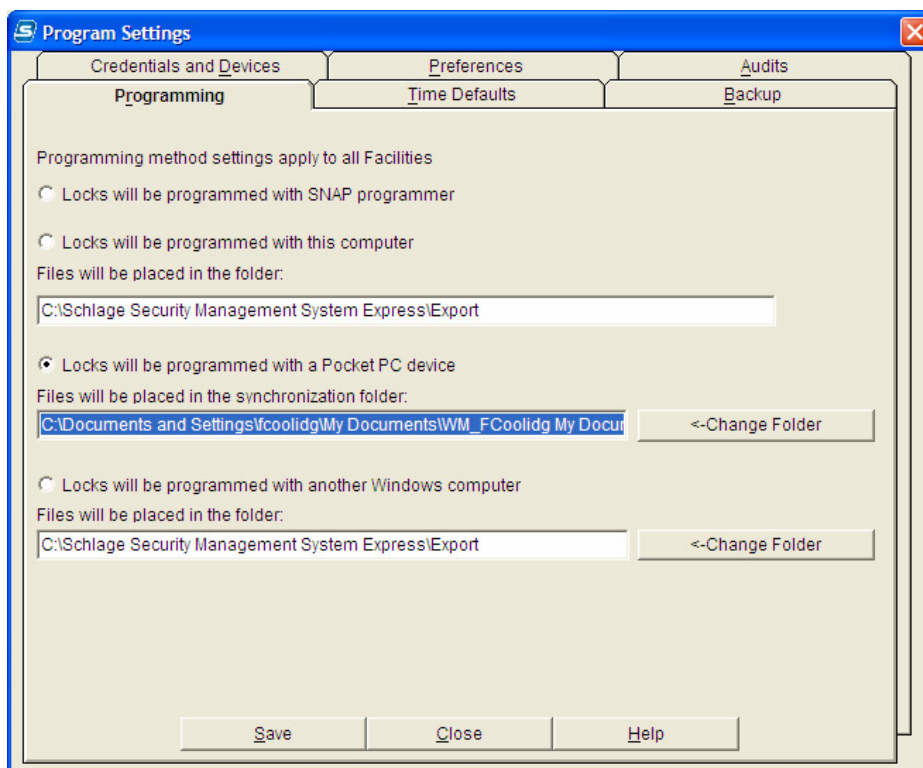
Copy the XXXXXX-X.S19 file into the “Synchronization” folder normally used for file transfers between your PC and your Pocket PC.

The Synchronization folder location can be found by opening SMS Express and viewing the Settings => Program Settings => Programming page.

In the screen shot example below the folder location is:

[C:\Documents and Settings\fcoolidg\My Documents\WM_FCoolidg My Documents](#)

NOTE: The folder location may be different for your facility



After moving the .S19 file to the synchronization folder connect your Pocket PC to allow the ActiveSync application to move the file onto the Pocket PC automatically.

Contact Technical Support for any questions concerning this Technical Bulletin

866.322.1237 – 8 AM to 8 PM (EST) - M/F

www.irsupport.net

Page 2 of 8



Technical Services

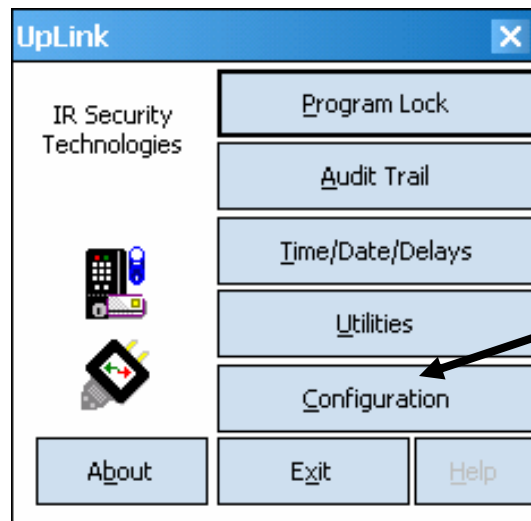
TECHNICAL BULLETIN: SES-092807-A

Step 2: Preparing your Pocket PC

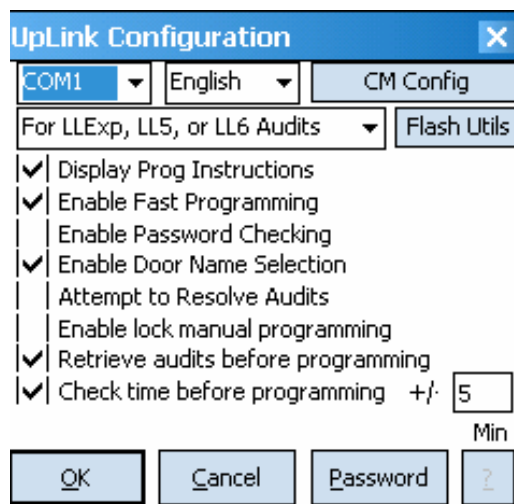
- On your PDA, click on “Start” and select “Programs” from the dropdown list
- Click on the CEUplink icon to run the CEUplink application
- SELECT the “Configuration” button.

NOTE

The CEUplink PASSWORD might be required at this step
(Default password is 123456)



- Then SELECT the “Flash Utils” button.



Contact Technical Support for any questions concerning this Technical Bulletin

866.322.1237 – 8 AM to 8 PM (EST) - M/F

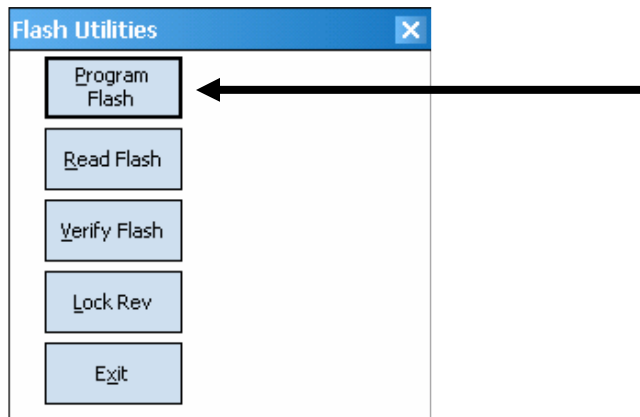
www.irsupport.net

Page 3 of 8

Technical Services

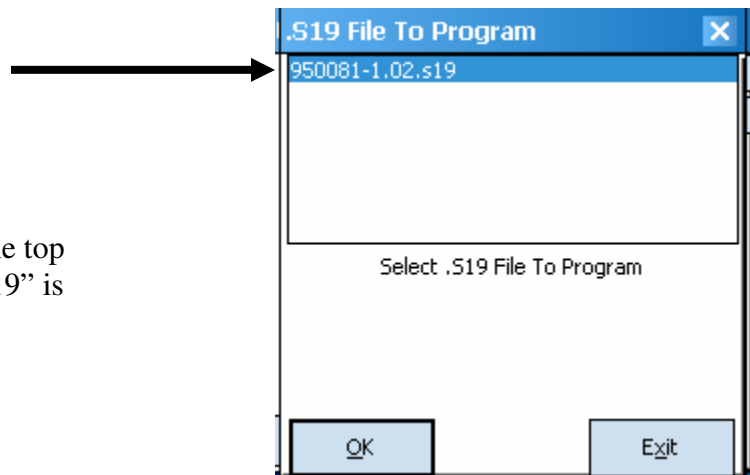
TECHNICAL BULLETIN: SES-0925076-A

- Then SELECT the “Program Flash” button



Then HIGHLIGHT the proper “.S19” file for the lock you are about to program.

-



NOTE: In this example the top selection “950081-1.02.s19” is being selected.

Step 3: Upgrade (or flash) a lock with new firmware

- Using the lock Programming Credential or Programming Code, put the lock into programming mode.

NOTE: The Red and Green LEDS should flash momentarily a few times.

Contact Technical Support for any questions concerning this Technical Bulletin
866.322.1237 – 8 AM to 8 PM (EST) - M/F

www.irsupport.net

Page 4 of 8

Technical Services

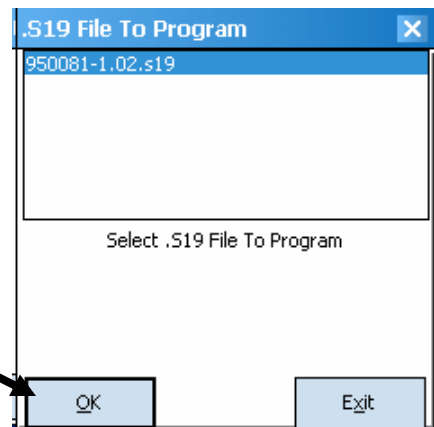
TECHNICAL BULLETIN: SES-0925076-A

- Then connect the Pocket PC to the lock using the Pocket PC autosync cable and CIP.
- Plug the CIP into the lock (ensure the CIP is in the proper orientation)

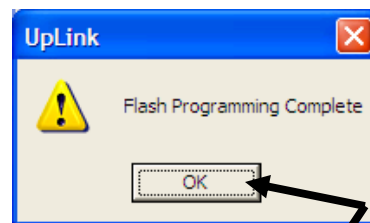
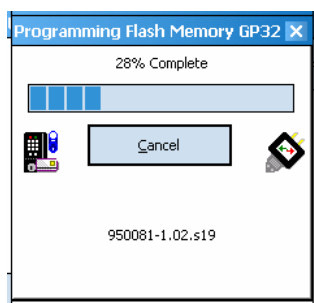
IMPORTANT: Make sure that the cable connection between your PocketPC, your CIP and your lock are secure. Interruption of this download process will cause the lock to become inoperative !

- Then SELECT the OK button on the Pocket PC Flash Utilities Screen.

DONOT TOUCH THE POCKET PC SCREEN or REMOVE THE AUTOSYN CABLE BEFORE THIS PROCEDURE IS COMPLETED



- The Pocket PC will display a status bar as the programming takes place followed by a confirmation screen.



- Then click on the OK button to complete the firmware update process

IMPORTANT: Verify the lock is operating normally by testing with a valid User Credential or Code after completing the firmware upgrade (flash) procedure.

Contact Technical Support for any questions concerning this Technical Bulletin
866.322.1237 – 8 AM to 8 PM (EST) - M/F

www.irsupport.net

Page 5 of 8



www.schlage.com

Technical Services

TECHNICAL BULLETIN: SES-0925076-A

Step 4: Repeat for additional locks

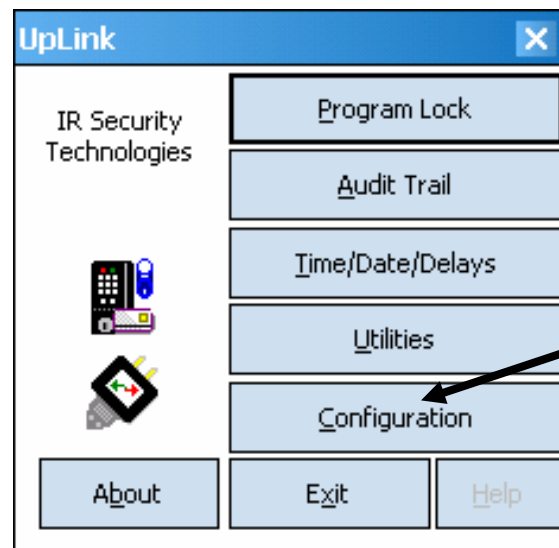
- Repeat step 3 for each additional locks of the same lock type (KC2 or CM/CL) requiring a firmware update using the same .S19 firmware file.
- Repeat steps 1 through 3 for other lock types that require a different S19 firmware file.

Step 5: Verifying the firmware revision

- On your PDA, click on “Start” and select “Programs” from the dropdown list
- Click on the CEUplink icon to run the CEUplink application
- SELECT the “Configuration” button.

NOTE

The CEUplink PASSWORD might be required at this step (Default password is 123456)



Contact Technical Support for any questions concerning this Technical Bulletin
866.322.1237 – 8 AM to 8 PM (EST) - M/F

www.irsupport.net

Page 6 of 8



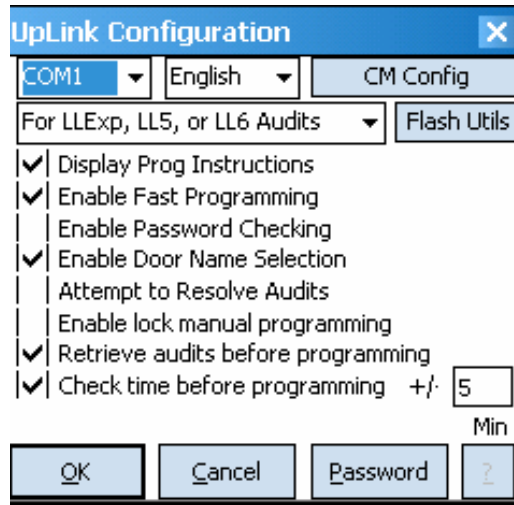


www.schlage.com

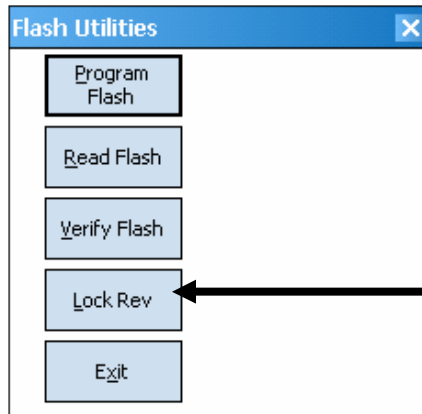
Technical Services

TECHNICAL BULLETIN: SES-0925076-A

- Then SELECT the “Flash Utils” button.



- Then SELECT the “Lock Revision” button



Contact Technical Support for any questions concerning this Technical Bulletin

866.322.1237 – 8 AM to 8 PM (EST) - M/F

www.irsupport.net

Page 7 of 8

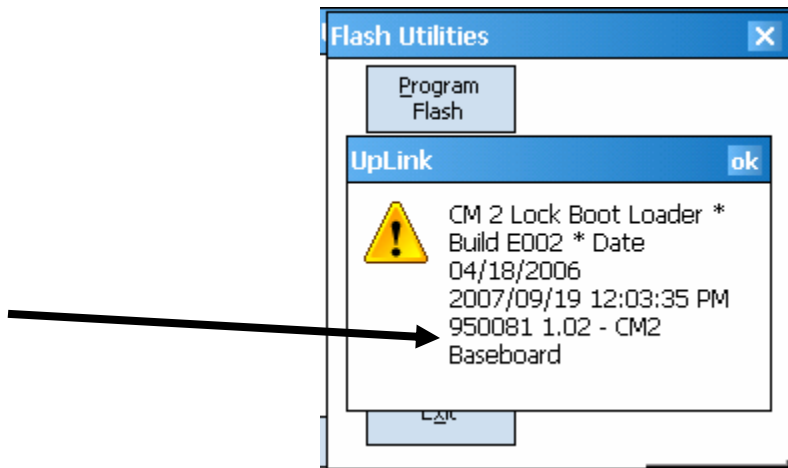


Technical Services

TECHNICAL BULLETIN: SES-0925076-A

- The PocketPC will display the firmware version of your lock.

In this example the lock is firmware version 950081.102



Contact Technical Support for any questions concerning this Technical Bulletin

866.322.1237 – 8 AM to 8 PM (EST) - M/F

www.irsupport.net

Page 8 of 8