



www.schlage.com

Technical Services

Technical Guide for SES-20080430-A

SNAP Firmware Update Procedure

Important! Before you begin to update the SNAP Firmware, make sure that you have all the required materials listed below.

Required Materials:

1. SNAP Firmware Update Guide
2. SNAP Firmware Update Files.zip
3. SNAP
4. SNAP Programming Cable
5. USB Cable to connect SNAP to PC
6. Wire with clips on each end

Upgrading the firmware will take anywhere from 10 to 30 minutes. Overall it is a fairly simple process that is split into 6 distinct parts:

- 1. Installing Atmel Flip Utility**
- 2. Preparing the SNAP for Firmware Update**
- 3. Installing the SNAP**
- 4. Using Atmel Flip Utility to Update the SNAP Firmware**
- 5. Reset SNAP**
- 6. Verify Firmware Update**

After completing these 6 parts, you should have a fully functional SNAP with the most recent firmware available.

Contact Technical Support for any questions concerning this document.
866.322.1237 or visit www.irsupport.net





www.schlage.com

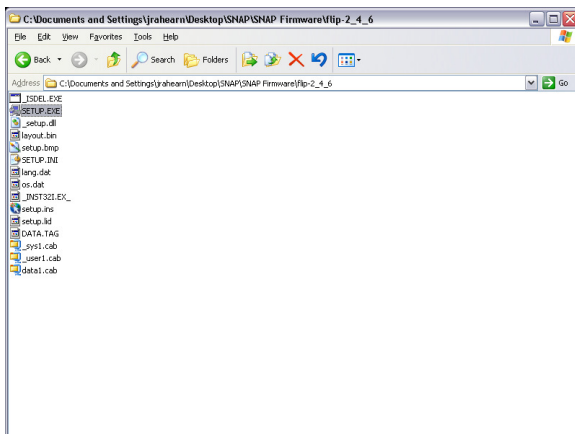
Technical Services

Technical Guide for SES-20080430-A

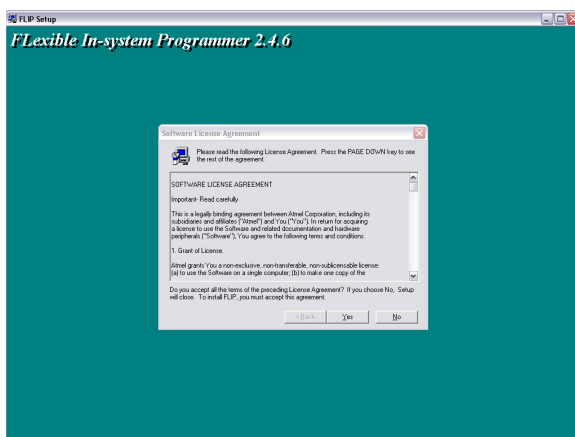
1. Installing Atmel Flip Utility

Required Items: SNAP Firmware Update Files.zip

First, extract all the files from the SNAP Firmware Update Files.zip file to an empty folder on your hard drive.



You are now going to be installing the Atmel Flip Utility program, which will be used to program the updated firmware into the SNAP. Find the included Flip-2.4.6 folder that was extracted from the .ZIP, and then double click on the SETUP.EXE file.



After loading the setup software, you should be greeted with a screen that looks like the above screen with a software license agreement on it.

Contact Technical Support for any questions concerning this document.

866.322.1237 or visit www.irsupport.net

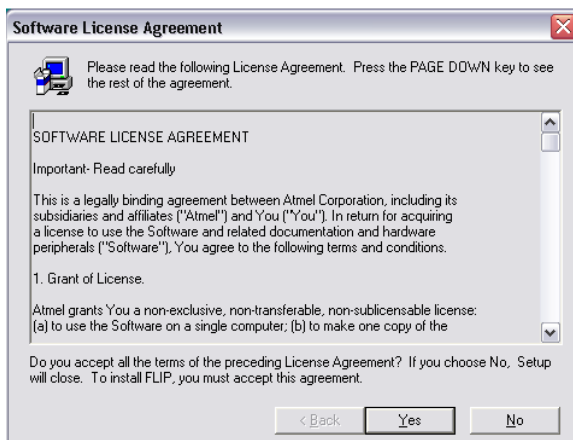




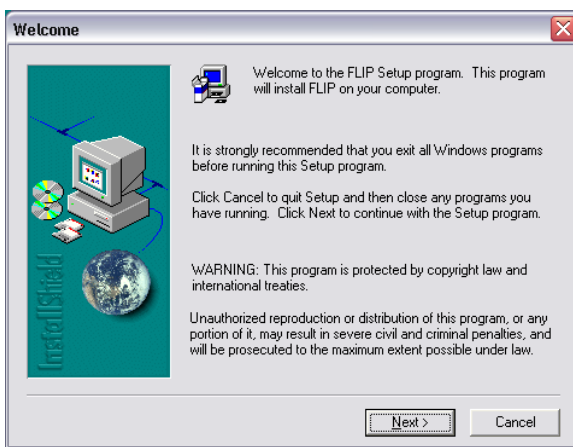
www.schlage.com

Technical Services

Technical Guide for SES-20080430-A



Read the software license agreement then click Yes.



Click Next.

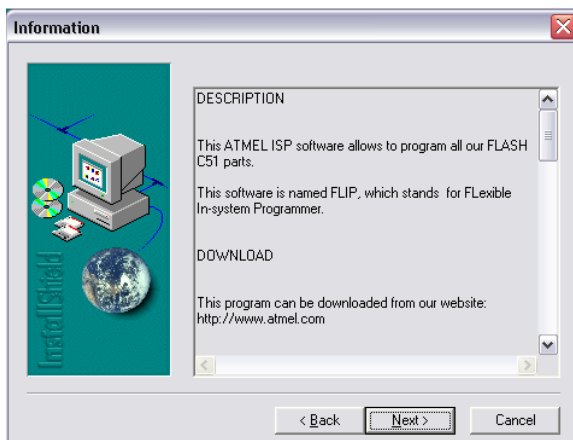
Contact Technical Support for any questions concerning this document.

866.322.1237 or visit www.irsupport.net

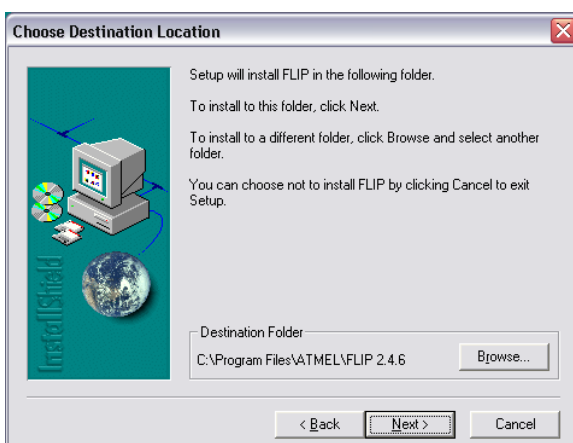


Technical Services

Technical Guide for SES-20080430-A



Click Next.



At the above screen, accept the default destination folder, then click Next.

Contact Technical Support for any questions concerning this document.

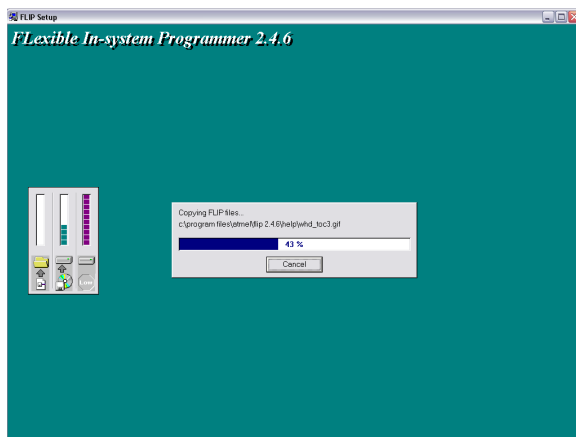
866.322.1237 or visit www.irsupport.net



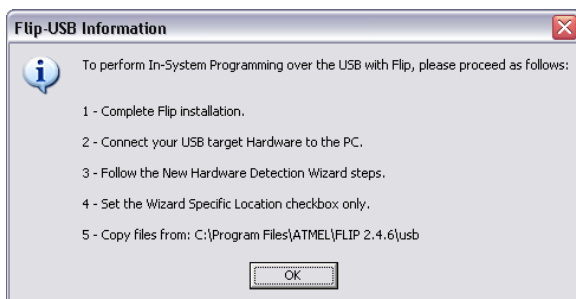
www.schlage.com

Technical Services

Technical Guide for SES-20080430-A



The software should install after a few minutes.



The above popup will show after the Atmel Flip Utility is done being installed. Click OK.

Contact Technical Support for any questions concerning this document.
866.322.1237 or visit www.irsupport.net

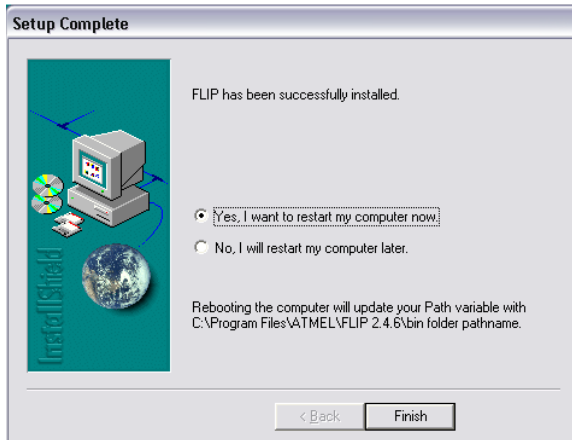




www.schlage.com

Technical Services

Technical Guide for SES-20080430-A



When setup is complete, you will have the option of restarting your computer. Make sure everything else is closed, click “Yes, I want to restart my computer now,” and then click Finish. Your computer should restart. Wait for your computer to completely restart, log back into the computer, and wait for everything to load as normal. After it has fully loaded, you can begin to prepare the SNAP for its firmware update.

Contact Technical Support for any questions concerning this document.
866.322.1237 or visit www.irsupport.net





www.schlage.com

Technical Services

Technical Guide for SES-20080430-A

2. Preparing the SNAP for Firmware Update

Required Items: SNAP, SNAP Programming Cable, Wire with Clips



First you will need the SNAP and the SNAP programming cable.



Contact Technical Support for any questions concerning this document.
866.322.1237 or visit www.irsupport.net





www.schlage.com

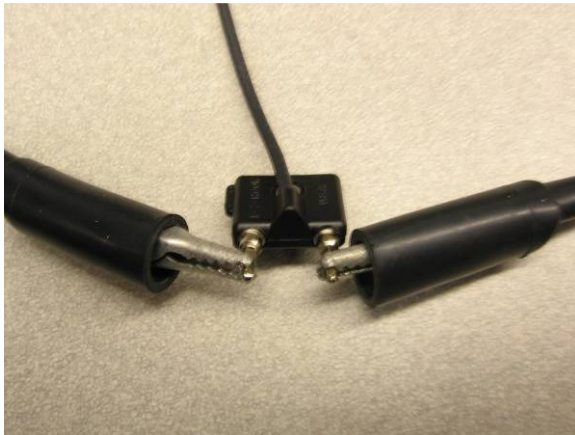
Technical Services

Technical Guide for SES-20080430-A

Attach the programming cable to the top of the SNAP.



Take one end of the wire with clips on it, and clip one end of the wire to one of the pins on the end of the programming cable.



Take the other end of the wire and clip it to the other pin. This creates a short between the two pins.

Contact Technical Support for any questions concerning this document.

866.322.1237 or visit www.irsupport.net





www.schlage.com

Technical Services

Technical Guide for SES-20080430-A



When you are completed your SNAP should look like the above picture.

Contact Technical Support for any questions concerning this document.
866.322.1237 or visit www.irsupport.net





www.schlage.com

Technical Services

Technical Guide for SES-20080430-A

3. Installing the SNAP

Required Items: Atmel Flip Utility installed, prepared SNAP, USB Cable



First, plug one end of the USB cable into the SNAP.



Plug the other end into your computer with the Atmel Flip Utility loaded on it.

The SNAP does not need to be turned on and there will be NO display during this process.

Contact Technical Support for any questions concerning this document.
866.322.1237 or visit www.irsupport.net





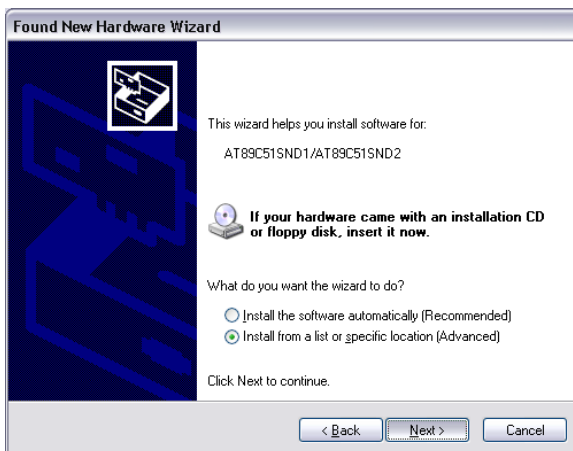
www.schlage.com

Technical Services

Technical Guide for SES-20080430-A



After a short time, the above *Found New Hardware Wizard* window should pop up on your screen. Click the option “No, not this time” and then click next.



Click “Install from a list or specific location (Advanced)” then click next.

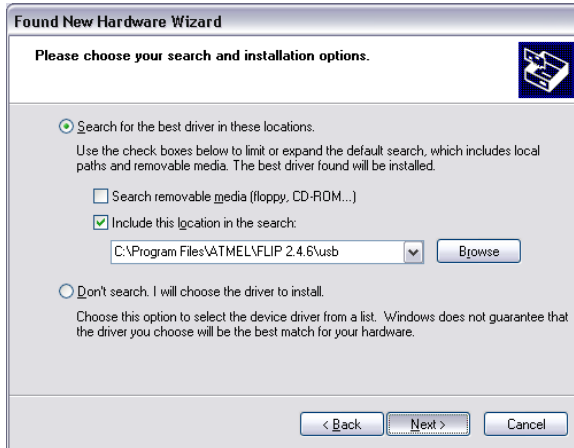
Contact Technical Support for any questions concerning this document.

866.322.1237 or visit www.irsupport.net

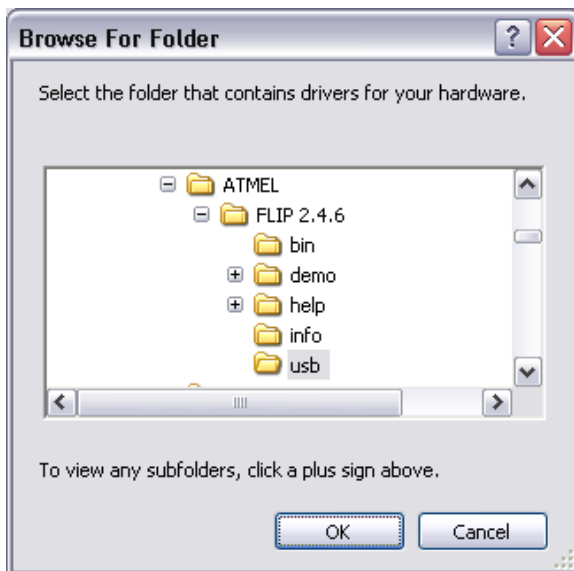


Technical Services

Technical Guide for SES-20080430-A



Click “Search for the best driver in these locations” and then check “Include this location in the search.” Click browse.



Browse to the folder where Atmel Flip Utility is installed, and then select the folder “usb” in the Flip folder. Click OK.

Contact Technical Support for any questions concerning this document.

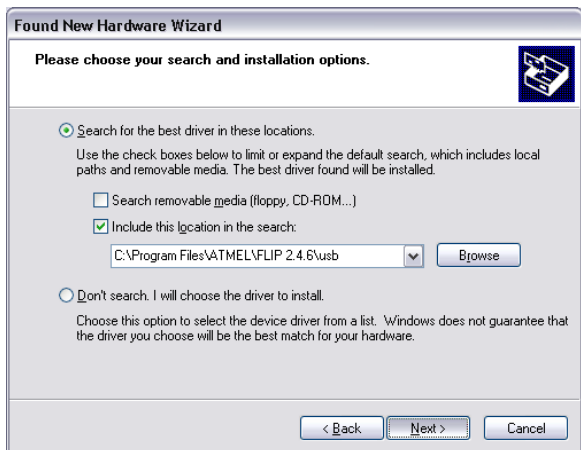
866.322.1237 or visit www.irsupport.net



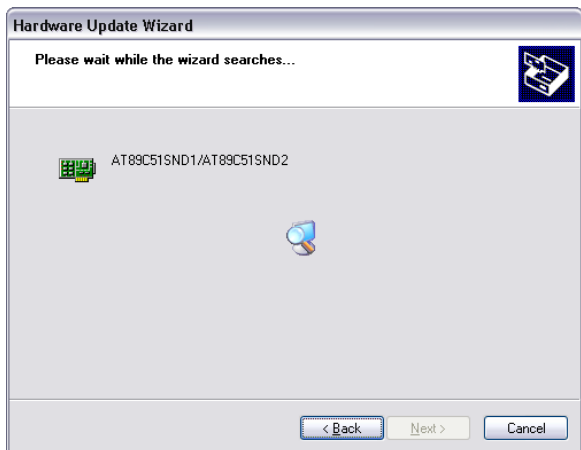
www.schlage.com

Technical Services

Technical Guide for SES-20080430-A



Click Next.



Wait for the driver to install.

Contact Technical Support for any questions concerning this document.
866.322.1237 or visit www.irsupport.net





www.schlage.com

Technical Services

Technical Guide for SES-20080430-A



Click Finish.

Now that you have everything installed and prepared, it is time to begin upgrading the firmware on the SNAP.

Contact Technical Support for any questions concerning this document.
866.322.1237 or visit www.irsupport.net





www.schlage.com

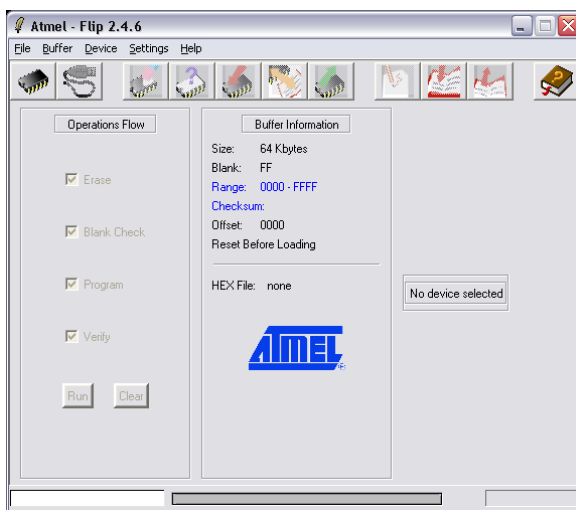
Technical Services

Technical Guide for SES-20080430-A

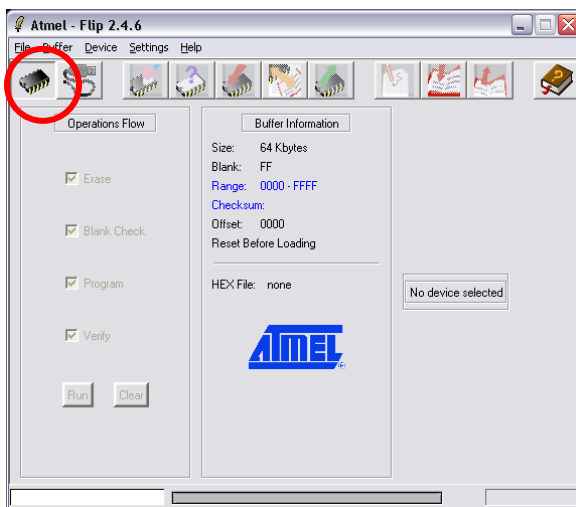
4. Using Atmel Flip Utility to Update the SNAP Firmware

Required Items: Atmel Flip Utility installed, SNAP prepared and connected to PC

First you need to open up the Atmel Flip Utility by either double clicking on the icon on the desktop or opening it from the start menu.



Once the Atmel Flip Utility is loaded, the above window should be visible on the screen.



Click the icon that looks like an IC in the top right corner of the window.

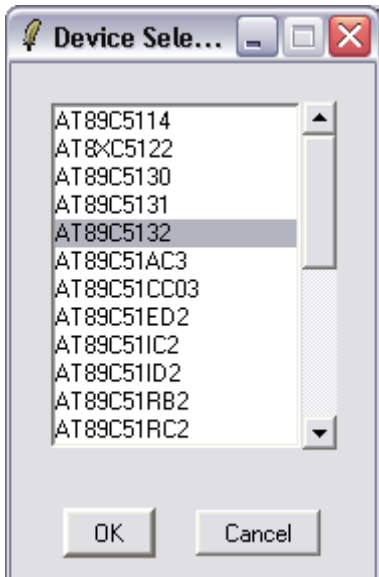
Contact Technical Support for any questions concerning this document.

866.322.1237 or visit www.irsupport.net

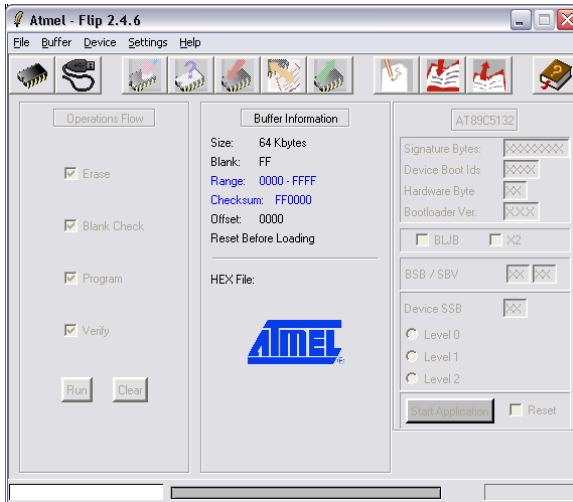


Technical Services

Technical Guide for SES-20080430-A



The above window should pop up. From the list, select the option AT89C5132. Then click OK.



The program should load the information for the AT89C5132 in the right hand frame of the window that is grayed out.

Contact Technical Support for any questions concerning this document.

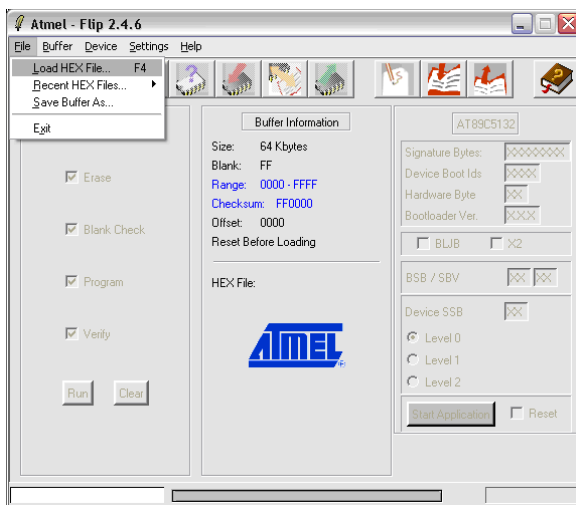
866.322.1237 or visit www.irsupport.net



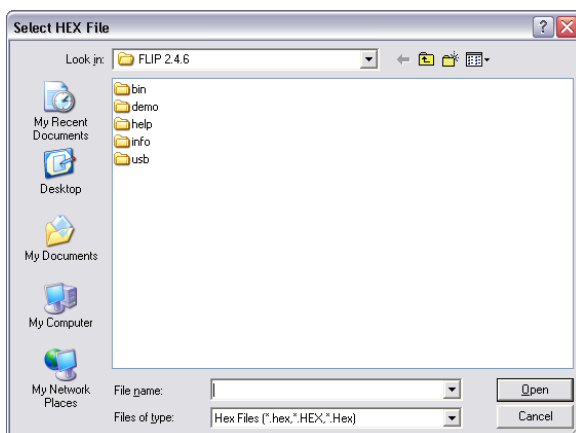
www.schlage.com

Technical Services

Technical Guide for SES-20080430-A



Next, click File and then Load HEX File.



The above window should pop up.

Contact Technical Support for any questions concerning this document.

866.322.1237 or visit www.irsupport.net

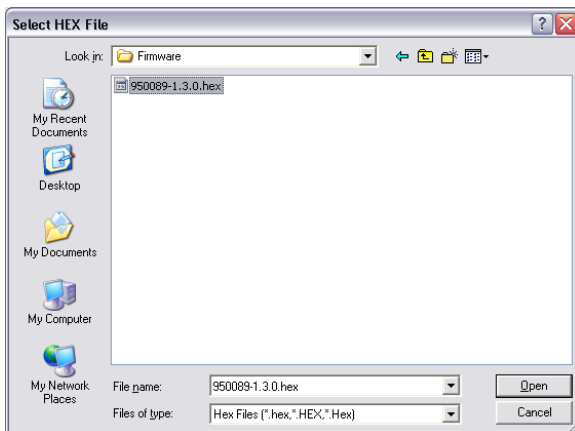




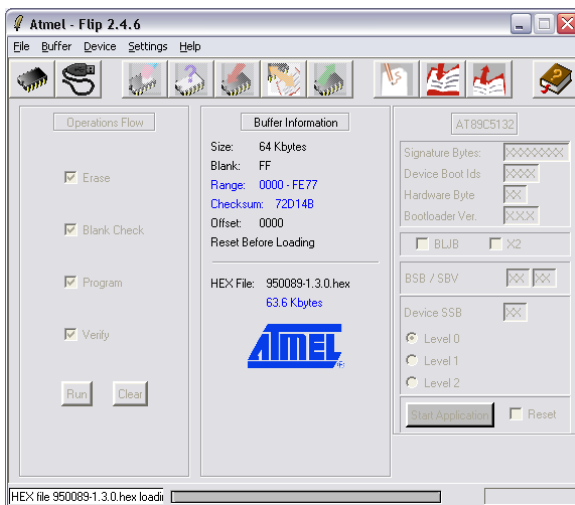
www.schlage.com

Technical Services

Technical Guide for SES-20080430-A



Navigate to the folder where you have stored the firmware that was included with this guide. It should be named **snap_1_3_3.hex**. Select that file then click Open.



The buffer information and hex file information in the center of the screen should be updated to show the proper checksum (733FCC) and proper hex file name (snap_1_3_3.hex) of the firmware.

Contact Technical Support for any questions concerning this document.

866.322.1237 or visit www.irsupport.net

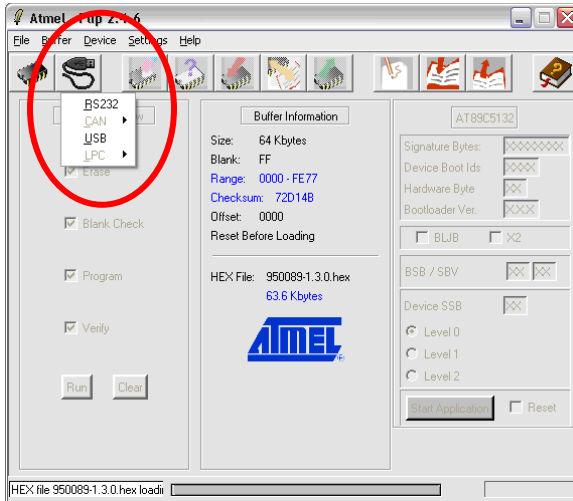




www.schlage.com

Technical Services

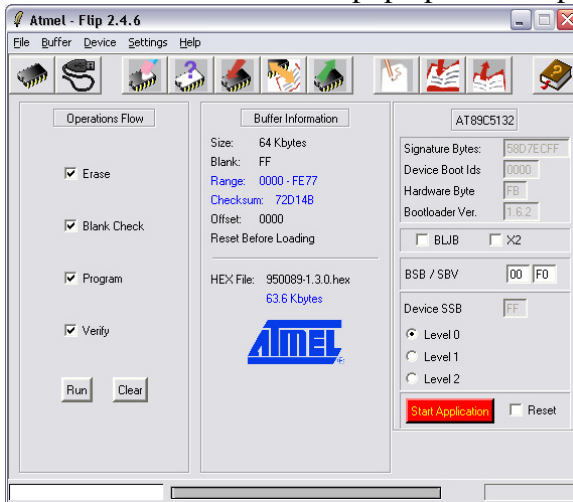
Technical Guide for SES-20080430-A



In the top right, click the icon that looks like the end of a USB Cable. A small menu should appear immediately below the icon. Click the USB option.



The above window should pop up. Click Open.



Click back over to the main Atmel Flip Utility window. Everything should now be active and look like the above window.

Contact Technical Support for any questions concerning this document.

866.322.1237 or visit www.irsupport.net

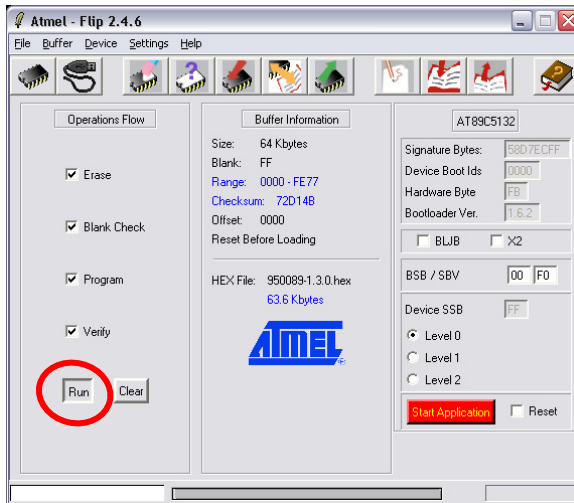




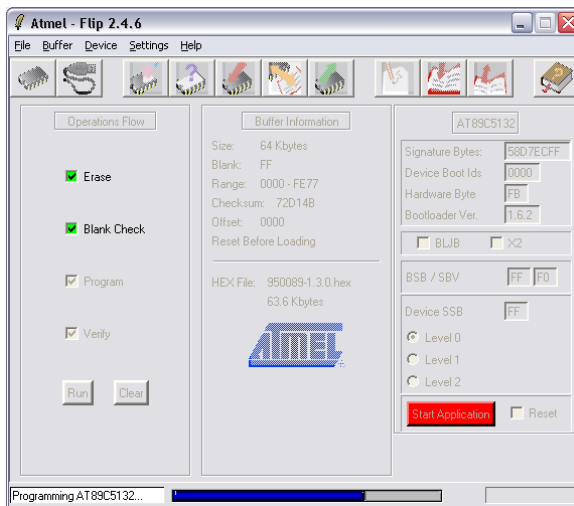
www.schlage.com

Technical Services

Technical Guide for SES-20080430-A



Click the Run button near the bottom of the leftmost frame.



The software should go through its programming sequence and update the firmware on the SNAP.

Contact Technical Support for any questions concerning this document.

866.322.1237 or visit www.irsupport.net

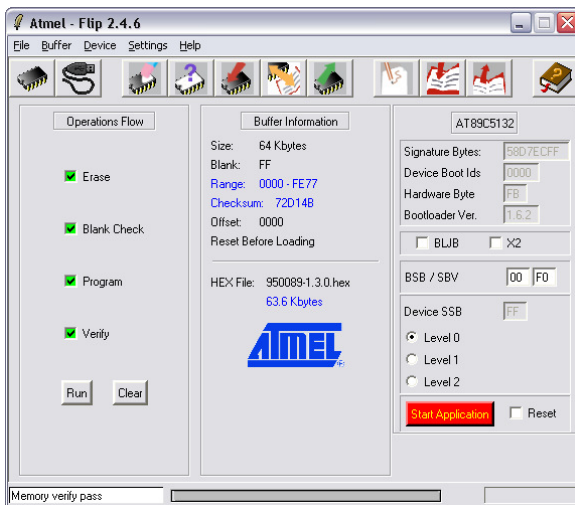




www.schlage.com

Technical Services

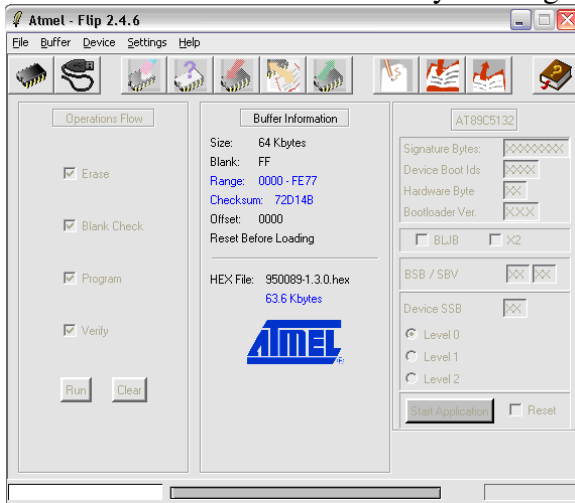
Technical Guide for SES-20080430-A



When the software has finally completed updating the firmware, all the checkmarks should have green backgrounds and the status bar in the bottom left will say “Memory verify pass.”



Click back over to the USP Port Connections window, and click Close. Then close the USB Port Connections window by clicking the red X.



Contact Technical Support for any questions concerning this document.

866.322.1237 or visit www.irsupport.net





www.schlage.com

Technical Services

Technical Guide for SES-20080430-A

Click back over to the main window. It should now look like the above window, with everything grayed out again. Close out of the Atmel Flip Utility. You are now done upgrading the firmware in the SNAP.

Unplug the USB cable from the SNAP and remove the wire with clips from the pins on the programming cable.

You now must manually reset the SNAP using the steps in section 5.

Contact Technical Support for any questions concerning this document.
866.322.1237 or visit www.irsupport.net





www.schlage.com

Technical Services

Technical Guide for SES-20080430-A

5. Reset SNAP

Required Items: SNAP with updated firmware

Before the SNAP will begin to work properly with the new firmware, it will need to be manually reset.



First, flip over the SNAP so its back is facing you.



Remove the battery cover.

Contact Technical Support for any questions concerning this document.

866.322.1237 or visit www.irsupport.net





www.schlage.com

Technical Services

Technical Guide for SES-20080430-A



Remove one battery.



Flip the SNAP over and press a few buttons. It does not matter which buttons you press, as long as the battery is still removed.

Contact Technical Support for any questions concerning this document.

866.322.1237 or visit www.irsupport.net





www.schlage.com

Technical Services

Technical Guide for SES-20080430-A



Flip the unit back over, replace the battery, and then replace the battery cover.

Contact Technical Support for any questions concerning this document.
866.322.1237 or visit www.irsupport.net





www.schlage.com

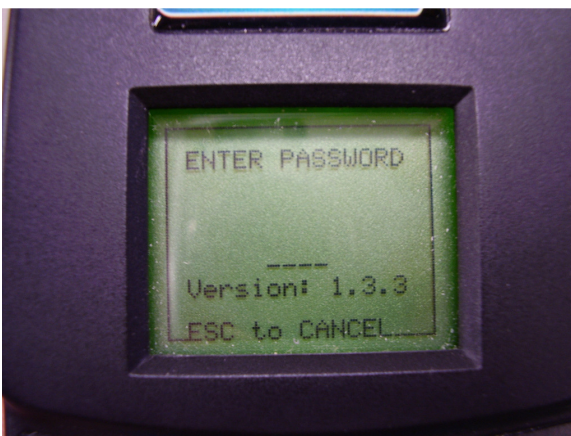
Technical Services

Technical Guide for SES-20080430-A

6. Verify Firmware Update

Required Items: SNAP that has been updated and reset

Once the SNAP is back together, turn the SNAP on to make sure it works.



If everything has worked properly, your SNAP should look like the above picture, prompting you to enter your password.

If the SNAP reads firmware version 1.3.3 then congratulations! You have finished upgrading the firmware on the SNAP to the most recent version. You may now use your updated SNAP to update the programming in your locks.

Contact Technical Support for any questions concerning this document.
866.322.1237 or visit www.irsupport.net

