

RELEASE NOTES:

SES-20141215-B



Product Release Information: Schlage Utility Software

Product	Schlage Utility Software (SUS)
Version Number	Version: 6.1.1
Engineering Release Date	December 15, 2014
Production Release Date	December 2014
Customer Support	For more information or support, visit our website .

Attention:

This document contains the release notes for SUS version 6.1.1. The following sections describe the release in detail and will provide other information that supplements the SUS User Guide.

Installation and Upgrade Notes:

Installation

Refer to the “SUS Update Guide” Section of the SUS User Guide – Appendix A for full details. You can find the latest User Guide [here](#) or at the Schlage Support Site [here](#) under Electronic Locks -> AD Series-> Schlage Utility Software -> Installation Manuals -> Schlage Utility Software User Guide.

Who should upgrade?

Allegion recommends keeping all devices up to date with the latest firmware and software. We strive to provide the best products and service for our customers. Our latest firmware and software releases will allow the customer to get the most from their devices.

Specifically, all customers interested in the following should update:

- AD-200/250 Privacy Mode: Interior LED Status Blinking
- Any maintenance updates described in the “Recent Changes” below
- Customers who use the newer BM-170 Hand Held to manage their devices (HHD-KIT-USB)

Version Compatibility:

SUS 6.1.1 is compatible with the following firmware packages:

- AD-Series Firmware Package – AD.A.71 (or earlier)
- CO-Series Firmware Package – CO.A.12 (or earlier)

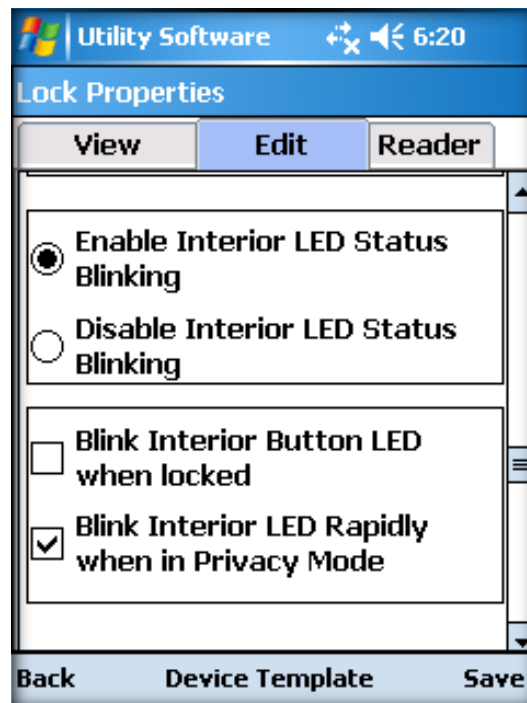
RELEASE NOTES:

SES-20141215-B



New Features:

- Now supports the new BM-170 Hand Held Device (HHD) for use with all USB communication devices
 - NOTE: Customers with Serial Communication devices must use the previous original BM-150 HHD (BE367, CMs, Legacy Products)
- AD-200/250 Privacy Mode New SUS Lock Properties Options



- “Enable/Disable Interior LED Status Blinking”
 - Enable or Disable the Interior LED’s Status Blinks
 - The Status Blinking is set by the next two checkboxes
- Blink Interior Button LED when locked
 - Blinks the Interior LED Red when locked
- Blink Interior LED Rapidly when in Privacy Mode
 - Rapidly blinks the Interior LED Red when in Privacy Mode

RELEASE NOTES:

SES-20141215-B



- This feature requires updating lock firmware to AD.A.71 or later
 - *Please see the AD.A.71 release notes for more details on the AD.A.71 firmware package*

Recent Changes:

- CO-220 Lock Properties: Options that are not compatible with CO-220 have been grayed out and can no longer be selected
 - Record Lock/Unlock
 - Blink Interior Button LED when locked
 - Disable Interior Button LED
- “Reader Type” field of Lock Properties has been updated with clear and consistent descriptions

Old Description	New Description
Magnetic	MagInsert + Keypad
RDR MAG NO KPD	MagInsert
RDR MAGSW	MagSwipe + Keypad
RDR MAGSW NO KPD	MagSwipe
RDR KP	Keypad
Proximity	Proximity + Keypad
RDR PROX NO KPD	Proximity
RDR_SMART	Smart Card + Keypad
RDR SMART NO KPD	Smart Card
FMK	FIPS + Multi-Tech + Keypad
RDR MT	Multi-Tech + Keypad
RDR MT NO KPD	Multi-Tech
RDR MI	iClass + Multi-Tech + Keypad
RDR MI NO KPD	iClass + Multi-Tech

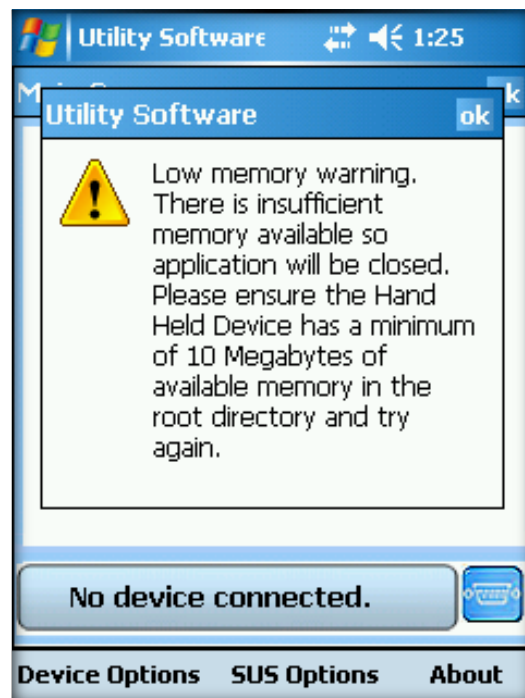
- The PIM400-485-SBB has been renamed to PIM400-485-VBB
 - The change was made to reflect the PIM400-485-VBB’s interface with Vanderbilt Industries

RELEASE NOTES:

SES-20141215-B



- A new Low Memory Warning is now provided to ensure proper operation of the HHD
 - This warning is displayed immediately after successful login, when the available memory on the HHD is insufficient to guarantee proper operation
 - The HHD requires a minimum of 10MB memory available
 - If there is less than 10MB of memory available on the HHD, SUS will display the following error message



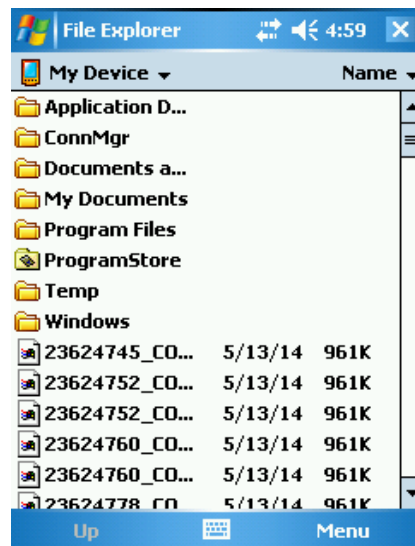
Low Memory Warning

RELEASE NOTES:

SES-20141215-B

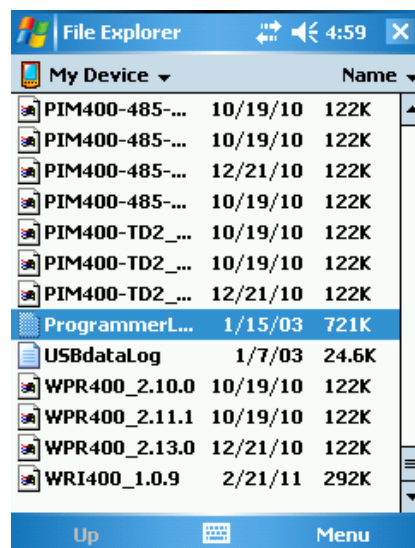


- Use the HDD's File Explorer to delete unwanted files from memory
 - Check that the File Explorer is set to the "My Device" root directory from the pull down menu



File Explorer – My Device Root Directory

- Check the "My Device" directory for old firmware package files, ProgrammerLog, or USBdataLog files that can easily be deleted



ProgrammerLog and USBdataLog Files can be deleted when needed

- Click on the file, then click on menu and select "Delete" to delete the file from memory

RELEASE NOTES:

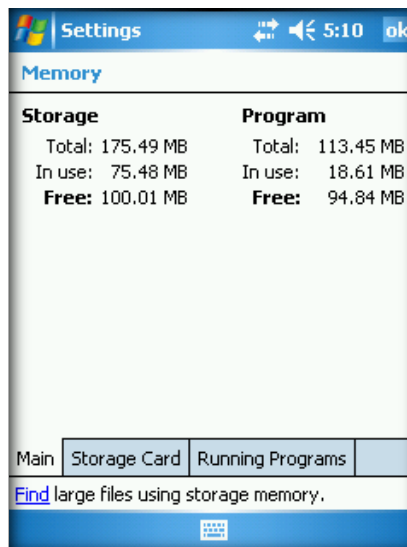
SES-20141215-B



- To check available memory:
 - Open the Settings menu and click on the “System” Tab



- Select “Memory” from the System Settings Options



100.01MB Free memory now available

- The amount of available memory is listed under **Storage** in the left “**Free:**” category

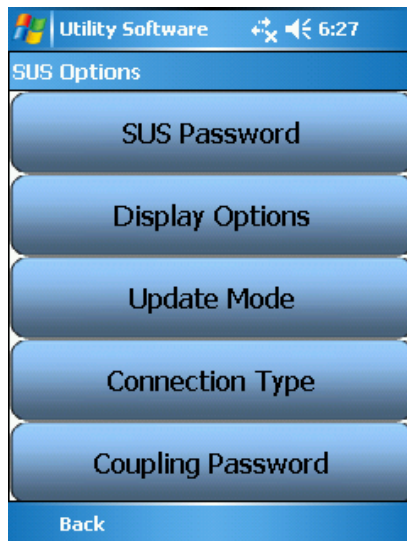
RELEASE NOTES:

SES-20141215-B

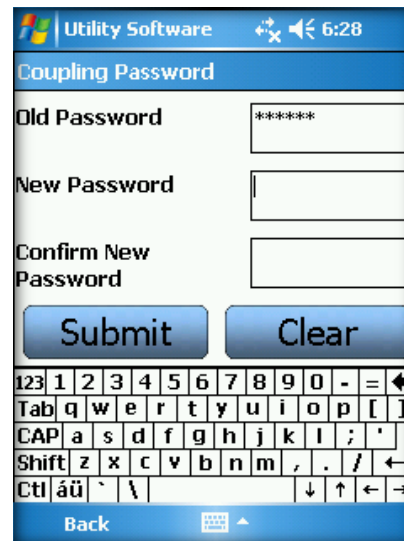


Cautions:

- Reloading a new version of the SUS will clear the **Coupling Password** from the HDD's memory
 - Be sure the **Coupling Password** is known before updating SUS
 - After reloading a new version of the SUS, the **Coupling Password** will be the SUS **DEFAULT** setting.
 - Use the **SUS Options** menu to set the correct **Coupling Password**.



SUS Options Screen



Coupling Password Screen

RELEASE NOTES:

SES-20141215-B



Revision History	Description	Date
A	original release	15-Dec-15
B	Update for BM-170	29-Jan-15