



72043

1450 Track Series

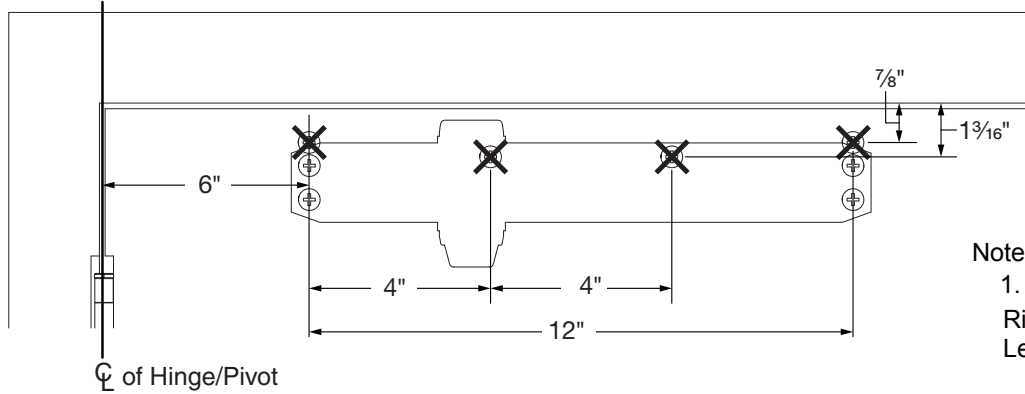


Drop Plate

Installation Instructions

1450 PULL SIDE (DOOR MOUNT) DROP PLATES

Pull side arm mounted on:
1450-18 Drop Plate
1450-18FC Drop Plate

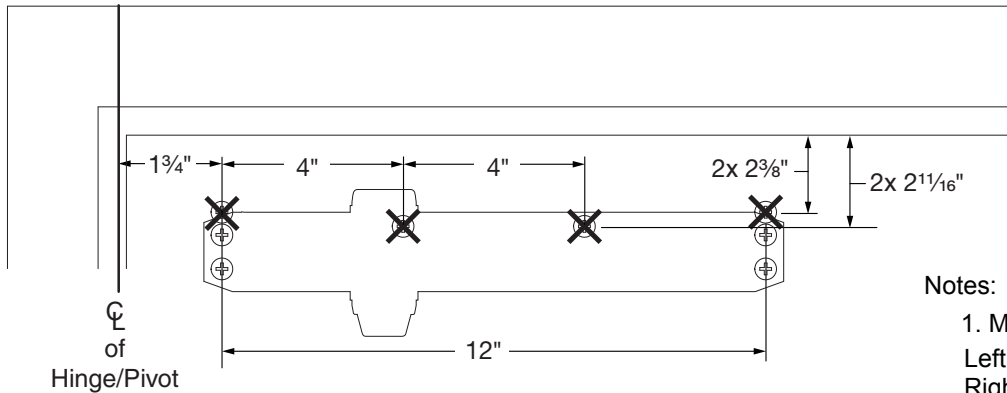


Notes:

1. Minimum top rail width is 1 5/8"
Right hand door shown,
Left hand door opposite

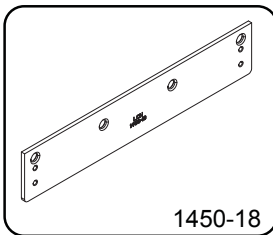
1450 PUSH SIDE (DOOR MOUNT) DROP PLATES

Push side arm mounted on:
1450-18 Drop Plate
1450-18FC Drop Plate

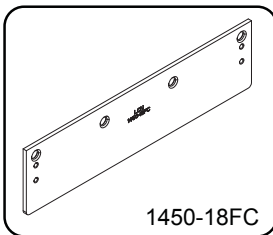


Notes:

1. Minimum top rail width is 3 1/16"
Left hand door shown,
Right hand door opposite



1450-18



1450-18FC

INCH	7/16	1/2	1	1 1/4	1 1/2	1 15/16	2 3/8	2 3/4	4
M.M.	11	13	25	32	38	49	60	70	102
INCH	4 1/8	5 1/2	7	7 3/4	7 7/8	8 1/4	11 1/4	11 5/8	12 3/4
M.M.	105	140	178	197	200	210	286	295	324

General Notes:

1. For 180° Opening On Hinge Face Mounts, Max Buttsize Is 5" X 5"
2. Reinforcing Per ANSI/SDI-100 Recommended For Hollow Metal Doors and Frames.

