



19371

Optional Bumper

LCN®

Installation Instructions

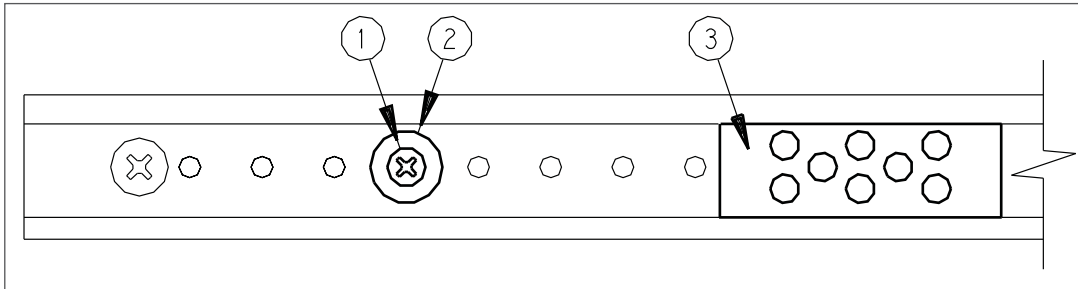
To locate required set of holes for desired degree of door opening. See installation instruction/template.



Improper installation or regulation may result in personal injury or property damage. Follow all instructions carefully. For questions, call LCN at 877 - 671 - 7011

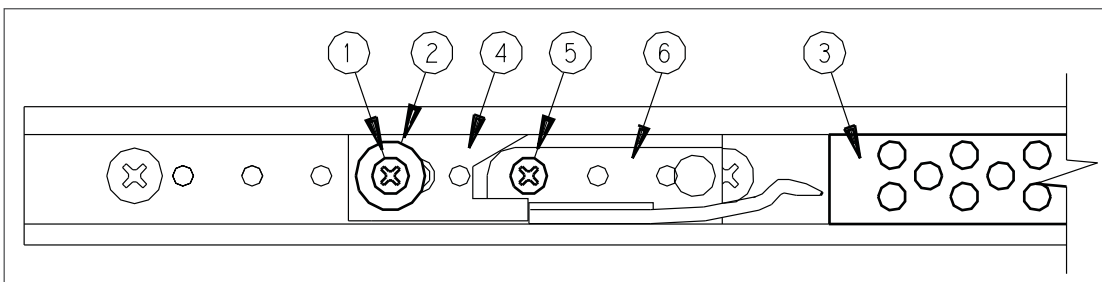
1 Relocation of Bumper, if Required

- Slide bumper (3) away from post (2).
- Remove screw (1) and post (2).
- Reinstall in new hole location and tighten screw securely.
- Slide bumper (3) against post (2).



2 Location Adjustment of Hold Open Device with Bumper Option

- Slide bumper (3) away from post (2).
- Remove screw (1), post (2), adjusting cam (4) and screw (5).
- Slide hold open clip (6) to required hole location.
- Reinstall screw (5) and tighten securely.
- Replace cam (4), post (2), and screw (1) and tighten securely.
- Slide bumper (3) against post (2).

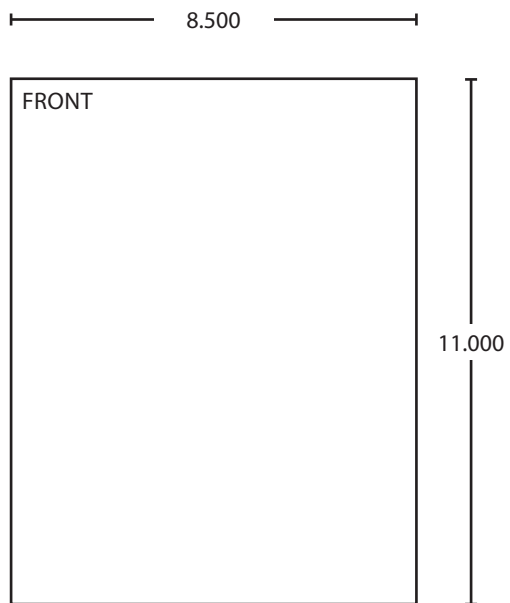


Customer Service

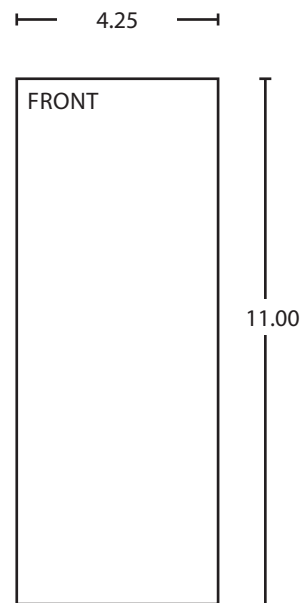
1-877-671-7011 www.allegion.com/us



© Allegion 2014
Printed in U.S.A.
19371 Rev. 01/14-e



BEGINNING SHEET



FOLDED SHEET

Additional Notes:
1. None

Revision History						Revision Description: E > Revised artwork					
E	F	G	H	J	K						
043228											
Material White Paper						Edited By D. Myers		Approved By M. Sasso		EC Number 043228	Release Date 01-01-14
Notes 1. printed one sides 2. printed black 3. tolerance ± .13 4. printed in country may vary 5. drawings not to scale						Title Optional Bumper Installation Instruction Sheet					
						Creation Date 05-10-10		Number 19371			Revision E
						Created By N/A		Activity 3899 Hancock Expwy Security, CO 80911		© Allegion 2014	
						Software: InDesign CS6					