



28073

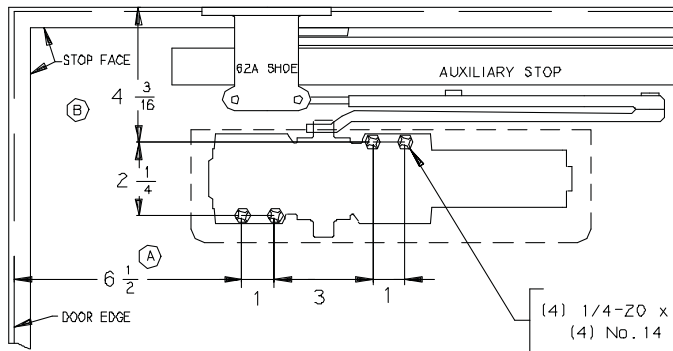
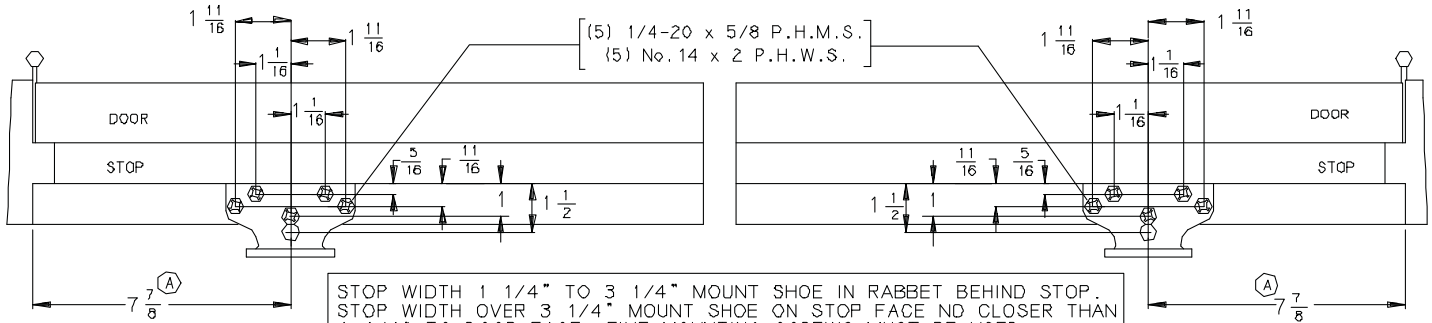
ST-2776

LCN®

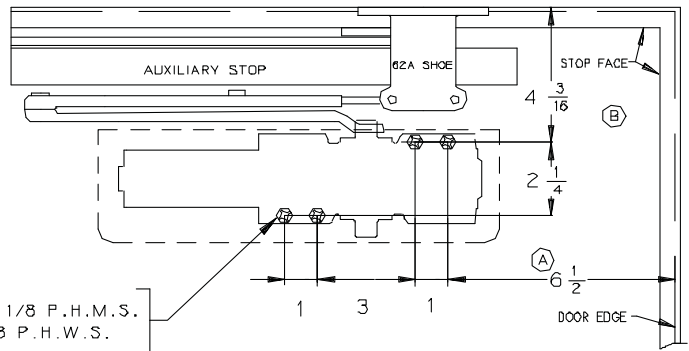
62A Shoe, 4040-18 Plate

Installation Instructions

STOP FACE MOUNTED WITH 62A SHOE

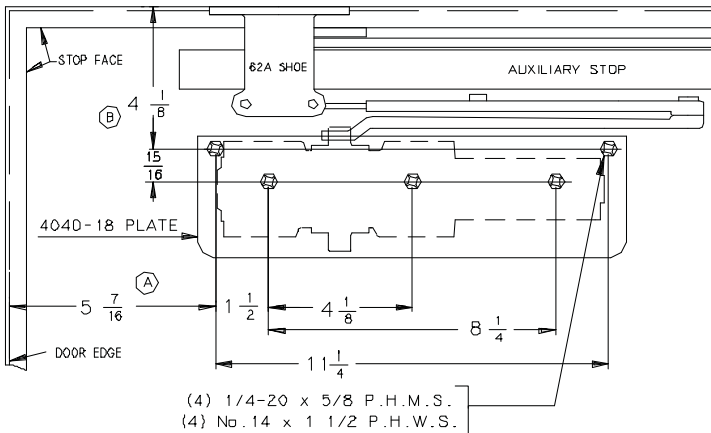
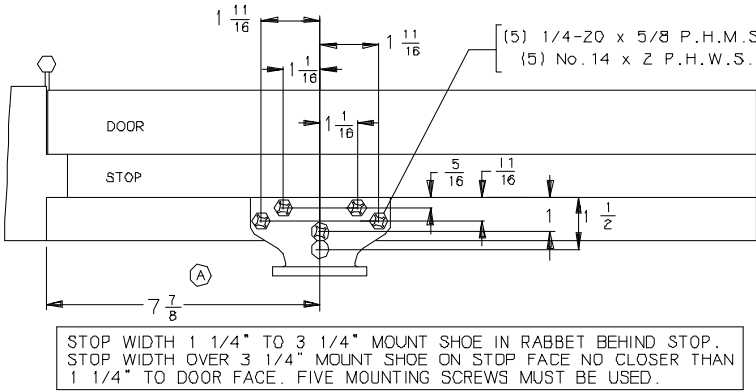


LEFT HAND



RIGHT HAND

STOP FACE MOUNTED WITH 62A SHOE AND 4040-18 PLATE



LEFT HAND SHOWN. RIGHT HAND OPPOSITE

General Notes

- A. Locate closer and shoe from center line of pivot or swing clear hinge when used.
- B. This dimension is always from the same surface as the shoe is mounted on.
- C. Top rail less than 7" requires a drop plate.
- D. The auxiliary stop is shown for reference only. This template may be used to provide clearance for other types of hardware such as coordinators, soundseals etc.
- E. Reinforcing per ANSI/SDI-100 recommended for hollow metal door and frame.
- F. Closer size: 12-1/4 x 3-1/2 x 2-5/32
- G. Backcheck selector valve must be turned all the way in for this installation. Refer to the instruction sheet packed with the closer.

