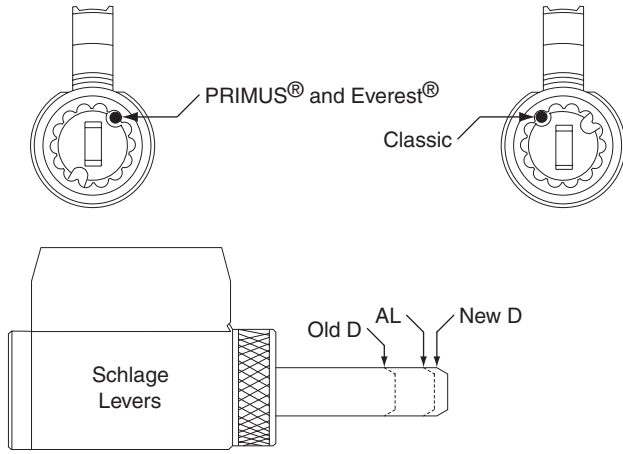


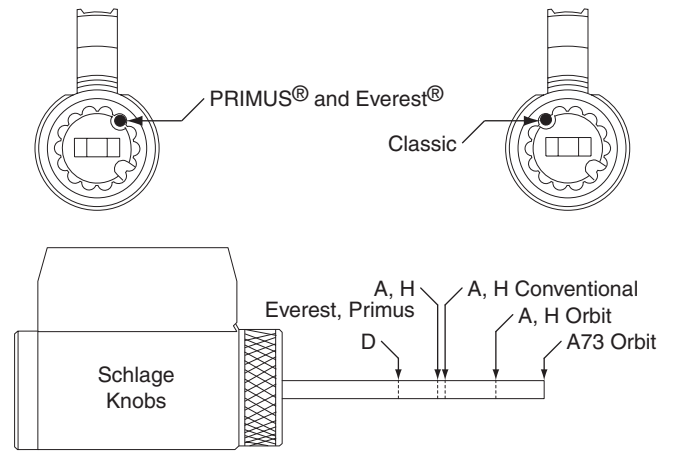
## Key-in-Knob/Lever Tailpieces Chart

**NOTE:** Cylinders and tailpieces are shown approximate size. Match an existing tailpiece against the chart to determine its part number and lock series.

### Vertical Tailpiece for Levers

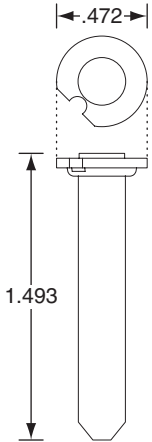


### Horizontal Tailpiece for Knobs



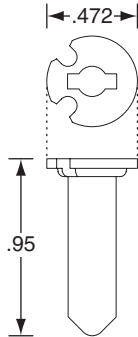
#### A201-934

A73 Orbit  
Classic Conventional



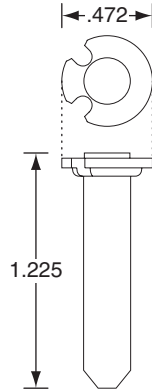
#### A301-337

A, H Except Orbit  
Non-Hotel Functions  
Everest, Primus



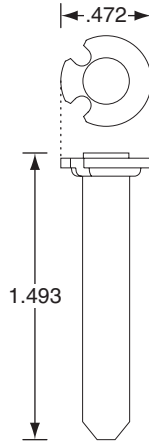
#### A301-338

A, H Orbit  
Non-Hotel Functions  
Except A73  
Everest, Primus



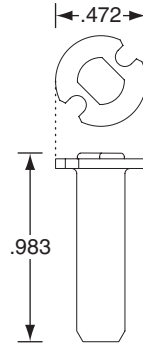
#### A301-339

A73 Orbit  
Everest, Primus



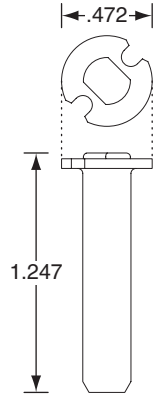
#### A508-606

A, H Except Orbit  
Non-Hotel Functions  
Classic Conventional



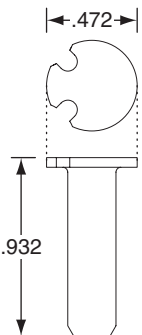
#### A508-614

A, H Orbit  
Non-Hotel Functions  
Except A73  
Classic Conventional



#### A700-031

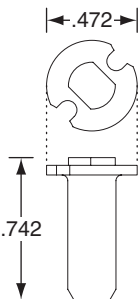
AL Non-Hotel  
Functions  
Classic Conventional  
Everest, Primus



#### C604-243

D Knobs  
Classic Conventional

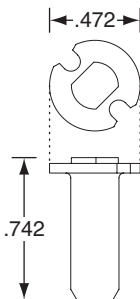
Old D Levers  
Everest, Primus



#### C603-524

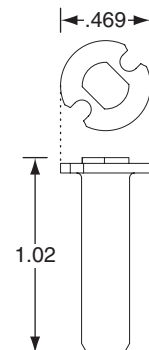
D Knobs  
Everest, Primus

Old D Levers  
Classic Conventional



#### N523-022

New D Levers  
Everest, Primus  
(Black in Color)



#### N523-023

New D Levers  
Classic Conventional  
(Silver in Color)

