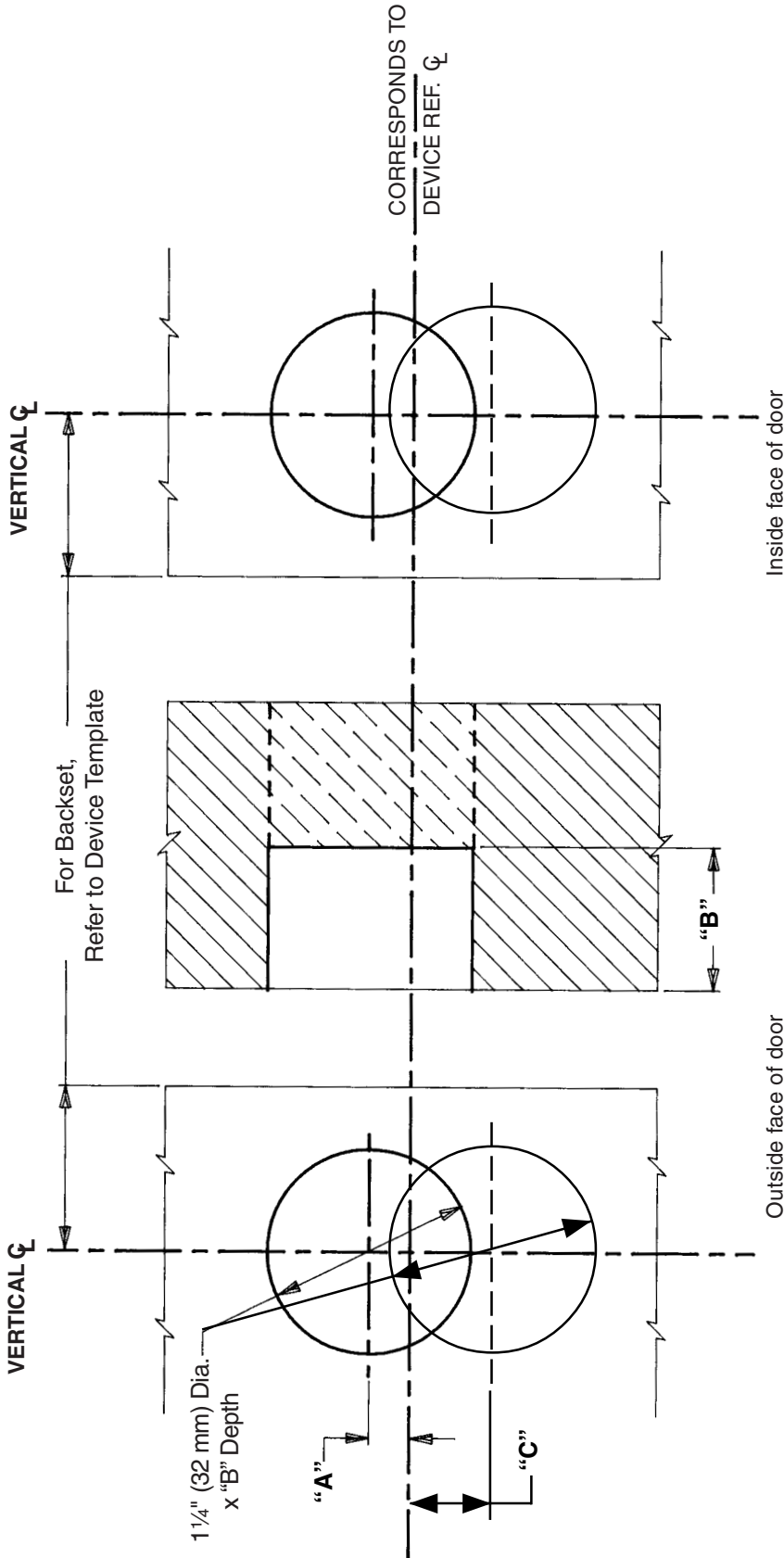


(F)18-R/M/V and (F)XX-R/M/V Cylinder Preparation

Wood Door, LHR Shown, RHR Opposite



| DEVICE | A | B | C |
|------------------------|----------|---------|--------|
| (F)XX-R-C | 1 13/16" | Through | OMIT |
| (F)XX-R-NL (Less pull) | 1 13/16" | Through | OMIT |
| (F)XX-M-C | 1 13/16" | 7/8" | OMIT |
| (F)XX-M-NL (Less pull) | 1 13/16" | 7/8" | OMIT |
| (F)XX-V-C | OMIT | Through | 31/32" |
| (F)XX-V-NL (Less pull) | OMIT | Through | 31/32" |

| DEVICE | A | B | C |
|------------------------|----------|---------|------|
| (F)18-R-C | 1 13/16" | Through | OMIT |
| (F)18-R-NL (Less pull) | 1 13/16" | Through | OMIT |
| (F)18-V-C | 1/4" | Through | OMIT |
| (F)18-V-NL (Less pull) | 1/4" | Through | OMIT |
| (F)18-M-C | 1 13/16" | 7/8" | OMIT |
| (F)18-M-NL (Less pull) | 1 13/16" | 7/8" | OMIT |

TEMPLATE

W-4028-b