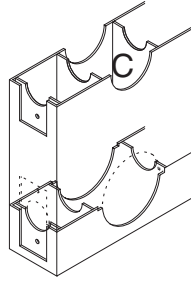
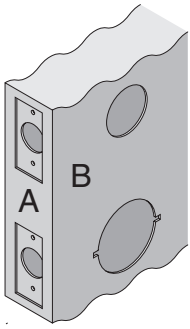
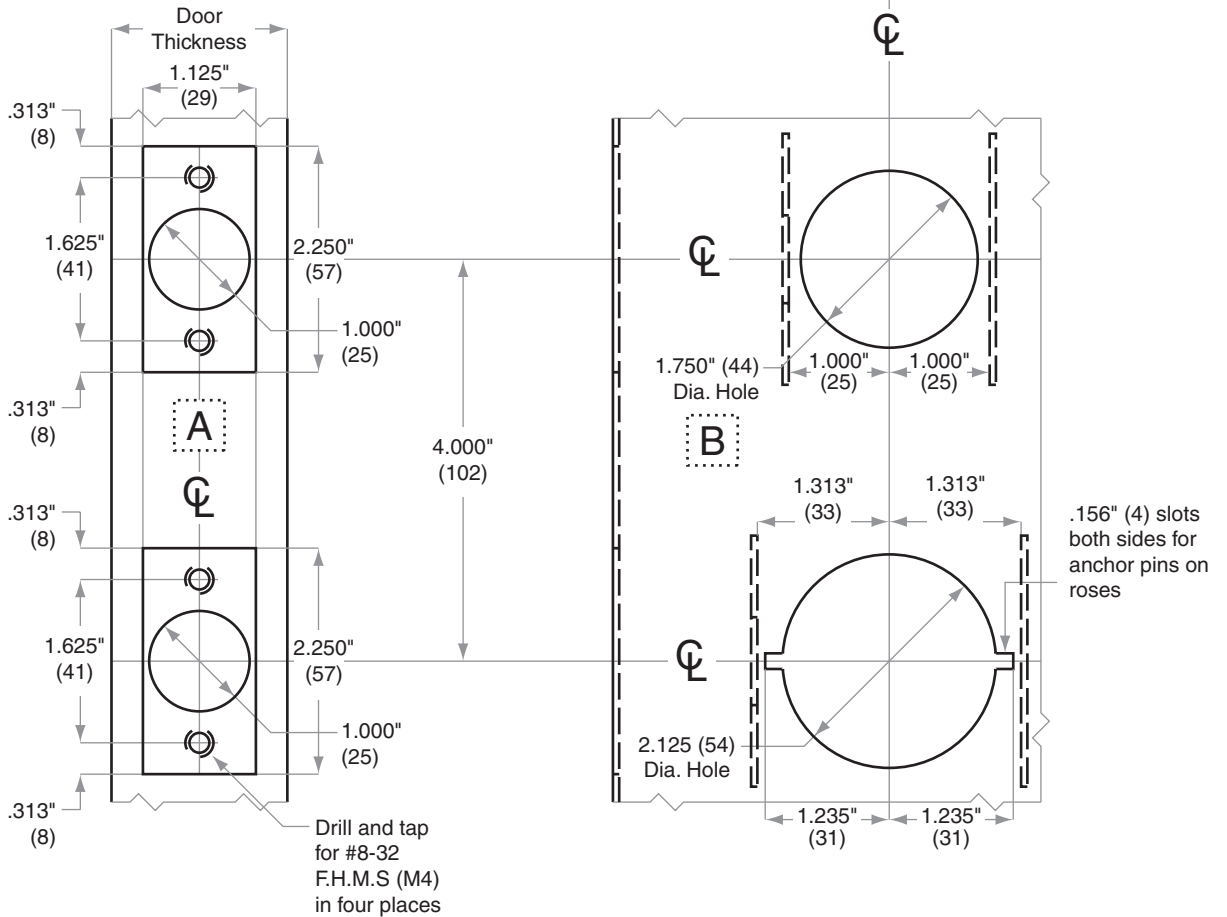
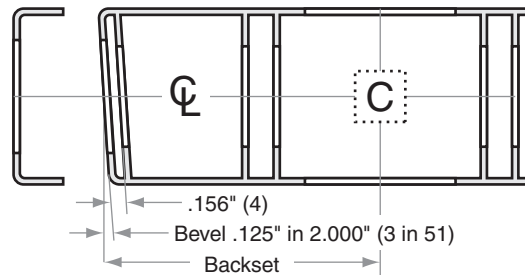


H-Series H101-H511

- Door Type:** Metal, Flat or Beveled
Door Thickness: 1½" (35mm) – 2" (51mm)
Faceplate: Square Corner, 1½" (29mm) wide
Backsets: FH101-C, 2¾" (60mm) | FH101-D, 2¾" (70mm)



For metal door installations, suitable reinforcement is required to support latch in center of door to prevent lateral movement



Dimensions shown in parentheses () are in millimeters.

Door preparation template