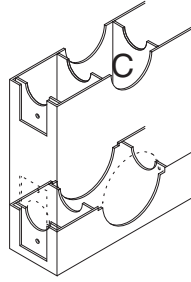
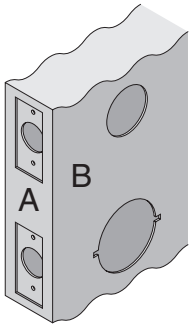
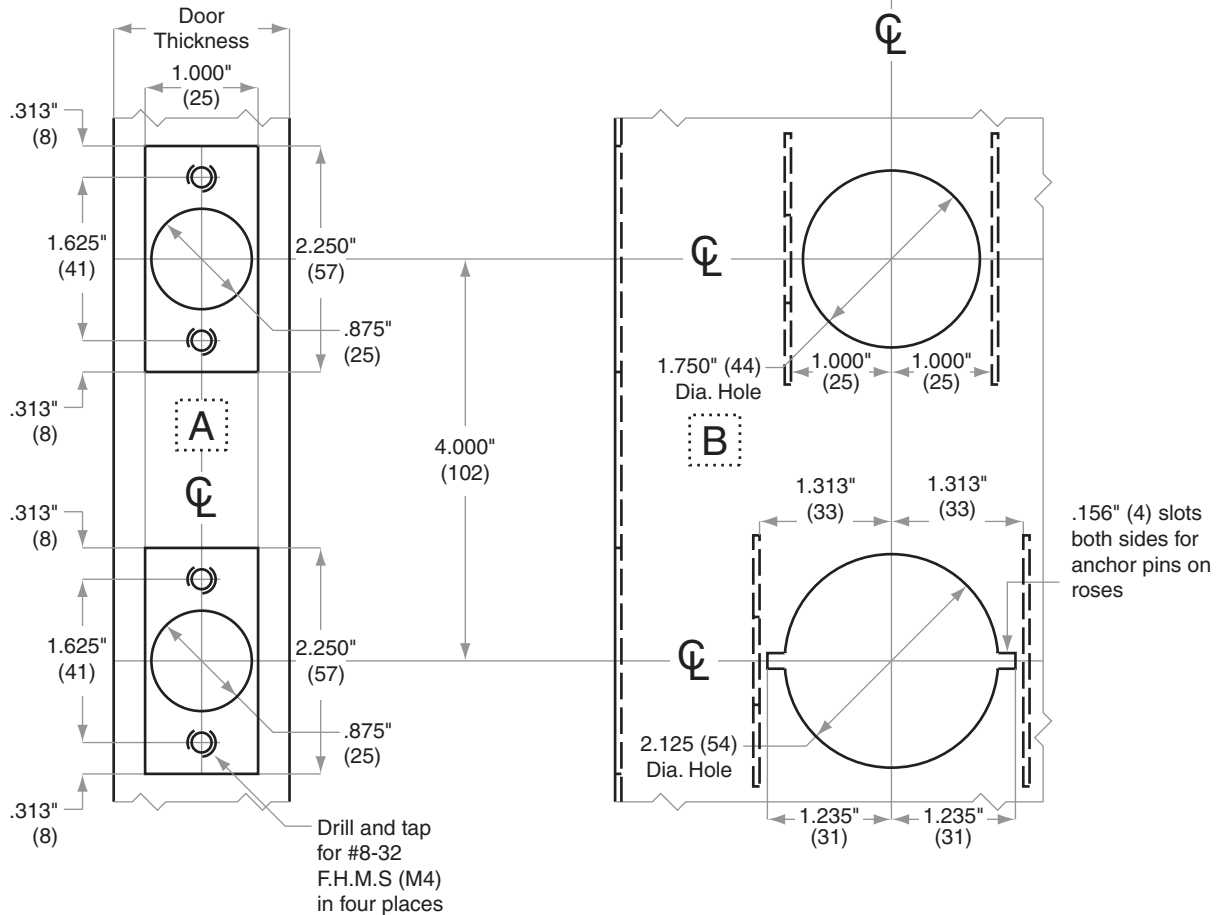
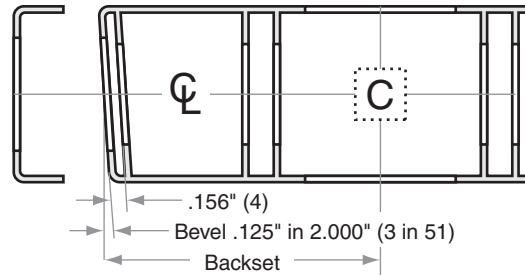


H-Series H101-H511

Door Type: Metal, Flat or Beveled
Door Thickness: 1½" (35mm) – 2" (51mm)
Faceplate: Square Corner, 1" (25mm) wide
Backsets: FH103-C, 2¾" (60mm) | FH103-D, 2¾" (70mm)



For metal door installations, suitable reinforcement is required to support latch in center of door to prevent lateral movement



Dimensions shown in parentheses () are in millimeters.

Door preparation template

FH103