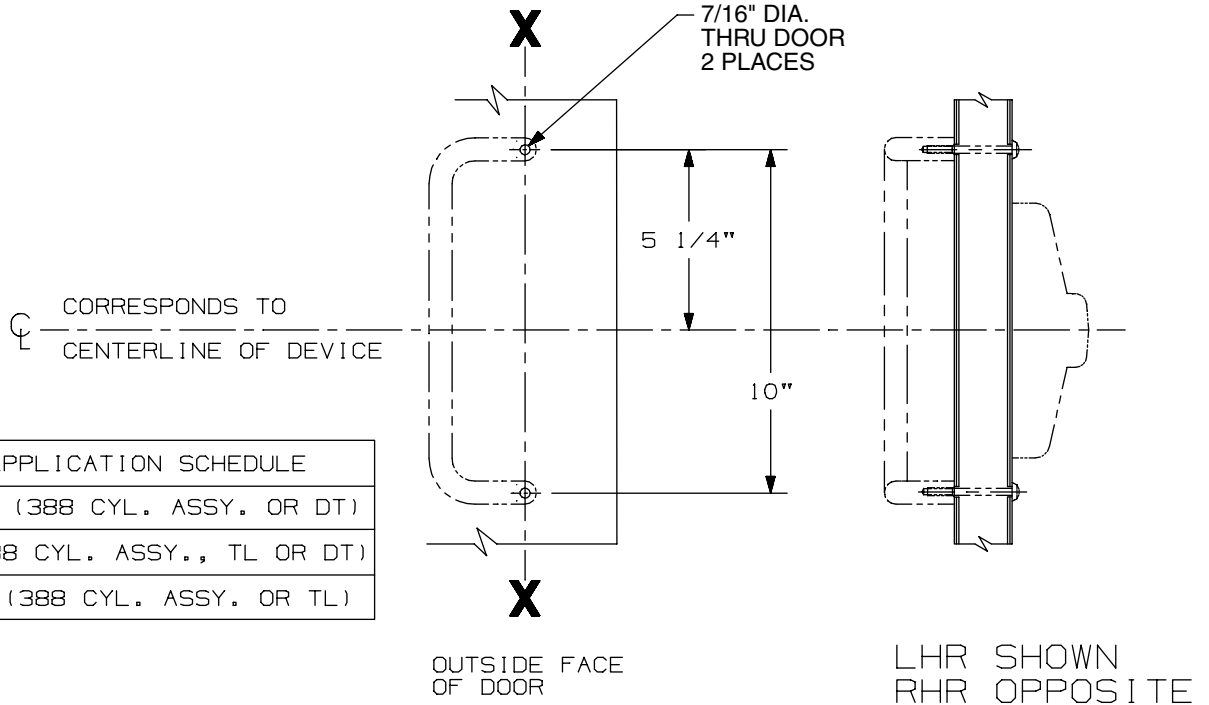


# IVES 8190HD-0 PULL

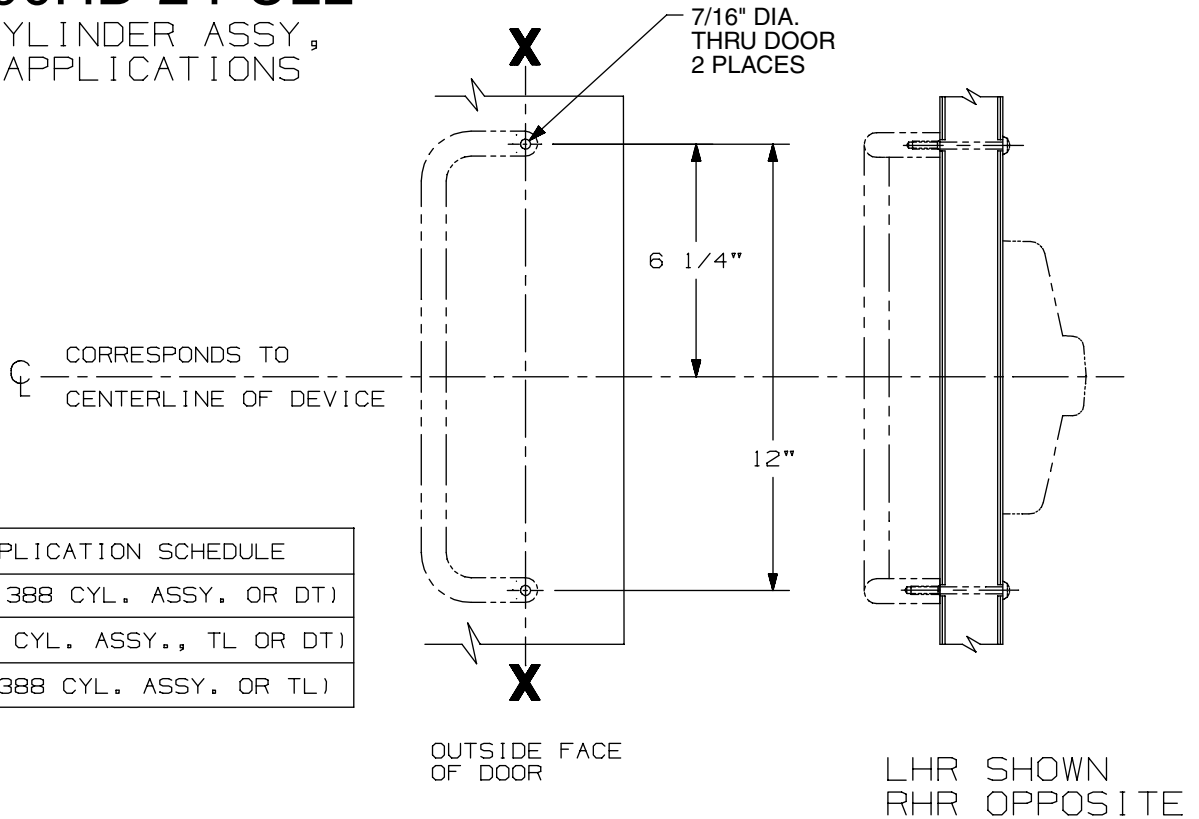
FOR 388 CYLINDER ASSY,  
TL OR DT APPLICATIONS



DEVICE APPLICATION SCHEDULE
33A/35A RIM (388 CYL. ASSY. OR DT)
33/3527A (388 CYL. ASSY., TL OR DT)
33/3527A-F (388 CYL. ASSY. OR TL)

# IVES 8190HD-2 PULL

FOR 388 CYLINDER ASSY,  
TL OR DT APPLICATIONS



DEVICE APPLICATION SCHEDULE
33A/35A RIM (388 CYL. ASSY. OR DT)
33/3527A (388 CYL. ASSY., TL OR DT)
33/3527A-F (388 CYL. ASSY. OR TL)

Ives 8190HD-0 & 8190HD-2 Pull

**VON DUPRIN®**

NOTES: SEE MASTER SHEET #10001 FOR SUGGESTED REINFORCING

TEMPLATE NUMBER:

20455\_b

DATE:  
06-05-15