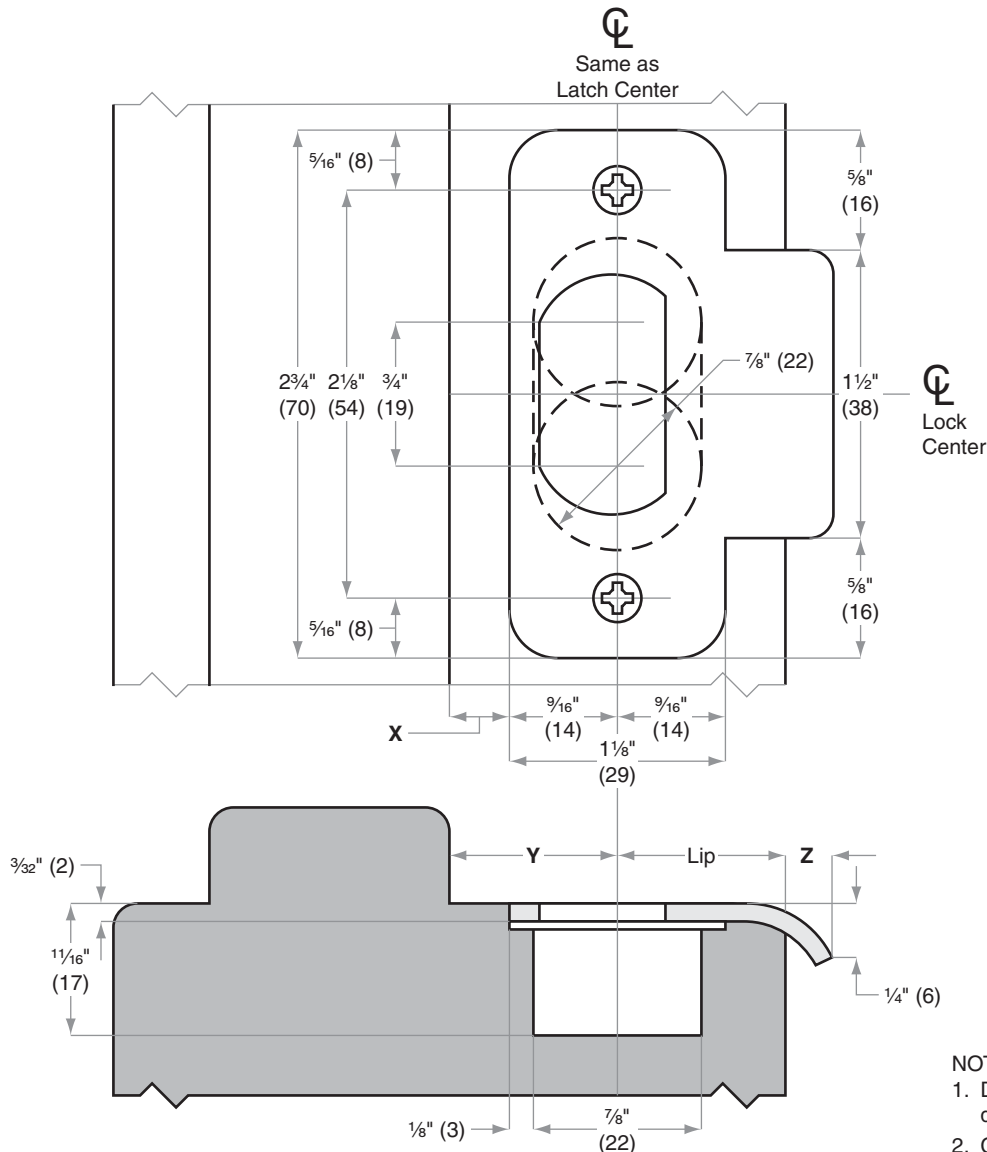




# Strikes

## Model 10-004

Jamb Type: Wood  
 Style: T-Strike, Round Corner, 1/4" (6 mm) Radius  
 Standard for:  
 Optional for: A-Series | B250-Series



- NOTES:
1. Dimensions X, Y and Z are variables dependent on the door thickness used
  2. Curved strike extension beyond jamb at Z must not be less than 3/16" (5) to ensure proper functioning of latch bolt
  3. 1 1/8" (29) Lip length for 1 3/8" (35) to 1 3/4" (44) doors. Other lengths available
  4. Strike location on frames must be adjusted for thickness of door silencers when used

Dimensions shown in parentheses ( ) are in millimeters.

Door preparation template