

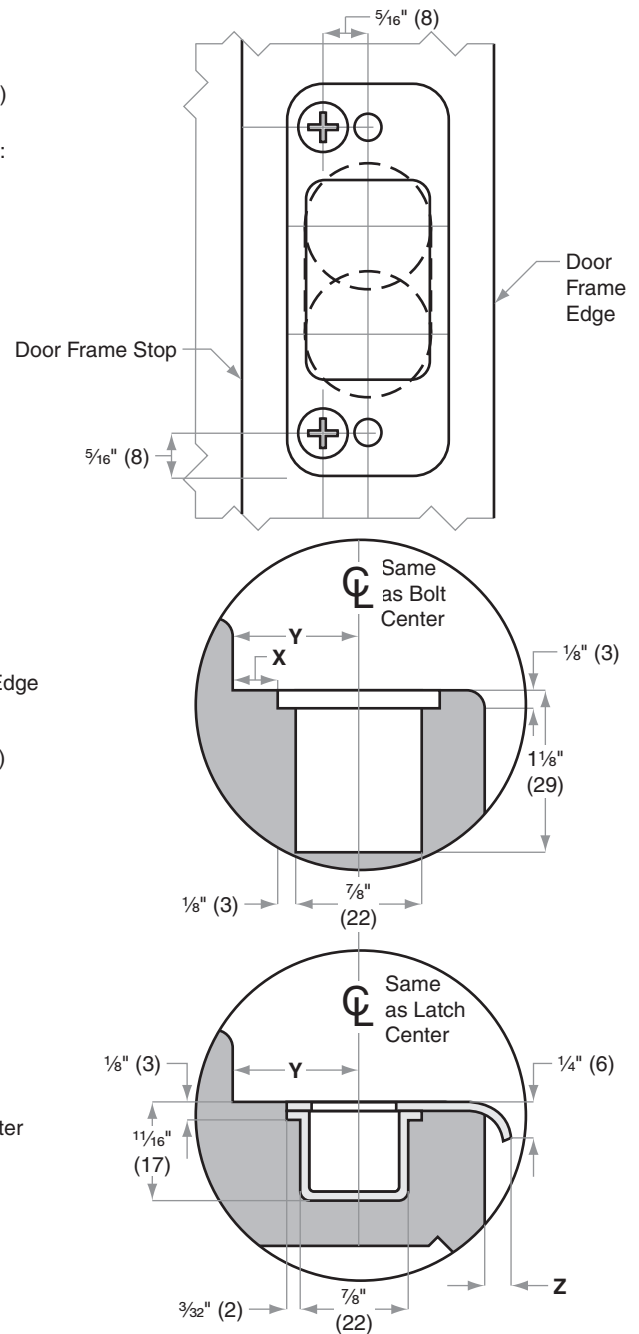
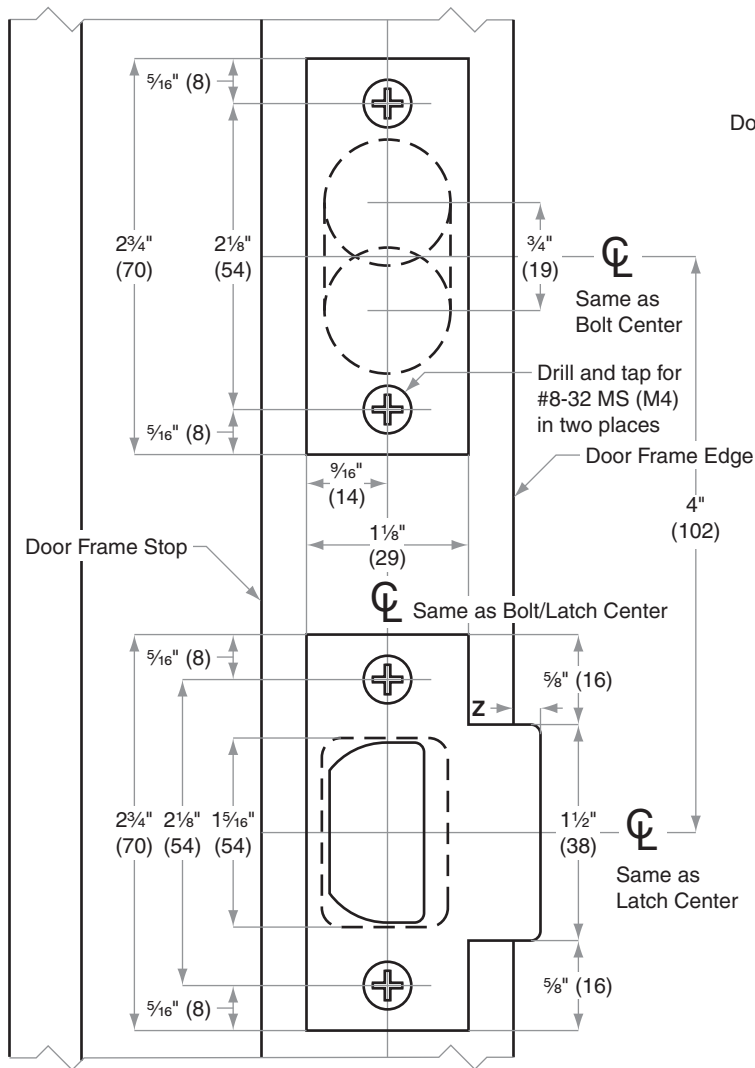
Strikes, Combination

Model 10-250=10-055x10-011

Jamb Type: Wood
 Style: Combination
 Standard for: H-Series | S200-Series
 Optional for:

NOTE:

1. Dimensions X, Y and Z are variables dependent on door thickness
2. Curved strike extension beyond jamb at Z must not be less than 3/16" (5) to ensure proper functioning of latch bolt
3. When strike/frame reinforcer is used, additional preparation is required: 2 Pilot Holes and 1/8" (3) deeper mortise



Dimensions shown in parentheses () are in millimeters.

Door preparation template