

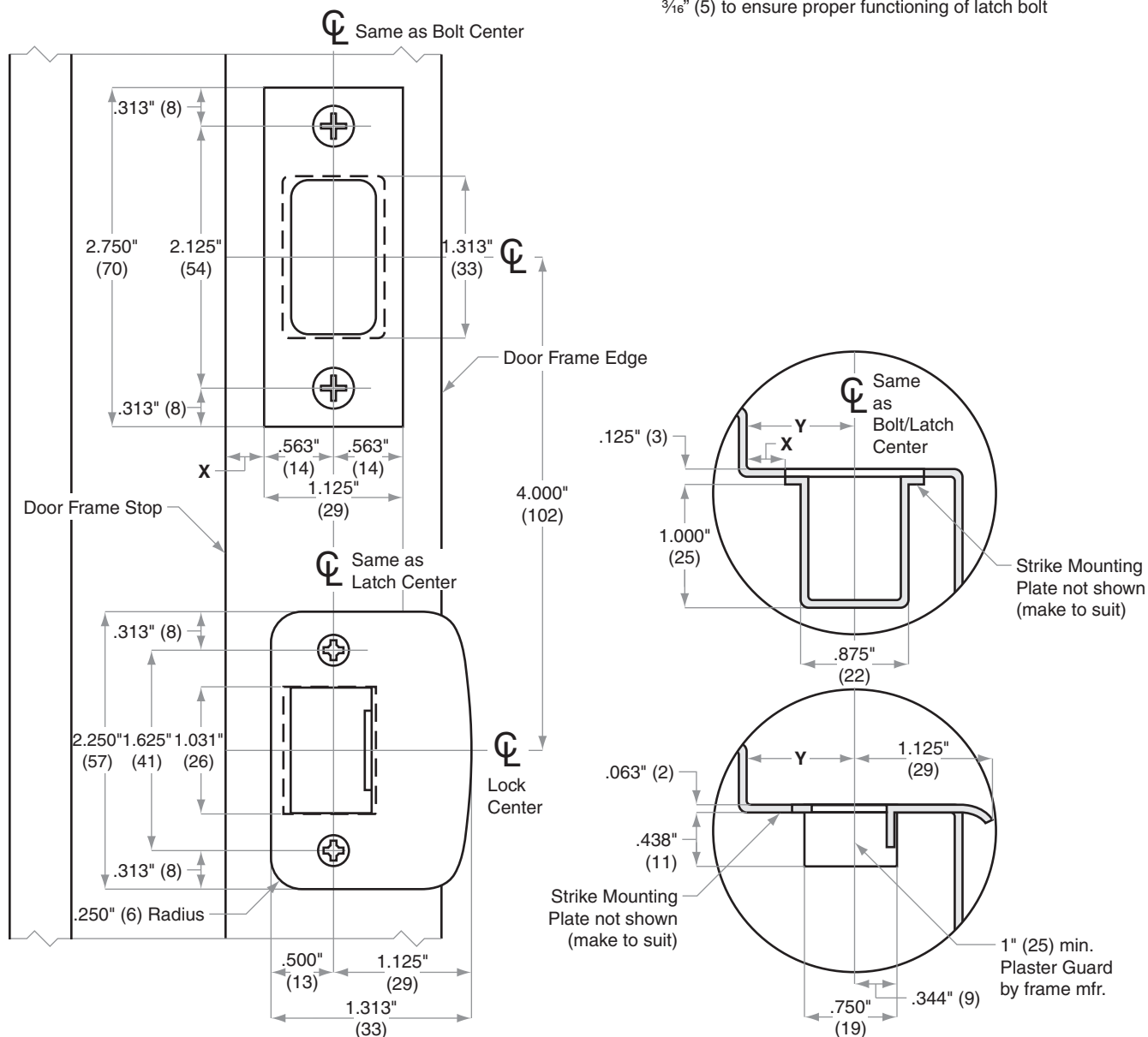


# Strikes, Combination

Model 10-255=10-055x10-027

Jamb Type: Metal  
 Style: Combination  
 Standard for:  
 Optional for: H-Series | S200-Series

- NOTE:
1. Dimensions X and Y are variables dependent on door thickness
  2. Distance from upper strike to lower strike same as latch and bolt
  3. Curved strike extension beyond jamb at Z must not be less than 3/16" (5) to ensure proper functioning of latch bolt



Dimensions shown in parentheses ( ) are in millimeters.

Door preparation template