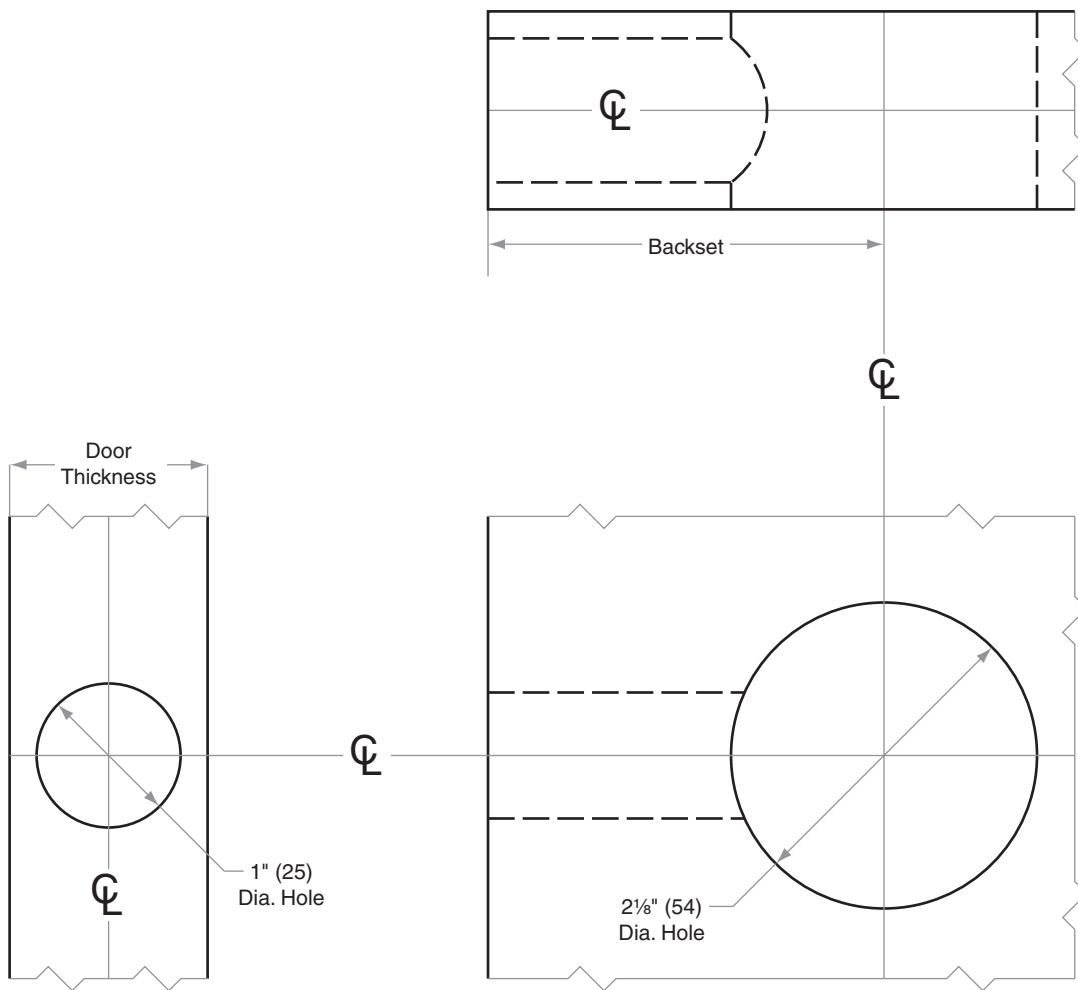




A-Series

Models A10–A85

Door Type: Wood or Composite, Flat
Door Thickness: 1 $\frac{1}{8}$ " (35 mm)–1 $\frac{3}{8}$ " (48 mm)
Faceplate: Circular Drive-In
Backsets: 2 $\frac{3}{8}$ " (60 mm) | 2 $\frac{1}{4}$ " (70 mm)



Dimensions shown in parentheses () are in millimeters.

Door preparation template