

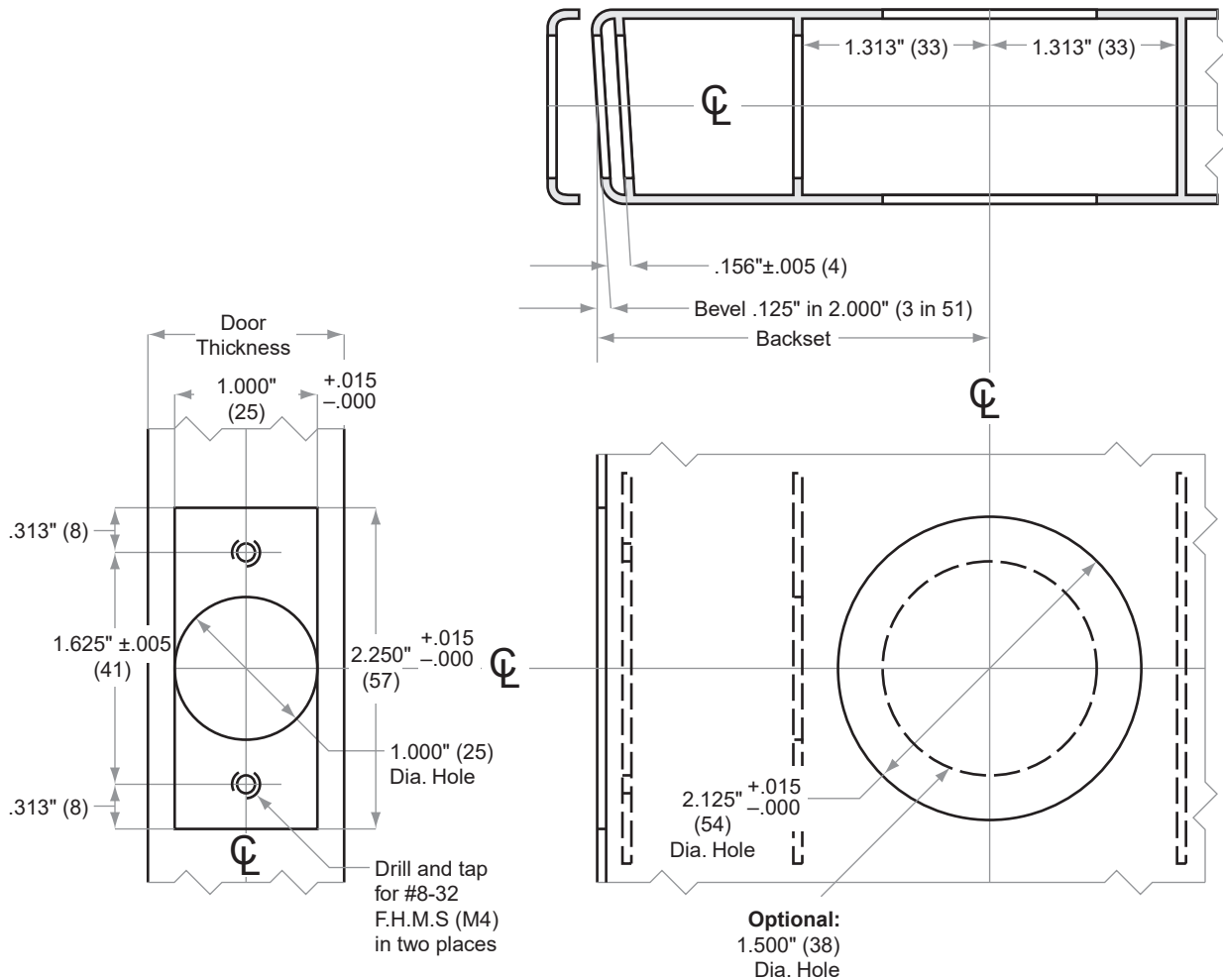


# B500-Series

Models B560, B561, B562, B563

- Door Type: Metal, Flat or Beveled
- Door Thickness: 1 $\frac{1}{8}$ " (35 mm)–1 $\frac{3}{8}$ " (48 mm)
- Faceplate: Square Corner, 1" (25 mm) wide
- Backsets: 2 $\frac{3}{8}$ " (60 mm), 2 $\frac{3}{4}$ " (70 mm), 5" (127 mm)

For metal door installations, suitable reinforcement is required to support latch in center of door and to prevent lateral movement



Dimensions shown in parentheses ( ) are in millimeters.

Door preparation template