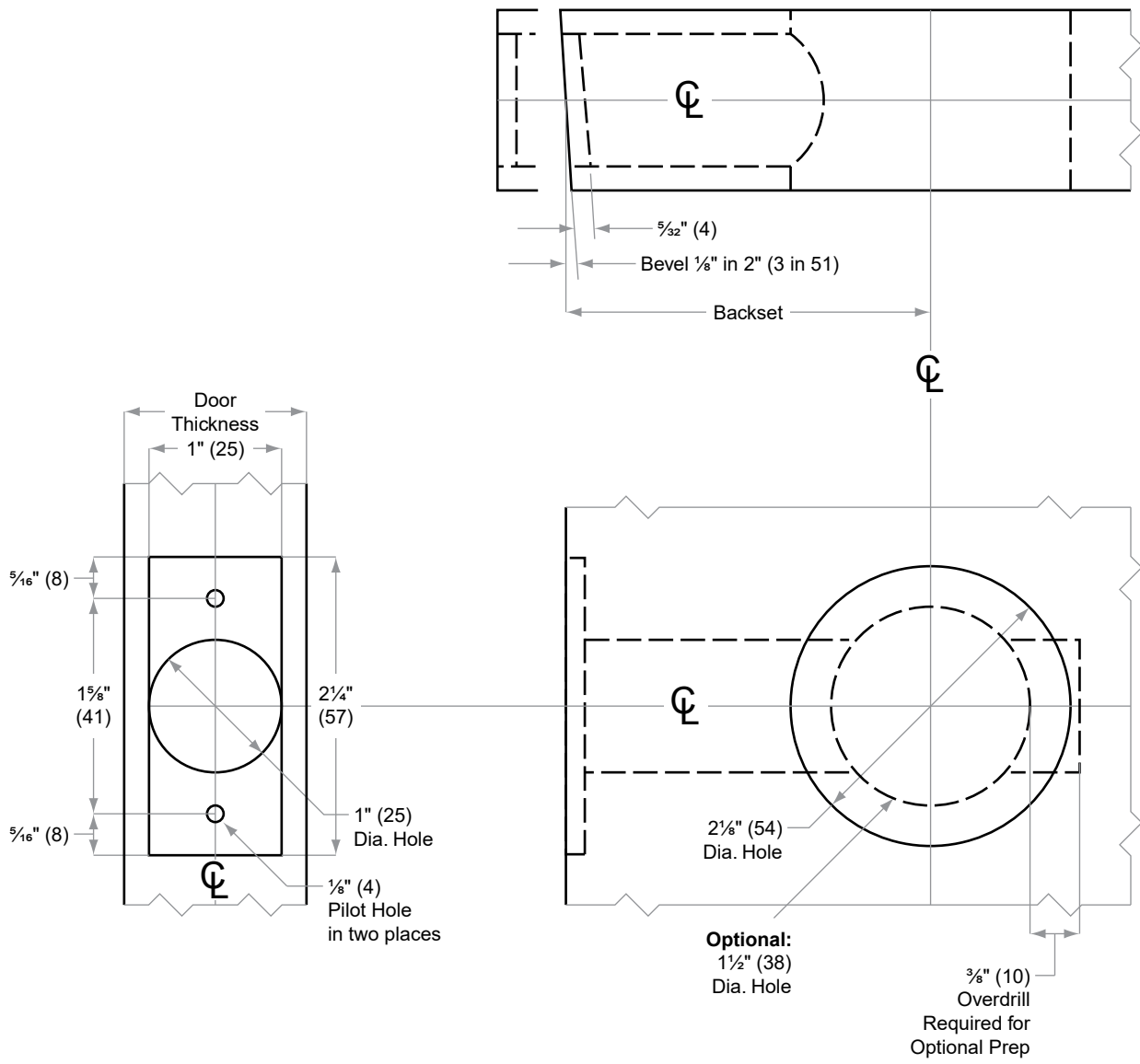




B500-Series, B60-Series

Models B560, B561, B562, B563, B60, B62

Door Type: Wood or Composite, Flat or Beveled
Door Thickness: 1 $\frac{1}{8}$ " (35 mm)–1 $\frac{7}{8}$ " (48 mm)
Faceplate: Square Corner, 1" (25 mm) wide
Backsets: 2 $\frac{3}{8}$ " (60 mm), 2 $\frac{3}{4}$ " (70 mm), 5" (127 mm)



2 1/8" bore required with indicator trim

Dimensions shown in parentheses () are in millimeters.

Door preparation template