

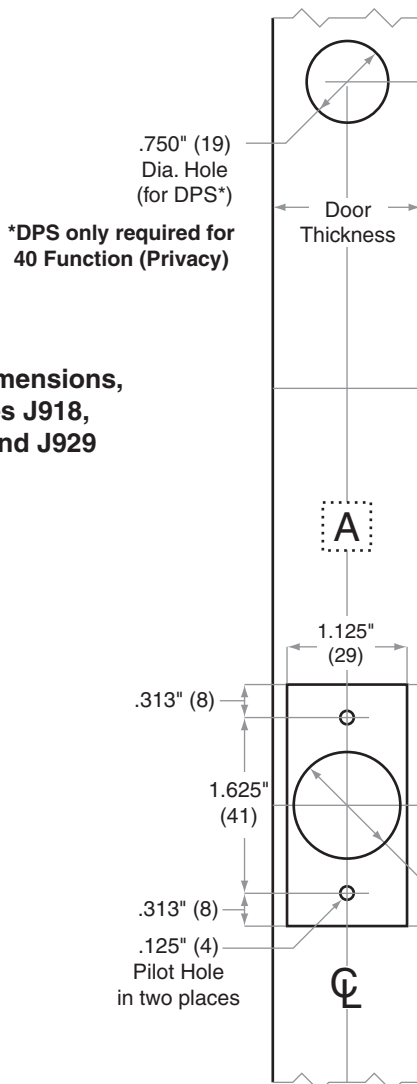
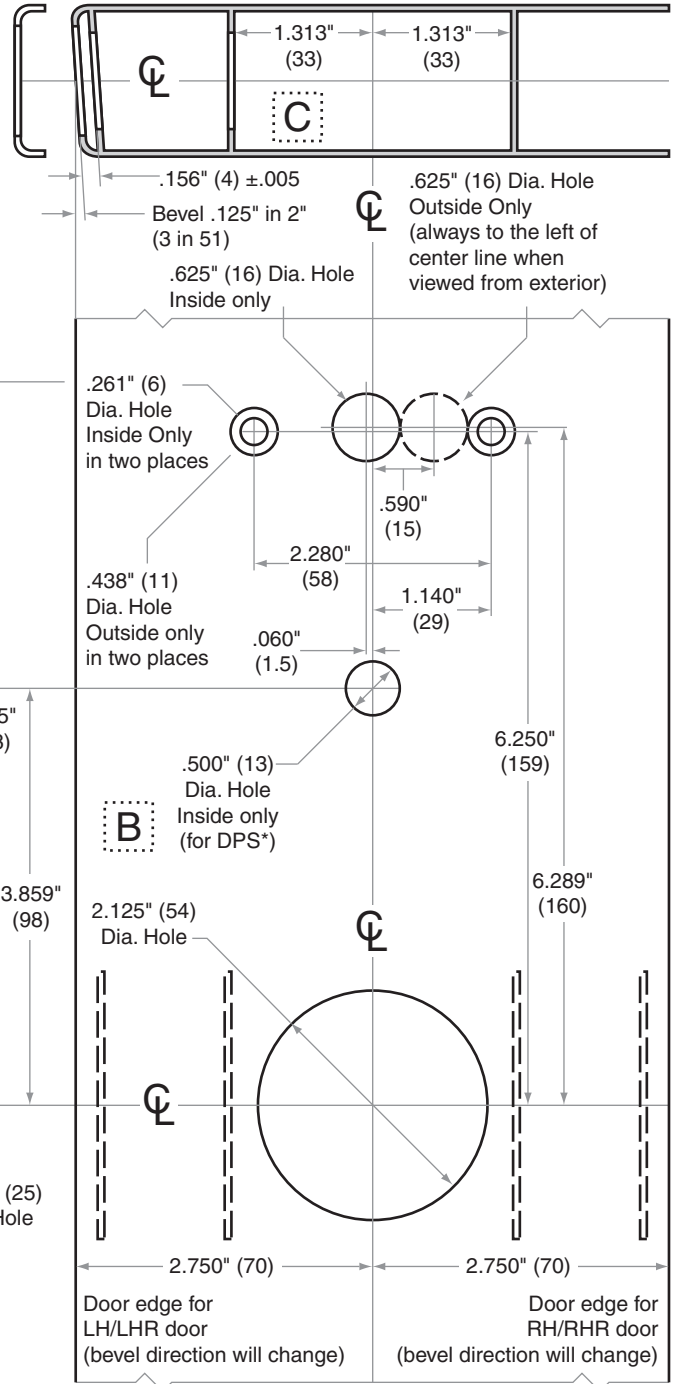


CO-Series

Models CO-200/250-CY

- Door Type: Metal, Flat or Beveled Conforms to ANSI/BHMA A156.115
- Door Thickness: 1 3/8" (35 mm) – 2 3/4" (70 mm)
- Faceplate: Square Corner, 1 1/8" (29 mm) wide
- Backsets: 2 3/4" (70 mm), 2 3/8" (60 mm), 3 3/4" (95 mm), 5 3/4" (146 mm)

IMPORTANT - It is critical to identify the interior and exterior sides of door in order to correctly locate the .625" holes



For Strike dimensions, see Templates J918, J919, J928, and J929

Dimensions shown in parentheses () are in millimeters.

Door preparation template

CO202